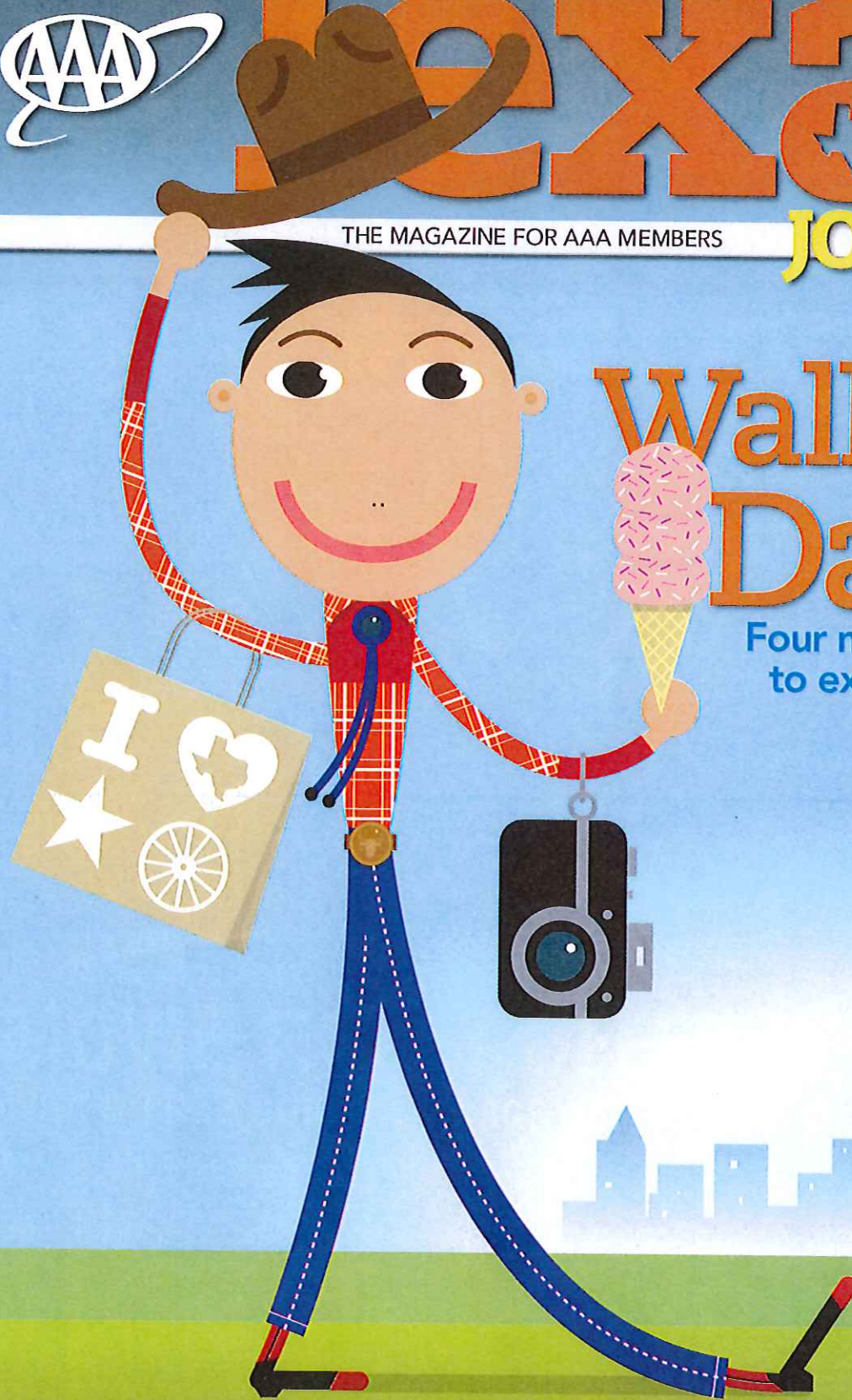




Texas

THE MAGAZINE FOR AAA MEMBERS

JOURNEY



Walkable Dallas

Four neighborhoods
to explore on foot

Cool escapes
in New Braunfels

Hooked on
Alaska fishing

AAA Texas
Annual Review

MAY/JUNE 2013

Uptown

DART stop: Cityplace/Uptown Station • Also use the M-Line Trolley

Young professionals flock to glossy Uptown, an easily walkable neighborhood packed with ample upscale dining, shopping, and nightlife options. The free M-Line Trolleys (mata.org) that run along McKinney Avenue offer an enjoyable way to get around. From end to end, the ride is about 25 minutes, and frequent stops make it easy to hop off when something catches your eye. That could include **The Quarter Bar**, a New Orleans-themed joint

with a rambling layout and seemingly unending supply of rooms. The trendy duo-concept restaurant **Private Social** offers an intimate dining room on one side, and another more casual section where diners gather with friends and nosh on shared-plate dishes. uptowndallas.net.

The trendy duo-concept restaurant **Private Social** offers an intimate dining room on one side, and another more casual section where diners gather with friends and nosh on shared-plate dishes. uptowndallas.net.

Private Social
3232 McKinney Avenue
(214) 754-4744
privatesocial.com



The Quarter Bar
(at Bread Winners Café)
3301 McKinney Avenue
(214) 754-4940
breadwinnerscafe.com



The Dallas World Aquarium
1801 N. Griffin Street
(214) 720-2224; dwazoo.com



Perot Museum of Nature and Science
2201 N. Field Street
(214) 428-5555; perotmuseum.org



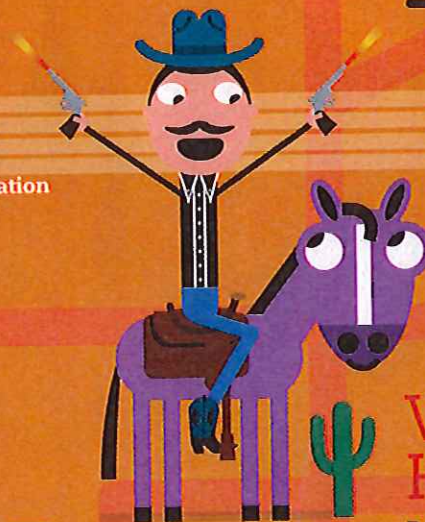
The Sixth Floor Museum at Dealey Plaza
411 Elm Street
(214) 747-6660; jfk.org



West End Station



Akard Station



Wild Bill's Western Store
311 N. Market Street
(214) 954-1050
wildbillswestern.com

West End Historic District

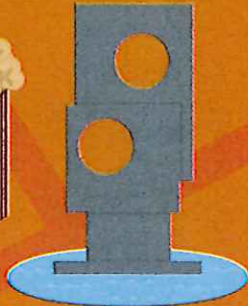
DART stop: West End Station



Old Red Museum
100 S. Houston Street
(214) 745-1100
oldred.org

The West End Historic District started as a trading post, though today it's best known as the neighborhood in which President Kennedy was assassinated as his motorcade rounded the bend at Dealey Plaza. The **Sixth Floor Museum**, located in the building from which the shots were fired, is presently offering a yearlong Living History Series with monthly presentations from those who witnessed history unfold in the early 1960s. The rest of this 20-block district abounds with brick buildings, sidewalk patios, and plenty of history—including the castlelike **Old Red Museum**, which details Dallas County's history from prehistoric times on. Historic sites give way to entertaining shops like **Wild Bill's Western Store**; owner Bill Dewbre supplied wardrobe items to costumers working on *Dallas*, a role he also filled during the television show's original run. dallaswestend.org.

The Magnolia
 3699 McKinney Avenue
 (214) 520-0394
 landmarktheatres.com



Nasher Sculpture Center
 2001 Flora Street
 (214) 242-5100
 nashersculpturecenter.org

Dallas Arts District

DART stop: St. Paul Station or Pearl/Arts District Station

You're in for a dose of culture in this 19-block area, where some 15 places offer performing or visual arts. Among the most-visited is the **Dallas Museum of Art**, which recently stopped charging admission to its main exhibits, a huge move for this world-class museum that houses art from many continents. The **Nasher Sculpture Center** offers another feast for the eyes—inside and out. In summer, concerts and other activities take place on select evenings in the garden. Walking tours of the entire arts district, held on the first and third Saturdays of each month, teach about architecture. Register online; \$5-\$10. (214) 744-6642; thedallasartsdistrict.org.

Crow Collection of Asian Art
 2010 Flora Street
 (214) 979-6430
 crowcollection.com

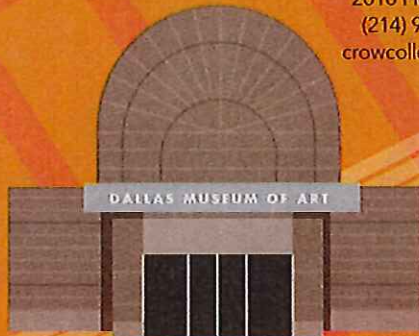


**Pearl/
 Arts District
 Station**

Meyerson Symphony Center
 2301 Flora Street
 (214) 670-3600
 meyersonsymphonycenter.com



**Deep Ellum
 Station**



Dallas Museum of Art
 1717 N. Harwood Street
 (214) 922-1200;
 dallasmuseumofart.org



**St. Paul
 Station**

The Belo Mansion
 2101 Ross Avenue
 (214) 220-0239
 belomansion.com



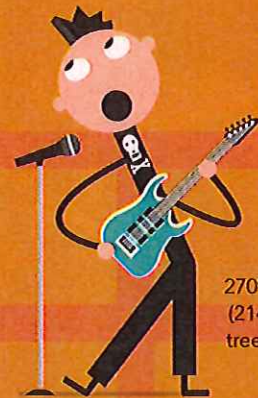
**Baylor
 Station**

Adair's Saloon
 2624 Commerce Street
 (214) 939-9900
 adairssaloon.com

Deep Ellum Brewing Co.
 2823 St. Louis Street
 (214) 888-3322
 deepellumbrewing.com



Twisted Root Burger Co.
 2615 Commerce Street
 (214) 741-7668
 twistedrootburgerco.com



Trees
 2709 Elm Street
 (214) 741-1122
 treesdallas.com



Deep Ellum

DART stop: Baylor Station or Deep Ellum Station

The popularity of rough-around-the-edges Deep Ellum has waxed and waned over the years, but a recent resurgence is helping to raise Deep Ellum back to its status as a music mecca. While shops and art galleries offer daytime entertainment, the night belongs to the area's 20-plus nightclubs and music venues. **Adair's Saloon** has live music seven nights a week and a well-loved jukebox when the bands aren't there. For a wide range of acts and an impressive sound system, check out **Trees**. On Saturday afternoons and Thursday evenings, **Deep Ellum Brewing Co.**, the city's first microbrewery, opens to the public; 10 bucks gets you three drink tickets, a logo glass, live music, and a short talk on making beer. deepellumtexas.com.

Download DART and M-Line Trolley maps at dart.org. Free maps of the Dallas area are available at your local AAA Texas branch.