

# COSTA TABLES



STATE OF SOUTH CAROLINA

2 0 2 4



**Mailing Address:**

**HBF**  
PO Box 8  
Hickory NC 28603-0008

**Shipping Address:**

**HBF**  
900 - 12th Street Drive NW  
Hickory NC 28601-4763

**Contact:**

Phone: 1.855.HBF.2020  
828.328.2064  
Fax: 828.485.2690  
Info: hbfservice@hbf.com  
www.hbf.com

**Order Processing:**

Phone: 1.855.HBF.2020  
828.328.2064  
Fax: 828.485.2690  
hbforders@hbf.com

	PAGE
Reference .....	2-26
Overview.....	2
Scope of Line .....	3
Materials & Finishes .....	4-16
How to Specify .....	17
Grain Direction on Veneer Tops .....	19
Base & Nesting Dimensions .....	20
Grommet Locations & Wire Management .....	21
Electrical System .....	22
Technical Specifications .....	24
GSA Federal Contract Information.....	24
Typicals.....	26-30
Pricing .....	31-37
Rectangular Tables.....	32
Radiused Corner Tables.....	34
Electrical .....	36
Replacement Accessories .....	37
Weights + Cubes.....	38



PLEASE SPECIFY THE FOLLOWING TO ORDER:

MODEL NUMBER Indicate type as part of model #	FSC* CERTIFICATION	FINISH	BASE STYLE	FOOT	MODESTY	GROMMET

OPTION OVERVIEW

FSC\* CERTIFICATION

- X = No FSC\*
- F = FSC\* Certified (upcharges apply)

FSC\* PRODUCT

HBF holds Forest Stewardship Council® (FSC®) Chain-of-Custody Certification® (SCS-COC-002143). This certification agreement allows HBF to offer FSC® certified veneer or core on a project specific basis.

An upcharge of 5% list per unit for conference products, will apply to all FSC® specified units.

FINISH

See References: Materials & Finishes

BASE STYLE

- FPA = Flip Top, Polished Aluminum Base
- FBL = Flip Top, Black Powder Coat Base
- FWI = Flip Top, White Powder Coat Base
- FLG = Flip Top, Grey Powder Coat Base
- FXPA = Fixed Top, Polished Aluminum Base
- FXBL = Fixed Top, Black Powder Coat Base
- FXWI = Fixed Top, White Powder Coat Base
- FXLG = Fixed Top, Grey Powder Coat Base

FOOT

- C = Casters *Note: Base Finish selection dictates caster selection*
- G = Glides

MODESTY

*Note: Modesty Panel material and finish matches top material and finish*

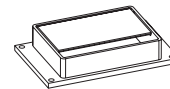
- MN Modesty Panel - No
- MY Modesty Panel - Yes (upcharges apply)

GROMMET

*Note: Upcharges apply*

- 72" Cord - "Soft Cord": Standard 3/8" rubber coated power cord with three prong plug.
- 72" Whip - "Hardwired": Flexible metal conduit housing the wires, which are exposed without a plug, to be professionally installed into the buildings power system. *Please check with the local authorities for compliance with the electrical requirements in your market, and always use a certified electrician for the installation.*

- GN = Grommet No
- AGC1 = Costa Alum Hinged Grommet - Standard flip top pass through grommet.
- ABC1 = Costa Corded Dean-Z-72" cord, Black - Dean-Z Black module with soft cord that offers 2 power receptacles & 1 Dual USB outlet
- AWC1 = Costa Corded Dean-Z-72" cord, White - Dean-Z White module with soft cord that offers 2 power receptacles & 1 Dual USB outlet
- ABH1 = Costa Hardwired Dean-Z-72" whip, Black - Dean-Z Black module with hardwire that offers 2 power receptacles & 1 Dual USB outlet
- AWH1 = Costa Hardwired Dean-Z-72" whip, White - Dean-Z White module with hardwire that offers 2 power receptacles & 1 Dual USB outlet
- ABC2 = Costa Corded Axil-Z-72" cord, Black - Axil-Z Black module with Soft Cord that offers 2 power receptacles, 1 Dual USB outlet, & 1 Open Data Port
- AWC2 = Costa Corded Axil-Z-72" cord, White - Axil-Z White module with Soft Cord that offers 2 power receptacles, 1 Dual USB outlet, & 1 Open Data Port
- ABH2 = Costa Hardwired Axil-Z-72" whip, Black - Axil-Z Black module with Hardwire that offers 2 power receptacles, 1 Dual USB outlet, & 1 Open Data Port
- AWH2 = Costa Hardwired Axil-Z-72" whip, White - Axil-Z White module with Hardwire that offers 2 power receptacles, 1 Dual USB outlet, & 1 Open Data Port
- ABL3 = Costa Corded MHO-72" cord, Black - MHO Black retractable module with Soft Cord that offers 2 power receptacles, & 2 Open Data Ports
- ASV3 = Costa Corded MHO-72" cord, Silver - MHO Silver retractable module with Soft Cord that offers 2 power receptacles, & 2 Open Data Ports



Aluminum Hinged Grommet - AGCI



Power/Data - AXIL-Z



Power/Data - DEAN-Z



Power/Data - ABL3

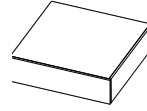


Power/Data - ASV3

EDGES

VENEER TOP WITH SOLID EDGE

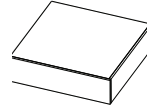
The edges of Costa tables specifying veneer surfaces come with a wood edgeband, for a coordinating wood finish edge.



1 1/16" Thick

LAMINATE TOP WITH SOFT EDGE

The edges of Costa tables specifying laminate surfaces come pre-color matched with a PVC edgeband for a durable edge that holds up through day-to-day usage.



1 1/16" Thick

TOPS

Rectangular

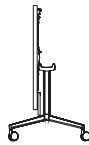


Radiused Corner



BASES

Flip Top



Fixed Top



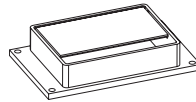
MODESTY PANEL

Optional with upcharges



GROMMET / POWER DATA

Grommet



Power / Data Center



ELECTRICAL

Modular Power





veneer

PLAIN SLICED ASH

Smoke Opaque	AH310
Clear	AH400
Black Opaque	AH402
Grey Opaque	AH403
Warm White Opaque	AH404
Mist Opaque	AH405
Denim Opaque	AH406
Pewter Opaque	AH407
Peppercorn Opaque	AH408
Amber	AH901
Designer White Opaque	AH902
Warm Brick	AH911
Nutmeg	AH929
Bark	AH937
Dark Roast	AH984
Sumatra	AH993

PLAIN SLICED WALNUT

Smoke Opaque	NT310
Clear	NT400
Black Opaque	NT402
Grey Opaque	NT403
Warm White Opaque	NT404
Mist Opaque	NT405
Denim Opaque	NT406
Pewter Opaque	NT407
Peppercorn Opaque	NT408
Designer White Opaque	NT902
Warm Brick	NT911
Nutmeg	NT929
Bark	NT937
Dark Roast	NT984
Sumatra	NT993

PLAIN SLICED MAPLE

Nutmeg	NE929
Dark Roast	NE984
Sumatra	NE993
Medium Brown Cherry	NE215
Amber	NE301
Nutmeg Walnut	NE629
Charcoal Grey Walnut	NE637
Dark Roast Walnut	NE684
Sumatra Walnut	NE693

PLAIN SLICED CHERRY

Medium Brown Cherry	NC215
---------------------	-------

veneer

PLAIN SLICED OAK

Smoke Opaque	RK310
Clear	RK400
Black Opaque	RK402
Grey Opaque	RK403
Warm White Opaque	RK404
Mist Opaque	RK405
Denim Opaque	RK406
Pewter Opaque	RK407
Peppercorn Opaque	RK408
Amber	RK901
Designer White Opaque	RK902
Warm Brick	RK911
Nutmeg	RK929
Bark	RK937
Dark Roast	RK984
Sumatra	RK993
Amber	RK301
Nutmeg Walnut	RK629
Charcoal Grey Walnut	RK637
Dark Roast Walnut	RK684
Sumatra Walnut	RK693

RIFT CUT OAK

Smoke Opaque	RF310
Clear	RF400
Black Opaque	RF402
Grey Opaque	RF403
Warm White Opaque	RF404
Mist Opaque	RF405
Denim Opaque	RF406
Pewter Opaque	RF407
Peppercorn Opaque	RF408
Amber	RF901
Designer White Opaque	RF902
Warm Brick	RF911
Nutmeg	RF929
Bark	RF937
Dark Roast	RF984
Sumatra	RF993
Amber	RF301
Nutmeg Walnut	RF629
Charcoal Grey Walnut	RF637
Dark Roast Walnut	RF684
Sumatra Walnut	RF693

QUARTER SLICED ASH

Smoke Opaque	QAH310
Clear	QAH400
Black Opaque	QAH402
Grey Opaque	QAH403
Warm White Opaque	QAH404
Mist Opaque	QAH405
Denim Opaque	QAH406
Pewter Opaque	QAH407
Peppercorn Opaque	QAH408
Amber	QAH901
Designer White Opaque	QAH902
Warm Brick	QAH911
Nutmeg	QAH929
Bark	QAH937
Dark Roast	QAH984
Sumatra	QAH993



veneer

QUARTER SLICED WALNUT

Smoke Opaque	QNT310
Clear	QNT400
Black Opaque	QNT402
Grey Opaque	QNT403
Warm White Opaque	QNT404
Mist Opaque	QNT405
Denim Opaque	QNT406
Pewter Opaque	QNT407
Peppercorn Opaque	QNT408
Designer White Opaque	QNT902
Warm Brick	QNT911
Nutmeg	QNT929
Bark	QNT937
Dark Roast	QNT984
Sumatra	QNT993

QUARTER SLICED MAPLE

Nutmeg	QNE929
Dark Roast	QNE984
Sumatra	QNE993
Medium Brown Cherry	QNE215
Amber	QNE301
Nutmeg Walnut	QNE629
Charcoal Grey Walnut	QNE637
Dark Roast Walnut	QNE684
Sumatra Walnut	QNE693

QUARTER SLICED CHERRY

Medium Brown Cherry	QNC215
---------------------	--------

QUARTER SLICED OAK

Smoke Opaque	QRK310
Clear	QRK400
Black Opaque	QRK402
Grey Opaque	QRK403
Warm White Opaque	QRK404
Mist Opaque	QRK405
Denim Opaque	QRK406
Pewter Opaque	QRK407
Peppercorn Opaque	QRK408
Amber	QRK901
Designer White Opaque	QRK902
Warm Brick	QRK911
Nutmeg	QRK929
Bark	QRK937
Dark Roast	QRK984
Sumatra	QRK993
Amber	QRK301
Nutmeg Walnut	QRK629
Charcoal Grey Walnut	QRK637
Dark Roast Walnut	QRK684
Sumatra Walnut	QRK693

LAMINATES

WOODGRAIN

Beigewood	PLBW
Bourbon Cherry	PL701
Shaker Cherry	PL7935
Columbian Walnut	PL7943
Skyline Walnut	PL7964
Walnut Heights	PL7965
Looks Likatre	PLWP110

SOLID

Carnation White	PLSW806
Eggshell White	PLSW803
Designer White	PLWH

\* See Technical Specifications for laminate manufacturer cross reference.

CUSTOM FINISHES

An upcharge of 10% Net per unit for conference products, with a minimum upcharge of \$500 Net per order, will apply for any custom wood veneer finish.

PLAIN SLICED ASH: (AH) - (2 SHEEN UNLESS OTHERWISE INDICATED)



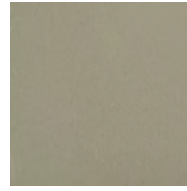
AH310  
Smoke Opaque



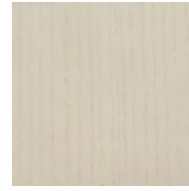
AH400  
Clear



AH402  
Black Opaque



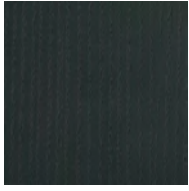
AH403  
Grey Opaque



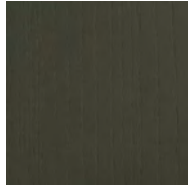
AH404  
Warm White Opaque



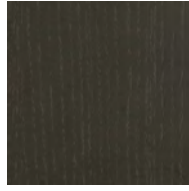
AH405  
Mist Opaque



AH406  
Denim Opaque



AH407  
Pewter Opaque



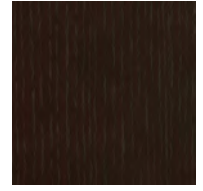
AH408  
Peppercorn Opaque



AH901  
Amber



AH902  
Designer White Opaque



AH911  
Warm Brick



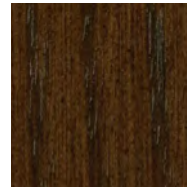
AH929  
Nutmeg



AH937  
Bark



AH984  
Dark Roast

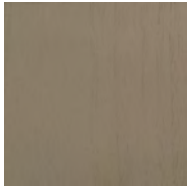


AH993  
Sumatra

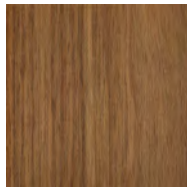
Screen images are intended as a guide only and should not be regarded as absolutely correct.  
For exact color/texture, please visit [www.hbf.com](http://www.hbf.com) to request an actual sample.



PLAIN SLICED WALNUT: (NT) - (2 SHEEN UNLESS OTHERWISE INDICATED)



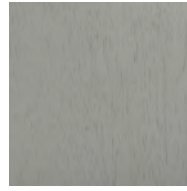
NT310  
Smoke Opaque



NT400  
Clear



NT402  
Black Opaque



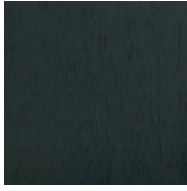
NT403  
Grey Opaque



NT404  
Warm White Opaque



NT405  
Mist Opaque



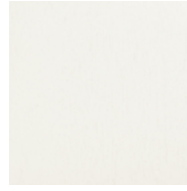
NT406  
Denim Opaque



NT407  
Pewter Opaque



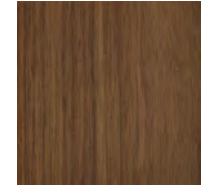
NT408  
Peppercorn Opaque



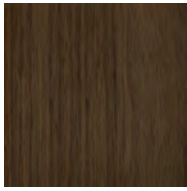
NT902  
Designer White Opaque



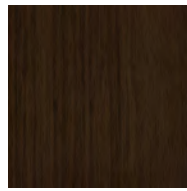
NT911  
Warm Brick



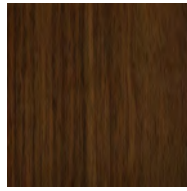
NT929  
Nutmeg



NT937  
Bark



NT984  
Dark Roast



NT993  
Sumatra

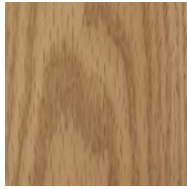
Screen images are intended as a guide only and should not be regarded as absolutely correct.  
For exact color/texture, please visit [www.hbf.com](http://www.hbf.com) to request an actual sample.



PLAIN SLICED OAK: (RK) - (2 SHEEN UNLESS OTHERWISE INDICATED)



RK310  
Smoke Opaque



RK400  
Clear



RK402  
Black Opaque



RK403  
Grey Opaque



RK404  
Warm White Opaque



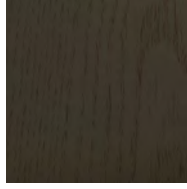
RK405  
Mist Opaque



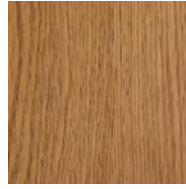
RK406  
Denim Opaque



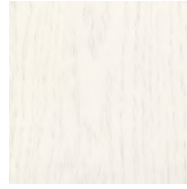
RK407  
Pewter Opaque



RK408  
Peppercorn Opaque



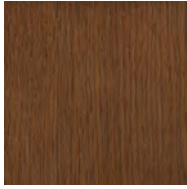
RK901  
Amber



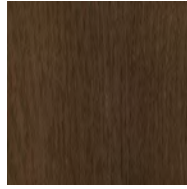
RK902  
Designer White Opaque



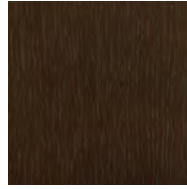
RK911  
Warm Brick



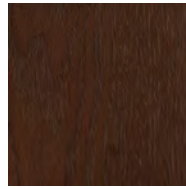
RK929  
Nutmeg



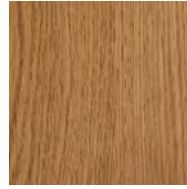
RK937  
Bark



RK984  
Dark Roast



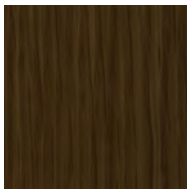
RK993  
Sumatra



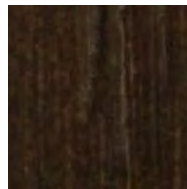
RK301  
Amber  
30 Sheen



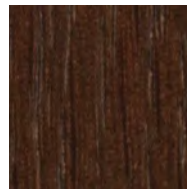
RK629  
Nutmeg Walnut  
30 Sheen



RK637  
Charcoal Grey Walnut  
30 Sheen



RK684  
Dark Roast Walnut  
30 Sheen



RK693  
Sumatra Walnut  
30 Sheen

Screen images are intended as a guide only and should not be regarded as absolutely correct. For exact color/texture, please visit [www.hbf.com](http://www.hbf.com) to request an actual sample.



PLAIN SLICED MAPLE: (NE) - (30 SHEEN UNLESS OTHERWISE INDICATED)



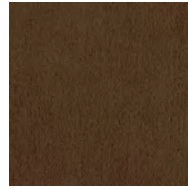
NE215  
Medium Brown Cherry



NE301  
Amber



NE629  
Nutmeg Walnut



NE637  
Charcoal Grey



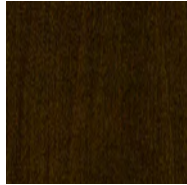
NE684  
Dark Roast Walnut



NE693  
Sumatra Walnut



NE929  
Nutmeg  
2 Sheen

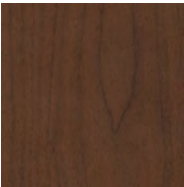


NE984  
Dark Roast  
2 Sheen



NE993  
Sumatra  
2 Sheen

PLAIN SLICED CHERRY: (NC) - (30 SHEEN)



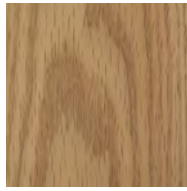
NC215  
Med. Brown Cherry

Screen images are intended as a guide only and should not be regarded as absolutely correct.  
For exact color/texture, please visit [www.hbf.com](http://www.hbf.com) to request an actual sample.

RIFT CUT OAK: (RF) - (2 SHEEN UNLESS OTHERWISE INDICATED)



RF310  
Smoke Opaque



RF400  
Clear



RF402  
Black Opaque



RF403  
Grey Opaque



RF404  
Warm White Opaque



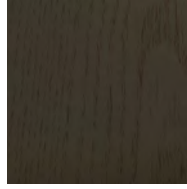
RF405  
Mist Opaque



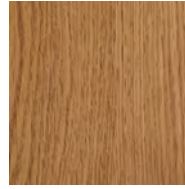
RF406  
Denim Opaque



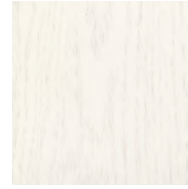
RF407  
Pewter Opaque



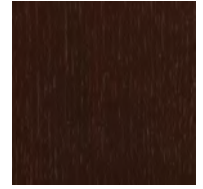
RF408  
Peppercorn Opaque



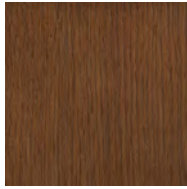
RF901  
Amber



RF902  
Designer White Opaque



RF911  
Warm Brick



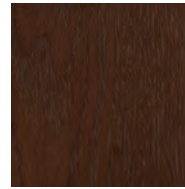
RF929  
Nutmeg



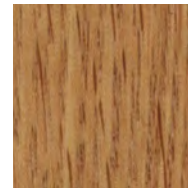
RF937  
Bark



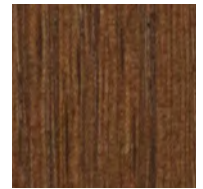
RF984  
Dark Roast



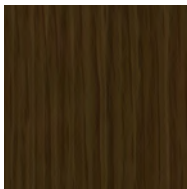
RF993  
Sumatra



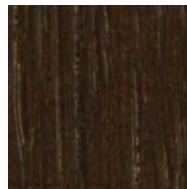
RF301  
Amber  
30 Sheen



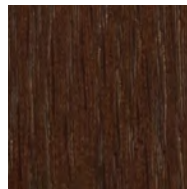
RF629  
Nutmeg Walnut  
30 Sheen



RF637  
Charcoal Grey Walnut  
30 Sheen



RF684  
Dark Roast Walnut  
30 Sheen



RF693  
Sumatra Walnut  
30 Sheen

Screen images are intended as a guide only and should not be regarded as absolutely correct. For exact color/texture, please visit [www.hbf.com](http://www.hbf.com) to request an actual sample.

QUARTER SLICED ASH: (QAH) - (2 SHEEN UNLESS OTHERWISE INDICATED)



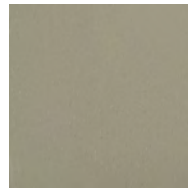
QAH310  
Smoke Opaque



QAH400  
Clear



QAH402  
Black Opaque



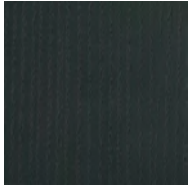
QAH403  
Grey Opaque



QAH404  
Warm White Opaque



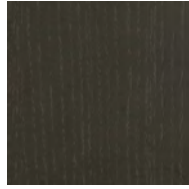
QAH405  
Mist Opaque



QAH406  
Denim Opaque



QAH407  
Pewter Opaque



QAH408  
Peppercorn Opaque



QAH901  
Amber



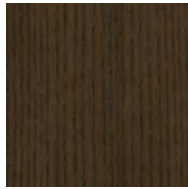
QAH902  
Designer White Opaque



QAH911  
Warm Brick



QAH929  
Nutmeg



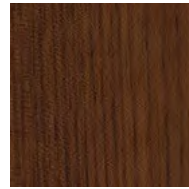
QAH937  
Bark



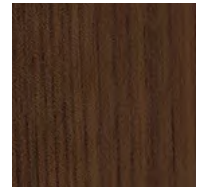
QAH984  
Dark Roast



QAH993  
Sumatra



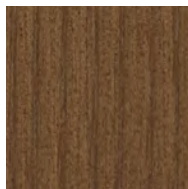
QAH215  
Medium Brown Cherry  
*30 Sheen*



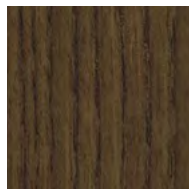
QAH293  
Chestnut Cherry  
*30 Sheen*



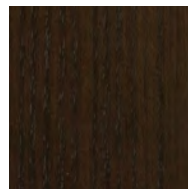
QAH301  
Amber  
*30 Sheen*



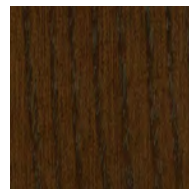
QAH629  
Nutmeg Walnut  
*30 Sheen*



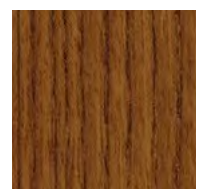
QAH637  
Charcoal Grey Walnut  
*30 Sheen*



QAH684  
Dark Roast Walnut  
*30 Sheen*



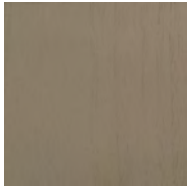
QAH693  
Sumatra Walnut  
*30 Sheen*



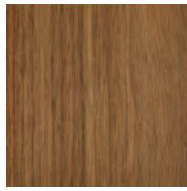
QAH701  
Light Cherry  
*30 Sheen*

Screen images are intended as a guide only and should not be regarded as absolutely correct.  
For exact color/texture, please visit [www.hbf.com](http://www.hbf.com) to request an actual sample.

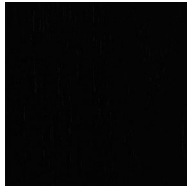
QUARTER SLICED WALNUT: (QNT) - (2 SHEEN UNLESS OTHERWISE INDICATED)



QNT310  
Smoke Opaque



QNT400  
Clear



QNT402  
Black Opaque



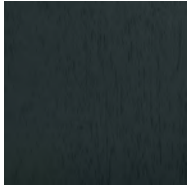
QNT403  
Grey Opaque



QNT404  
Warm White Opaque



QNT405  
Mist Opaque



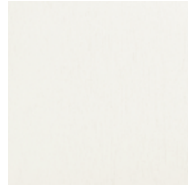
QNT406  
Denim Opaque



QNT407  
Pewter Opaque



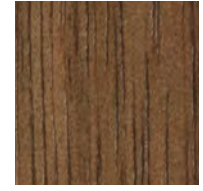
QNT408  
Peppercorn Opaque



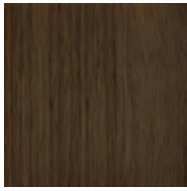
QNT902  
Designer White Opaque



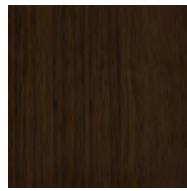
QNT911  
Warm Brick



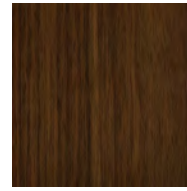
QNT929  
Nutmeg



QNT937  
Bark



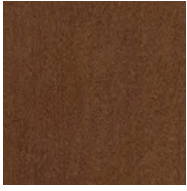
QNT984  
Dark Roast



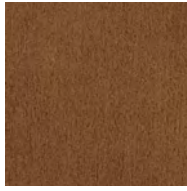
QNT993  
Sumatra

Screen images are intended as a guide only and should not be regarded as absolutely correct.  
For exact color/texture, please visit [www.hbf.com](http://www.hbf.com) to request an actual sample.

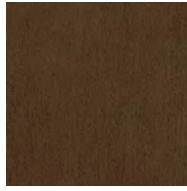
QUARTER SLICED MAPLE: (QNE) - (30 SHEEN UNLESS OTHERWISE INDICATED)



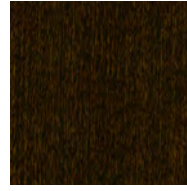
QNE215  
Medium Brown Cherry



QNE629  
Nutmeg Walnut



QNE637  
Charcoal Grey



QNE684  
Dark Roast Walnut



QNE693  
Sumatra Walnut



QNE929  
Nutmeg  
*2 Sheen*



QNE984  
Dark Roast  
*2 Sheen*

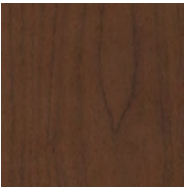


QNE993  
Sumatra  
*2 Sheen*



QNE301  
Amber  
*2 Sheen*

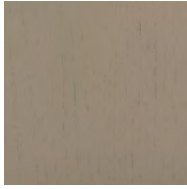
QUARTER SLICED CHERRY: (QNC) - (30 SHEEN)



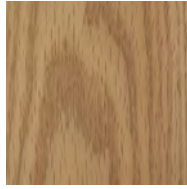
QNC215  
Med. Brown Cherry

Screen images are intended as a guide only and should not be regarded as absolutely correct. For exact color/texture, please visit [www.hbf.com](http://www.hbf.com) to request an actual sample.

QUARTER SLICED OAK: (QRK) - (2 SHEEN UNLESS OTHERWISE INDICATED)



QRK310  
Smoke Opaque



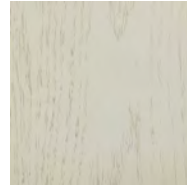
QRK400  
Clear



QRK402  
Black Opaque



QRK403  
Grey Opaque



QRK404  
Warm White Opaque



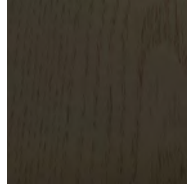
QRK405  
Mist Opaque



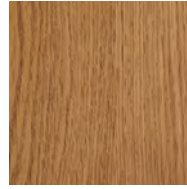
QRK406  
Denim Opaque



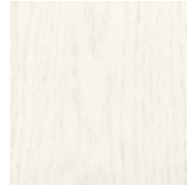
QRK407  
Pewter Opaque



QRK408  
Peppercorn Opaque



QRK901  
Amber



QRK902  
Designer White Opaque



QRK911  
Warm Brick



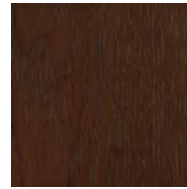
QRK929  
Nutmeg



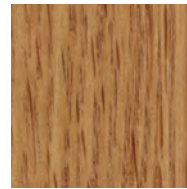
QRK937  
Bark



QRK984  
Dark Roast



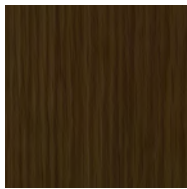
QRK993  
Sumatra



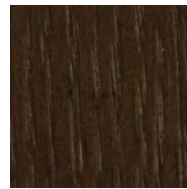
QRK301  
Amber  
30 Sheen



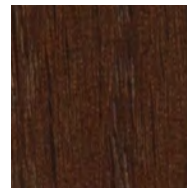
QRK629  
Nutmeg Walnut  
30 Sheen



QRK637  
Charcoal Grey Walnut  
30 Sheen



QRK684  
Dark Roast Walnut  
30 Sheen



QRK693  
Sumatra Walnut  
30 Sheen

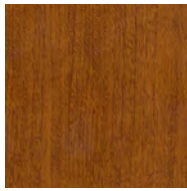
Screen images are intended as a guide only and should not be regarded as absolutely correct.  
For exact color/texture, please visit [www.hbf.com](http://www.hbf.com) to request an actual sample.



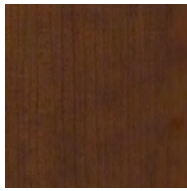
**WOOD LAMINATES: (PL)**



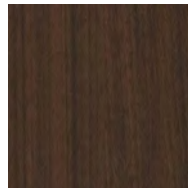
PLBW  
Beigewood



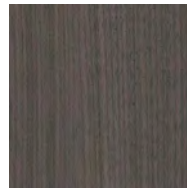
PL701  
Bourbon Cherry



PL7935  
Shaker Cherry



PL7943  
Columbian Walnut



PL7964  
Skyline Walnut

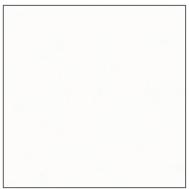


PL7965  
Walnut Heights

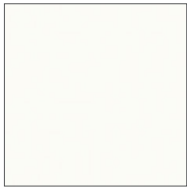


PLWP110  
Looks Likatre

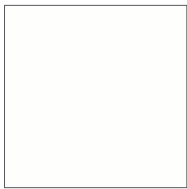
**SOLID LAMINATES:**



PLSW806  
Carnation White



PLSW803  
Eggshell White



PLWH  
Designer White

Screen images are intended as a guide only and should not be regarded as absolutely correct.  
For exact color/texture, please visit [www.hbf.com](http://www.hbf.com) to request an actual sample.





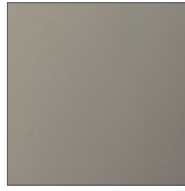
**POWDER COATS:**



BL  
Black



WI  
White



LG  
Light Grey

**METAL: - (UPCHARGES APPLY)**



PAL  
Polished Aluminum

Screen images are intended as a guide only and should not be regarded as absolutely correct.  
For exact color/texture, please visit [www.hbf.com](http://www.hbf.com) to request an actual sample.

HOW TO SPECIFY

HBF's Costa Table Series has been designed to address the needs of the constantly changing multi-purpose conference area. This simple, intuitive design enables the user to manage efficiently the everyday demands of setting up and reconfiguring a meeting room. The nesting feature and flip top provide a quick transition to storage and minimization of space. Exquisite polished aluminum legs lend character and distinction to today's conference, meeting and training areas. Costa provides reconfigurable modularity and flexibility of use.

STEP 1  
SELECT  
SHAPE | SIZE

Rectangular



24 x 60 30 x 78  
 24 x 66 30 x 84  
 24 x 72 36 x 60  
 24 x 78 36 x 66  
 24 x 84 36 x 72  
 30 x 60 36 x 78  
 30 x 66 36 x 84  
 30 x 72

Radiused Corner



24 x 24  
 30 x 30  
 36 x 36

STEP 2  
FSC® CERTIFICATION

FSC® CERTIFICATION  
 X = No FSC®  
 F = FSC® Certified (upcharges apply)

STEP 3  
SELECT FINISH

Costa tables are available in a choice of veneers and finishes or various laminates. Please see Materials & Finishes on pages 4-17 for finish lists and option codes.

*The remainder of this process on the following page does not apply to Radiused Corner Tables.*

STEP 4  
SELECT  
BASE STYLE

Costa tables are available with a fixed or flip top. The flip top incorporates a mechanism that allows the table to transition quickly to storage and minimization of space. Costa metal bases incorporate wire management capabilities.

FLIP TOP



FIXED TOP



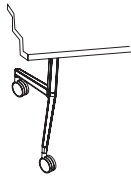
BASE STYLE

FPA = Flip Top, Polished Aluminum Base  
 FBL = Flip Top, Black Powder Coat Base  
 FWI = Flip Top, White Powder Coat Base  
 FLG = Flip Top, Grey Powder Coat Base

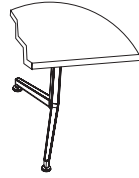
FXPA = Fixed Top, Polished Aluminum Base  
 FXBL = Fixed Top, Black Powder Coat Base  
 FXWI = Fixed Top, White Powder Coat Base  
 FXLG = Fixed Top, Grey Powder Coat Base

STEP 5  
SELECT FOOT

Locking Casters



Glides



STEP 6  
SELECT  
MODESTY  
PANEL

Modesty panels are available. Modesty panels are 8" high and 1/2" shorter than the overall width of the specified top. All modesty panels are hinged and pivot out of way when flip top mechanism is actuated to vertical position.

No Modesty Panel  
MN



Modesty Panel  
MY

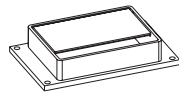


*Modesty panel material and finish are the same selection as the top material and finish (upcharges apply)*

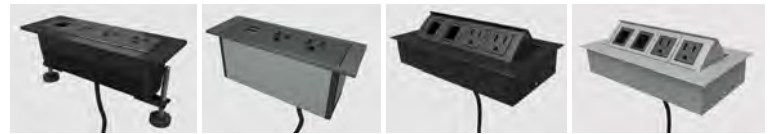
STEP 7  
SELECT  
GROMMET

The Costa table leg incorporates wire management capabilities. The leg channel serves to conceal power/data cords; opening at the base of the extruded leg allows plug passage to external power/data sources. See pg. 22 for locations and wire management information.

No Grommet  
GN



Aluminum Grommet  
AGC1



Power & Data Standard Plug (upcharges apply)

- AGC1 = Aluminum Hinged Grommet
- ABC1 = Corded Dean-Z-72" cord, Black
- AWC1 = Corded Dean-Z-72" cord, White
- ABH1 = Hardwired Dean-Z-72" whip, Black
- AWH1 = Hardwired Dean-Z-72" whip, White
- ABC2 = Corded Axil-Z-72" cord, Black
- AWC2 = Corded Axil-Z-72" cord, White
- ABH2 = Hardwired Axil-Z-72" whip, Black
- AWH2 = Hardwired Axil-Z-72" whip, White
- ABL3 = Corded MHO-72" cord, Black
- ASV3 = Corded MHO-72" cord, Silver

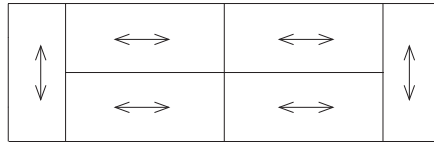
GRAIN DIRECTION

Rectangular

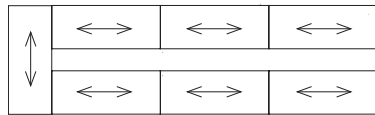


GRAIN DIRECTION  
GANGING  
CONFIGURATIONS

Configuration 1



Configuration 2



Configuration 3

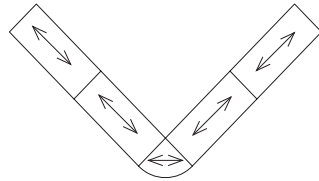


TABLE GANGING

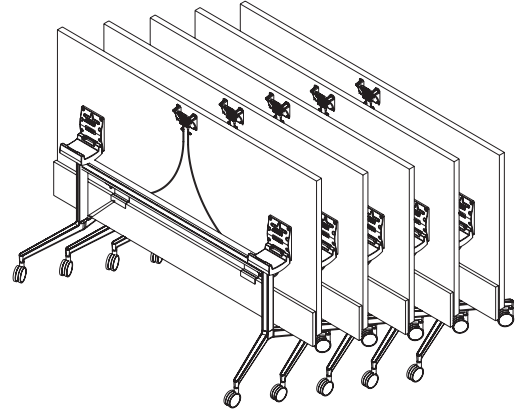
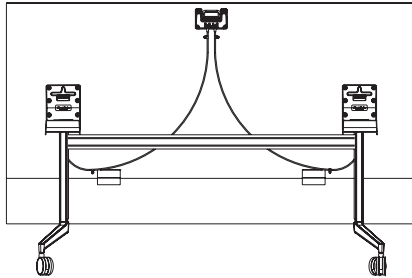
Costa tables are available with an optional ganging device used to connect multiple tables. The ganging device swivels out of the way when not in use.

Costa tables are pre-drilled and include inserts to accept ganging devices, but they must be ordered separately.

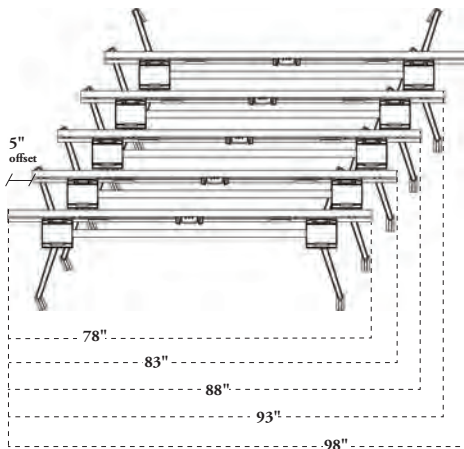


FLIP TOP,  
NESTING

To address the needs of the constantly changing multi-purpose conference area, Costa provides reconfigurability, modularity and flexibility of use. The simple, intuitive design enables the user to manage efficiently the everyday demands of setting up and reconfiguring a meeting room. The nesting feature and flip top options provide a quick transition to storage and minimization of space.

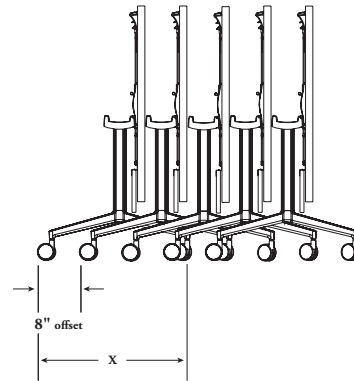


The nesting mechanism releases the flip top and allows it to tilt and lock into place. The locking feature latches the table top into the nesting position. Integral bumpers protect tables when in nested position.



**Nested Tables, Top View**  
(Dimensions based on 78" tabletop)

NOTE: 5" width offset per table



**Nested Tables, Side View**

NOTE: 8" depth offset per table

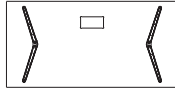
TABLE BASE DEPTH

24" depth tables	x = 23.75
30" depth tables	x = 29.75
36" depth tables	x = 29.75

**GROMMET LOCATIONS**

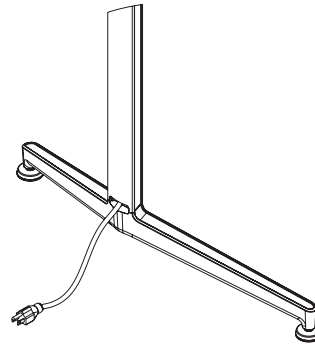
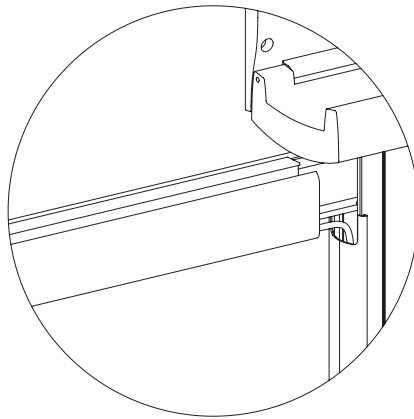
Costa tables can be specified to include an aluminum grommet or one of several power / data units. The drawing below indicates the standard table top surface placement for the units. The units are always centered, as shown, with distance from edge determined by top shape.

Rectangular



**WIRE MANAGEMENT**

The Costa extruded metal horizontal support beam includes a plastic wire manager when a power/data unit or grommet is specified. The polished aluminum leg incorporates wire management capabilities by means of a removable vertical leg cover. The leg channel serves to conceal power/data cords; the opening at the base of the extruded leg allows plug passage to external power/data sources.



**ELECTRICAL SYSTEM**

Costa Tables are available in 3 electrical in-feed options: corded standard plug, hardwire with quick disconnect, or hardwire. Installation and use of electrical systems, the number of receptacles per circuit, and connections to the building power supply should be in compliance with all local and national electrical codes. Verify code requirements before ordering. Wire harnesses and snap connectors are not allowed in Chicago. Customer must furnish electrical wiring components in cases where the Costa electrical system does not meet code.

The ports offered in Costa Tables can plug directly into a floor or wall outlet. However, if you plan to daisy-chain the tables or don't have access to power for each of the tables you can order the electrical system based on Byrne 4-Trac in addition to the ports or grommets. All the components of this system are UL listed (UL 183) with the exception of the standard plug power in-feed that is UL recognized (UL 1286).

All flexible parts are metal conduit with the exception of the last section of the power in feed with plug.

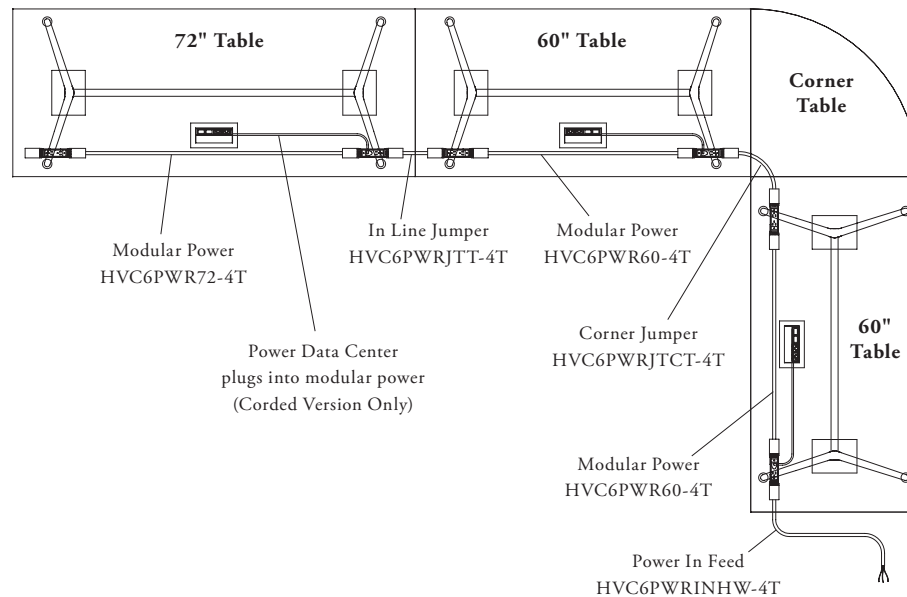
Please check with the local authorities for compliance with the electrical requirements for your market and always use a certified electrician for the installation.

**HOW TO ORDER**

1. Determine the required amps for the setup and decide if you are going to use one or two circuits. You need to use a certified electrician for circuit load estimates and install.
2. Select the Modular Power units for each of the tables. If you use 2 circuits order "Duplex Circuit 2", two per table and replace the "Circuit 1 duplex" that ships standard with the Modular Power on half of the total number of tables.
3. Select a power in-feed (plug, hardwire, rotating entry).

**4-TRAC SYSTEM**

The 4-Trac electrical system is rated for 20amp per circuit however, according to the National Electrical Code for continuous use, one should budget for 16amp per circuit. The total length of the circuit should not exceed 300" and 13 duplexes. However, some units such as projectors, desktop computers and monitors can draw more current and limit further the number of units you can plug in a circuit. Please consult with your local electrician to determine the best solution for your needs.

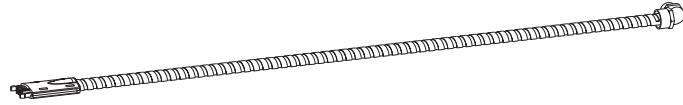


**POWER IN-FEED**

Power In-feed allows you to bring power from a floor or wall mounted power box. All of the 3 solutions below do not restrict the tables to connect in a certain sequence:

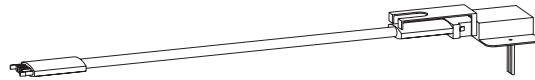
**POWER IN-FEED HARDWARE**

This unit has 4-wires at one end and a modular connector at the other end. The modular end connects to a duplex receptacle installed under the table top. This is a 20 amp, 2-circuit unit.



**ROTATING POWER IN-FEED WITH QUICK DISCONNECT**

This unit replaces a wall outlet to allow for quick disconnect from the wall. Can be used in place of the power in-feed hardware if the code requires a hard wire connection to the building. This is a 20 amp, 2-circuit unit. Includes a 72" jumper, which connects to a duplex receptacle installed under the table top.



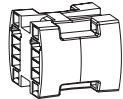
**POWER IN-FEED WITH PLUG**

This unit has a standard plug at one end and a modular connector at the other end. The modular end connects to a duplex receptacle installed under the table top. This is a 20 amp, 1-circuit unit; it will not fit in a 15 amp power outlet.



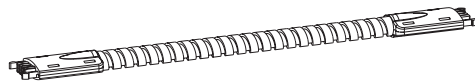
**4-WIRE H CONNECTOR**

This unit can be used when you need to bring power to a series of daisy chained tables somewhere else than at the ends of the chain. This acts as a T-splitter and connects to 3 jumpers (two from the tables and one from the power source). This is usually used in conjunction with one of the 3 power solutions listed above.



**JUMPER**

Is used to connect: table-table, table-corner-table, H-connector to rotating power in feed.



**MODULAR POWER**

Attaches under the table top and stays with the top when the table is moved, flipped or nested. The unit has a power duplex at each end. The standard configuration is Circuit 1 only. Using a single circuit allows for non-sequential configuration but reduces the number of tables that can be daisy chained. If you need to connect more tables that share a single power in-feed you need to alternate the tables to include Circuit 2 (e.g. 4 tables in a row will be configure as follows: Table 1 C1, Table 2 C2, Table 3 C1, Table 4 C2). To alternate circuits you can buy the standard Modular Power for the table size you need and then buy separate Circuit 2 duplexes (you need 2 per table) and replace these in the field. You would also need to keep track of the tables sequence to make sure you alternate Circuit 1 and 2 – the tables become sequential now.







---

VENEERS	Costa tables are offered in 5 natural wood species; Ash, Cherry, Maple, Walnut or Oak veneer. All exposed wood surfaces utilize select Plain Sliced Ash, Oak, Cherry, Maple, Walnut veneers or premium Quarter Sliced Ash, Oak, Cherry, Maple, Walnut and Rift Cut Oak veneers. These veneers are carefully selected and slip matched to assure balance and consistency throughout the product.
WOOD TOPS	Wood veneer tops feature a balanced 3-ply construction and are 1 5/16" thick. Tops are constructed of 45 lb particleboard, faced with veneer and backed with a polymer resin impregnated moisture resistant backer material. Tops are externally edge banded with 3/32" solid hardwood band on all sides. Standard square edge profile. Bottom of tops are pre-bored for base attachment locations and include threaded steel inserts to mount removable ganging hardware.
LAMINATE TOPS	<p>Laminate tops feature a balanced 3-ply construction and are 1 3/16" thick. Tops are constructed of 45 lb particleboard, faced with high pressure vertical grade laminate and backed with phenolic backer material. All laminate tops have a 3mm matching vinyl edgeband on all sides. Standard square edge profile. Bottom of tops are pre-bored for base attachment locations and include threaded steel inserts to mount removable ganging hardware.</p> <p>Wood grain laminates have been selected because they are good matches to some HBF standard wood finishes. Although these are good matches, they are not exact matches. HBF does not guarantee an exact wood finish match to the plastic laminates. Please check with a HBF sales representative for samples of both the wood and laminate for color comparison.</p> <p>Wilsonart laminate tops feature a 0.030" thick, Type 335 high pressure vertical grade Wilsonart laminate. For complete Wilsonart technical specifications please refer to the Wilsonart website at <a href="http://www.wilsonartcontract.com/Technical/">http://www.wilsonartcontract.com/Technical/</a></p> <p>Pionite laminate tops feature a 0.028" thick, Type F28 high pressure vertical grade Pionite Laminate. For complete Pionite technical specifications please refer to the Pionite website at <a href="http://www.pionite.com/pionite/pages_pionite/pionite_specs.html">http://www.pionite.com/pionite/pages_pionite/pionite_specs.html</a></p>
MODESTY PANELS	Modesty panels are optional and can be specified in wood or laminate; however, material and finish will match top. Modesty panels feature a balanced 3-ply construction and are 3/4" thick. Wood panels are constructed of 45 lb particleboard with veneer on both sides. All edges banded with veneer. Laminate panels are constructed of 45 lb high pressure vertical grade laminate on both sides. All edges finished with matching bands. Modesty panel connects to bottom of the worksurface with a hinged metal steel bracket which allows the panel to pivot and remain in a vertical position when the table is flipped up for nesting.
BASES	<p>All bases are available with a fixed or flip top. The flip top base includes a single handle that activates a plastic coated steel cable connected to a folding mechanism that allows the top to pivot 90-degrees to facilitate nesting. The mechanism locks the top in the horizontal and vertical position and the handle must be compressed to unlock. The lower horizontal foot is a polished aluminum casting. The vertical leg section and the horizontal beam that ties the two bases together are extruded aluminum with a polished anodized finish.</p> <p>The inside of the vertical leg incorporates a removable vertical leg cover that snaps on the leg to manage wires. This channel serves to conceal power/data cords. An opening is located at the top and bottom of the cover to provide clearance for cords to pass out of the leg channel.</p> <p>The aluminum horizontal support beam has channeled grooves that allow a plastic wire management channel to be easily snapped in for wire management.</p> <p>The bases are offered in 3 1/8" diameter casters with standard locking.</p> <p>The table ships KD and requires field installation.</p>

---

**GSA/FEDERAL CONTRACT INFORMATION:****GSA Contract Number 47QSM A22D08P9**

Model numbers identified with the following verbiage "When purchased separately without a configurable TAA compliant end product, not on GSA contract" is to mean that these configurable parts or components:

- Have no functionality or capability without being integrated into an end product; and
- Are considered **Open Market** if purchased without a configurable TAA compliant end product.



**CORNER UNITS** Corner units are designed to be used in conjunction with rectangular tops. The 90 degree corners are attached in the field with metal steel brackets and threaded knobs that attach to the steel inserts on the bottom of the worksurface for easy removal without tools. Connection hardware included with corner unit.

**GROMMETS** Optional 3 5/8”D x 5”W rectangular grommet. Grommet bezel is inset flush to top of worksurface. Includes a hinged door that is on a dampening hinge for smooth open/close.

**POWER / DATA** Optional power / data unit is 4 7/16”D x 8 5/16”W, silver clear anodized aluminum finish. Unit includes a 6-ft, 15 amp standard plug-in power cord, (2) electrical outlets and (2) voice/data openings. Voice/data communication adapter kit included. Adapter kit allows for a variety of jacks to be field installed including RJ11, RJ45, USB, VGA, etc. Unit is field installed. UL Listed. Note: voice/data jacks not included.

**WOOD FINISH** All HBF tops feature an open pore, water based, UV cured low-emitting finish. The open pore finish accentuates the natural texture of the wood. All non-writing surfaces (modesty panels) receive an application of low-emitting, conversion varnish finish. Both processes enhance the beauty of the natural wood and ensure the depth, clarity, color consistency and durability throughout the life of the product.

**CLEANING WOOD** Dust with damp cloth. Remove fingerprints or soiling with mild solution; 3 parts water with small amount of mild dish detergent. Apply solution with spray bottle, wipe clean and dry with soft cloth. Note: Do not use furniture polishes containing oil, wax or silicone, which can produce an oily film or haze.

**CLEANING LAMINATE** To clean the surface, use a damp cloth or sponge and a mild soap or detergent. For complete Care and Maintenance instructions go to [www.wilsonartcontract.com](http://www.wilsonartcontract.com) or [www.pionite.com](http://www.pionite.com).

**LAMINATE**

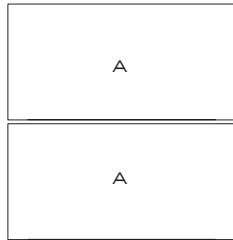
CROSS REFERENCE	DESCRIPTION	OPTION CODE	MANUFACTURER	PART #
	Bourbon Cherry	PL701	Wilsonart	11034-07
	Shaker Cherry	PL7935	Wilsonart	7935-7
	Walnut Heights	PL7965	Wilsonart	7965K-78
	Columbian Walnut	PL7943	Wilsonart	7943-7
	Skyline Walnut	PL7964	Wilsonart	7964K-78
	Beigewood	PLBW	Wilsonart	7850-60
	Looks Likatre	PLWP110	Pionite	WP110
	Designer White	PLWH	Wilsonart	D354-60
	Carnation White	PLSW806	Pionite	SW806
	Eggshell White	PLSW803	Pionite	SW803



	PAGE
Teaming I .....	27
Classroom I .....	27
Open Rectangle .....	28
Video Conference .....	29
C Shape Conference.....	29
V Shape Conference.....	30
U Shape Conference .....	30

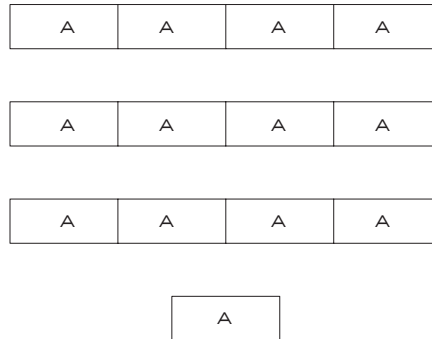


TEAMING I



Item	Model	Description	List Price	Plain Sliced Core	Quarter Sliced Core	Quantity	Ext. Plain Sliced Core	Ext. Quarter Sliced Core
A	HWC61802E-293060W	Rectangular Flip, Casters, 30" x 60"		4,355	4,485	2	8,710	8,970
<b>Total</b>							<b>8,710</b>	<b>8,970</b>

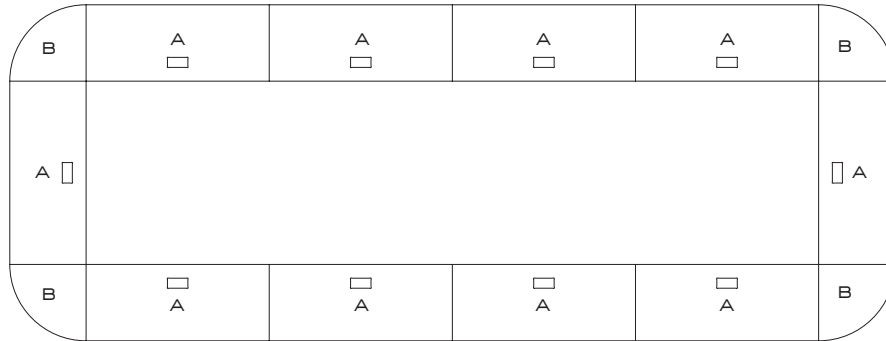
CLASSROOM I



Item	Model	Description	List Price Laminate	Quantity	List Price Ext. Laminate
A	HWC61802E-293072L	Rectangular Flip, Casters, 30" x 72", Modesty Panel	3,280	13	42,640
<b>Total</b>					<b>42,640</b>



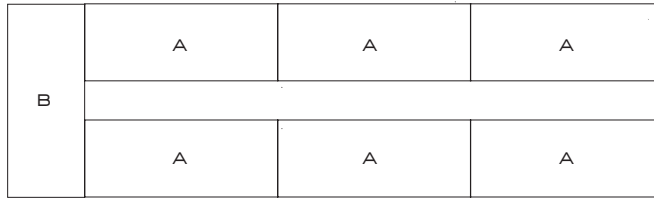
OPEN RECTANGLE



Item	Model	Description	List Price	Plain Sliced Core	Quarter Sliced Core	Quantity	Ext. Plain Sliced Core	Ext. Quarter Sliced Core
A	HWC61802E-293072W	Rectangular Flip, Casters, 30" x 72", Grommet	4,705		4,845	10	47,050	48,450
B	HWC61801C-1530W	Radiused Corner, 30"		2,325	2,395	4	9,300	9,580
<b>Total</b>							<b>56,350</b>	<b>58,030</b>

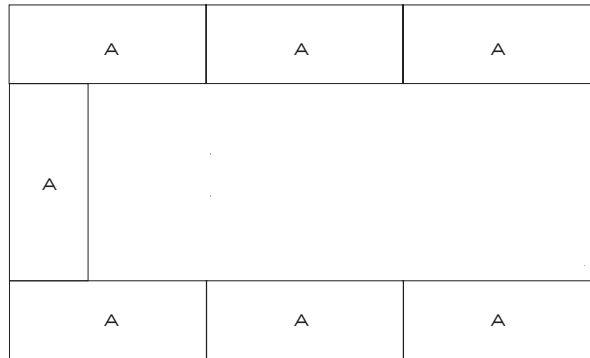


VIDEO CONFERENCE



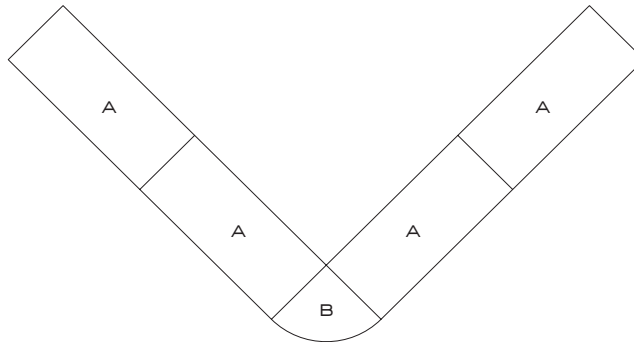
Item	Model	Description	List Price	Plain Sliced Core	Quarter Sliced Core	Quantity	Ext. Plain Sliced Core	Ext. Quarter Sliced Core
A	HWC61802E-293078W	Rectangular, Flip, Casters, 30" x 78", Power		4,970	5,120	6	29,820	30,720
B	HWC61802E-293072W	Rectangular, Flip, Casters, 30" x 72"		4,705	4,845	1	4,705	4,845
<b>Total</b>							<b>34,525</b>	<b>35,565</b>

C SHAPE CONFERENCE



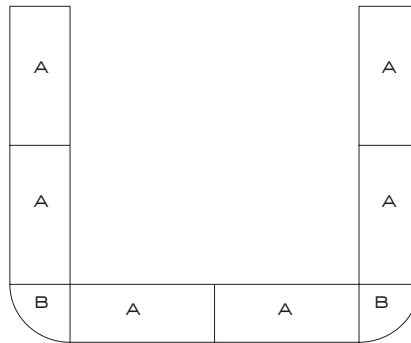
Item	Model	Description	List Price	Plain Sliced Core	Quarter Sliced Core	Quantity	Ext. Plain Sliced Core	Ext. Quarter Sliced Core
A	HWC61802E-293066W	Rectangular, Flip, Casters, 30" x 66"		4,610	4,750	7	32,270	33,250
<b>Total</b>							<b>32,270</b>	<b>33,250</b>

V SHAPE CONFERENCE



Item	Model	Description	List Price	Plain Sliced Core	Quarter Sliced Core	Quantity	Ext. Plain Sliced Core	Ext. Quarter Sliced Core	
A	HWC61802E-293072W	Rectangular, Flip, Casters, 30" x 72"	4,705	4,705	4,485	4	18,820	19,380	
B	HWC61801C-1530W	Radiused Corner, 30"	2,325	2,325	2,395	1	2,325	2,395	
<b>Total</b>								<b>21,145</b>	<b>21,775</b>

U SHAPE CONFERENCE






Item	Model	Description	List Price Laminate	Quantity	List Price Ext. Laminate
A	HWC61802E-293072L	Rectangular, Flip, Casters, 30" x 72", Mod. Panel	3,280	6	19,680
B	HWC61801C-1530L	Radiused Corner, 30"	1,395	2	2,790
<b>Total</b>					<b>22,470</b>



	PAGE
Rectangular Tables.....	32
Radiused Corner Tables.....	34
Electrical .....	36
Replacement Accessories .....	37





Model	Dimensions			List Price Plain Sliced, Core Finish	Quarter Sliced, Core Finish	Modesty Panel	
	OH	OD	OW				
<b>24" DEPTH</b>							
	HWC61801E-292460W	29	24	60	<b>3,720</b>	<b>3,830</b>	<b>+835</b>
	HWC61801E-292466W	29	24	66	<b>3,970</b>	<b>4,090</b>	<b>+875</b>
	HWC61801E-292472W	29	24	72	<b>4,075</b>	<b>4,195</b>	<b>+885</b>
	HWC61801E-292478W	29	24	78	<b>4,320</b>	<b>4,450</b>	<b>+1000</b>
	HWC61801E-292484W	29	24	84	<b>4,545</b>	<b>4,680</b>	<b>+1015</b>
<b>30" DEPTH</b>							
	HWC61802E-293060W	29	30	60	<b>4,355</b>	<b>4,485</b>	<b>+835</b>
	HWC61802E-293066W	29	30	66	<b>4,610</b>	<b>4,750</b>	<b>+875</b>
	HWC61802E-293072W	29	30	72	<b>4,705</b>	<b>4,845</b>	<b>+885</b>
	HWC61802E-293078W	29	30	78	<b>4,970</b>	<b>5,120</b>	<b>+1000</b>
	HWC61802E-293084W	29	30	84	<b>5,255</b>	<b>5,415</b>	<b>+1015</b>
<b>36" DEPTH</b>							
	HWC61803E-293660W	29	36	60	<b>4,995</b>	<b>5,145</b>	<b>+835</b>
	HWC61803E-293666W	29	36	66	<b>5,255</b>	<b>5,415</b>	<b>+875</b>
	HWC61803E-293672W	29	36	72	<b>5,345</b>	<b>5,505</b>	<b>+885</b>
	HWC61803E-293678W	29	36	78	<b>5,605</b>	<b>5,775</b>	<b>+1000</b>
	HWC61803E-293684W	29	36	84	<b>5,895</b>	<b>6,070</b>	<b>+1015</b>



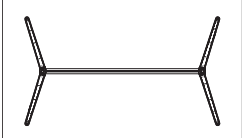
NOTES :

- Grommets and power/data center are included when specified (with upcharge)

MODEL NUMBER	FSC*	FINISH	BASE STYLE	FOOT	MODESTY	GROMMET
	X = Standard - No FSC*	<i>See pages 4 - 14.</i>	<i>Note: Base Options drive grommet and casters options.</i>	<i>Base selection drives Foot (Caster) selection</i>	<i>Note: Modesty Panels same material and finish as top.</i>	GN = Grommet No
	F = FSC* Certified	Plain Sliced AH = Ash NT = Walnut RK = Oak NE = Maple NC = Cherry	FPA = Flip Top, Polished Aluminum Base <b>+\$150</b>	C = Caster G = Glide	MN = Modesty Panel - No MY = Modesty Panel Wood - Yes	AGC1 = Aluminum Hinged Grommet <b>+\$610</b>
		Quarter Sliced QAH = Ash QNT = Walnut QRK = Oak QNE = Maple QNC = Cherry	FBL = Flip Top, Black Powder Coat Base			ABC1 = Corded, Dean-Z-72" cord, Black <b>+\$710</b>
		Rift Cut RF = Oak Rift Cut	FWI = Flip Top, White Powder Coat Base			AWC1 = Corded, Dean-Z-72" cord, White <b>+\$710</b>
			FLG = Flip Top, Grey Powder Coat Base			ABH1 = Hardwired, Dean-Z-72" whip, Black <b>+\$745</b>
			FXPA = Fixed Top, Polished Aluminum Base <b>+\$150</b>			AWH1 = Hardwired, Dean-Z-72" whip, White <b>+\$745</b>
			FXBL = Fixed Top, Black Powder Coat Base			ABC2 = Corded, Axil-Z-72" cord, Black <b>+\$755</b>
			FXWI = Fixed Top, White Powder Coat Base			AWC2 = Corded, Axil-Z-72" cord, White <b>+\$710</b>
			FXLG = Fixed Top, Grey Powder Coat Base			ABH2 = Hardwired, Axil-Z-72" whip, Black <b>+\$790</b>
						AWH2 = Hardwired, Axil-Z-72" whip, White <b>+\$740</b>
						ABL3 = Corded, MHO-72" cord, Black <b>+\$450</b>
						ASV3 = Corded, MHO-72" cord, Silver <b>+\$450</b>

Model.FSC.Top Finish.Base Style.Foot.Modesty Panel.Grommet/Power Example order string: HWC61801E-292460W.X.AH400.FBL.C.MN.GN



Model	Dimensions			List Price Laminate	Modesty Panel	
	OH	OD	OW			
<b>24" DEPTH</b>						
	HWC61801E-292460L	29	24	60	<b>2,815</b>	<b>+635</b>
	HWC61801E-292466L	29	24	66	<b>2,960</b>	<b>+660</b>
	HWC61801E-292472L	29	24	72	<b>3,135</b>	<b>+670</b>
	HWC61801E-292478L	29	24	78	<b>3,450</b>	<b>+760</b>
	HWC61801E-292484L	29	24	84	<b>3,590</b>	<b>+770</b>
<b>30" DEPTH</b>						
	HWC61802E-293060L	29	30	60	<b>2,935</b>	<b>+635</b>
	HWC61802E-293066L	29	30	66	<b>3,100</b>	<b>+660</b>
	HWC61802E-293072L	29	30	72	<b>3,280</b>	<b>+670</b>
	HWC61802E-293078L	29	30	78	<b>3,605</b>	<b>+760</b>
	HWC61802E-293084L	29	30	84	<b>3,760</b>	<b>+770</b>
<b>36" DEPTH</b>						
	HWC61803E-293660L	29	36	60	<b>3,055</b>	<b>+635</b>
	HWC61803E-293666L	29	36	66	<b>3,230</b>	<b>+660</b>
	HWC61803E-293672L	29	36	72	<b>3,410</b>	<b>+670</b>
	HWC61803E-293678L	29	36	78	<b>3,740</b>	<b>+760</b>
	HWC61803E-293684L	29	36	84	<b>3,900</b>	<b>+770</b>

NOTES:

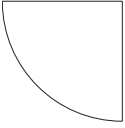
- Grommets and power/data center are included when specified (with upcharge)

MODEL NUMBER	LAMINATE	BASE STYLE	FOOT	MODESTY	GROMMET
	See page 15.	<i>Note: Base Options drive grommet and casters options.</i>	<i>Base selection drives Foot (Caster) selection</i>	<i>Note: Modesty Panels same material and finish as top.</i>	
		FPA = Flip Top, Polished Aluminum Base <b>+\$150</b>	C = Caster G = Glide	MN = Modesty Panel - No MY = Modesty Panel Wood - Yes	GN = Grommet No AGC1 = Aluminum Hinged Grommet <b>+\$375</b> ABC1 = Corded, Dean-Z-72" cord, Black <b>+\$595</b> AWC1 = Corded, Dean-Z-72" cord, White <b>+\$595</b> ABH1 = Hardwired, Dean-Z-72" whip, Black <b>+\$595</b> AWH1 = Hardwired, Dean-Z-72" whip, White <b>+\$630</b> ABC2 = Corded, Axil-Z-72" cord, Black <b>+\$630</b> AWC2 = Corded, Axil-Z-72" cord, White <b>+\$640</b> ABH2 = Hardwired, Axil-Z-72" whip, Black <b>+\$595</b> AWH2 = Hardwired, Axil-Z-72" whip, White <b>+\$670</b> ABL3 = Corded, MHO-72" cord, Black <b>+\$450</b> ASV3 = Corded, MHO-72" cord, Silver <b>+\$450</b>
		FBL = Flip Top, Black Powder Coat Base			
		FWI = Flip Top, White Powder Coat Base			
		FLG = Flip Top, Grey Powder Coat Base			
		FXPA = Fixed Top, Polished Aluminum Base <b>+\$150</b>			
		FXBL = Fixed Top, Black Powder Coat Base			
		FXWI = Fixed Top, White Powder Coat Base			
		FXLG = Fixed Top, Grey Powder Coat Base			

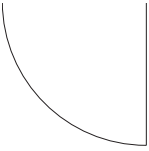
Model.Laminate.Base Style.Foot.Modesty Panel.Grommet/Power Example order string: HWC61801E-292460L.PLBW.FBL.C.MN.GN



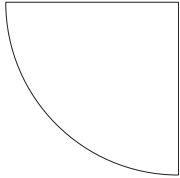
	Model	Dimensions			List Price	Plain Sliced Core	Quarter Sliced Core
		OH	OD	OW			
24" CONNECTING END	HWC61801C-1524W	1¼	24	24	1,685		1,735



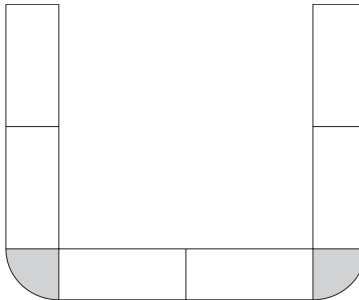
30" CONNECTING END	HWC61801C-1530W	1¼	30	30	2,325		2,395
--------------------	-----------------	----	----	----	-------	--	-------



36" CONNECTING END	HWC61801C-1536W	1¼	36	36	2,960		3,050
--------------------	-----------------	----	----	----	-------	--	-------



EXAMPLE:

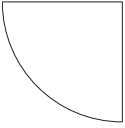


MODEL NUMBER	FSC*	FINISH
	X = Standard - No FSC*	See pages 4 - 14.
	F = FSC* Certified	Plain Sliced
		AH = Ash
		NT = Walnut
		RK = Oak
		NE = Maple
		NC = Cherry
		Quarter Sliced
		QAH = Ash
		QNT = Walnut
		QRK = Oak
		QNE = Maple
		QNC = Cherry
		Rift Cut
		RF = Oak Rift Cut

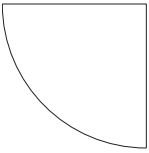
Model.FSC.Top Finish Example order string: HWC61801C-1524W.X.AH400



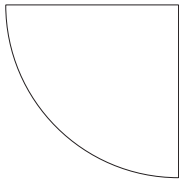
	Model	Dimensions			List Price Laminate
		OH	OD	OW	
24" CONNECTING END	HWC61801C-1524L	1¼	24	24	<b>1,335</b>



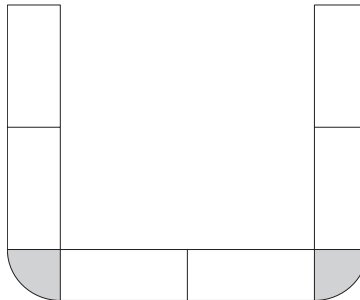
30" CONNECTING END	HWC61801C-1530L	1¼	30	30	<b>1,395</b>
--------------------	-----------------	----	----	----	--------------



36" CONNECTING END	HWC61801C-1536L	1¼	36	36	<b>1,495</b>
--------------------	-----------------	----	----	----	--------------



EXAMPLE:




PLEASE SPECIFY THE FOLLOWING TO ORDER: \_\_\_\_\_

MODEL NUMBER	LAMINATE
	<i>See page 15.</i>

Model.Top Finish Example order string: HWC61801C-1524L.PLBW



		Model	Dimensions			List Price
			OD	OW	OH	
<b>MODULAR POWER CIRCUIT 1 DUPLEXES INCLUDED</b> 	60" Tops	HVC6PWR60-4T	1 3/4	50 3/8	1	<b>235</b>
	66" Tops	HVC6PWR66-4T	1 3/4	56 3/8	1	<b>240</b>
	72" Tops	HVC6PWR72-4T	1 3/4	62 3/8	1	<b>245</b>
	78" Tops	HVC6PWR78-4T	1 3/4	68 3/8	1	<b>265</b>
	84" Tops	HVC6PWR84-4T	1 3/4	74 3/8	1	<b>275</b>

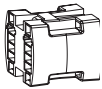
<b>POWER IN-FEED</b>	Standard Plug	HVC6PWRINSP-4T	1 3/4	72	1	<b>350</b>
	Hardwire	HVC6PWRINH-4T	1 3/4	72	1	<b>350</b>
	Hardwire Quick-disconnect	HVC6PWRINQD-4T	1 3/4	72	1	<b>350</b>

<b>JUMPERS</b> 	Table to Table	HVC6PWRJTT-4T	1 3/4	9 3/8	1	<b>100</b>
	End Table/ Corner Table	HVC6PWRJTCT-4T	1 3/4	21 1/4	1	<b>100</b>

<b>CIRCUIT 2 DUPLEX (OPTIONAL)</b>		HVC6PWRDP2-4T	1 3/4	5 9/16	1	<b>80</b>
------------------------------------	--	---------------	-------	--------	---	-----------



<b>H CONNECTOR (OPTIONAL)</b>		HVC6PWRHCON-4T	1 1/2	1 1/2	3/4	<b>100</b>
-------------------------------	--	----------------	-------	-------	-----	------------



**NOTES:**

- All modular power units ship standard with Circuit 1 duplexes only
- Circuit 2 duplexes may be ordered separately and swapped out in the field

PLEASE SPECIFY THE FOLLOWING TO ORDER: \_\_\_\_\_

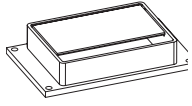
MODEL NUMBER



Example order string: HVC6PWR60-4T



	Model	Dimensions			List Price
		OD	OW	OH	
ALUMINUM HINGED GROMMET	HVC6GRM-A	4 5/16	6 13/16	1	<b>400</b>



NOTES

- Replacement only

POWER/DATA CENTER	HVC6DPS-BL	<i>72" cord, black</i>	2 2/5	8 3/8	2 1/2	<b>425</b>
	HVC6DPS-WI	<i>72" cord, white</i>	2 2/5	8 3/8	2 1/2	<b>425</b>
	HVC6DPH-BL	<i>72" cord, black</i>	2 2/5	8 3/8	2 1/2	<b>470</b>
	HVC6DPH-WI	<i>72" cord, white</i>	2 2/5	8 3/8	2 1/2	<b>470</b>
	HVC6AXH-BL	<i>72" whip, black</i>	3	8	3 1/2	<b>540</b>
	HVC6AXH-WI	<i>72" whip, white</i>	3	8	3 1/2	<b>465</b>
	HVC6AXS-BL	<i>72" cord, black</i>	3	8	3 1/2	<b>490</b>
	HVC6AXS-WI	<i>72" cord, white</i>	3	8	3 1/2	<b>405</b>
	HVC6MHO-BL	<i>72" cord, black</i>	4 7/16	8 3/8	2 1/2	<b>580</b>
	HVC6MHO-S	<i>72" cord, silver</i>	4 7/16	8 3/8	2 1/2	<b>580</b>



NOTES

- Replacement only

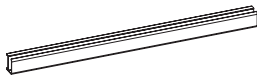
TABLE GANGING (QUANTITY 2)	HWC6GANG	4	7	1/4	<b>225</b>
-------------------------------	----------	---	---	-----	------------



NOTES

- Must be ordered separately
- 1 set is required for each table to table connection

WIRE MANAGER TROUGH	HVC6WM	1 1/2	42	2 3/4	<b>80</b>
---------------------	--------	-------	----	-------	-----------



NOTES

- Replacement only

PLEASE SPECIFY THE FOLLOWING TO ORDER: \_\_\_\_\_

MODEL NUMBER



Example order string: HVC6GRM-A



MODEL NUMBER	WEIGHT	CUBES	PAGE
HWC61801C-1524L	28	1.9	35
HWC61801C-1524W	28	1.9	34
HWC61801C-1530L	38	2.8	35
HWC61801C-1530W	38	2.8	34
HWC61801C-1536L	48	4	35
HWC61801C-1536W	48	4	34
HWC61801E-292460L	92	8.9	33
HWC61801E-292460W	116	12.2	32
HWC61801E-292466L	98	9.7	33
HWC61801E-292466W	92	8.9	32
HWC61801E-292472L	104	10.5	33
HWC61801E-292472W	98	9.7	32
HWC61801E-292478L	110	11.4	33
HWC61801E-292478W	104	10.5	32
HWC61801E-292484L	116	12.2	33
HWC61801E-292484W	110	11.4	32
HWC61802E-293060L	107	10.8	33
HWC61802E-293060W	107	10.8	32
HWC61802E-293066L	114	11.9	33
HWC61802E-293066W	114	11.9	32
HWC61802E-293072L	121	12.9	33
HWC61802E-293072W	121	12.9	32
HWC61802E-293078L	128	13.9	33
HWC61802E-293078W	128	13.9	32
HWC61802E-293084L	135	15	33
HWC61802E-293084W	135	15	32
HWC61803E-293660L	120	12.8	33
HWC61803E-293660W	120	12.8	32
HWC61803E-293666L	128	14	33
HWC61803E-293666W	128	14	32
HWC61803E-293672L	136	15.2	33
HWC61803E-293672W	136	15.2	32
HWC61803E-293678L	144	16.5	33
HWC61803E-293678W	144	16.5	32
HWC61803E-293684L	153	17.7	33
HWC61803E-293684W	153	17.7	32
HVC6PWR60-4T	5	0.7	36
HVC6PWR66-4T	6	0.8	36
HVC6PWR72-4T	7	0.9	36
HVC6PWR78-4T	8	1	36
HVC6PWR84-4T	9	1.1	36
HVC6PWRDP2-4T	1	0.1	36
HVC6PWRHCON-4T	2	0.1	36
HVC6PWRINHW-4T	5	0.6	36
HVC6PWRINQD-4T	5	0.6	36
HVC6PWRINSP-4T	5	0.6	36
HVC6PWRJTCT-4T	2	0.2	36
HVC6PWRJT-4T	2	0.1	36
HVC6AXH-BL	2	0.3	37
HVC6AXH-WI	2	0.3	37
HVC6AXS-BL	2	0.3	37
HVC6AXS-WI	2	0.3	37
HVC6DPH-BL	2	0.3	37
HVC6DPH-WI	2	0.3	37
HVC6DPS-BL	2	0.3	37
HVC6DPS-WI	2	0.3	37

MODEL NUMBER	WEIGHT	CUBES	PAGE
HVC6GRM-A	1	0.2	37
HWC6GANG	2	0.1	37
HVC6WM	1	0.1	37
HVC6MHO-BL	2	0.1	37
HVC6MHO-S	2	0.1	37