

HONDA



JAZZ
e:HEV

Your **new** Honda Jazz

04 Hybrid

08 Performance

12 Sport

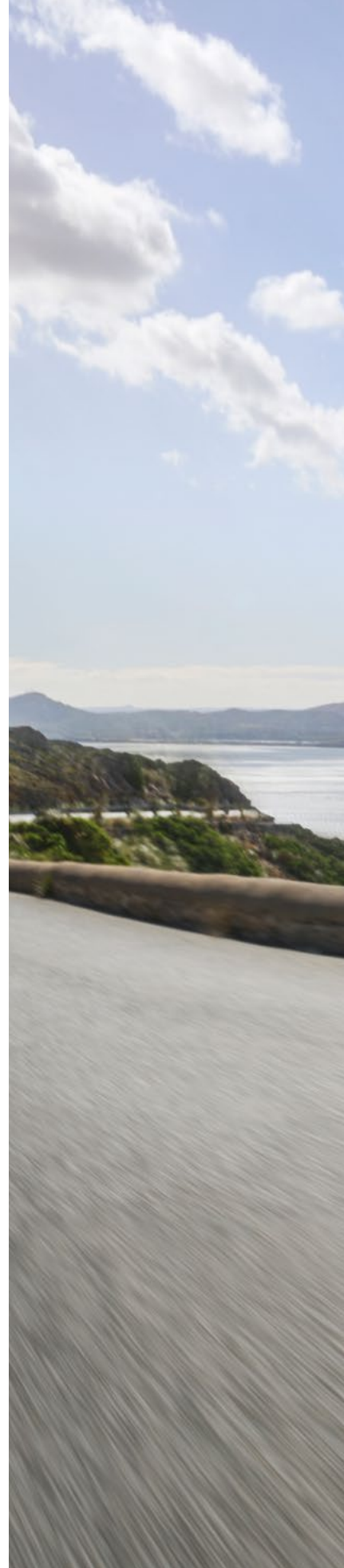
16 Exterior

22 Interior

28 Technology

34 Safety

40 Your Jazz





Model shown is the Honda Jazz 1.5 i-MMD Crosstar Advance in Fjord Mist Pearl. Left hand drive images are shown for illustration purposes only. In the UK, vehicle will be right hand drive.



e:HEV

Hybrid



Model shown is the Honda Jazz 1.5 i-MMD Crosstar Advance in Fjord Mist Pearl.

A self-charging hybrid experience

Our next-generation Honda hybrid tech is designed for a dynamic driving experience that combines a 1.5 litre engine with a lithium-ion battery. The intelligent **e:HEV self-charging hybrid powertrain** automatically selects from three drive modes: Electric, Hybrid or Engine.

Electric Drive delivers instant acceleration from standing, almost silent cruising and 100% electric drive.

Hybrid Drive combines the petrol engine and two electric motors for a highly efficient full hybrid performance.

Engine Drive uses the petrol engine to maintain higher speeds – and charges the battery while doing so.

SELF-CHARGING HYBRID
NO NEED TO PLUG IN

ADVANCED HYBRID TECHNOLOGY
EFFORTLESSLY SWITCHES DRIVE MODES







Performance



Model shown is the Honda Jazz 1.5 i-MMD Advance Sport in Urban Grey Pearl. Left hand drive images are shown for illustration purposes only. In the UK, vehicle will be right hand drive.

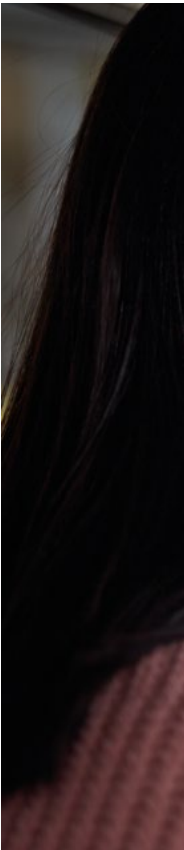
A full hybrid performance

The Jazz's responsive, self-charging full hybrid engine is fun to drive and fit for life, supplying an immense 253Nm of torque to get you going, coupled with a lively 122PS electric motor.

It means **less fuel and fewer emissions**, making it easier on the environment and your wallet – leaving you to enjoy instant power and an effortless driving experience every time.

ELECTRIC DRIVE
INSTANT LINEAR ACCELERATION

HYBRID DRIVE
REAL-WORLD EFFICIENCY







Sport



Model shown is the Honda Jazz 1.5 i-MMD Advance Sport in Urban Grey Pearl.
Left hand drive images are shown for illustration purposes only. In the UK,
vehicle will be right hand drive.

The **new** Jazz Advance Sport

Turn heads with the new Jazz Advance Sport. Its next level looks include a new grille design, an aerodynamic tailgate spoiler and dynamic details such as black door mirrors and an exclusive design of alloy wheels.

The Jazz you know and love with a touch more brio.

**16" UNIQUE
ALLOY WHEELS**

**SPORT DRIVE MODE
FOR INCREASED ENJOYMENT**







Exterior



Models shown are the Honda Jazz 1.5 i-MMD Crosstar Advance in Fjord Mist Pearl and Advance Sport in Urban Grey Pearl. Left hand drive images are shown for illustration purposes only. In the UK, vehicle will be right hand drive.

Small dimensions, big impressions

Pairing charismatic design with practical living, the Jazz boasts a clean profile and **a striking silhouette** that's both aerodynamically efficient and effortlessly stylish.

With a refreshed design, every detail is there to give your Jazz a smart, contemporary look and a personality that simply stands out.

**CHOOSE FROM SEVEN
AVAILABLE BODY COLOURS***

**LED HEADLIGHTS
AS STANDARD**

* See pages 50-51 for exact colour and trim availability information.
Model shown is the Honda Jazz 1.5 i-MMD Advance Sport in Urban Grey Pearl.
Left hand drive images are shown for illustration purposes only. In the UK,
vehicle will be right hand drive.







The Jazz Crosstar Advance

Developed with active lifestyles in mind, the Crosstar is all about the outdoors: **a tough, muscular style** and a distinctive grille design add presence, and a raised ride height offers easier access and a commanding view of the road ahead.

Black mirror covers and striking silver finishes get you noticed, as do the sleek, integrated roof rails. And inside, intelligently designed upholstery and refined finishes make for a stylish drive.

**HEATED LEATHER
STEERING WHEEL**

**16" UNIQUE
BLACK ALLOY WHEELS**

Model shown is the Honda Jazz 1.5 i-MMD Crosstar Advance in Fjord Mist Pearl.
Left hand drive images are shown for illustration purposes only. In the UK,
vehicle will be right hand drive.



Interior



Model shown is the Honda Jazz 1.5 i-MMD Advance Sport in Urban Grey Pearl. Left hand drive images are shown for illustration purposes only. In the UK, vehicle will be right hand drive.

Feel good inside

Never tire in the front seats with **anti-fatigue properties** that provide limousine-class levels of comfort. Other thoughtful touches include a wide centre armrest and plenty of storage throughout.

Wherever you're going, look around you: ultra-thin but immensely strong A-pillars and hidden wipers offer an enhanced field of vision for a confidence-inspiring driving position, flooding the cabin with light and a sense of spaciousness that brings the outdoors in.

STAY CONNECTED
USB PORTS IN FRONT AND BACK*

CLIMATE CONTROL
AIR CONDITIONING

* Available on selected grades.

Model shown is the Honda Jazz 1.5 i-MMD Advance Sport in Urban Grey Pearl.

Left hand drive images are shown for illustration purposes only. In the UK, vehicle will be right hand drive.









Winning the **space** race

Whatever you fit into your life, fit it into the new Jazz with **ingenious rear Magic Seats** that give you the versatility you want right when you need it.

Fold flat and dive-down for extra load space, tip up to utilise the car's full height from floor to ceiling, or choose another combination: one easy motion gives you the flexibility to carry almost anything.

1,205 LITRES
CLASS-LEADING BOOT CAPACITY

ONE-MOTION MAGIC SEATS
A HELPING HAND

Model shown is the Honda Jazz 1.5 i-MMD Crosstar Advance in Fjord Mist Pearl.
Left hand drive images are shown for illustration purposes only. In the UK,
vehicle will be right hand drive.



Technology



Model shown is the Honda Jazz 1.5 i-MMD Crosstar Advance in Fjord Mist Pearl.



The world at **your** fingertips

The new Jazz seamlessly connects the dots with today's infotainment tech: DAB digital radio provides enough music for your own private festival, and the 9" touchscreen's **smartphone-style display** works with Android Auto and Apple CarPlay* in a way you'll find familiar.

For hands-free help, the voice-activated **Honda Personal Assistant**[†] is your portal to the outside world: check the weather, find your favourite station or choose a restaurant along your route – this is AI with a human touch.

GARMIN NAVIGATION SYSTEM
A FUSS-FREE WAY TO GET AHEAD**

BUILT-IN APPS
FOR EASE OF USE

* Apple CarPlay is a trademark of Apple Inc., registered in the U.S. and other countries.

** Available on selected grades. For more information on which grades this and other features are available on, please refer to the specification pages 58-61.

† Service fees apply, for more information check the Honda website.

Left hand drive images are shown for illustration purposes only. In the UK, vehicle will be right hand drive.

My Honda+ app

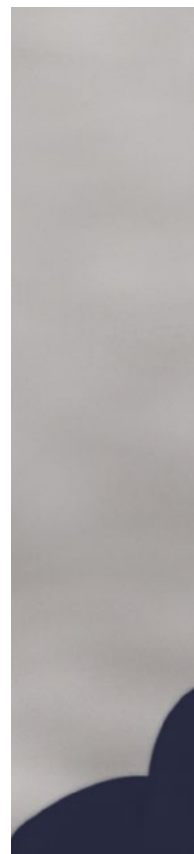
Begin your journey from the sofa with My Honda+, the app that seamlessly links your smartphone directly to your Jazz.

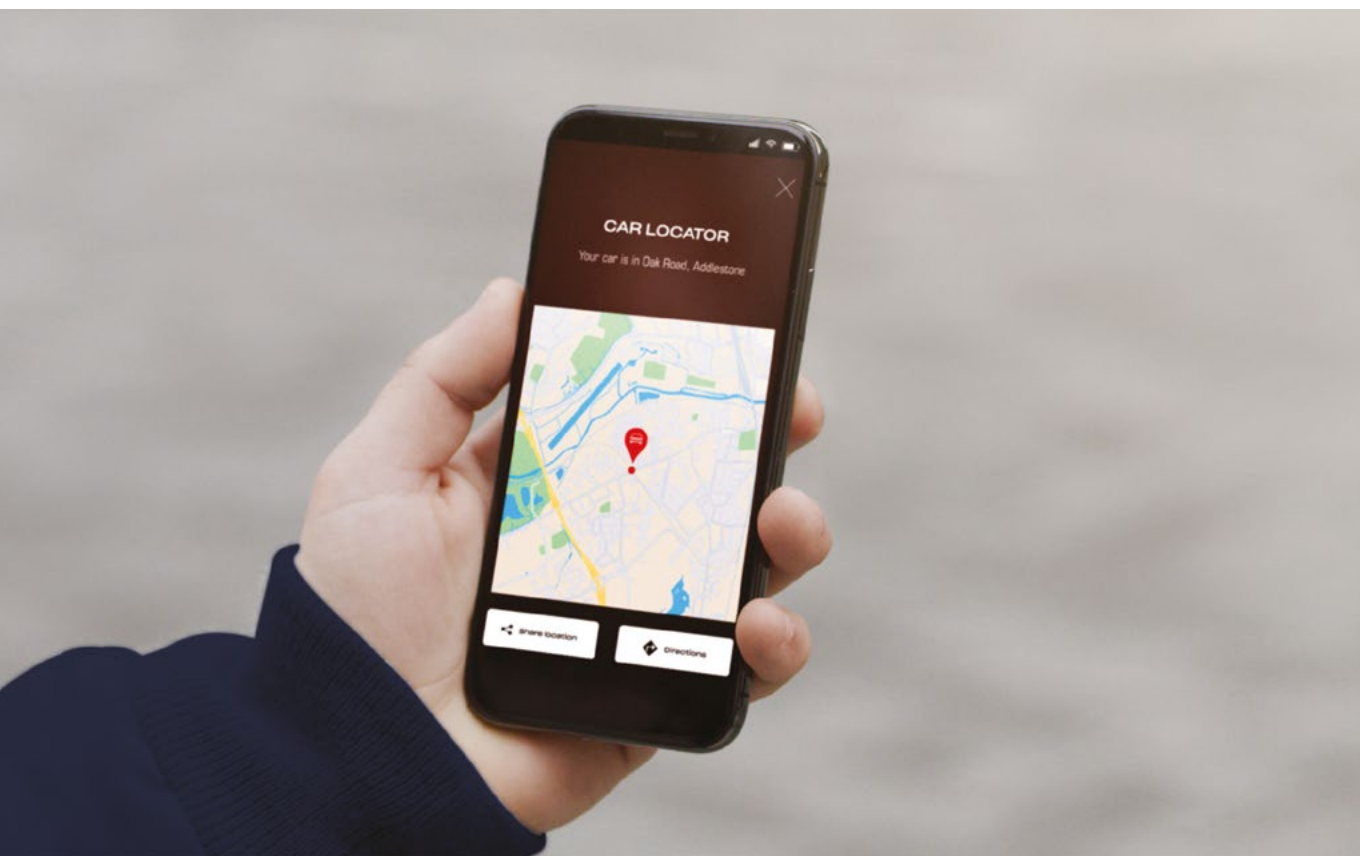
Get ready to ride and check your vital stats from the virtual dashboard, swap your key for your phone with **Honda Remote Lock-Unlock**, and pinpoint where you parked with the in-built car-locator feature.

GEOFENCE SECURITY SYSTEM
ALWAYS KNOW THE LOCATION
OF YOUR JAZZ

ROADSIDE ASSISTANCE
FOR PEACE OF MIND ON
LONG JOURNEYS

* Service fees apply, for more information check the Honda website.
Model shown is the Honda Jazz 1.5 i-MMD Crosstar Advance in Fjord Mist Pearl.
Left hand drive images are shown for illustration purposes only. In the UK,
vehicle will be right hand drive.







Safety



Models shown are the Honda Jazz 1.5 i-MMD Crosstar Advance in Fjord Mist Pearl and Advance Sport in Urban Grey Pearl. Left hand drive images are shown for illustration purposes only. In the UK, vehicle will be right hand drive.



Safety comes as standard

Honda SENSING technology reads road signs and driving conditions before you do, pre-empting any potential hazards with features like Blind Spot Information*, Cross Traffic Monitor*, Collision Mitigation Braking System and Intelligent Speed Limiter.

It's all because we want you and your passengers to enjoy the journey in comfort, safe in the knowledge you're prepared for whatever comes your way.

Wherever you're going, driving a Honda is driving with a sense of security.

* Available on selected grades.

Model shown is the Jazz Crosstar 1.5 i-MMD Advance in Fjord Mist Pearl.
Left hand drive images are shown for illustration purposes only. In the UK, vehicle will be right hand drive.

Honda SENSING innovation

Collision Mitigation Braking System

If there is a possibility of a collision with a vehicle or a pedestrian, the system will alert you whilst simultaneously reducing your speed, helping to minimise the severity of any impact. The system works even in the dark, with night-time operation to detect pedestrians or cyclists where there is no street lighting; it even applies the brakes if oncoming vehicles cut across or turn into your path.

Lane Departure Warning

If the car moves out of its lane without you activating the indicator, then alerts will flash and sound to help bring your attention to correcting the lane drift.

Traffic Sign Recognition System

Reminders of road-sign information such as the current speed limit.

Lane Keeping Assist System

Helps keep you in the middle of your lane, providing a less stressful driving experience by reducing the need for steering correction movements and driving effort on the motorway.

Intelligent Speed Limiter

Automatically sets the speed limit as detected by the Traffic Sign Recognition System.

Adaptive Cruise Control with Low Speed Following

Maintains a constant speed and a set following interval behind the vehicle in front, and can decelerate and stop automatically.

Auto High-Beam Headlights

Detects a vehicle in front, including oncoming vehicles and automatically switches between high beam and low beam.

Blind Spot Information*

Makes lane changes and overtaking safer, warning you when vehicles are detected in your blind spot by illuminating a light in your door mirror.

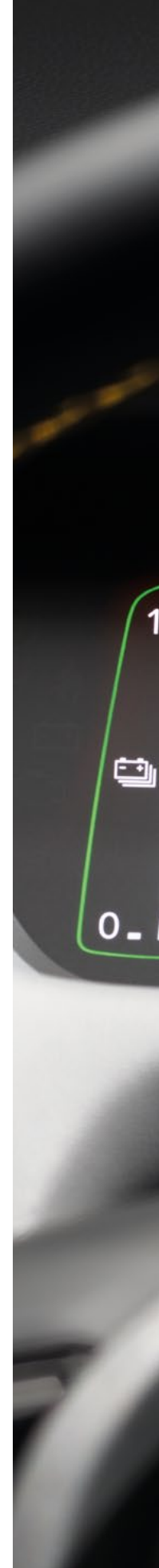
Cross Traffic Monitor*

When reversing, the Cross Traffic Monitor can detect approaching vehicles from either side and warns you of imminent danger.

* Available on selected grades.

For more information on which grades this and other features are available on, please refer to the specification pages 58-61.

Left hand drive images are shown for illustration purposes only. In the UK, vehicle will be right hand drive.







Your Jazz





Elegance

The Honda Jazz **Elegance** comes with a wide range of features, including:

- 15" Alloy Wheels
- Body Colour Mirrors
- Sport Grille
- Leather Steering Wheel
- Magic Seats
- Front and Rear Electric Windows
- Climate Control Air Conditioning
- 4 Speakers
- Steering Wheel Remote Audio Controls
- Multi Info Display
- Honda CONNECT with 9" Touchscreen, AM/FM/DAB Digital Radio, Apple CarPlay* and Android Auto™
- 2 Front USB Ports
- Rear View Camera
- Parking Sensors

**HONDA CONNECT
WITH 9" TOUCHSCREEN**

**ELECTRIC WINDOWS
FRONT AND REAR**



Advance

In addition to the features available on the Elegance, the **Advance** grade includes:

- 16" Alloy Wheels
- Advance Styling (Front and Rear Bumper Body Colour Decoration)
- Privacy Glass
- Leather Shift Knob
- Heated Steering Wheel
- Heated Front Seats
- Honda CONNECT with GARMIN Navigation, 9" Touchscreen, AM/FM/DAB Digital Radio, Apple CarPlay* and Android Auto™
- Mirror and Window Key Fob Operation
- Automatic Up/Down Windows
- 2 Front USB Ports
- 2 Rear USB Ports

**FRONT AND REAR
USB PORTS**

**HEATED LEATHER
STEERING WHEEL**



Advance Sport

In addition to the features available on the Advance, the **Advance Sport** grade includes:

- Regenerative Braking and Deceleration Control Paddle
- Multiple Drive Modes (Econ, Sport and Normal)
- Sports Pedals
- 16" Unique Alloy Wheels
- Advance Sport Styling (Front and Rear Bumper Gloss Black Finish)
- Black Door Mirrors
- Tailpipe with Finisher
- Spoiler
- Leather 3-Spoke Steering Wheel

SPORT DRIVE MODE
FOR INCREASED ENJOYMENT

16" UNIQUE
ALLOY WHEELS



Crosstar Advance

The **Crosstar Advance** grade also includes:

- Water-Repellent Fabric Upholstery
- 16" Unique Alloy Wheels
- Black Door Mirrors and Handles
- Crosstar Styling (Front and Rear Bumper, Front Fog Light Garnish, Silver Fender and Side Sill Garnish)
- Roof Rails
- LED Front Fog Lights

**WATER-REPELLENT
FABRIC UPHOLSTERY**

**LEATHER
GEAR SHIFT**

Jazz colours

We have created a wide range of colours that perfectly suit the stylish new Jazz, which are complemented by our selection of high-quality upholsteries.



Urban Grey Pearl



Midnight Blue Beam Metallic



Platinum White Pearl



Premium Crystal Red Metallic



Crystal Black Pearl



Fjord Mist Pearl



Premium Sunlight White Pearl

	Fjord Mist Pearl	Platinum White Pearl	Urban Grey Pearl	Premium Crystal Red Metallic	Midnight Blue Beam Metallic	Crystal Black Pearl	Premium Sunlight White Pearl
Elegance				●	●	●	●
Advance				●	●	●	●
Advance Sport		●	●	●		●	
Crosstar Advance	●			●		●	●



Jazz Advance Sport Upholstery

*Synthetic Leather

Interior upholstery

	Two-tone Fabric	Fabric & Leather*	Fabric, Suede & Leather*	Water-Repellent Fabric & Leather*
Elegance	●			
Advance		●		
Advance Sport			●	
Crosstar Advance				●



Our Packs

Honda **genuine accessories** have been designed and built to the same exacting standards as every Honda. All you need to do is choose the options that are right for you.

Sports Pack



The Sports Pack adds a striking dash of colour to your Jazz, with exterior and interior Active Yellow touches that will get you noticed in this ultimate sporty small car. This pack is a combination of a front bumper inlay, side body trims with accent colour inserts, a tailgate spoiler, cup holder decorations and a set of matching elegance floor mats.



SIDE BODY TRIMS

Avoid scratches and dents in your car's bodywork with these side body trims. Made out of soft, impact-resistant material the side body trims feature striking Active Yellow inserts and provide all-round protection for your car.



TAILGATE SPOILER DECORATION

If a distinguished sporty look is what you want, this Honda genuine spoiler decoration is exactly what you need. The tailgate spoiler decoration is specifically developed to complement the standard tailgate spoiler and emphasise the sporty appearance of your Jazz Advance Sport grade.



FRONT BUMPER INLAY

The front bumper inlay adds a sporty and dynamic touch to the lower front of your car.



CUP HOLDER DECORATIONS

Active Yellow – Enhance the sporty look of your Jazz's interior with the cup holder decoration which has a striking yellow finish.



ELEGANCE FLOOR MATS

These elegant fitted tufted mats have a yellow double stitched nubuck binding for durability and a woven Jazz emblem. One set includes front and rear mat.

Additional individual accessories

1. 15" JA1502 Alloy Wheel

The 15" JA1502 wheel design comes in full Gunpowder Black with a shiny clear coat.

2. The 15" JA1505 Alloy Wheel

The 15" JA1505 wheel design features a diamond-cut A-surface with a shiny clear coat and Gunpowder Black windows.

3. 16" JA1601 Alloy Wheel

The 16" JA1601 wheel design has a diamond-cut A-surface and a shiny clear coat.

4. 16" JA1602 Alloy Wheel

The JA1602 wheel design comes in full Gunpowder Black and Gunpowder Black windows.



1. Detachable Tow Bar

With this detachable tow bar, you can pull your trailer or carry bikes with no worries at all.

- Maximum towing capacity: 500kg
- Maximum vertical load: 50kg
- Includes a 13-pin trailer harness

A dedicated tow bar is also available for the Jazz Crosstar.

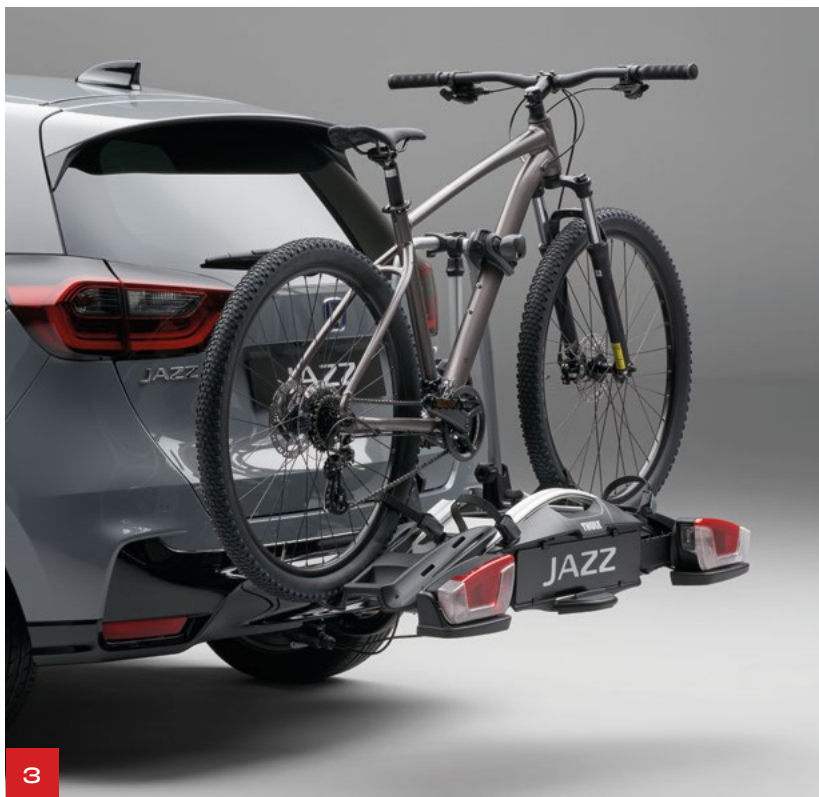
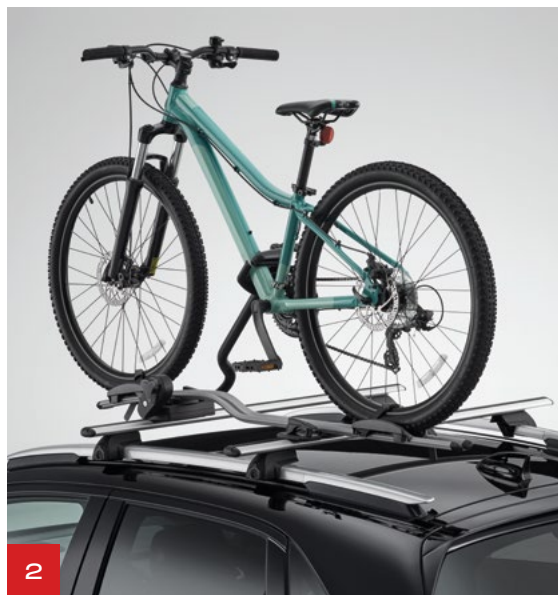
2. Thule Roof Bicycle Rack – Expert 298

This universal, easy-to-install, bike carrier is designed for easy loading and unloading of your bike. It is lockable to prevent your bike from theft.

- Maximum bicycle load: 20kg.

3. Thule Bicycle Carrier – Coach

This bicycle carrier, which is Thule certified by Honda, carries two bicycles and is easy to install. It has a tilting function for easy boot access and an anti-theft locking system. It comes with a 13-pin connector and requires a 13-pin wiring harness.



	Elegance 1.5 i-MMD Hybrid Automatic	Advance 1.5 i-MMD Hybrid Automatic	Advance Sport 1.5 i-MMD Hybrid Automatic	Crosstar Advance 1.5 i-MMD Hybrid Automatic
Engine				
Displacement (cc)	1498	1498	1498	1498
Valve Train	Chain Driven DOHC	Chain Driven DOHC	Chain Driven DOHC	Chain Driven DOHC
Emission Standard	EURO 6D	EURO 6D	EURO 6D	EURO 6D
Fuel Required	UNLEADED(95)	UNLEADED(95)	UNLEADED(95)	UNLEADED(95)
Performance				
Engine Maximum Power (kW@rpm)	79 @ 6000-6400	79 @ 6000-6400	79 @ 6000-6400	79 @ 6000-6400
Engine Maximum Power (PS@rpm)	107 @ 6000-6400	107 @ 6000-6400	107 @ 6000-6400	107 @ 6000-6400
Engine Maximum Torque (Nm@rpm)	131 @ 4500-5000	131 @ 4500-5000	131 @ 4500-5000	131 @ 4500-5000
Electric Motor Max. Power (kW [PS])	90 [122]	90 [122]	90 [122]	90 [122]
Electric Motor Max. Torque (Nm)	253	253	253	253
0 → 60mph (seconds)	9.4	9.6	9.6	9.7
Maximum Speed (mph)	108	108	108	108
Sound Level Drive-by dB(A)	65	65	65	65
Fuel Economy & Emissions - Worldwide Harmonised Light Vehicle Test Procedure (WLTP)*				
Low – FC mpg	78.5	74.3	70.6	72.4
Medium – FC mpg	76.3	74.3	76.3	72.4
High – FC mpg	72.4	70.6	70.6	68.9
Extra High – FC mpg	48.7	47.9	47.1	45.6
Combined – FC mpg	62.8	61.4	61.4	58.9
Combined CO2 g/km	102	104	106	108
Range CO2 g/km	82-132	85-133	85-136	88-140
Dimensions				
Overall Length (mm)	4089	4089	4089	4105
Overall Width (mm)	1694	1694	1694	1725
Overall Width including Door Mirror (mm)	1966	1966	1966	1966
Overall Height – Unladen (mm)	1526	1526	1526	1556
Wheelbase (mm)	2517	2517	2517	2520
Track Front (mm)	1487	1487	1487	1487
Track Rear (mm)	1474	1474	1474	1485
Ground Clearance – Non Load (mm)	136	136	136	146
Ground Clearance – Full Load (mm)	106.7	106.7	105.2	120.4
Turning Circle – at Body (m)	10.1	10.7	10.7	10.1
Turning Radius – at Wheel Centre (m)	4.9	5.2	5.2	5.0
Steering Wheel Lock to Lock (Wheel Turns)	2.35	2.35	2.35	2.63
Capacity (Litres, VDA Method)				
Boot Capacity – Rear Seat Up	304	304	304	304
Boot Capacity – Rear Seat Down Load to Window	844	844	844	844
Boot Capacity – Rear Seat Down Load to Roof	1205	1205	1205	1205
Max. Seating Capacity (Persons)	5	5	5	5
Fuel Tank (Litres)	40	40	40	40
Weight				
Kerb Weight (kg)	1230-1247	1230-1247	1242-1244	1248-1253
Max. Permissible Weight (kg)	1690	1690	1690	1690
Max. Permissible Axle Weight – Front/Rear (kg)	946/805	946/805	946/805	946/805
Max. Roof Load (kg)	35	35	35	50
Max. Towing Weight (kg) – Braked	500	500	500	500

	Elegance 1.5 i-MMD Hybrid Automatic	Advance 1.5 i-MMD Hybrid Automatic	Advance Sport 1.5 i-MMD Hybrid Automatic	Crosstar Advance 1.5 i-MMD Hybrid Automatic
Safety				
Driver SRS Airbag	◆	◆	◆	◆
Passenger SRS Airbag with Cut-Off Switch	◆	◆	◆	◆
Side Airbags (Front)	◆	◆	◆	◆
Side Curtain Airbags (Front and Rear)	◆	◆	◆	◆
Front Centre Airbag	◆	◆	◆	◆
Front Driver's Seat Knee Airbag	◆	◆	◆	◆
Passenger Seat Knee Airbag	◆	◆	◆	◆
eCall (Europe)	◆	◆	◆	◆
Front and Rear Seatbelts with Emergency Locking Retractor	◆	◆	◆	◆
ABS (Anti-Lock Braking System)	◆	◆	◆	◆
Brake Assist	◆	◆	◆	◆
Vehicle Stability Assist	◆	◆	◆	◆
ISOFix Points (Outer Rear Seats)	◆	◆	◆	◆
Emergency Stop Signal	◆	◆	◆	◆
Deflation Warning System	◆	◆	◆	◆
Collision Mitigation Braking System	◆	◆	◆	◆
Forward Collision Warning	◆	◆	◆	◆
Lane Keeping Assist System	◆	◆	◆	◆
Lane Departure Warning	◆	◆	◆	◆
Road Departure Mitigation	◆	◆	◆	◆
Adjustable Speed Limiter	◆	◆	◆	◆
Intelligent Speed Limiter	◆	◆	◆	◆
Traffic Jam Assistant	◆	◆	◆	◆
Traffic Sign Recognition System	◆	◆	◆	◆
Low Speed Following	◆	◆	◆	◆
Blind Spot Information incl. Cross Traffic Monitor	–	◆	◆	–
Security				
Immobiliser System	◆	◆	◆	◆
Security Alarm System	◆	◆	◆	◆
Remote Central Locking with Two Key Fobs	◆	◆	◆	◆
Smart Entry and Start	–	◆	◆	◆
Parcel Shelf	◆	◆	◆	◆
Interior Trim				
Fabric/Leather* Interior	◆	◆	–	–
Suede/Fabric/Leather* Interior	–	–	◆	–
Water-Repellent Fabric/Leather* Interior	–	–	–	◆
Interior Panels – Soft Pad Leather*	◆	◆	◆	◆
Leather Steering Wheel	–	◆	–	◆
Leather 3-Spoke Steering Wheel	–	–	◆	–
Leather Shift Knob	◆	◆	◆	◆
Sport Pedals	–	–	◆	–

◆ Standard – Not available

* Synthetic Leather

† Fuel consumption figures, sourced from EU regulated laboratory test results, are provided for comparison purposes and may not reflect real-life driving experience. The Honda Jazz has been subjected to the WLTP CO2 and fuel consumption testing cycle in accordance with Commission Regulation (EU) 2017/1151. WLTP figures better reflect the actual performance of the vehicle when driven on the road. During the transition phase between NEDC (the former testing regime) and WLTP, NEDC values for CO2 and fuel consumption will remain available in accordance with Commission Regulation (EU) 2017/1153.

	Elegance 1.5 i-MMD Hybrid Automatic	Advance 1.5 i-MMD Hybrid Automatic	Advance Sport 1.5 i-MMD Hybrid Automatic	Crosstar Advance 1.5 i-MMD Hybrid Automatic
Function & Technology				
Econ Mode	◆	◆	◆	◆
Econ/Sport/Normal Drive Mode	–	–	◆	–
Agile Handle Assist	◆	◆	◆	◆
Hill Start Assist	◆	◆	◆	◆
Electric Power Steering with Variable Gear Ratio	◆	◆	◆	◆
Electronic Parking Brake with Automatic Brake Hold	◆	◆	◆	◆
Regenerative Braking/Deceleration Control Paddle	–	–	◆	–
Idle Stop	◆	◆	◆	◆
Multi Information Display	◆	◆	◆	◆
Comfort & Convenience				
Adaptive Cruise Control	◆	◆	◆	◆
Climate Control Air Conditioning	◆	◆	◆	◆
Auto Wipers	◆	◆	◆	◆
Cargo Net Hook	◆	◆	◆	◆
Rear Parking Camera	◆	◆	◆	◆
Parking Sensors (Front and Rear)	◆	◆	◆	◆
Auto Up/Down Windows	–	◆	◆	◆
Auto Up/Down Windows – Driver's Only	◆	–	–	–
Remote Electric Windows (Key Fob Operation)	–	◆	◆	◆
Tilt and Telescopic Steering Wheel	◆	◆	◆	◆
Door Mirrors – Electric Adjustable and Heated	◆	◆	◆	◆
Door Mirrors – Electrically Retractable	◆	◆	◆	◆
Door Mirrors – Remote Retractable (Key Fob Operation)	–	◆	◆	◆
Sunvisor Vanity Mirrors	◆	◆	◆	◆
Accessory Socket (Front)	◆	◆	◆	◆
Driver Seat Manual Height Adjust	◆	◆	◆	◆
Driver and Front Passenger Seat Armrest	◆	◆	◆	◆
Front Seat Back Pockets	◆	◆	◆	◆
Heated Steering Wheel	–	◆	◆	◆
Heated Front Seats	–	◆	◆	◆
Magic Seats	◆	◆	◆	◆
Interior Lights				
Map Light (Front)	◆	◆	◆	◆
Courtesy Light	◆	◆	◆	◆
Sunvisor Vanity Mirror Illumination	◆	◆	◆	◆
Boot Light	◆	◆	◆	◆
Audio & Communications				
Honda CONNECT (9" Touchscreen, AM/FM/DAB Digital, Apple CarPlay/Android Auto™)	◆	–	–	–
Honda CONNECT with GARMIN Navigation (9" Touchscreen, AM/FM/DAB Digital, Apple CarPlay/Android Auto™)	–	◆	◆	◆
2 Front USB Ports	◆	◆	◆	◆
2 Rear USB Ports	–	◆	◆	◆
4 Speakers	◆	◆	◆	◆
Steering Wheel Remote Audio Controls	◆	◆	◆	◆
Bluetooth™ Hands Free Telephone (HFT)	◆	◆	◆	◆
Wireless Apple CarPlay	◆	◆	◆	◆

	Elegance 1.5 i-MMD Hybrid Automatic	Advance 1.5 i-MMD Hybrid Automatic	Advance Sport 1.5 i-MMD Hybrid Automatic	Crosstar Advance 1.5 i-MMD Hybrid Automatic
Exterior				
Shark Fin Antenna	◆	◆	◆	◆
Body Colour Door Handle	◆	◆	◆	–
Black Coloured Door Handle	–	–	–	◆
Body Coloured Door Mirrors	◆	◆	◆	–
Black Coloured Door Mirrors	–	–	◆	◆
Sport Grille	◆	◆	◆	–
Advance Styling (Front and Rear Bumper Body Colour Styling Decoration)	–	◆	–	–
Advance Sport Styling (Front and Rear Bumper Gloss Black Finish)	–	–	◆	–
Crosstar Styling (Front and Rear Bumper/Front Fog Garnish/Silver Fender and Side Sill Garnish)	–	–	–	◆
Spoiler	–	–	◆	–
Roof Rails	–	–	–	◆
Privacy Glass	–	◆	◆	◆
e:HEV Emblem	◆	◆	◆	◆
Exterior Lights				
LED Headlights	◆	◆	◆	◆
Auto Headlights	◆	◆	◆	◆
Manual Auto Headlight Adjuster	◆	◆	◆	◆
Headlight Auto On/Off Timer (Coming/Leaving Home Function)	◆	◆	◆	◆
Highbeam Support System	◆	◆	◆	◆
Dusk Sensing Auto Lights	◆	◆	◆	◆
LED Front Fog Lights	–	–	–	◆
LED Daytime Running Lights	◆	◆	◆	◆
LED Rear Lights	◆	◆	◆	◆
Wheels				
15" Multi Appearance Wheels	◆	–	–	–
16" Multi Appearance Wheels	–	◆	–	–
16" Unique Alloy	–	–	◆	–
16" Centre Cap (3D Chrome H) Colour Change	–	–	–	◆
Tyres 185/60 R15 88H	◆	–	–	–
Tyres 185/55 R16 87H	–	◆	◆	–
Tyres 185/60 R16 86H	–	–	–	◆
Tyre Repair Kit	◆	◆	◆	◆

◆ Standard – Not available

† Fuel consumption figures, sourced from EU regulated laboratory test results, are provided for comparison purposes and may not reflect real-life driving experience. The Honda Jazz has been subjected to the new WLTP CO2 and fuel consumption testing cycle in accordance with Commission Regulation (EU) 2017/1151. WLTP figures better reflect the actual performance of the vehicle when driven on the road. During the transition phase between NEDC (the former testing regime) and WLTP, NEDC values for CO2 and fuel consumption will remain available in accordance with Commission Regulation (EU) 2017/1153.



Model shown is the Honda Jazz 1.5 i-MMD Advance in Premium Crystal Red Metallic. Left hand drive images are shown for illustration purposes only. In the UK, vehicle will be right hand drive.





BLUE SKIES FOR
OUR CHILDREN

Extend the Honda Jazz experience at honda.co.uk/jazz

These specification details do not apply to any particular product which is supplied or offered for sale. The manufacturers reserve the right to vary their specifications, including colours, with or without notice and at such times in such manner as they think fit. Major as well as minor changes may be involved. Every effort, however, is made to ensure the accuracy of the particulars contained in this brochure. This publication shall not constitute in any circumstances whatsoever an offer by the Company to any person. All sales are made by the Distributor or Dealer concerned subject to and with the benefit of the standard Conditions of Sale and Warranty given by the Distributor or Dealer, copies of which may be obtained from them on request. This publicity material applies to the UK only Trade Descriptions Act (1968). Whilst efforts are made to ensure specification accuracy, brochures are prepared and printed several months in advance of distribution and consequently cannot always immediately reflect either changes in specification or in some isolated cases the provision of a particular feature. Customers are always advised to discuss specification details with the supplying Dealer especially if your model selection is dependent upon one of the features advertised.

Honda (UK) – Cars Cain Road, Bracknell, Berkshire, RG12 1HL. Honda Contact Centre – Telephone: 0845 200 8000 www.honda.co.uk
A division of Honda Motor Europe Ltd. No. 857969 Registered in England and Wales Part No: CAR-HR-V e:HEV EIL 0721 Issue Date: 07/21.



Honda sources paper responsibly from manufacturers within the EU.
Please don't bin me, pass me onto a friend or recycle me.

HONDA