

MAZDA2 HYBRID



PRICE AND SPECIFICATION GUIDE



WELCOME...

Own your city, from the narrowest of streets to the smallest of parking spots, with the compact and agile Mazda2 Hybrid. Its full hybrid system features a petrol engine and an electric motor that work simultaneously. This impressive powertrain reduces your fuel consumption and emissions, while maximising the driving experience.

High levels of standard specification include Dynamic Radar Cruise Control, climate control air-conditioning, as well as driver aids including Automatic High Beam, Lane Tracing Assist (LTA) and a Pre-Collision System enhanced with emergency steering assist to help keep you and your passengers safe.

And when it comes to safety, you're in good hands. The Mazda2 Hybrid has been awarded the maximum five-star rating by Euro NCAP, performing impressively in all four Euro NCAP test categories - Adult Occupant, Child Occupant, Vulnerable Road User (pedestrian safety) and Safety Assist.





This Price & Specification Guide has been designed to enable you to discover more about the Mazda2 Hybrid as well about its key features, what they do, as well as key technical information making it easy to find the information you need.

So what are you waiting for...



THE LATEST IN TECHNOLOGY & CONVENIENCE

SELF-CHARGING HYBRID

At start-up and at low speeds, the Mazda2 Hybrid has the ability to drive in EV mode*, offering smooth and quiet running in urban environments, with zero emissions.

During normal driving, power is sourced between the petrol engine and electric motor for optimum performance and the best possible fuel efficiency. During deceleration and braking, kinetic energy is recovered as electrical energy and stored in the high-performance lithium-ion battery.



THE LATEST IN-CAR INFOTAINMENT

The in-car infotainment system allows for seamless connectivity between you and your Mazda. Information is displayed on a beautiful & clear central screen which is perfectly positioned at eye level.

Access vehicle information, settings and entertainment options including DAB Radio. Connect your smartphone via Bluetooth to make and receive calls and access your phonebook.

You can also connect your smartphone via wireless Apple CarPlay® or Android Auto™ which allow you to access your favourite music, messaging apps and navigation to get directions.

*Use of self-charging hybrid system depends on state of charge of battery at the time of use. Please consult your dealer, or refer to the owners manual for further information.

THE FLEXIBILITY TO FIT INTO YOUR LIFE

ACCOMMODATING CARGO SPACE TO FIT YOUR NEEDS

Whether it be for a weekly shop, taking the kids and their equipment to sports practice, or even for a weekend getaway. With flexible luggage capacity, the Mazda2 Hybrid can adapt to your lifestyle.

Practicality is further enhanced with a 60:40 split rear seat to accommodate those larger items.



MAZDA2 HYBRID PRICING

1.5 Hybrid Petrol

	PRICE	VAT	P11D VALUE	FIRST YEAR VED & DVLA FIRST REG FEE*	RECOMMENDED 'ON THE ROAD' RETAIL	CO ₂ EMISSIONS (G/KM)~	BIK TAX (%)^	2024/25 MONTHLY TAX LIABILITY 20%/40%	INSURANCE GROUP
Mazda2 Hybrid Centre-Line	£19,962.50	£3,992.50	£23,955	£180	£24,135	87	22%	£88/£176	14E
Mazda2 Hybrid Exclusive-Line	£20,975.00	£4,195.00	£25,170	£220	£25,390	92	23%	£96/£193	14E
Mazda2 Hybrid Homura	£22,558.33	£4,511.67	£27,070	£220	£27,290	97	24%	£108/£217	14E
Mazda2 Hybrid Homura Plus	£24,183.33	£4,836.67	£29,020	£220	£29,240	98	24%	£116/£232	15E

~Figures shown are for comparability purposes and may reflect Euro 6d or Euro 6e testing procedures. Please speak to your Mazda dealer for confirmation; only compare fuel consumption and CO₂ figures with other cars tested to the same technical procedures. These figures may not reflect real life driving results, which will depend upon a number of factors including the accessories fitted (post-registration), variations in weather, driving styles and vehicle load. All figures quoted are derived from the latest WLTP test cycle.

*First year rate Vehicle Excise Duty as of 1 April 2024, includes £55 DVLA first registration fee. ^BIK effective from 6 April 2024. Pricing and specification subject to change prior to launch. Pricing and specification are subject to change. Please speak with your local dealer for latest pricing information.

MAZDA2 HYBRID GRADE HIGHLIGHTS

CENTRE-LINE FROM £24,135

STANDARD FEATURES:

EXTERIOR

- 15" alloy wheels
- Gloss Black electrically-adjustable, heated door mirrors
- Rear body coloured bumper with satin black lower moulding
- Halogen headlights with manual headlight levelling
- Automatic High Beam
- Coming home lights
- Dusk-sensing headlights
- LED daytime running lights
- LED rear combination lights with halogen indicators
- Rear roof spoiler - Gloss Black
- Reversing camera
- Rain-sensing front wipers

INTERIOR

- Analogue speedometer and hybrid system indicator
- Black fabric seat trim
- Driver's seat, manual slide, recline and height adjustment
- Electronic Parking Brake with auto-hold and auto-disengage function
- Leather-wrapped steering wheel and gear shift

INFOTAINMENT

- DAB radio, with 6 speakers and USB-C input
- Wireless Apple CarPlay® & Android Auto™
- Integrated Bluetooth®
- 9" Colour screen centre display

COMFORT AND CONVENIENCE

- Adjustable Speed Limiter
- Climate-controlled air conditioning
- Driving mode select switch (Normal, Power and ECO modes)
- Dynamic Radar Cruise Control
- Electric windows
- EV drive mode

SAFETY AND SECURITY

- Driver Attention Alert
- e-Call with GPS
- Hill-start assist control
- Lane Tracing Assist
- Pre-Collision System – Front enhanced with emergency steering assist
- Remote central locking with deadlocking
- Road Sign Assist

EXCLUSIVE-LINE FROM £25,390

IN ADDITION TO CENTRE-LINE, EXCLUSIVE-LINE ADDS:

EXTERIOR

- 16" alloy wheels
- Auto power-folding door mirrors
- Front and rear parking sensors

COMFORT AND CONVENIENCE

- Push button start / stop

SAFETY AND SECURITY

- Blind Spot Monitor (BSM) with parking support brake function (rear-crossing)
- Smart keyless entry



Model shown: Mazda2 Hybrid Centre-Line in Stormy Silver



Model shown: Mazda2 Hybrid Exclusive-Line in Formal Red

Pricing and specification are subject to change. Please speak with your local dealer for latest pricing information.

MAZDA2 HYBRID GRADE HIGHLIGHTS

HOMURA FROM £27,290

IN ADDITION TO EXCLUSIVE-LINE, HOMURA ADDS:

EXTERIOR

- 17" alloy wheels
- Rear body coloured bumper with gloss black lower moulding
- LED headlights with manual headlight levelling
- LED daytime running light guide
- LED front fog lights
- Welcome lights
- LED rear combination lights with LED indicators
- Privacy glass

INTERIOR

- 7" Digital customisable speedometer and hybrid system indicator
- Auto-dimming rear-view mirror
- Black fabric with synthetic leather seat trim
- Front sport seats with driver and front passenger's seat, manual slide, recline and height adjustment
- Black roof lining

INFOTAINMENT

- Qi Wireless charging

COMFORT AND CONVENIENCE

- Dual zone climate-controlled air-conditioning
- Ambient lighting

SAFETY AND SECURITY

- Rear Parking Support Brake function (static objects)
- Rear Cross Traffic Alert (Auto Braking)



Model shown: Mazda2 Hybrid Homura
in Glass Blue

HOMURA PLUS FROM £29,240

IN ADDITION TO HOMURA, HOMURA PLUS ADDS:

EXTERIOR

- Panoramic glass roof

INTERIOR

- 12.3" Digital customisable speedometer and hybrid system indicator

INFOTAINMENT

- 6 speaker audio system with 10.5" Colour screen centre display
- Satellite Navigation System
- Voice recognition

COMFORT AND CONVENIENCE

- Windscreen projected head-up display



Model shown: Mazda2 Hybrid Homura Plus
in Northern White Pearl

Pricing and specification are subject to change. Please speak with your local dealer for latest pricing information.

MAZDA2 HYBRID INTERIOR TRIMS



Centre-Line



Exclusive-Line



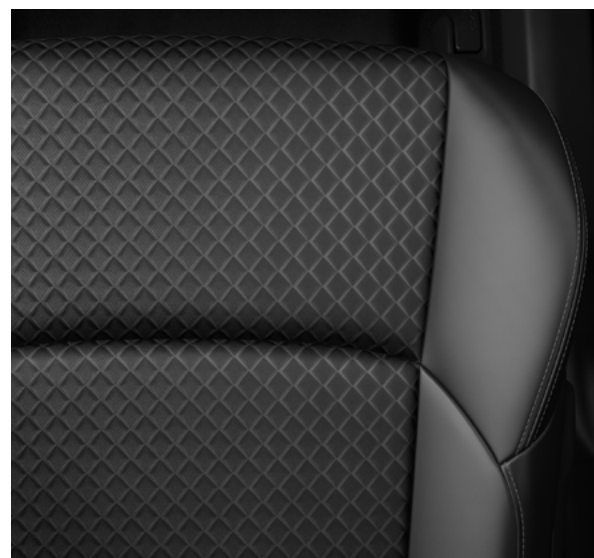
Black Fabric Seat Trim
(standard on Centre-Line and Exclusive-Line)



Homura



Homura Plus



Front sports seats trimmed in Black Fabric
with Synthetic Leather Seat Trim
(standard on Homura and Homura Plus)

MAZDA2 HYBRID PAINT FINISH OPTIONS



LUNA WHITE



STORMY SILVER



LEAD GREY



GLASS BLUE



OPERA BLACK



NORTHERN WHITE PEARL



FORMAL RED

Exterior Colours

	BASIC PRICE	VAT	MSRP
Luna White	£0.00	£0.00	£0
Stormy Silver	£487.50	£97.50	£585
Lead Grey	£487.50	£97.50	£585
Glass Blue	£487.50	£97.50	£585
Opera Black	£487.50	£97.50	£585
Northern White Pearl	£733.33	£146.67	£880
Formal Red	£733.33	£146.67	£880

Mazda Motors UK reserves the right to introduce changes in pricing, specification and equipment due to its ongoing product development. Colour and trim samples shown in this digital brochure may vary from the actual colours because of the variations of resolutions and colours found in various screen displays, and if printed, limitations within the printing process. Models shown may not be to UK specification. It is recommended that you consult your Mazda dealer when referring to these.

MAZDA2 HYBRID ALLOY WHEELS



15" ALLOY WHEELS
Standard on Centre-Line



16" ALLOY WHEELS
Standard on Exclusive-Line



17" BLACK ALLOY WHEELS
Standard on Homura and Homura Plus

Options & Accessories: A small selection of our range of accessories are shown within this Price and Specification guide, and are subject to change. For more information on the entire range of accessories we retail, please visit www.mazda.co.uk/configurator, select your vehicle and visit the 'Options & Accessories' section. The price shown is a non-binding recommendation of Mazda Motors UK, is subject to change and may not include extras. Alloy wheel prices do not include tyres. Accessory fitment costs may differ between Mazda dealers. For further information about Mazda Genuine Accessories and latest pricing including any fitment cost differences please contact your local Mazda dealer.

MAZDA2 HYBRID SPECIFICATIONS

Exterior

		CENTRE-LINE	EXCLUSIVE-LINE	HOMURA	HOMURA PLUS
Bumpers:	Front body coloured	•	•	•	•
	Rear body coloured with satin black lower moulding	•	•	-	-
	Rear body coloured with gloss black lower moulding	-	-	•	•
Door mirrors:	Gloss black electrically-adjustable, heated door mirrors	•	-	-	-
	Gloss black electrically-adjustable, heated, auto power-folding door mirrors	-	•	•	•
Front fog lights:	LED	-	-	•	•
Front Grille:	Gloss black finish	•	•	•	•
Headlights:	Automatic High Beam	•	•	•	•
	Coming home lights	•	•	•	•
	Welcome lights	-	-	•	•
	Dusk sensing	•	•	•	•
	Halogen with manual headlight levelling	•	•	-	-
	LED daytime running lights	•	•	-	-
	LED with manual headlight levelling	-	-	•	•
Lower window garnish:	LED daytime running light guide	-	-	•	•
	Black	•	•	-	-
	Piano Black	-	-	•	•
Parking sensors:	Front & Rear	-	•	•	•
Parking aids:	Reversing camera	•	•	•	•
Privacy glass:	Rear side and rear windows	-	-	•	•
Panoramic glass roof		-	-	-	•
Rear lights:	LED rear combination light with Halogen turn signals	•	•	-	-
	LED rear combination light with LED turn signals	-	-	•	•
Rear roof spoiler:	Gloss black	•	•	•	•
Shark-fin antenna		•	•	•	•
Wheels & tyres:	15" alloy wheels with 185/65 R15 tyres	•	-	-	-
	16" alloy wheels with 195/55 R16 tyres	-	•	-	-
	17" alloy wheels with 205/45 R17 tyres	-	-	•	•
Wipers:	Front, rain-sensing with adjustable sensitivity and speed	•	•	•	•
	Rear	•	•	•	•

• = Standard equipment; - = Not available.

Interior

		CENTRE-LINE	EXCLUSIVE-LINE	HOMURA	HOMURA PLUS
12v electrical power outlet		•	•	•	•
Electronic Parking Brake with auto-hold and auto-disengage function		•	•	•	•
Gear shift:	Leather-wrapped	•	•	•	•
Grab handles:	Driver, front passenger and two rear, with coat hooks	•	•	•	•
Instrument cluster:	Analogue speedometer and hybrid system indicator	•	•	-	-
	7" Digital customisable speedometer and and hybrid system indicator	-	-	•	-
	12.3" Digital customisable speedometer and and hybrid system indicator	-	-	-	•
	Trip computer	•	•	•	•
Interior mirror:	Auto-dimming rear-view mirror	-	-	•	•
Interior trim:	Black fabric seat trim	•	•	-	-
	Black fabric with synthetic leather seat trim	-	-	•	•
Roof Lining (Ceiling and Pillars):	Grey	•	•	-	-
	Black	-	-	•	•
Seats (Front):	Driver's seat, manual slide, recline and height adjustment	•	•	-	-
	Driver's and passenger's seat, manual slide, recline and height adjustment	-	-	•	•
	Front Sports style seats	-	-	•	•
Seats (Rear):	3 x height-adjustable head restraints	•	•	•	•
	60:40 split fold down rear seat	•	•	•	•
Steering wheel:	Leather-wrapped	•	•	•	•
	Telescopic and tilt adjustment	•	•	•	•
Storage spaces:	Door storage (driver, front passenger and two rear)	•	•	•	•
	Glovebox	•	•	•	•
	Seatback pocket (located on rear of front passenger seat)	-	-	•	•
	Front centre armrest with console storage	•	•	•	•

• = Standard equipment; - = Not available.

Infotainment

		CENTRE-LINE	EXCLUSIVE-LINE	HOMURA	HOMURA PLUS
Audio System:	6 speaker audio system with 9" Colour screen centre display where you can choose your favourite DAB radio channel, customise system functions, check vehicle data and connect your smart phone to stream music.	•	•	•	-
	6 speaker audio system with 10.5" Colour screen centre display where you can choose your favourite DAB radio channel, customise system functions, check vehicle data and connect your smart phone to stream music.	-	-	-	•
	Steering wheel-mounted audio and Bluetooth® controls	•	•	•	•
	USB type-C input	•	•	•	•
Integrated Bluetooth®:	Allows audio transfer from Bluetooth® devices, hands-free calling and easy access to phone contacts via steering wheel controls	•	•	•	•
Navigation System:	European mapping with 7-years free map updates	-	-	-	•
Voice Recognition:	Voice recognition is designed to give you easy access to the things you want while allowing you keep your eyes on the road and your hands on the steering wheel.	-	-	-	•
Wireless Apple CarPlay® & Android Auto™	In-car assistant systems that let you access certain features of your smartphone	•	•	•	•
Wireless charging:	Qi Wireless charging for your Smartphone^	-	-	•	•

• = Standard equipment; - = Not available.

^ Please check with your phone provider for the latest information regarding compatability and functionality of mobile devices.

Comfort and Convenience

		CENTRE-LINE	EXCLUSIVE-LINE	HOMURA	HOMURA PLUS
Adjustable Speed Limiter:	A desired maximum speed can be set using the speed limiter switch. The speed limiter prevents vehicle from exceeding the set speed.	•	•	•	•
Air-conditioning:	Climate control air-conditioning	•	•	-	-
	Dual zone climate control air-conditioning	-	-	•	•
Driving mode select switch:	Each time the switch is pressed the system changes between 'Power' mode, 'Normal' mode and 'ECO' drive mode, so that you can select the most suitable mode to suit your driving style.	•	•	•	•
Dynamic Radar Cruise Control (DRCC):	A radar detects the presence of vehicles up to approximately 100m ahead and determines the current vehicle-to-vehicle following distance. It then maintains a suitable following distance from the vehicle ahead. The desired vehicle-to-vehicle distance can also be set by operating the vehicle-to-vehicle distance switch.	•	•	•	•
Electric windows:	Front and rear	•	•	•	•
Engine start / stop button:	Allows the driver to start or stop the cars engine by the press of a button	-	•	•	•
EV drive mode:	In EV drive mode, electric power is supplied by the hybrid battery, and only the electric motor is used to drive the vehicle. This mode allows you to drive in residential areas without concern for noise and fuel emissions.	•	•	•	•
Head-up Display	Windscreen projected featuring key driving information and warnings, such as speed limits onto the windscreen within the driver's field of view.	-	-	-	•
Interior Lighting:	Ambient lighting - Provides illumination to the front doors and centre console	-	-	•	•
	Interior courtesy light	•	•	-	-
	Interior courtesy light with LED illumination	-	-	•	•
Luggage compartment:	Illumination	•	•	•	•
Sunvisors:	Driver's and front passenger's with vanity mirror	•	•	-	•
	Driver's and front passenger's with vanity mirror & light	-	-	•	-

• = Standard equipment; - = Not available.

Safety and Security

		CENTRE-LINE	EXCLUSIVE-LINE	HOMURA	HOMURA PLUS
Airbags:	Driver and front passenger	•	•	•	•
	Front side airbags	•	•	•	•
	Driver & passenger central airbag	•	•	•	•
	Front and rear curtain airbags	•	•	•	•
	Front passenger airbag cut-off switch	•	•	•	•
Anti-lock braking system (ABS)		•	•	•	•
Blind Spot Monitor (BSM) with Parking Support Brake function (Rear- crossing vehicles):	BSM uses radars mounted in the rear bumper to detect vehicles approaching from behind and in the adjacent lane. It alerts the driver to the presence of vehicles in the blind spot on either side by displaying an icon in the appropriate door mirror. If the driver indicates to change lanes with a vehicle in the blind spot, the icon flashes. The Parking Support Brake function (Rear-crossing vehicles) is designed to help you make sure it's safe to start backing up. The system uses the same radars and indicators as BSM to watch for vehicles coming from both sides and alert the driver when they come near.	-	•	•	•
Driver Attention Alert:	Designed to reduce accidents caused by inattentiveness due to driver fatigue. The system watches inputs and the vehicle's movements in the early stages before fatigue is a factor	•	•	•	•
Dynamic Stability Control (DSC)		•	•	•	•
e-Call with GPS:	In the case of an accident, either provides a manual or automated message to the emergency services, which includes the vehicle's location. (European locations only).	•	•	•	•
Emergency brake signal:	When the brakes are applied suddenly, the emergency flashers automatically flash to alert the vehicle behind.	•	•	•	•
Emergency tyre repair kit		•	•	•	•
Hill-start assist control:	When pulling away on an incline, Hill-start assist control helps prevent the car from rolling backwards when the driver moves their foot from the brake to the accelerator pedal by maintaining an automatic brake.	•	•	•	•
ISOFIX child seat anchorage; attached to outer rear seats		•	•	•	•
Lane Tracing Assist (LTA):	If the car begins to drift from the centre of the lane unintentionally, steering assist is applied to correct its course.	•	•	•	•
Pre-Collision System (PCS):	Pre-Collision System (PCS) - Front with emergency steering assist - With Pedestrian and Cyclist Detection, the advanced Pre-Collision System uses both automatic braking and steering assistance to reduce the likelihood and severity of an impact, by detecting oncoming vehicles and crossing pedestrians in traffic and when turning at junctions.	•	•	•	•
	Parking Support Brake (PKSB) (static objects) - If the sensors detect a static object and determines that a collision may occur while parking or traveling at low speeds, the system will operate to lessen the impact with the detected static object and reduce the resulting damage.	-	-	•	•
Rear Cross Traffic Alert (Auto Braking):	Warnings are given when the rear-mounted sensors identify vehicles approaching when reversing. If the system predicts a potential collision, automatic braking will be applied.	-	-	•	•
Remote central locking with deadlocking		•	•	•	•
Road Sign Assist (RSA):		•	•	•	•
Smart keyless entry:	Allows opening and locking of the vehicle without removing the key from your pocket or bag	-	•	•	•
Seatbelt reminder audible warning:	Driver, passenger and rear seats	•	•	•	•
Thatcham approved immobiliser and an alarm meeting ECE requirements		•	•	•	•
Traction Control System (TCS)		•	•	•	•
Tyre Pressure Monitoring System (TPMS)		•	•	•	•

• = Standard equipment; - = Not available.

MAZDA2 HYBRID TECHNICAL INFORMATION

Model availability	1.5 Hybrid Petrol 2WD
	116ps Automatic
Centre-Line	•
Exclusive-Line	•
Homura	•
Homura Plus	•

Dimensions		
Overall length / width ¹⁾ / height (mm)	3,940 / 1,745 (2,020) / 1,500	
Wheelbase (mm)	2,560	
Ground clearance between the axles – unladen (mm)	135	
Front track / Rear track (mm)	1,531 / 1,528	
Cargo volume, acc. to VDA (l) ²⁾ :	5-seat mode to belt line including underfloor storage	286
	2-seat mode including underfloor storage	935
Brake Type - Front / Rear	Ventilated Disc / Solid Disc	
Brake Dimensions (mm) - Front / Rear	282 / 282	
Steering		
Steering gear	Electric Power Steering	
Wall-to-wall turning circle (M)	10.5 (15" Alloys) / 11.0 (16" & 17" Alloys)	



¹⁾ Vehicle width excludes mirrors. Figures in brackets are for width including mirrors.

²⁾ Includes underfloor storage.

5-door Hatchback		1.5 Hybrid Petrol 2WD
		116ps Automatic
Displacement (cc)		1490
Bore x Stroke (mm)		80.5 x 97.6
Valves per cylinder		4
Compression ratio		14:1
FUEL SAVING TECHNOLOGY		
i-stop	Saves fuel by switching off the engine when the car stops.	•
Hybrid system	Provides a blend of petrol and electric power to optimise driving performance.	•
HYBRID BATTERY		
Battery Type		Lithium-ion
Rated Voltage		177.6V
Battery Capacity (Ahr)		4.3 Ahr
Quantity of cells		48
PERFORMANCE		
Maximum power output ps (KW) / rpm		116 (85/5,500)
Max. torque (Nm / rpm)		120/3,600 - 4,800
Acceleration (0-62 mph in seconds)		9.7
Top Speed (mph)		109
FUEL ECONOMY AND CO ₂ EMISSIONS		
WLTP fuel consumption ¹⁾ mpg (l/100km)	Low	91.1 (3.1) - 100.9 (2.8)
	Medium	88.3 (3.2) - 97.4 (2.9)
	High	74.3 (3.8) - 80.7 (3.5)
	Extra High	50.4 (5.6) - 56.5 (5.0)
	Combined	67.3 (4.2) - 74.3 (3.8)
WLTP CO ₂ emissions ¹⁾ (g/km)		98 - 87
EC emission level		Euro Stage6
Recommended fuel		Unleaded 95 RON
Fuel tank capacity (litres)		36
WEIGHTS		
Permitted gross vehicle weight (kg)		1,615
Towing limit ²⁾ (kg):	Braked	450
	Unbraked	450
Maximum roof load (kg)		50

¹⁾ Figures shown are for comparability purposes and may reflect Euro 6d or Euro 6e testing procedures. Please speak to your Mazda dealer for confirmation; only compare fuel consumption and CO₂ figures with other cars tested to the same technical procedures. These figures may not reflect real life driving results, which will depend upon a number of factors including the accessories fitted (post-registration), variations in weather, driving styles and vehicle load. All figures quoted are derived from the latest WLTP test cycle.

²⁾ Towing capacity is based on a 12% gradient and tested in accordance with 92/21/EEC as amended by 95/48/EC.

MAZDA2 HYBRID ACCESSORIES AND EQUIPMENT OVERVIEW

We know how complicated buying a new car can be when it comes to deciphering the latest technology. That's why we have taken the time to provide you with some clarity on what's available on the Mazda2 Hybrid, to help you make the right choice as to which grade will suit your lifestyle best.

Within this section we provide information on just some of our latest accessories, details on our engine & hybrid technology, as well as information on our Advanced Safety Technology.

We don't only make cars that are involving and easy to operate, we do this with our Price & Specification guide too to enable you to make the best decision.

Then all that is left to do is to experience the Mazda2 Hybrid for yourself. To find your local dealer and to arrange a Test Drive, visit www.mazda.co.uk/find-a-dealer



OPTIONS & ACCESSORIES



SCUFF PLATES
£289.10



BOOT LINER
£68.00



DETACHABLE TOW BAR WITH 13 PIN WIRING HARNESS
£1,085.46



LUXURY FLOOR MATS
£79.01



16" ALLOY SILVER WHEELS
£1,139.56



THULE TWO-BIKE BICYCLE CARRIER[^]
£579.41

[^]Detachable tow bar with 13 pin wiring harness required for installation.

Options & Accessories: A small selection of our range of accessories are shown within this Price and Specification guide, and are subject to change. For more information on the entire range of accessories we retail, please visit www.mazda.co.uk/configurator, select your vehicle and visit the 'Options & Accessories' section. The price shown is a non-binding recommendation of Mazda Motors UK, is subject to change and may not include extras such as painting. Alloy wheel prices do not include tyres. Accessory fitment costs may differ between Mazda dealers. For further information about Mazda Genuine Accessories and latest pricing including any fitment cost differences please contact your local Mazda dealer.

HYBRID ENGINE TECHNOLOGY

1.5 3-CYLINDER ENGINE

The highly-efficient, smooth, direct-injection 1.5 3-cylinder petrol engine achieves impressive engine efficiency thanks to high compression combustion. This ensures that more of the energy potential from each drop of fuel is captured.

SELF-CHARGING FULL HYBRID TECHNOLOGY

Experience electric vehicle technology without the need to plug-in to recharge. The Mazda2 Hybrid features a technology which recaptures otherwise lost energy when the vehicle slows down. The lithium-ion battery then stores that energy and uses it to drive the front wheels when circumstances allow, meaning you can drive further on a tank of fuel whilst also contributing to lower CO₂ emissions and other particulates.

The result of both the 1.5 petrol engine and hybrid technology is a car that delivers outstanding performance, low running costs and strong environmental credentials.



DRIVING MODES



The Mazda2 Hybrid features four different driving modes which can be selected to suit the needs of the driver.

NORMAL MODE

Provides an optimal balance of fuel economy, quietness, and dynamic performance. Suitable for normal driving.

POWER MODE

When extra power is needed, this mode controls the hybrid system to provide quick, powerful acceleration. For example when overtaking on the motorway. When the Power mode is selected, the Power mode indicator comes on.

ECO DRIVE MODE

Helps the vehicle drive in the most eco-friendly manner, improving fuel economy by making the engine work in the most efficient manner and by controlling the operation of the air conditioning system. When the Eco drive mode is selected, Eco drive mode indicator comes on.

EV MODE

The button EV mode forces the vehicle into full electric mode. Due to the small battery, the electric range is limited to a maximum of around 0.6 miles (depending on battery charge). Due to the small size of the electric motor the EV mode is switched off when the vehicle speed exceeds approximately 31mph or when the acceleration demand is too high.

ADVANCED TECHNOLOGY



HEAD-UP DISPLAY

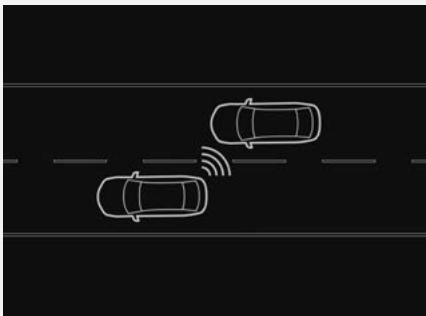
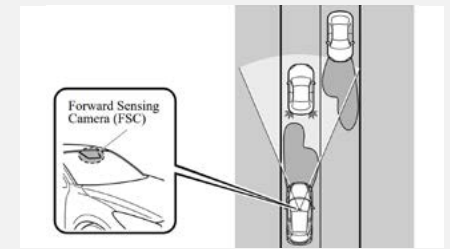
The system projects full-colour information directly onto the windscreen within the driver's line of sight. The displayed information is divided into four sections including driving support system status, RSA (Road Sign Assist) display area, Vehicle speed display and Hybrid System Indicator.

(Standard on Homura Plus only)

AUTOMATIC HIGH BEAM

The Automatic High Beam detects oncoming and preceding vehicles and automatically switches between high and low beams during night driving, making it easier for the driver to recognise hazards.

(Standard across the range)

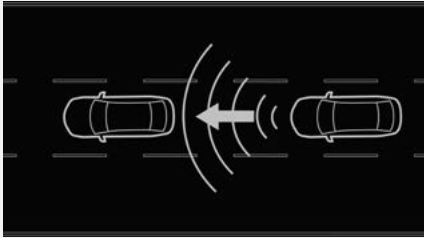


BLIND SPOT MONITOR (BSM) WITH PARKING SUPPORT BRAKE FUNCTION (REAR-CROSSING VEHICLES)

BSM uses radars mounted in the rear bumper to detect vehicles approaching from behind and in the adjacent lane. It alerts the driver to the presence of vehicles in the blind spot on either side by displaying an icon in the appropriate door mirror. If the driver indicates to change lanes with a vehicle in the blind spot, the icon flashes. The Parking Support Brake function (Rear-crossing vehicles) is designed to help you make sure it's safe to start backing up. The system uses the same radars and indicators as BSM to watch for vehicles coming from both sides and alert the driver when they come near.

(Standard on Exclusive-Line and above)

ADVANCED TECHNOLOGY



DYNAMIC RADAR CRUISE CONTROL

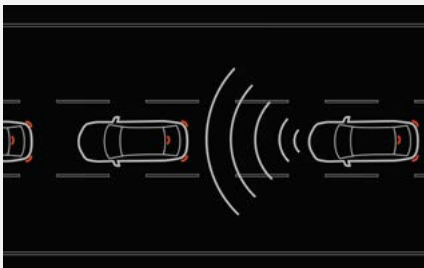
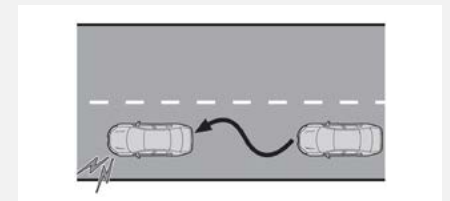
With Dynamic Radar Cruise Control, the vehicle automatically accelerates, decelerates and stops to match the speed changes of the preceding vehicle even if the accelerator pedal is not depressed. In constant speed control mode, the vehicle runs at a fixed speed. The capabilities of Dynamic Radar Cruise Control have been greatly enhanced, earlier detection of preceding vehicles contributes to a smoother and more efficient drive.

(Standard across the range)

LANE TRACING ASSIST

If the car begins to drift from the centre of the lane unintentionally, steering assist is applied to correct its course.

(Standard across the range)



PRE-COLLISION SYSTEM

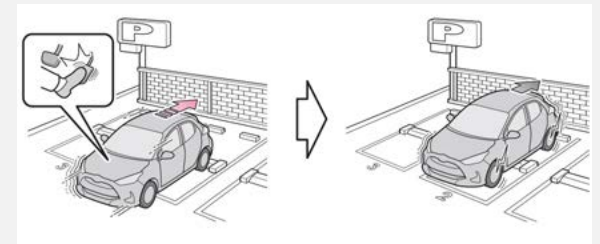
The Pre-Collision System uses a radar sensor and front camera to detect objects in front of the vehicle. When the system determines that the possibility of a frontal collision with an object is high, a warning operates to urge the driver to take evasive action and the potential brake pressure is increased to help the driver avoid the collision. If the system determines that the possibility of a frontal collision with an object is extremely high, the brakes are automatically applied to help avoid or help reduce the impact of the collision.

(Standard across the range)

PARKING SUPPORT BRAKE

If the sensors detect a static object, such as a wall, in the traveling direction of the vehicle and the system determines that a collision may occur due to the vehicle suddenly, the system will operate to lessen the impact with the detected static object and reduce the resulting damage.

(Standard on Homura and Homura Plus)



MAZDA SERVICES



The maximum service interval for your Mazda is 10,000 miles or 12 months whichever occurs first, however, the servicing intervals may reduce based on the style of driving and the conditions under which your vehicle is operated.

MAZDA SERVICE PLAN

MODEL	ENGINE	PRICE~	MONTHLY PAYMENT~
Mazda2 Hybrid	1.5 Hybrid	£699	£21.18

~Service plan pricing and monthly payment pricing is for new vehicles up to one month of age since first registration. Both are inclusive of VAT.

VEHICLE TAX RATES Tax year 2024-25

CO ₂ EMISSIONS FIGURE (G/KM)	PETROL & RDE2 DIESEL - FIRST YEAR RATE	ALTERNATIVE FUEL CARS - FIRST YEAR RATE	STANDARD RATE (12 months)	
			PETROL/DIESEL CARS	ALTERNATIVE FUEL CARS
0	£0	£0	£190	£180
1-50	£10	£0	£190	£180
51-75	£30	£20	£190	£180
76-90	£135	£125	£190	£180
91-100	£175	£165	£190	£180
101-110	£195	£185	£190	£180
111-130	£220	£210	£190	£180
131-150	£270	£260	£190	£180
151-170	£680	£670	£190	£180
171-190	£1,095	£1,085	£190	£180
191-225	£1,650	£1,640	£190	£180
226-255	£2,340	£2,330	£190	£180
Over 255	£2,745	£2,735	£190	£180

First-year rate is paid when first registering a vehicle and is for the first 12 months Vehicle Excise Duty. After the first 12 months, the standard rate applicable at that time is payable. Vehicles with a list price >£40k will be subject to a premium of £410 over the Standard Rate for 5 years from the start of the second licence.

MAZDA FINANCIAL SERVICES

Mazda Financial Services offers a variety of finance and insurance products to suit the needs of both private and business customers. With our wide range of plans and services, no-one is more committed to delivering complete motoring confidence and total peace of mind than Mazda and Mazda Financial Services[†].

MAZDA INSURANCE

When you buy your new Mazda from a Mazda franchised dealer, we'll give you free comprehensive Driveaway Insurance so you can get on the road there and then. Upgrade to our annual cover and benefit from our Mazda Accident Repair Promise all year round. In the event of an accident, unlike most other insurers, we guarantee to repair your Mazda at a Mazda Approved Bodyshop using only Mazda Genuine Parts. This helps to protect your Mazda's safety rating, resale value and manufacturer warranty. Plus, you'll also get windscreen damage cover, EU cover and a complimentary courtesy car. We'll even pay your cancellation fee if you're insured elsewhere*. Eligibility criteria, terms and conditions apply.

Ask your dealer or call Mazda Insurance on 0330 102 7995.

Get a quote online at www.mazdacarinsurance.co.uk

Mazda Insurance is arranged and administered by Verex Insurance Services Ltd which arranges policies from a panel of insurers.

*Offer not available online. Offer conditions apply.

MAZDA EXCESS RETURN VOUCHER

When you apply for Free Driveaway Insurance for your new Mazda, you'll also receive a free 1-year Excess Return voucher which pays back up to £250 of your insurance excess cost, regardless of who you're insured with, if you use our Call Mazda First service. If you have a Mazda Excess Return voucher and need to make an insurance claim, simply Call Mazda First before your insurer on 0800 015 0367.

FREE MAZDA ACCIDENT AFTERCARE

In the event of an accident, Call Mazda First 0800 015 0367 before your insurer for free 24-hour Accident AfterCare and to redeem your £250 Excess Return voucher.

Our dedicated case handlers will liaise with your insurer and arrange Mazda Genuine Parts and repairs at a Mazda Approved Bodyshop, keeping your Mazda 100% Mazda and maintaining your Mazda warranties. We'll also provide accident recovery if your Mazda isn't driveable and a free courtesy car during the repair. Terms and conditions apply.

Save 0800 015 0367 to your mobile phone.

TAX FREE – DIPLOMATIC AND MILITARY SALES

For further information contact your Mazda dealer or contact Mazda on 03457 48 48 48.

MOTABILITY

For all Motability enquiries please contact your Mazda dealer or contact Mazda on 03457 48 48 48.

This price list, dated 4 September 2024, supersedes all previous price lists. It includes changes to Vehicle Excise Duty as confirmed in the October 2018 budget affecting recommended 'On the Road' prices. Final prices shown are recommended 'On the Road' prices and are inclusive of number plates, 12 months' Vehicle Excise Duty and first registration fee. Certain models may be subject to changes in CO₂ emission levels and Vehicle Excise Duty Bands. Due to ongoing updates the specification (including fuel consumption, CO₂ emissions and equipment) of the vehicle you order and receive may be different to that detailed in this guide. Please speak to your dealer for the latest information. Images may not be to UK specification. [†]Subject to status to over 18s. Indemnities may be required. Terms apply. Mazda Financial Services.

CRAFTED IN JAPAN

Mazda Motors UK reserves the right to introduce changes in specification and equipment due to its ongoing product development. Prices are subject to change without prior notice. Colour and trim samples shown in this digital brochure may vary from the actual colours because of the variations of resolutions and colours found in various screen displays, and if printed, limitations within the printing process. Models shown may not be to UK specification. It is recommended that you consult your Mazda dealer when referring to these. Apple CarPlay®, Android Auto™ and Bose are registered trademarks in the U.S. and other countries. Used with permission. The Bluetooth® word mark and logos are owned by the Bluetooth SIG, Inc. and any use of such marks by Mazda Motor Company is under licence. Other trademarks and trade names are those of their respective owners.

www.mazda.co.uk

Mazda Helpline: 03457 48 48 48

Effective from 4 September 2024