



PRIMASTAR





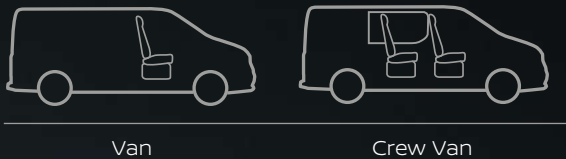


## Ready for your next move

Robust, reliable and practical. Nissan Primastar is ready for whatever tomorrow brings. With the versatility to handle cargo of all shapes and sizes, Nissan Primastar keeps you energised, optimistic and on top of things wherever the road takes you.



# Key performance indicator



## LIGHT ON FUEL, STRONG ON POWER

Discover a powerful engine line up with power from 110 to 170PS and torque of up to 380Nm. Featuring variable-geometry turbocharger, stop/start and ECO mode, Nissan Primastar's engine range balances confident performance with low running costs.

## LOW RUNNING COSTS

Nissan Primastar engines are Euro 6 compliant. Their low performance coupled to 2 years / 18,000 miles service intervals make for very favourable running costs.

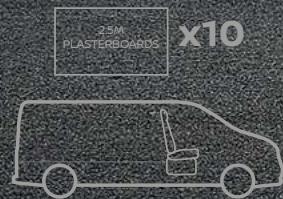
## DESIGNED FOR YOU

There's an ideal Nissan Primastar for you. Choose from two lengths and two heights for the Panel Van, or two lengths for the Crew Van.



## GET THE JOB DONE

Nissan Primastar is a highly capable load carrier. Even the standard version can take three Europallets or up to ten 2.5m long plasterboards. Lift the bulkhead flap and you can carry extra long items such as pipes or carpet rolls - up to 3.75m in the L1 model and up to 4.15m in the L2 model.



## KEEP IN TOUCH

Keep in touch with NissanConnect\*\*, your navigation, communication and audio-entertainment system. Display maps, music, info and phone files on your 8" colour touchscreen, get voice guidance across Europe, enjoy USB or Bluetooth\* audio streaming

\*\*Features available depending on version and grade, as standard or only as option (at an extra charge)



# Stylish and versatile

With its sleek LED headlamps, distinctive Interlock-grille design and bold side vents, Nissan Primastar stands out in a crowd. For maximum versatility, you'll discover two lengths and two heights available for the Panel Van model, as well as a choice of two lengths for the Crew Van models.



LED headlamps



Distinctive Interlock-grille design



Side vents with LED fog lamps







## More efficient, more powerful

Nissan Primastar's efficient engine line-up offers power just when you need it, even on steeper climbs. With variable-geometry turbocharger, all variants offer a confident performance, with 110 to 170PS and up to 380Nm of torque. There is also a choice of transmissions available: a standard 6-speed manual or optional DCT automatic transmission.

For efficiency and lower running costs, all engines are Euro 6 compliant with Stop/Start and smart energy management technology, like ECO mode. For extra peace-of-mind, there's also Nissan's exceptional 5-year, 100,000 miles warranty.



Eco mode



Cruise control





# Space to work or relax

With smart connectivity, 90 litres of storage space and foldable passenger seats that create a useful work table, Nissan Primastar becomes your office on the road. Its car-like interior with satin chrome switches and high quality seat upholstery create a relaxed and comfortable space for a refined drive.



54 litres of storage beneath the passenger seats



Convenient cup holder to safely hold your beverage



Mobile Office functionality



# Always looking out for you

Make parking feel like child's play with front, rear and side parking sensors\* (ultrasonic) and rear parking camera\*. And thanks to a whole suite of other intelligent assistance systems available, Nissan Primastar has your back in any driving situation.



**BLIND SPOT WARNING\***  
When the system detects a vehicle driving in an adjacent lane approaching the rear of the driver's vehicle - a common blind spot area, an LED light appears in the mirror on the side where the other vehicle is approaching. If the driver activates the turn indicator, the LED warning will flash continuously to alert the driver to the danger.



**LANE DEPARTURE WARNING\***  
Lane Departure Warning provides an alert to the driver if they are beginning to leave the travelling lane. The system visually monitors the left and right side lane markers of the traveling lane. If there is a risk of the vehicle leaving the travelling lane unintended, the system flashes an indicator and sounds a warning chime.



**REAR VIEW CAMERA\***  
Makes manoeuvring easier by giving you a clear view from the rear.



**FRONT AND REAR PARKING SENSORS\***  
All-round ultrasonic sensors provide 360° protection against low-speed impacts while parking and manoeuvring.



**TRAFFIC SIGN RECOGNITION\***  
Keeps you up to date with the latest speed limit by detecting road signs as you go.



**INTELLIGENT EMERGENCY BRAKING\***  
Continuously monitors the area in front of the vehicle to identify braking vehicles or parked vehicles and alert the driver to their presence. If the driver does not respond, the system will apply emergency braking.

\*Features available depending on version, as standard or only as option (at an extra charge)

You should not rely solely on driver convenience features. Some features may not work in all conditions and circumstances. Speed and other limitations apply. For terms and conditions relating to Nissan technologies, please contact your Nissan dealer or [www.nissan.co.uk](http://www.nissan.co.uk)



\*EURO NCAP Safety Rating 2024 for commercial vehicles ([www.euroncap.com/en/ratings/rewards/commercial-van-ratings](http://www.euroncap.com/en/ratings/rewards/commercial-van-ratings))







## Stay in the loop

Connect<sup>[1]</sup> your Android or iOS device for seamless connectivity including voice control. With Apple CarPlay<sup>[2]</sup> and Android Auto<sup>TM[2]</sup> access your favourite music, messaging and other apps to stay informed and entertained on the go.

[1] Feature available depending on version, as standard or only as option (at an extra charge).  
[2] Apple CarPlay<sup>®</sup> and Android Auto are available free of charge, depending on model and/or grade. For more information, please contact your Nissan dealer or [www.nissan.co.uk](http://www.nissan.co.uk)  
Apple CarPlay<sup>®</sup> is trademark of Apple Inc., registered in the U.S. and other countries.  
Android, Android Auto and other marks are trademarks of Google LLC.

## Technology which works for you

A responsive 8" touchscreen is your portal to NissanConnect Services app<sup>[3]</sup>. It redefines your relationship with your Primastar by allowing you to connect with your smartphone, e.g., find out where it's parked or check your driving history.



**NISSANCONNECT DISPLAY<sup>[1]</sup>**  
The large touchscreen NissanConnect display puts entertainment, settings, navigation and more at your fingertips. Enhanced voice recognition and easy smartphone integration make it easier than ever to access all the information you need.



**DRIVING AIDS<sup>[1]</sup>**  
Tools to help you drive more easily, including parking assistance, tyre pressure monitoring and tips to help you adopt a more eco-friendly driving style.



**NAVIGATION<sup>[1]</sup>**  
Find your way effortlessly with advanced navigation, featuring: 3D view, speed limit guidance, junction view, real-time traffic information and continued navigation even without a GPS signal, thanks to the systems internal gyroscope.



**E-CALL**  
In case of any emergency, E-call can be set to automatically or manually at the touch of a button, make a call to emergency services. The system is triggered if a collision is detected by your vehicle's sensors.

[3] To use the NissanConnect services you need a NissanConnect Services user account and have to register and log into NissanConnect Services app with your username and password. To use the free NissanConnect Services app, you need a smartphone with a compatible iOS or Android operating system and a SIM card with data option with an existing or separate mobile phone contract between you and your mobile service provider. All services are subject to mobile network coverage.  
The feature responsiveness and use can be impacted when car is receiving a bad signal. For optimal use, please make sure your car is under good network coverage.  
Connecting a mobile phone to use NissanConnect should only be done when the car is parked safely. Use of the system should always be in accordance with the rules of The Highway Code. Drivers should only use the system when it is safe to do so. Users should be aware of the potential for hands-free technology to distract attention from the road, which could impact on having full control of the vehicle.



# Nissan Primastar can handle it

Nissan Primastar is ready to take on any task. With a best-in-market length capacity of 4.15 meters and rear doors that open up to 180° (255° on Tekna grade)\*, it can tackle even the biggest jobs. Add clever storage tools and, depending on configuration, a maximum load volume between 3.2 to 8.9m³ and you have one highly versatile and accomodating load space.



Optional bright LED lighting makes it easier to work in the load space.



A 1.0m wide sliding door is available for one or both\* sides.

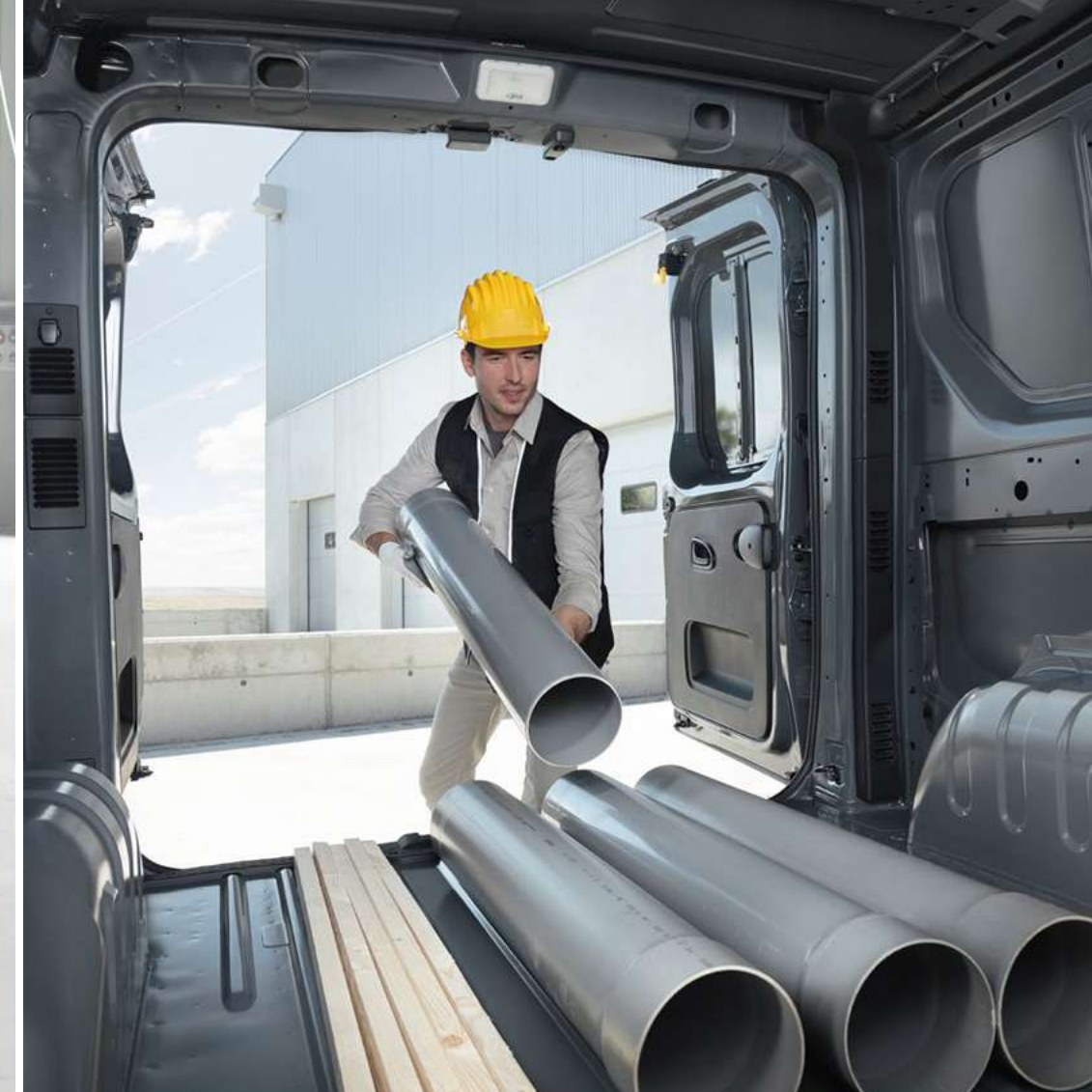


This clever device lets you lock a rear door open

\*Feature available depending on version, as standard or only as option (at an extra charge).







## A smart space

With sliding doors available on both sides, wide-opening rear doors and up to 16 anchor rings in the back, Nissan Primastar makes loading effortless and securing your cargo simple, whatever shape or size it is.

\*Features available depending on version, as standard or only as option (at an extra charge)



Bulkhead flap lifts to allow extra long objects – up to 3.75m in the L1 Primastar or 4.15m in the L2 Primastar.\*

Sliding side door is over a metre wide, so will easily take a Europallet.



Side-hinged rear doors open 90°/180° (255° on Tekna grade) for unimpeded, 1.3m wide access.



Up to 16 built-in side and floor mounted tie-downs to keep your load secure.



# Your personal Nissan Primastar

With Nissan Accessories you can customise your  
Nissan Primastar to match all your business needs.

🔧 Accessory Select products' warranty coverage depends on supplier, for further  
information please speak to your authorised Nissan dealer or repairer.

\*Max. towing capability is dependent on grade, specification, and powertrain



## TRANSPORT

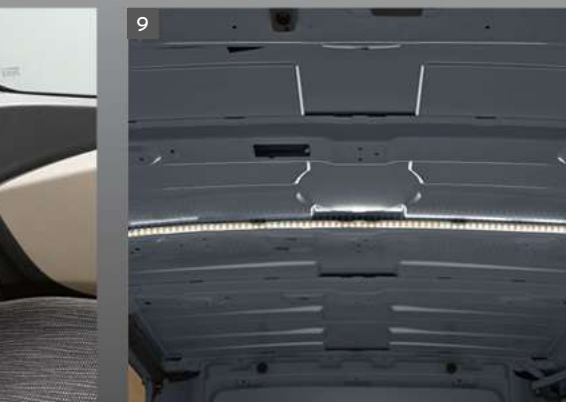
- 1 - Steel roof rack
- 2 - Fixed towbar\*
- 3 - Roof bars
- 4 - Ladder

## COMFORT AND PROTECTION

- 5 - Mats (velour, rubber)
- 6 - Windows protection grill
- 7 - Anti-slip wooden floor
- 8 - Seat cover

## DESIGN

- 9 - LED Lamps





# Add your personality

Make your Nissan Primastar stand out. Choose from a range of colours and add your personal touch with stylish alloy wheels and other options available.

## COLOURS



Comet Grey\* - M  
KNA



Stone Grey - M  
KQA



Urban Grey - S  
KPW/KQR



Glacier White - S  
369/389



Carmin Red\* - M  
NPF



Jet Black - S  
D68

M: METALLIC  
S: SOLID

\*Comet Grey and Carmin Red not available on H2 versions

## WHEELS



16" Wheel Cover  
Standard on Acenta



17" Alloy Wheel  
Standard on Tekna

## TRIMS



Grey - Dark Grey  
Standard on Acenta



Blue - Dark Grey  
Standard on Tekna



# NISSAN

# PRIMASTAR PANEL VAN MY24

The Primastar is a flexible and highly adaptable LCV platform, designed to provide practical and user-friendly service to business drivers across a wide range of industries. These could include transportation and logistics, construction, property maintenance, multi-drop delivery, fast-fit repairs and mobile workshop.

## ACENTA

### SAFETY AND SECURITY

- Driver's and passenger airbag
- ABS and brake assist, VDC + ASR, Hill Start Assist and Trailer Sway Assistant
- Automatic Forward Emergency Braking System (AEBS)
- Lane Departure Warning
- Intelligent Speed Assist (Cruise Control + Traffic Sign Recognition)
- Driver Drowsiness and Attention Warning
- Rear Parking Sensors
- TPMS
- e-Call
- Nissan Connected Services
- Automatic lights and wipers
- Front Fog Lights
- Blind spot mirror in sunvisor
- Alcohol Interlock predisposition
- Spare wheel
- Remote central door locking
- 2-button key
- Superlocking
- Nissan Anti Theft System immobiliser
- Thatcham alarm

### EXTERIOR STYLING

- LED Headlights
- Upper side painted front bumper
- Black rear bumper
- Black mirrors
- Black rear columns
- Black side mouldings
- 16" steel wheels with full wheel covers
- 50:50 split 180 degree unglazed twin rear doors
- Nearside sliding panel door unglazed

### INTERIOR STYLING

- Driver seat with height and lumbar adjustment
- Driver's armrest
- 2-seater passenger bench seat
- Fold-down central seat with detachable A4 clipboard with underseat storage

### COMFORT AND CONVENIENCE

- Electric front windows, one touch driver side
- El. Adjustable, heated door mirrors
- B&W TFT Cluster
- LED light in cabin
- 2 cup holders on dashboard
- Manual A/C

### AUDIO AND NAVIGATION

- USB port & AUX socket
- 8" Media Center
- Android Auto / Apple Carplay

### CARGO AREA

- Full steel bulkhead without window
- Load-through facility in bulkhead
- Anchorage fix rings in load space (close to the floor): 3 on each side of L1 version, 4 on each side of L2 version
- Additional 8 anchorage fix rings on C & D pillars (2 on each side/pillar)
- 12 V Power socket in load area



# TEKNA

## IN ADDITION TO ACENTA

### **SAFETY AND SECURITY**

- Blind Spot Warning (H1 only)
- Auto High Low Beam
- Front parking sensors (H1 only)
- Rear View Camera (H1 only)

### **EXTERIOR STYLING**

- 17" Alloy wheels
- Fully painted front bumper (H1 only)
- Painted rear columns (H1 only)
- Painted mirrors (H1 only)
- Painted rear bumper (H1 only)
- Painted side mouldings (H1 only)

### **INTERIOR STYLING**

- Imitation leather steering wheel

### **COMFORT AND CONVENIENCE**

- Electric folding mirrors
- 7" colour TFT Cluster
- I-Key (H1 only)
- Automatic A/C

### **AUDIO AND NAVIGATION**

- 8" Media Center with Satellite Navigation

### **CARGO AREA**

- 50:50 split 270 degree unglazed twin rear doors (L2H1 only)
- LED light in load area

### **OPTION PACKS\***

- REAR TAILGATE PACK (H1 versions only)
  - Full steel bulkhead behind driver with fixed window
  - Tailgate
  - Heated rear screen
  - Rear wipers
- OFFSIDE SLIDING PANEL DOOR

\*Option Packs available at an additional cost.



# NISSAN PRIMASTAR CREW VAN MY24

Primastar Crew Van has space for 6 passengers along with space for tools you need for the job. The Crew Van is equipped as standard with twin glazed sliding side doors.

## ACENTA

### SAFETY AND SECURITY

- Driver's and passenger airbag
- ABS and brake assist, VDC + ASR, Hill Start Assist and Trailer Sway Assistant
- Automatic Forward Emergency Braking System (AEBS)
- Lane Departure Warning
- Intelligent Speed Assist (Cruise Control + Traffic Sign Recognition)
- Driver Drowsiness and Attention Warning
- Rear Parking Sensors
- TPMS
- e-Call
- Nissan Connected Services
- Automatic lights and wipers
- Front Fog Lights
- Blind spot mirror in sunvisor
- Alcohol Interlock predisposition
- Spare wheel
- Remote central door locking
- 2-button key
- Superlocking
- Nissan Anti Theft System immobiliser
- Thatcham alarm

### EXTERIOR STYLING

- LED Headlights
- Front bumper: upper side painted
- Rear bumper: black
- 16" steel wheels with full wheel covers
- 50:50 split 180 degree unglazed twin rear doors
- Nearside and offside sliding glazed door

### INTERIOR STYLING

- Driver seat with height and lumbar adjustment
- Driver's armrest
- 2-seater passenger bench seat
- Fold-down central seat with detachable A4 clipboard with underseat storage

### COMFORT AND CONVENIENCE

- Electric front windows, one touch driver side
- El. Adjustable, heated door mirrors
- B&W TFT Cluster
- LED light in cabin
- 2 cup holders on dashboard
- Manual A/C

### AUDIO AND NAVIGATION

- USB port & AUX socket
- 8" Media Center
- Android Auto / Apple Carplay

### CARGO AREA

- Glazed bulkhead behind second row seats
- Anchorage fix rings in load space (close to the floor): 2 on each side of L1 version, 3 on each side of L2 version
- 12 V Power socket in load area



# TEKNA

IN ADDITION TO ACENTA

## **SAFETY AND SECURITY**

- Blind Spot Warning
- Auto High Low Beam
- Front parking sensors
- Rear View Camera

## **EXTERIOR STYLING**

- 17" Alloy wheels
- Fully painted front bumper
- Painted rear columns
- Painted mirrors
- Painted rear bumper
- Painted side mouldings
- Open window in glazed sliding doors

## **INTERIOR STYLING**

- Imitation leather steering wheel

## **COMFORT AND CONVENIENCE**

- Electric folding mirrors
- 7" colour TFT Cluster
- I-Key
- Automatic A/C

## **AUDIO AND NAVIGATION**

- 8" Media Center with Satellite Navigation

## **CARGO AREA**

- 50:50 split 270 degree unglazed twin rear doors
- LED light in load area



# Nissan Primastar Dimensions

## PANEL VAN L1 H1



## PANEL VAN L1 H2



DIMENSIONS (MM)	L1H1	L1H2
Length (mm)	5080	
Width/Width (mirrors folded)/Width including mirrors (mm)	1956/2165/2312	
Height (mm)	1971	2486
Wheelbase (mm)	3098	
Front overhang (mm)	1014	
Rear overhang (mm)	968	
LOAD COMPARTMENT	L1H1	L1H2
Length at floor level (mm)	2537	
Length at floor level with bulkhead with trapdoor (mm)	2950	
Maximum length at floor level (with uplifted seat) (mm)	3750	
Length at 1 meter from the floor (mm)	2250	
Maximum width (mm)	1662	
Width between wheel arches (mm)	1268	
Height (mm)	1387	1898
Loading sill (mm)	552	
Load volume (m <sup>3</sup> )	5.8	7.75

SIDE SLIDING DOOR	L1H1	L1H2
Width at 600mm from floor (mm)	907	
Width at 100mm from floor (mm)	1030	
Height (mm)	1284	
REAR DOORS	L1H1	L1H2
Height (mm)	1320	1820
Width at 70mm from floor (mm)	1391	
WEIGHTS (KG)	L1H1	L1H2
	1000 kg	1200 kg
Vehicle weight (unladen) (kg)	1783/2058	1885/2108
Payload without driver (kg)	742/1017	952/1227
GVW (kg)	2800	3010

Kerb weight includes fluids and fuel tank 90% full and excludes the driver (75kg). Payload is calculated as the difference between gross vehicle weight (GVW) and kerb weight. Kerb weight is affected by factors such as body styles and options. The weight figures in the table are related to a standard-specification vehicle according to type approval data. Any additional options specified on the vehicle will increase its kerb weight and reduce its payload accordingly. All weight figures are subject to 5% manufacturing tolerances.



## PANEL VAN L2 H1



## PANEL VAN L2 H2



DIMENSIONS (MM)	L2H1	L2H2
Length (mm)	5480	
Width (mirrors folded) / Width including mirrors (mm)	2165/2312	
Height (mm)	1971	2486
Wheelbase (mm)	3498	
Front overhang (mm)	1014	1014
Rear overhang (mm)	968	968
LOAD COMPARTMENT	L2H1	L2H2
Length at floor level (mm)	2937	
Length at floor level with bulkhead with trapdoor (mm)	3350	
Maximum length at floor level (with uplifted seat) (mm)	4150	
Length at 1 meter from the floor (mm)	2650	
Maximum width (mm)	1662	
Width between wheel arches (mm)	1268	
Height (mm)	1387	1898
Loading sill (mm)	552	
Load volume (m <sup>3</sup> )	6.7	8.9

SIDE SLIDING DOOR	L2H1	L2H2
Width at 600mm from floor (mm)	907	
Width at 100mm from floor (mm)	1030	
Height (mm)	1284	
REAR DOORS	L2H1	L2H2
Height (mm)	1320	1820
Width at 70mm from floor (mm)	1391	
WEIGHTS (KG)	L2H1	L2H2
	1200 kg	1200 kg
Vehicle weight (unladen) (kg)	1819/2094	1921/2144
Payload without driver (kg)	916/1251	866/1089
GVW (kg)	3070	3010

Kerb weight includes fluids and fuel tank 90% full and excludes the driver (75kg). Payload is calculated as the difference between gross vehicle weight (GVW) and kerb weight. Kerb weight is affected by factors such as body styles and options. The weight figures in the table are related to a standard-specification vehicle according to type approval data. Any additional options specified on the vehicle will increase its kerb weight and reduce its payload accordingly. All weight figures are subject to 5% manufacturing tolerances.



CREW VAN

DIMENSIONS (MM)	L1H1	L2H1
Length (mm)	5080	5480
Width (mirrors folded) / Width including mirrors (mm)	1956/2283	
Height (mm)	1971	
Wheelbase (mm)	3098	3498
Front overhang (mm)	1014	1014
Rear overhang (mm)	968	968
LOAD COMPARTMENT	L1H1	L2H1
Length at floor level (min/max) (mm)	1914/2023	2314/2423
Length at 1 meter from the floor (mm)	1340	1740
Maximum width (mm)	1662	
Width between wheel arches (mm)	1268	
Height (mm)	1387	
Loading sill (mm)	552	
Load volume (m <sup>3</sup> )	3,2	4,0

SIDE SLIDING DOOR	L1H1	L2H1
Width at 600mm from floor (mm)	907	
Width at 100mm from floor (mm)	1030	
Height (mm)	1284	
REAR DOORS	L1H1	L2H1
Height (mm)	1320	
Width at 70mm from floor (mm)	1391	
WEIGHTS (KG)	L1H1	L2H1
	1200 kg	1200 kg
Kerb weight (kg)	1975	2014
Max payload inc. driver (kg)	1035	1056
GVW (kg)	3010	3070

Kerb weight includes fluids and fuel tank 90% full and excludes the driver (75kg). Payload is calculated as the difference between gross vehicle weight (GVW) and kerb weight. Kerb weight is affected by factors such as body styles and options. The weight figures in the table are related to a standard-specification vehicle according to type approval data. Any additional options specified on the vehicle will increase its kerb weight and reduce its payload accordingly. All weight figures are subject to 5% manufacturing tolerances.



# Nissan Primastar Configurations

## PANEL VAN



1 SLIDING DOOR



2 SLIDING DOORS

## CREW VAN



2 SLIDING DOORS

## REAR DOORS



90°/180°  
PANELLED FRENCH  
DOORS



90°/180°  
GLAZED FRENCH  
DOORS



TAILGATE



# Nissan Primastar Engines and Weights



## DIESEL ENGINES

Gearbox	N1 / VAN / CREW					
	2.0L DIESEL ENGINE					
	MANUAL				DUAL CLUTCH AUTOMATIC	
Max power (HP)	110	130	150	170	150	170
Max power (kW)	81	96	110	125	110	125
Max torque (Nm)	300	330	350	380	350	380

## WEIGHTS

Gross Vehicle Weight (kg)						
L1H1	3,010	3,010	3,010	3,010	3,010	3,010
L2H1	3,070	3,070	3,070	3,070	3,070	3,070
L1H2	2,900	2,900	2,900	2,900	2,900	2,900
L2H2	3,010	3,010	3,010	3,010	3,010	3,010
Unbraked towing capacity (kg)	750	750	750	750	750	750
Braked towing capacity (kg)	2,000	2,500	2,500	2,500	1,690	1,630



## NISSAN LCV 5-YEAR MANUFACTURER WARRANTY

Nissan now offers a standard 5-Year Pan-European Manufacturer Warranty on its whole LCV range\*. This is much more than just a warranty as it includes:



- 5-Year or 100,000 miles\* bumper-to-bumper protection
- 5-Year Paintwork Warranty – covering the body paint
- 5-Year Nissan Genuine Parts & Accessories Warranty
- 5-Year Roadside Assistance
- 12 Year Perforation Corrosion Warranty on Nissan Primastar
- Fully transferable

And with service intervals at 2 years or 18,000 miles for diesel you'll have 5 years of peace of mind together with low running costs into the bargain.

### AT NISSAN, YOU BRING OUT THE BEST IN US.

---

You spark our imagination. You provoke our ingenuity. You inspire us to change the rules and innovate. And at Nissan, innovation is not just about additions and extensions; it's about crossing the line to reinvent the status quo. It's about developing unexpected solutions to satisfy your wildest and most pragmatic desires. At Nissan, we design vehicles, accessories and services that break the mould - making the practical exciting and the exciting practical to offer you a more exhilarating driving experience everyday.

\*5-Year / 100,000 miles (whichever comes first) Manufacturer Warranty for the LCV range  
Unlimited mileage for Paintwork, Nissan Genuine Parts & Accessories, Roadside Assistance & Corrosion Warranties.  
For more details, please refer to Nissan Warranty Booklet and Maintenance Record for additional information on Warranty.



## CUSTOMER SERVICES

### SPECIALISED LCV NETWORK

Nissan provides a specialised network of Van Centers to support your specific commercial vehicle requirements:

- Pan-European coverage
- Dedicated LCV Sales & Aftersales staff
- Attractive financing solutions
- Tailor-made conversion offers
- Competitive extended warranty offers to go even beyond Nissan LCV 5-Year Warranty.
- Test drive your choice

### AFTERSALES SERVICES

If your car breaks down, it's inconvenient. If your van breaks down, it's a serious blow to your business. Even time allowed for servicing is downtime, when your van isn't earning its keep. At Nissan, we understand these hard business facts. So we do the best to ensure that your van stays where it belongs – working for you, on the road.

### NISSAN SERVICE CONTRACTS AND EXTENDED WARRANTY<sup>[1]</sup>

For total peace of mind and budget control, subscribe to a Nissan Service Contract, which will cover periodic maintenance and parts wear & tear for the mileage and period that suits your business best, keeping your Nissan Primastar in the care of dedicated, expert Nissan technicians. Get even more reassurance with an Extended Warranty to cover possible mechanical and electrical breakdown after the end of your Nissan Primastar warranty.

### 5-YEAR ROADSIDE ASSISTANCE<sup>[2]</sup>

- Pan-European coverage for breakdowns, accidents, non-warrantable incidents (such as flat tyres, lost keys, wrong fuel...)
- 24/7, 365 days
- Emergency Call Centre
- Prompt roadside assistance

If this is not possible and your vehicle is still immobilised after a few hours, we will make sure you are provided with a courtesy vehicle as soon as possible or if necessary, overnight accommodation and travel to your onward destination or back to your base. We will also recover your immobilised vehicle.

<sup>[1]</sup> For full terms and conditions, please visit [www.nissan.co.uk/owners/car-warranty/nissan-extended-warranty](http://www.nissan.co.uk/owners/car-warranty/nissan-extended-warranty)

<sup>[2]</sup> For full terms and conditions, please visit [www.nissan.co.uk/owners/car-breakdown-cover](http://www.nissan.co.uk/owners/car-breakdown-cover)





# Defy Ordinary

Deep dive into the Nissan Primastar experience: [www.nissan.co.uk/vehicles/new-vehicles/primastar](http://www.nissan.co.uk/vehicles/new-vehicles/primastar)

Follow Nissan Primastar on Facebook, Twitter and Youtube.

Every effort has been made to ensure that the content of this publication is correct at the time of going to press (Nov 2024). In accordance with the company's policy of continuously improving its products, Nissan Europe reserves the right to change at any time the specification and the vehicles described and shown in this publication. Nissan dealers will be informed of any such modifications as quickly as possible. Please check with your local Nissan dealer to receive the most up-to-date information. Because of the limitations of the printing processes used, the colours shown in this brochure may differ slightly from the actual colours of the paint and interior trim materials used. Reproduction in whole or part of this brochure without the written permission of Nissan Europe is forbidden. This brochure is made from chlorine free paper - MY24 Primastar brochure 11/2024 - Printed in EU. Created by DESIGNORY, France and produced by eg+ worldwide, France - Tel.: +33 1 49 09 25 35.