



NISSAN

JUKE



[Exterior design](#) | [Interior design](#) | [Technology & Performance](#) | [Interior space](#) | [Style & Accessories](#)

[Print](#) | [Close](#)



New Nissan Juke Who needs ordinary?

The New Nissan Juke puts the joy back into urban vehicles, starting with its bold, uncompromising design. Inside, your whole family will be captivated by high-quality materials and attention to detail, and surrounded with advanced technologies. Start it up and press the accelerator, you'll be transformed by its responsive attitude in every drive.



Images and descriptions shown are for guidance purposes. In some instances photos are of non-local specification vehicles and do not represent a specific model, grade or offer. The features shown may not be available or may not be available as standard or only as option.



Powerful presence. Attractive attitude.

The new iconic yellow is the perfect shade to show off New Juke's bold looks and strong personality. The new N-Sport grade is even better equipped to stand out from the crowd.



Hybrid grille



N-Sport with silver front lip finisher*



N-Sport with Black rear finisher*



New 19" Black Akari Alloy Wheel*



*Model shown New Nissan Juke Hybrid N-Sport.
N-Sport includes some Nissan Genuine Accessories





Feel the pleasure.

New Juke's interior is designed around the driver, from its new centre console, larger glove box, bigger infotainment screen and fully digital meters to the ambient lighting and Alcantara® upholstery. Sit down, get comfortable and enjoy the ride.



Softer steering wheel leather*



12.3" fully digital meter*



12.3" NissanConnect screen*



Alcantara® and yellow finisher*



Ambient lighting*



Frameless rear view mirror*

**Feature available depending on version, as standard or only as option (at an extra charge).*



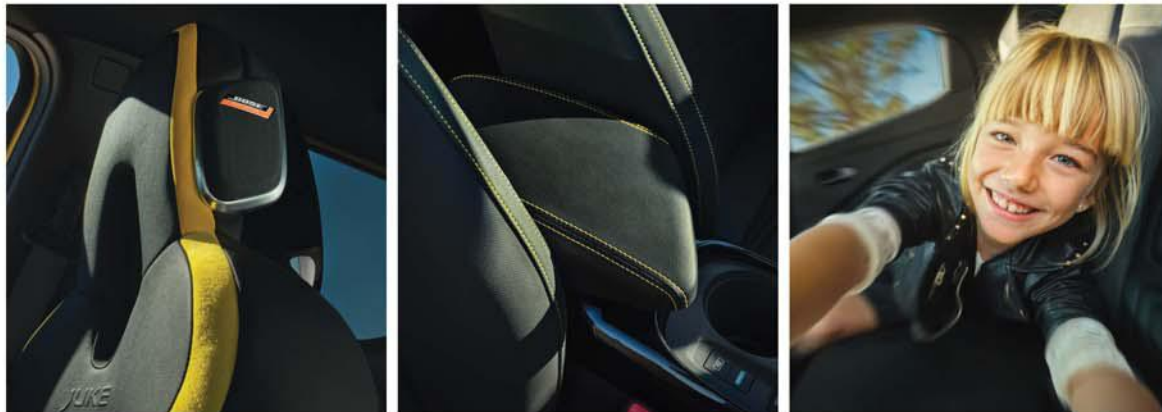
Feel the quality.

The interior of Juke N-Sport is designed with attention to detail. Its premium black headliner*, black and yellow Alcantara® quilt and yellow stitching* highlight the craftsmanship and design of the monoform seats, which cocoon the driver for a uniquely immersive driving experience. Bose® Personal® Plus sound with Ultra Nearfield speakers built into the front headrests* and 10 strategically placed Bose® speakers create the ultimate listening experience*.



Black and Yellow Alcantara®, new quilt design and yellow stitching*

Monoform sport seat



Bose® Personal® Plus*

Adjustable armrest*

*Feature available depending on version, as standard or only as option (at an extra charge).





Hybrid or Petrol. Your choice of powertrain.

New Juke rethinks hybrid technology. Combine the smooth acceleration of an electric motor with a responsive petrol engine, or choose the DIG-T 114hp petrol engine, available with a manual or DCT automatic gearbox.

114hp
Petrol

143hp
Hybrid

[Exterior design](#) | [Interior design](#) | [Technology & Performance](#) | [Interior space](#) | [Style & Accessories](#)

[Page 1](#) | [Page 2](#) | [Page 3](#) | [Page 4](#)

[Print](#) | [Close](#)





**Comparison made between Nissan Juke N-Connecta 1.0 114hp DCT and Nissan Juke N-Connecta Hybrid 143hp. Nissan Juke N-Connecta DCT 114hp, petrol/diesel: fuel consumption (l/100 km): low: 7.5; medium: 5.6; high: 5.1; maximum: 5.2; combined: 6.1; CO₂ emissions combined (g/km): 138. Nissan Juke N-Connecta Hybrid 143hp: fuel consumption combined (l/100 km): 4.8; CO₂ emissions combined (g/km): 109. Vehicle has been homologated in accordance with EU regulations using the more realistic WLTP test procedure.*



Hybrid Powertrain.

The hybrid powertrain automatically selects the most efficient power source between the electric motor, the petrol engine or a combination of the two, for the optimal performance and efficiency. Juke Hybrid is reactive to throttle inputs, giving a smooth and enjoyable drive.



e-Pedal Step

e-Pedal Step gives you the option to accelerate and decelerate effectively with just the accelerator pedal at speeds above 10km/h.



Smart multi modal gearbox

Nissan Juke comes with an advanced low friction multi-mode gearbox that provides optimal use of power, whether electric, petrol engine, or both.

Up to **27%*** fuel optimisation in combined drive



Petrol Engine.

Nissan Juke is also available with a lightweight, 1.0-litre internal combustion engine which combines fuel economy with plenty of power. The electronically controlled turbocharger and reduced friction design gives smooth and responsive power. Switch to ECO mode for fuel efficiency and SPORT mode for performance. Available with manual or automatic transmission.



Always connected.

Stay connected^{[1][3]} with your car thanks to the NissanConnect Services app - unlock the doors, flash the lights, locate your car easily, and more. Smartphone connectivity will keep you seamlessly connected to the world around you with wireless Android Auto^{TM[2]} and Apple CarPlay^{®[2]}.



12.3" NissanConnect screen^[3]



2 x rear USB



Wireless charger^{[3][4]}



Scan the code to download the NissanConnect Services app and connect to your New Nissan.

[1] To use NissanConnect Services you need a smartphone with compatible iOS or Android operating system and a SIM card with data option from a mobile service provider. All services are subject to mobile network coverage.

Services are available depending on country, model, grade and service period. Some services will be subject to a fee for the subscription period detailed in the NissanConnect Services app. For more information please visit your NissanConnect Services app, Nissan website, Nissan dealer or call centre (0330 123 1231).

[2] Apple CarPlay[®] is trademark of Apple Inc., registered in the U.S. and other countries. Android Auto[™] and the Android Auto logo are trademarks of Google LLC.

[3] Feature available depending on version, as standard or only as option (at an extra charge).

[4] Wireless charging performance of non-Qi certified devices may vary please consult your manufacturer for further information.



There when it counts.

Nissan Juke is equipped with advanced ProPILOT Assist safety technologies, designed to help keep you and your passengers safe for improved peace of mind.



INTELLIGENT CRUISE CONTROL
Keeps your distance by measuring the space from the vehicle ahead, controlling acceleration and deceleration to automatically maintain a suitable following distance within your set speed.



INTELLIGENT BLIND SPOT INTERVENTION
Alerts you if there's a vehicle in the blind spot area on either side of the car, and helps bring you back into line.



INTELLIGENT LANE INTERVENTION
Warns the driver when the vehicle has left the centre of the travelling lane and helps assist the driver to return to the centre of the lane by applying the brakes to the left or right wheel individually (for a short period of time).



INTELLIGENT EMERGENCY BRAKING
With pedestrian and cyclist recognition, your vehicle monitors the surrounding area in front of the car for vehicles, pedestrians and cyclists, helping avoid or reduce damage caused by collisions.



A view from all sides.

Fear no parking spot. Intelligent Around View Monitor^[2] makes parking easier with 4 cameras providing a 360° bird's-eye view and helping you navigate those tight parking spaces.



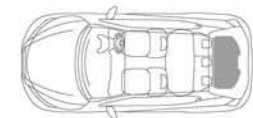
[1] ProPILOT Assist is available on a limited range of vehicles. ProPILOT Assist is an Advanced Driver Assist technology but cannot prevent collisions. ProPILOT Assist is intended for "Eyes on/ Hands On" for highways only (road separated by Barriers). Driver should monitor all traffic signs and obey traffic laws. It is the driver's responsibility to stay alert, drive safely and remain in control of the vehicle at any time.

[2] Feature available depending on version, as standard or only as option (at an extra charge). You should not rely solely on driver convenience features. Some features may not work in all conditions and circumstances. Speed and other limitations apply. For terms and conditions relating to Nissan technologies, please contact your Nissan dealer or visit <https://www.nissan.co.uk/legal/terms-conditions.html>



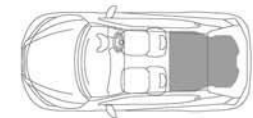
Room for everyday life.

Juke is roomy and versatile to fit all the fun that awaits. The easy-fold split rear seat increases the boot size so you can carry larger cargo like huge balloons, bikes or luggage.



PETROL
422L
boot space

HYBRID
354L
boot space



PETROL
1305L
with folded
seats

HYBRID
1237L
with folded
seats





Your Juke. Your way.

From powertrain option, and equipment level to colours, accessories and more, this is where you can build your very own Juke to fit your personality. Nissan Juke is available in a dazzling array of 11 body colours and 13 two-tone combinations - so whatever your style, taste or personality, we've got you covered.



COLOURS

MONOTONE (GRADE PRESENTED: TEKNA)



PAINT

SOLID



Z10 FLAME RED



326 ARCTIC WHITE



ECE ICONIC YELLOW



NBV FUJI SUNSET RED



KBY CERAMIC GREY



QBE PEARL WHITE

METALLIC & PEARL



GAT PEARL BLACK



KAD GUN METALLIC



KYO BLADE SILVER



RCF MAGNETIC BLUE



NBQ BURGUNDY

TWO-TONE (GRADE PRESENTED: TEKNA+)



ROOF

NBV FUJI SUNSET RED



YAX PEARL BLACK



XFB GUN METALLIC

KYO BLADE SILVER



YAY PEARL BLACK



XEZ FUJI SUNSET RED



XEE BURGUNDY

KH3 SOLID BLACK



YAS ICONIC YELLOW



YAU FUJI SUNSET RED



XEX CERAMIC GREY



XKJ PEARL WHITE



GAQ GUN METALLIC



YAV BLADE SILVER



XGZ MAGNETIC BLUE



XDQ BURGUNDY



STANDARD EQUIPMENT

EXTERIOR

- Grained plastic black wheel arch mouldings, door mouldings, front and rear bumper finishers
- Grained black plastic exterior door handles
- LED Headlamps and Daytime Running Lights
- Shark fin antenna
- Green-tinted windows (no privacy glass) & UV cut for windscreen. Defogger for rear window
- Push-push type fuel lid

INTERIOR

- 12.3" infotainment touch screen display with Radio, DAB, Bluetooth, Voice Recognition, wireless Android Auto™ & Apple CarPlay®
- 7" Colour TFT Screen Combimeter
- Melange fabric with black PVC accent dashboard
- Manual dimming interior rear view mirror
- Front monoform sporty design seat with integrated headrest
- Centre console with integrated elongated armrest
- 4 Speakers (Front doors x2, Rear doors x2)
- Multifunction steering wheel with Meter controls, Audio, Tel, Cruise control, Voice Recognition, Speed Limiter
- Automatic Air Conditioning for HEV, Manual Air Conditioning for Petrol
- Electric Parking brake with auto hold function
- 2x Front USB (type A + type C) + 12V socket
- 2x Rear USB (type A + type C)
- Rear View Camera

SAFETY

- Cruise Control & Speed Limiter
- Intelligent Emergency Braking with Pedestrian & Cyclist Recognition
- Lane Departure Warning with Intelligent Lane Intervention
- High Beam Assist
- Driver Attention Alert (DAA)
- Traffic Sign Recognition
- Regenerative braking (hybrid only)
- Stop & Start system

WHEEL COVER
- 17" Sakura



COLOURS

- Monotone Solid paint

EXTERIOR DESIGN



OPTIONAL EQUIPMENT

EXTERIOR

- Rain sensing wipers (as part of Comfort Pack)

INTERIOR

- Comfort Pack including:
 - Automatic Climate Control
 - Rain sensing wipers
 - Heated Front seats
 - Heated & Auto-folding mirrors
- Telematics services (remote operation via Nissan App)
- Spare wheel (space saver type) [Luggage board not compatible with spare wheel for HEV]

COLOURS

- Monotone Metallic or Pearl paint

INTERIOR DESIGN

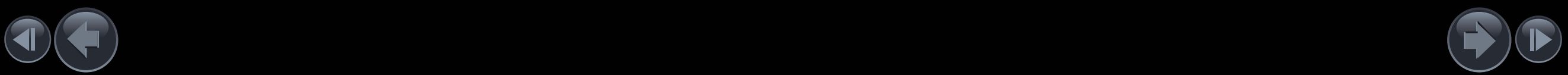


TRIM

- Textile Seats



You should not rely solely on driver convenience features. Some features may not work in all conditions and circumstances. Speed and other limitations apply. For terms and conditions relating to Nissan technologies, please contact your Nissan dealer or visit <https://www.nissan.co.uk/legal/terms-conditions.html>



STANDARD EQUIPMENT

EXTERIOR

- Electric foldable and heated exterior mirrors
- Grained plastic black wheel arch mouldings, door mouldings, front and rear bumper finishers
- LED Headlamps and Daytime Running Lights
- Shark fin antenna
- Privacy Glass
- Push-push type fuel lid

INTERIOR

- 12.3" infotainment touch screen display with Radio, DAB, Bluetooth, Voice Recognition, wireless Android Auto™ & Apple CarPlay®
- 12.3" Colour TFT Screen Combimeter
- Ambient lighting
- Technical grain PVC dashboard
- Smooth leather steering wheel and shift knob
- Automatic dimming frameless interior rear view mirror
- Front monoform sporty design seat with integrated headrest
- Centre console with integrated elongated armrest
- 6 Speakers (Front doors x2, Front tweeters x2, Rear doors x2)
- Multifunction steering wheel with Meter controls, Audio, Tel, Cruise control, Voice Recognition, Speed Limiter
- Automatic Air Conditioning
- Electric Parking brake with auto hold function
- Drive mode selector (Eco/Normal/Sport)
- Navigation system
- Intelligent Key with Walk Away Lock and Approach Unlock functions
- 2x Front USB (type A + type C) + 12V socket
- 2x Rear USB (type A + type C)
- Wireless phone charger
- Rear View Camera

SAFETY

- Cruise Control & Speed Limiter
- Intelligent Emergency Braking with Pedestrian & Cyclist Recognition
- Lane Departure Warning with Intelligent Lane Intervention
- High Beam Assist
- Driver Attention Alert (DAA)
- Traffic Sign Recognition
- Regenerative braking (hybrid only)
- Stop & Start system
- Front and rear parking sensors

ALLOY WHEEL

- New 17" Black and Diamond Cut



COLOURS

- Monotone Solid paint

EXTERIOR DESIGN



OPTIONAL EQUIPMENT

INTERIOR

- Heat Pack including :
 - Heated Front seats
 - Heated windshield
 - Heated steering wheel
 - Height adjustable passenger seat
- Spare wheel (space saver type) [Luggage board not compatible with spare wheel for HEV]

SAFETY

- Advanced Safety Shield Pack* (Manual transmission only), including:
 - Intelligent Around View Monitor (360° colour camera)
 - Blind Spot Intervention
 - Rear Cross-Traffic alert
 - Moving Object Detection
 - Lane Keep Assist
- ProPILOT Assist Pack (Automatic transmission only), including:
 - Intelligent Around View Monitor (360° colour camera)
 - Blind Spot Intervention
 - Rear Cross-Traffic alert
 - Intelligent Cruise Control
 - Moving Object Detection
 - Lane Keep Assist
 - Traffic Jam Pilot

COLOURS

- Monotone Metallic or Pearl paint
- Two-Tone paint with black, red or silver roof

INTERIOR DESIGN

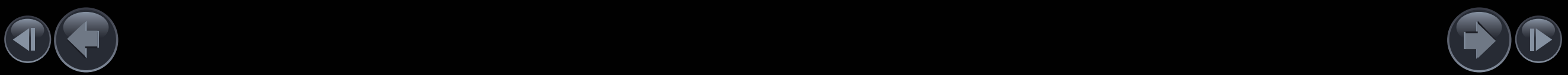


TRIM

- Part PVC Seats with textile accent



You should not rely solely on driver convenience features. Some features may not work in all conditions and circumstances. Speed and other limitations apply. For terms and conditions relating to Nissan technologies, please contact your Nissan dealer or visit <https://www.nissan.co.uk/legal/terms-conditions.html>



STANDARD EQUIPMENT

EXTERIOR

- Electric foldable and heated exterior mirrors
- Grained plastic black wheel arch mouldings, door mouldings, front and rear bumper finishers
- LED Headlamps and Daytime Running Lights
- Shark fin antenna
- Privacy Glass
- Push-push type fuel lid
- Front fog lamps

INTERIOR

- 12.3" infotainment touch screen display with Radio, DAB, Bluetooth, Voice Recognition, wireless Android Auto™ & Apple CarPlay®
- 12.3" Colour TFT Screen Combimeter
- Ambient lighting
- Technical grain PVC dashboard
- Smooth leather steering wheel and shift knob
- Automatic dimming frameless interior rear view mirror
- Front monoform sporty design seat with integrated headrest
- Centre console with integrated elongated armrest
- BOSE® Personal Audio System
- Multifunction steering wheel with Meter controls, Audio, Tel, Cruise control, Voice Recognition, Speed Limiter
- Automatic Air Conditioning
- Electric Parking brake with auto hold function
- Drive mode selector (Eco/Normal/Sport)
- Navigation system
- Intelligent Key with Walk Away Lock and Approach Unlock functions
- 2x Front USB (type A + type C) + 12V socket
- 2x Rear USB (type A + type C)
- Wireless phone charger
- Rear View Camera
- Heat Pack (heated front seats, windshield and steering wheel, plus height adjustable passenger seat)

SAFETY

- Cruise Control & Speed Limiter
- Intelligent Emergency Braking with Pedestrian & Cyclist Recognition
- Lane Departure Warning with Intelligent Lane Intervention
- High Beam Assist
- Driver Attention Alert (DAA)
- Traffic Sign Recognition
- Regenerative braking (hybrid only)
- Stop & Start system
- Intelligent Around View Monitor (360° colour camera)
- Blind Spot Intervention
- Rear Cross-Traffic alert
- Intelligent Cruise Control
- Moving Object Detection
- Lane Keep Assist
- Traffic Jam Pilot (automatic transmission only)

ALLOY WHEEL



COLOURS

- Monotone Solid paint

EXTERIOR DESIGN



INTERIOR DESIGN



TRIM

- Synthetic leather seats with new quilting and headrest hole gloss black finisher

OPTIONAL EQUIPMENT

INTERIOR

- Spare wheel (space saver type) [Luggage board not compatible with spare wheel for HEV]

COLOURS

- Monotone Metallic or Pearl paint
- Two-Tone paint with black, red or silver roof

You should not rely solely on driver convenience features. Some features may not work in all conditions and circumstances. Speed and other limitations apply. For terms and conditions relating to Nissan technologies, please contact your Nissan dealer or visit <https://www.nissan.co.uk/legal/terms-conditions.html>



STANDARD EQUIPMENT

EXTERIOR

- Electric foldable and heated exterior mirrors
- Grained plastic black wheel arch mouldings, door mouldings, front and rear bumper finishers
- LED Headlamps and Daytime Running Lights
- Shark fin antenna
- Privacy Glass
- Push-push type fuel lid
- Satin dark grey exterior finishers
- Front fog lamps

INTERIOR

- 12.3" infotainment touch screen display with Radio, DAB, Bluetooth, Voice Recognition, wireless Android Auto™ & Apple CarPlay®
- 12.3" Colour TFT Screen Combimeter
- Ambient lighting
- Technical grain PVC dashboard
- Synthetic leather seat with new quilting and headrest hole gloss black finisher
- Smooth leather steering wheel and shift knob
- Automatic dimming frameless interior rear view mirror
- Front monoform sporty design seat with integrated headrest
- Centre console with integrated elongated armrest
- BOSE® Personal Audio System
- Multifunction steering wheel with Meter controls, Audio, Tel, Cruise control, Voice Recognition, Speed Limiter
- Automatic Air Conditioning
- Electric Parking brake with auto hold function
- Drive mode selector (Eco/Normal/Sport)
- Navigation system
- Intelligent Key with Walk Away Lock and Approach Unlock functions
- 2x Front USB (type A + type C) + 12V socket
- 2x Rear USB (type A + type C)
- Wireless phone charger
- Rear View Camera
- Midnight interior trim: Black partial synthetic leather with black Alcantara inserts
- Heat Pack (heated front seats, windshield and steering wheel, plus height adjustable passenger seat)

SAFETY

- Cruise Control & Speed Limiter
- Intelligent Emergency Braking with Pedestrian & Cyclist Recognition
- Lane Departure Warning with Intelligent Lane Intervention
- High Beam Assist
- Driver Attention Alert (DAA)
- Traffic Sign Recognition
- Regenerative braking (hybrid only)
- Stop & Start system
- Front & Rear parking sensors
- Intelligent Around View Monitor (360° colour camera)
- Blind Spot Intervention
- Rear Cross-Traffic alert
- Intelligent Cruise Control
- Moving Object Detection
- Lane Keep Assist
- Traffic Jam Pilot (automatic transmission only)

ALLOY WHEEL

- 19" Tekna+



ALLOY WHEEL

- 19" Aero



COLOURS

- Two-Tone paint with black, red or silver roof

EXTERIOR DESIGN



INTERIOR DESIGN Midnight trim



STANDARD Midnight trim

- Black partial synthetic leather and Alcantara® seats with new quilting and headrest hole gloss black finisher



OPTIONAL EQUIPMENT

INTERIOR

- Spare wheel (space saver type) [Luggage board not compatible with spare wheel for HEV]

You should not rely solely on driver convenience features. Some features may not work in all conditions and circumstances. Speed and other limitations apply. For terms and conditions relating to Nissan technologies, please contact your Nissan dealer or visit <https://www.nissan.co.uk/legal/terms-conditions.html>



STANDARD EQUIPMENT

EXTERIOR

- Electric foldable and heated exterior mirrors
- Grained plastic black wheel arch mouldings, door mouldings, front and rear bumper finishers
- LED Headlamps and Daytime Running Lights
- Shark fin antenna
- Privacy Glass
- Push-push type fuel lid
- Gloss black exterior finishers
- Front fog lamps

INTERIOR

- 12.3" infotainment touch screen display with Radio, DAB, Bluetooth, Voice Recognition, wireless Android Auto™ & Apple CarPlay®
- 12.3" Colour TFT Screen Combimeter
- Ambient lighting
- Technical grain PVC dashboard
- Synthetic leather seat with new quilting and headrest hole gloss black finisher
- Smooth leather steering wheel and shift knob
- Automatic dimming frameless interior rear view mirror
- Front monoform sporty design seat with integrated headrest
- Centre console with integrated elongated armrest
- BOSE Personal Audio System
- Multifunction steering wheel with Meter controls, Audio, Tel, Cruise control, Voice Recognition, Speed Limiter
- Automatic Air Conditioning
- Electric Parking brake with auto hold function
- Drive mode selector (Eco/Normal/Sport)
- Navigation system
- Intelligent Key with Walk Away Lock and Approach Unlock functions
- 2x Front USB (type A + type C) + 12V socket
- 2x Rear USB (type A + type C)
- Wireless phone charger
- Rear View Camera
- Icon interior trim: Black partial synthetic leather with yellow Alcantara inserts & stitching
- Heat Pack (heated front seats, windshield and steering wheel, plus height adjustable passenger seat)

SAFETY

- Cruise Control & Speed Limiter
- Intelligent Emergency Braking with Pedestrian & Cyclist Recognition
- Lane Departure Warning with Intelligent Lane Intervention
- High Beam Assist
- Driver Attention Alert (DAA)
- Traffic Sign Recognition
- Regenerative braking (hybrid only)
- Stop & Start system
- Front & Rear parking sensors
- Intelligent Around View Monitor (360° colour camera)
- Blind Spot Intervention
- Rear Cross-Traffic alert
- Intelligent Cruise Control
- Moving Object Detection
- Lane Keep Assist
- Traffic Jam Pilot (automatic transmission only)

ALLOY WHEEL

- 19" Black Akari



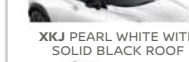
COLOURS



YAV PEARL BLACK WITH BLAD SILVER ROOF



YAV BLADE SILVER WITH SOLID BLACK ROOF



XKJ PEARL WHITE WITH SOLID BLACK ROOF



XEQ CERAMIC GREY WITH SOLID BLACK ROOF



GAQ GUN METALLIC WITH SOLID BLACK ROOF



YAS ICONIC YELLOW WITH SOLID BLACK ROOF

EXTERIOR DESIGN



INTERIOR DESIGN Icon trim



STANDARD Icon trim

- Black partial synthetic leather and yellow Alcantara® seats with new quilting, yellow stitching and headrest hole gloss black finisher

OPTIONAL EQUIPMENT

INTERIOR

- Spare wheel (space saver type) [Luggage board not compatible with spare wheel for HEV]

ALLOY WHEEL

- 19" Aero



Only on Hybrid transmission

You should not rely solely on driver convenience features. Some features may not work in all conditions and circumstances. Speed and other limitations apply. For terms and conditions relating to Nissan technologies, please contact your Nissan dealer or visit <https://www.nissan.co.uk/legal/terms-conditions.html>



More JUKE, more you.

Nissan Accessories are designed to bring advanced technology, dynamism and elegance to your New Juke. Do more, go further and enjoy our Juke Accessory line-up.

- | | | |
|---------------------------------|---|---|
| 1 - Front lip finisher lower | 6 - Aluminium load carrier with quick fix | 11 - Velour floor mats (these eco-friendly mats are made of 46% ocean-recycled plastic) |
| 2 - Mirror cap carbon black | 7 - Trunk liner reversible | 12 - Illuminated kickplates (front only) |
| 3 - Trunk entry guard | 8 - Mudguards (front & rear) | |
| 4 - Trunk spoiler carbon black | 9 - Roof mounted bike carrier | |
| 5 - Bike carrier towbar mounted | 10 - Towbar removable | |

Feature available depending on version, as standard or only as option (at an extra charge). For more information, please contact your local Nissan dealer



ENGINE & DIMENSIONS

5 DOORS / 5 SEATS	PETROL		HYBRID
A - Overall Length (mm)	4210		
B - Wheelbase (mm)	2636		
C - Overall Width without mirrors (mm)	1800		
D - Overall Height (mm)	1593		
Displacement (cc)	999	1598	
Transmission	Manual	Automatic	Automatic
Combined Output (PS)	114 (84kW)		143 (105kW)
Driven Wheels	Front		
Torque (NM)	200		148 / 205
Acceleration (0-62mph in s)	10.7	11.8	10.1
Max. Speed (in mph)	112		103
Combined CO ₂ (g/km) ^[1]	From 133	From 137	From 109
Combined Fuel Emission (l/100km) ^[1]	From 5.9	From 6.1	From 4.8
Mass in Running Order (kg) - Vehicle with all fluids & driver	1274 - 1318	1299 - 1343	1406 - 1451
Gross Vehicle Weight (kg) - Vehicle + maximum payload	1700	1725	1810
Gross Train Weight (kg) - Vehicle + trailer	2950	2975	2560
Towing Capacity (braked, kg) ^[2]	1250	750	
Boot space Behind 2 nd row (L)	422	354	
Boot space Up to roof with all folded seats (L)	1305	1237	
Fuel Tank capacity (L)	46		



[1] WLTP figures shown are for comparability purposes. Actual real-world driving results may vary depending on factors including the starting charge of the Lithium Ion battery (Hybrid version), accessories fitted after registration, weather conditions, driving styles and vehicle load.

[2] Towing capacity will vary depending on vehicle specification.



Service Contracts*

Give your Nissan Juke the care it deserves with a Nissan Service Contract that covers all the scheduled operations recommended by Nissan and specified in the owner's manual & warranty booklet. Maintenance Contract allows you to know from the start how much your maintenance will cost and protects you against price inflation. In addition to the scheduled operations, you can benefit from the replacement of wear and tear parts such as wiper blades or brake pads by subscribing to a Full Maintenance Contract. Select the duration that covers your needs and benefit from the use of Nissan Genuine Parts fitted by our trained technicians, at a discounted price. A well maintained vehicle has a greater resale value. If you sell your Nissan before your contract expires, the Service Contract will be transferred to the new owner. So do not wait any longer and subscribe to a Nissan Service Contract for extra peace of mind!

Extended Warranty

Nissan Extended Warranty gives you the opportunity to extend your warranty for a longer period or mileage. Select the contract that best suits your driving usage. In case of a repair, only Nissan genuine parts will be used and fitted by Nissan trained technicians.

FOR MORE INFORMATION CONTACT YOUR NISSAN DEALER OR REPAIRER

*New cars are eligible for plans up to 4 years / 4 services and cars older than 2 months from the date of first registrations are eligible for 2 years / 2 services. Available at participating dealers only. Nissan reserves the right to amend or withdraw the offer at any time without notice. For full terms and conditions click here.



90

NISSAN
90th ANNIVERSARY

SUSTAIN ABILITY

Nissan's strategy centres on sustainability, aiming for carbon neutrality by 2050 and achieving a 41.2% reduction in CO₂ emissions from new vehicles compared to 2000. The company plans to electrify all-new vehicle offerings in key markets by the early 2030s. We are committed to developing driver assistance technologies for safer journeys, with 2.27 million vehicles already equipped with ProPILOT Assist systems. Additionally, Nissan is focused on creating a diverse, equitable, and inclusive workplace.



90 YEARS OF DARING TO DO WHAT OTHERS DON'T.

We have built our heritage on a passion for innovation and electric mobility, from the creation of the first Datsun in 1933 to cutting-edge technologies such as e-POWER and e-4ORCE*. We are also committed to achieving carbon neutrality by 2050, reducing road deaths to zero and promoting diversity, equity and inclusion.

*e-POWER is a unique powertrain it is not a 100% electric vehicle and requires petrol to fuel the electric motor. Search Nissan e-POWER for more details.
*e-4ORCE all-wheel drive available on selected models and grades

DEFY ORDINARY

Why stick to the beaten path when you can forge your own? It's something we've always done and unites us with those who dare to be different. Those who refuse to settle for the status quo. It means we're continually creating radical new experiences, challenging conventional ways of thinking and shaking up worldviews. We're firm believers that real thrill happens when you take the plunge.

That's why we welcome boldness and fearlessly embrace the unexpected.

That's why we defy ordinary.





Defy Ordinary

Deep dive into the Nissan Juke experience: <https://www.nissan.co.uk/vehicles/new-vehicles/juke>
Follow Nissan JUKE on Facebook, Twitter and Youtube.

Every effort has been made to ensure that the content of this publication is correct at the time of going to press (April 2024). In accordance with the company's policy of continuously improving its products, Nissan Europe reserves the right to change at any time the specification and the vehicles described and shown in this publication. Nissan dealers will be informed of any such modifications as quickly as possible. Please check with your local Nissan dealer to receive the most up-to-date information. Because of the limitations of the printing processes used, the colours shown in this brochure may differ slightly from the actual colours of the paint and interior trim materials used. All rights reserved. Reproduction in whole or part of this brochure without the written permission of Nissan Europe is forbidden. This brochure is made from chlorine free paper - MV24 Juke brochure 04/2024 - Printed in EU. Created by DESIGNORY, France and produced by eg+ worldwide, France - Tel: +33 1 49 09 25 35.



NISSAN

JUKE



STANDARD EQUIPMENT

The Nissan Juke catches the eye from every angle. Its dynamic design and sporty styling make a powerful statement wherever it goes. Advanced technology - including ProPILOT Assist, Bose® Personal® Plus and NissanConnect - will help keep you safe, connected and entertained for thrilling urban adventures.

ALL JUKES COME WITH:

EXTERIOR STYLING

- Rear Spoiler

INTERIOR STYLING

- Monoform sporty seats
- Height adjustable driver seat
- Driver and passenger sun visor with vanity mirrors
- Welcome Light & Console Tray Ambient Lighting
- Cabin light Front and Rear
- Luggage space lighting
- 3 adjustable rear head restraints
- 60:40 split folding rear seats
- Front doors with bottle holders
- Two cupholders in the centre console

AUDIO AND NAVIGATION

- DAB Radio Bluetooth® connectivity, USB and AUX-IN ports

COMFORT AND CONVENIENCE

- Cruise Control & Speed Limiter
- Telescopic Steering wheel adjustment
- Multifunctional Steering wheel
- Front and rear electric windows with One Touch Driver window
- Outside temperature sensor
- Idle Stop/Start System
- Electrically adjustable Door Mirrors with integrated indicators
- Drive & passenger sliding and reclining seats
- Push-push fuel lid

SAFETY AND SECURITY

- Intelligent Emergency Braking with Pedestrian & Cyclist Recognition*
- Lane Departure Warning*
- Intelligent Lane Intervention*
- High Beam Assist*
- Traffic Sign Recognition*
- Automatic Hazard Signal + Emergency Stop signal
- Driver, passenger, side and curtain airbags

- Height adjustable seat belts
- Two rear ISOFIX childseat anchorage points with "Top tether"
- Tyre Pressure Monitoring System (TPMS)
- ABS with EBD and Brake Assist
- Vehicle Dynamic Control
- Electronic Stability Programme (ESP)
- Active Trace Control*
- Active Ride Control*
- Hill Start Assist
- Driver/Passenger & Rear seat belts reminder
- Puncture repair kit
- Emergency and Breakdown Call

VENTILATION AND VISIBILITY

- LED headlamps
- LED rear lamps
- LED Daytime Running Lights
- LED rear fog lamp
- Three Blink Turn Signal
- Follow me home headlights
- Manual air conditioning

ACENTA PREMIUM

IN ADDITION TO STANDARD EQUIPMENT

EXTERIOR STYLING

- 17" Sakura wheels
- Grained black plastic exterior door handles
- Exterior mirrors painted solid black
- Black shark fin antenna

INTERIOR STYLING

- Front monofrom sporty design seat with integrated headrest
- Black - cloth seats
- Synthetic Leather steering wheel

AUDIO AND NAVIGATION

- NissanConnect 12.3" Touchscreen Entertainment System
- Wireless Apple CarPlay® + Android Auto™

- 4 speakers (Front door x2, Rear doors x2)
- 7" Colour TFT Combimeter screen
- 4 USB ports (2x Front, 2x Rear)
- WiFi and Voice Recognition*

COMFORT AND CONVENIENCE

- Rear view camera
- Steering wheel mounted gearshift paddles (DCT transmission only)
- Electric hand brake with Auto Hold Function
- Start push button (Hybrid only)
- e-Pedal STEP (Hybrid only)
- EV mode switch (Hybrid only)
- Regenerative braking (Hybrid only)

SAFETY AND SECURITY

- Emergency and Breakdown Call

OPTIONS*

- Comfort Pack:
 - Automatic Climate Control
 - Rain sensing wipers
 - Heated Front seats
 - Heated & Auto-folding mirrors



* Options available at additional cost

N-CONNECTA

IN ADDITION TO ACENTA PREMIUM

EXTERIOR STYLING

- 17" Black & Diamond Cut Alloy Wheels
- Privacy Glass

INTERIOR STYLING

- Front Armrest
- Synthetic Leather Steering Wheel
- Leather Shift Knob
- Card holder on Driver Sun Visor
- Black Syntech Leather seats with Melange Fabric inserts
- Ambient Lighting
- Technical grain PVC dashboard
- Automatic dimming frameless interior rear view mirror

AUDIO AND NAVIGATION

- 6 speakers (Front doors x2, Front tweeters x2, Rear doors x2)
- 12.3" colour TFT Combimeter screen
- NissanConnect navigation with TomTom Traffic
- Wireless phone charger
- NissanConnect Services

COMFORT AND CONVENIENCE

- Front Parking sensors
- Rear parking sensors
- Luggage Board
- Heated & Auto-folding mirrors
- Start push button
- Intelligent Key with Walk Away Lock and Approach Unlock functions
- Drive Modes (Sport, Normal, Eco)

VENTILATION AND VISIBILITY

- Automatic Climate Control
- Rain sensing wipers
- Auto-dimming rear view mirror

OPTIONS**

- Heat Pack
 - Heated Front seats
 - Heated Steering wheel
 - ThermaClear® heated windscreen
 - Height adjustable passenger seat

- Advanced Safety Shield Pack* (Manual transmission only):
 - Intelligent Around View Monitor (360° colour camera)*
 - Intelligent Driver Alertness*
 - Blind Spot Intervention*
 - Rear Cross-Traffic alert*
 - Intelligent Cruise Control*
 - Moving Object Detection*
 - Lane Keep Assist*
- ProPILOT Assist Pack* (automatic transmission only):
 - Intelligent Around View Monitor (360° colour camera)*
 - Intelligent Driver Alertness*
 - Blind Spot Intervention*
 - Rear Cross-Traffic alert*
 - Intelligent Cruise Control*
 - Moving Object Detection*
 - Traffic Jam Pilot*
 - Lane Keep Assist*



* You should not rely solely on driver convenience features. Some features may not work in all conditions and circumstances. Speed and other limitations apply. For terms and conditions relating to Nissan technologies, please contact your Nissan dealer or www.nissan.co.uk

** Options available at additional cost

TEKNA

IN ADDITION TO N-CONNECTA

EXTERIOR STYLING

- 19" Alloy wheels

INTERIOR STYLING

- Synthetic leather seats with new Quilting and headrest hole gloss Black finisher
- Height adjustable passenger seat
- Gear Console Ambient Circle Lighting
- Door Ambient Lighting
- Driver Seat Back Pockets
- Passenger Seat Back Pockets

AUDIO AND NAVIGATION

- Bose® Personal® Plus Audio System: 10 Bose® Speakers (6 speakers and 2 headrest speakers for Driver & Passenger seats)

COMFORT AND CONVENIENCE

- Heated Front seats
- Heated Steering wheel
- ThermaClear® heated windscreen

SAFETY AND SECURITY

- Intelligent Around View Monitor (360° colour camera)*
- Intelligent Cruise Control*
- Lane Keep Assist*
- Intelligent Driver Alertness*
- Blind Spot Intervention*
- Rear Cross-Traffic alert*
- Moving Object Detection*
- Traffic Jam Pilot* (automatic transmissions only)

VENTILATION AND VISIBILITY

- LED Front Fog Lamps



*You should not rely solely on driver convenience features. Some features may not work in all conditions and circumstances. Speed and other limitations apply. For terms and conditions relating to Nissan technologies, please contact your Nissan dealer or www.nissan.co.uk

** Options available at additional cost

TEKNA+

IN ADDITION TO TEKNA

EXTERIOR STYLING

- 19" Alloy wheels with Deep 3D effect
- Two-Tone metallic paint
- Roof colour door mirrors
- Fuji Sunset Red, Solid Black or Blade Silver roof colour
- Exterior Personalisation Pack: Satin Grey inserts on front bumper, rear bumper and side skirts
- Satin silver front bumper finisher

INTERIOR STYLING

- Interior Personalisation Pack (seats, dashboard, door panels and armrest): "Midnight" (Black Synthetic Leather and Alcantara)



N-SPORT

IN ADDITION TO TEKNA

EXTERIOR STYLING

- 19" Black Akari Alloy wheels
- Two-tone metallic paint
- Roof colour door mirrors
- Solid Black or Blade Silver roof colour
- Exterior Personalisation Pack: Gloss Black inserts on front bumper, rear Bumper and side skirts
- Satin Silver front bumper finisher

INTERIOR STYLING

- Interior Personalisation Pack (seats, dashboard, door panels and armrest): "Icon" (Black Synthetic Leather and Yellow Alcantara)

OPTIONS*

- 19" Aero Alloy wheels (Hybrid only)



* Options available at additional cost

COLOURS

Pearlescent Paint



Fuji Sunset Red - **NBV**



Iconic Yellow - **ECE**



Pearl White - **QBE**



Pearl Black - **GAT**

Special Paint



Ceramic Grey - **KBY**



Burgundy - **NBQ**



Magnetic Blue - **RCF**

Metallic Paint



Blade Silver - **KYO**



Gun Metallic - **KAD**

Solid Paint



Flame Red - **Z10**



Arctic White - **326**

TWO TONE PAINT



SOLID BLACK ROOF

Available with:

- Pearl White - **XKJ**
- Ceramic Grey - **XEX**
- Blade Silver - **YAV**
- Magnetic Blue - **XGZ**
- Gun Metallic - **GAQ**
- Fuji Sunset Red - **YAU**
- Burgundy - **XDQ**
- Iconic Yellow - **YAS**



BLADE SILVER ROOF

Available with:

- Pearl Black - **YAY**
- Burgundy - **XEE**
- Fuji Sunset Red - **XEZ**



FUJI SUNSET RED ROOF

Available with:

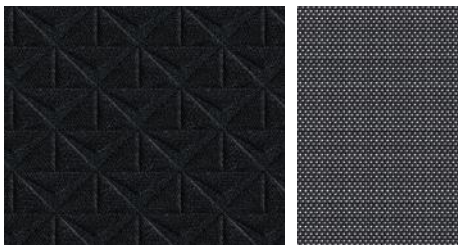
- Gun Metallic - **XFB**
- Pearl Black - **YAX**

TRIMS



ACENTA PREMIUM STANDARD

Black - Cloth Seats



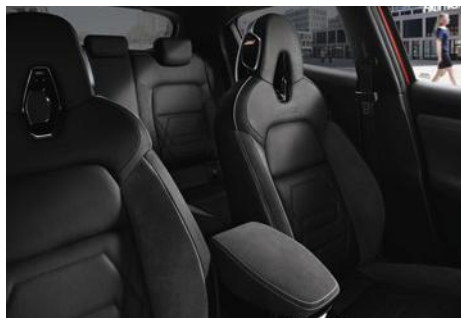
N-CONNECTA STANDARD

Black - Syntech Leather seats with Melange Fabric inserts



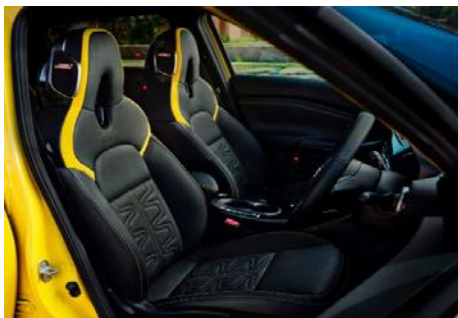
TEKNA STANDARD

Black - Synthetic Leather seats with quilting and headrest hole finisher



TEKNA+ INTERIOR PERSONALISATION PACK

Midnight Black Syntech Leather with Black Alcantara Inserts



N-SPORT INTERIOR PERSONALISATION PACK

Icon Black Technical Grain Leather with Yellow Alcantara and Yellow Stitching

WHEELS



17" Sakura wheels



17" Black & Diamond Cut Alloy wheels



19" Alloy wheels



19" Alloy wheels with Deep 3D effect



19" Aero Alloy wheels



19" Black Akari Alloy wheels

JUKE TECHNICAL SPECIFICATION

		1.0 DIG-t 114	1.0 DIG-t 114 DCT	Hybrid 143
MODEL		2WD Manual	2WD DCT	Hybrid
Available grades		Acenta Premium, N-Connecta, Tekna, Tekna+, N-Sport	Acenta Premium, N-Connecta, Tekna, Tekna+, N-Sport	Acenta Premium, N-Connecta, Tekna, Tekna+, N-Sport
Seating capacity	persons	5		

ENGINE				
Max. engine power	kW(PS)/rpm	84 (114)/5000		105 (69 ICE + 36 Electric Motor) (143 (94 ICE + 49 Electric Motor) / 5600
Max. torque	Nm/rpm	200/3000		148/3600
Fuel type		Unleaded Petrol		

DRIVE TRAIN				
Transmission type		6-speed manual	7-speed DCT	6-speed DCT (4 speed for ICE 2 speed for E-Motor)
Driven wheels		Front		

WHEELS				
Wheel size		Acenta Premium - 17" Sakura wheels, N-Connecta - 17" Alloy wheels, Tekna - 19" Alloy wheels, Tekna+ - 19" Alloy wheels with Deep 3D effect, N-Sport - 19" Black Akari Alloy wheels	Acenta Premium - 17" Sakura wheels, N-Connecta - 17" Alloy wheels, Tekna - 19" Alloy wheels, Tekna+ - 19" Alloy wheels with Deep 3D effect, N-Sport - 19" Black Akari Alloy wheels	Acenta Premium - 17" Sakura wheels, N-Connecta - 17" Alloy wheels, Tekna - 19" Alloy wheels, Tekna+ - 19" Aero Alloy wheels, N-Sport - 19" Black Akari Alloy wheels
Tyre size		Acenta Premium & N-Connecta - 215/60 R17, Tekna, Tekna+ & N-Sport - 225/45 R19	Acenta Premium & N-Connecta - 215/60 R17, Tekna, Tekna+ & N-Sport - 225/45 R19	Acenta Premium & N-Connecta - 215/60 R17, Tekna, Tekna+ & N-Sport - 225/45 R19
Spare Wheel Tyre Size		Puncture repair kit standard. Accessory spare wheel: 145/90 R16		

WEIGHTS & DIMENSIONS					
Gross Vehicle Weight		kg	1700	1725	1810
Max. pay load		kg	Acenta Premium - 426, N-Connecta - 415, Tekna - 403, Tekna+ - 409, N-Sport - 409	Acenta Premium - 426, N-Connecta - 416, Tekna - 404, Tekna+ - 409, N-Sport - 409	Acenta Premium - 404, N-Connecta - 394, Tekna - 381, Tekna+ - 387, N-Sport - 387
Max. trailer weight	braked	kg	1250	1250	750
	unbraked	kg	631	643	500
Overall length		mm	4210		
Overall width	excluding mirrors	mm	1800		
	including mirrors	mm	1983		
Overall height		mm	1593		
Turning circle	kerb to kerb	m	10.57		
Luggage space	max. length (rear seats up)	mm	757		
	max. length (rear seats down)	mm	1,477		
	min. width	mm	1,239		
Luggage capacity	VDA	l	422		354
	max. with folded seats to roof (VDA)	l	1,305		1,237

JUKE TECHNICAL SPECIFICATION

		DIG-T 114					DIG-T 114 DCT					Hybrid 143				
MODEL		Manual					Automatic					Hybrid				
Available grades		Acenta Premium	N-Connecta	Tekna	Tekna+	N-Sport	Acenta Premium	N-Connecta	Tekna	Tekna+	N-Sport	Acenta Premium	N-Connecta	Tekna	Tekna+	N-Sport

FUEL CONSUMPTION (WLTP)																
Combined	l/100km	5.8	5.9	5.9	5.9	5.9	6.0	6.1	6.1	6.2	6.2	4.8	4.8	4.9	4.8	4.9
	mpg	48.7	47.9	47.9	47.9	47.9	47.1	46.3	46.3	45.6	45.6	58.9	58.9	57.6	58.9	57.6
Low Phase	l/100km	6.9	6.9	6.9	6.9	6.9	7.5	7.5	7.6	7.6	7.6	4.7	4.7	4.8	4.8	4.8
	mpg	40.9	40.9	40.9	40.9	40.9	37.7	37.7	37.2	37.2	37.2	60.1	60.1	58.9	58.9	58.9
Medium Phase	l/100km	5.4	5.5	5.5	5.5	5.5	5.6	5.6	5.7	5.7	5.7	4.1	4.2	4.3	4.2	4.3
	mpg	52.3	51.4	51.4	51.4	51.4	50.4	50.4	49.6	49.6	49.6	68.9	67.3	65.7	67.3	65.7
High Phase	l/100km	5.1	5.1	5.1	5.1	5.1	5.1	5.1	5.2	5.2	5.2	4.3	4.3	4.3	4.3	4.3
	mpg	55.4	55.4	55.4	55.4	55.4	55.4	55.4	54.3	54.3	54.3	65.7	65.7	65.7	65.7	65.7
Extra-High Phase	l/100km	6.4	6.4	6.5	6.5	6.5	6.5	6.6	6.7	6.7	6.7	5.7	5.7	5.7	5.6	5.8
	mpg	44.1	44.1	43.5	43.5	43.5	43.5	42.8	42.2	42.2	42.2	49.6	49.6	49.6	50.4	48.7

EMISSIONS																
CO ₂ Combined (WLTP)	g/km	133	133	134	135	135	137	138	140	140	141	109	110	110	109	111
Emission Level		Euro6d Full														

PERFORMANCE																
Top Speed	mph	112										103				
Acceleration 0-62 mph (0-100Km/h)	secs	10.7					11.8					10.1				

WLTP figures shown are for comparability purposes; only compare figures with vehicles tested to the same technical procedures. Actual real-world driving results may vary depending on factors such as weather conditions, driving styles, vehicle load or any accessories fitted after registration.

PRICE LIST

GRADE	ENGINE	TRANSMISSION	BASIC PRICE £	VAT £	TOTAL RETAIL £	ON THE ROAD PRICE £	CO ₂	COMPANY CAR DRIVERS ^A			
								P11D VALUE £	BIK %	MONTHLY £ BIK AT 20%	MONTHLY £ BIK AT 40%
ACENTA PREMIUM	DIG-T 114	6 speed Manual	£19,312.50	£3,862.50	£23,175.00	£23,500.00	133	£23,175.00	31%	£121.42	£242.83
	DIG-T 114 DCT	7 speed DCT (Automatic)	£20,562.50	£4,112.50	£24,675.00	£25,000.00	137	£24,675.00	32%	£133.33	£266.67
	Hybrid 143	4 speed for ICE + 2 speed for E-Motor	£22,379.17	£4,475.83	£26,855.00	£27,095.00	109	£26,855.00	26%	£117.41	£234.82
N-CONNECTA	DIG-T 114	6 speed Manual	£20,979.17	£4,195.83	£25,175.00	£25,500.00	133	£25,175.00	31%	£131.75	£263.50
	DIG-T 114 DCT	7 speed DCT (Automatic)	£22,229.17	£4,445.83	£26,675.00	£27,000.00	138	£26,675.00	32%	£144.00	£288.00
	Hybrid 143	4 speed for ICE + 2 speed for E-Motor	£24,045.83	£4,809.17	£28,855.00	£29,095.00	110	£28,855.00	27%	£130.93	£261.86
TEKNA	DIG-T 114	6 speed Manual	£22,229.17	£4,445.83	£26,675.00	£27,000.00	134	£26,675.00	31%	£139.50	£279.00
	DIG-T 114 DCT	7 speed DCT (Automatic)	£23,479.17	£4,695.83	£28,175.00	£28,500.00	140	£28,175.00	33%	£156.75	£313.50
	Hybrid 143	4 speed for ICE + 2 speed for E-Motor	£25,295.83	£5,059.17	£30,355.00	£30,595.00	110	£30,355.00	27%	£137.68	£275.36
TEKNA+	DIG-T 114	6 speed Manual	£23,395.83	£4,679.17	£28,075.00	£28,400.00	135	£28,075.00	32%	£151.47	£302.93
	DIG-T 114 DCT	7 speed DCT (Automatic)	£24,645.83	£4,929.17	£29,575.00	£29,900.00	140	£29,575.00	33%	£164.45	£328.90
	Hybrid 143	4 speed for ICE + 2 speed for E-Motor	£26,462.50	£5,292.50	£31,755.00	£31,995.00	109	£31,755.00	26%	£138.65	£277.29
N-SPORT	DIG-T 114	6 speed Manual	£23,395.83	£4,679.17	£28,075.00	£28,400.00	135	£28,075.00	32%	£151.47	£302.93
	DIG-T 114 DCT	7 speed DCT (Automatic)	£24,645.83	£4,929.17	£29,575.00	£29,900.00	141	£29,575.00	33%	£164.45	£328.90
	Hybrid 143	4 speed for ICE + 2 speed for E-Motor	£26,441.67	£5,288.33	£31,730.00	£31,995.00	111	£31,730.00	27%	£143.98	£287.96

^ARepresentative examples only - subject to change.

DIMENSIONS

- A:** Wheelbase: 2,636mm
- B:** Overall length: 4,210mm
- C:** Overall width: 1,800mm
- D:** Overall height: 1,593
- Boot Capacity: 422 (Petrol)
- Boot Capacity: 354 (Hybrid)



OPTIONS

	ACENTA PREMIUM	N-CONNECTA	TEKNA	TEKNA+	N-SPORT	BASIC £	VAT £	TOTAL £
OPTIONS								
19" Aero Wheel (Hybrid Only)				●	○	£0	£0	£0
PACKS								
Comfort Pack	○	○	●	●	●	£291.67	£58.33	£350
Advanced Safety Shield Pack		○	●	●	●	£833.33	£166.67	£1,000
ProPilot Pack		○	●	●	●	£1,083.33	£216.67	£1,300
Heat Pack		○	●	●	●	£329.17	£65.83	£395
PAINT								
Solid Paint (Flame Red)	○	○	○			£0	£0	£0
Solid Paint (Arctic White)	○	○	○			£208.33	£41.67	£250
Metallic Paint	○	○	○			£520.83	£104.17	£625
Special/ Pearlescent Paint	○	○	○			£620.83	£124.17	£745
Two-Tone Metallic Paint		○	○			£854.17	£170.83	£1,025
Two-Tone Special/ Pearlescent Paint		○	○			£954.17	£190.83	£1,145
Two-Tone Metallic Paint				○	○	£0	£0	£0
Two-Tone Special/ Pearlescent Paint				○	○	£100	£20	£120

○ = Optional ● = Standard