



# The SEAT Ateca.

Pricing and specification list.



# Contents.

**03**

**Why easymove?**

**21**

**Option prices.**

**22**

**SEAT Connect.**

**11**

**Pick your engine.**

**14**

**Pick your colour.**

**15**

**Equipment.**

**23**

**Warranties &  
service plans.**

**26**

**Vehicle  
excise duty.**

**Benefit in  
kind tax.**

**27**

**Technical data.**



# Why **easy**move?

We've made it really simple to pick the SEAT Ateca that's right for you. There are six individual trims, each with their own unique equipment and appeal.

**1** Pick the trim that sounds like your kind of car.

**2** Choose the engine that suits you.

**3** Personalise your Ateca with your favourite colour.

**And that's it. It couldn't be easier to do your thing.**

Model shown: Ateca XPERIENCE LUX in Graphite Grey metallic paint.

**3** **The SEAT Ateca.** Pricing and specification list.



[Back](#) | [Forward](#) | [Contents](#)

# 1. Pick your trim.



01



03



05



02



04



06

01. **Ateca SE.**  
The Essential One.

02. **Ateca SE Technology.**  
The Connected One.

03. **Ateca FR.**  
The Stylish One.

04. **Ateca FR Sport.**  
The Sporty One.

05. **Ateca XPERIENCE.**  
The Indulgent One.

06. **Ateca XPERIENCE Lux.**  
The Luxury One



# Ateca SE.

## The Essential One.

**From £28,635\***

The Ateca SE has features to make every journey a great one, such as cruise control that makes long motorway drives a breeze, and Full Link technology which connects your smart phone calls, music and media to the car. Then there's front and rear parking sensors to make those tricky parking challenges a piece of cake.

### Key specifications for the SE trim

#### Wheels and tyres

- 17" 'Brilliant Silver' alloy wheels

#### Exterior equipment

- Metallic paint
- Roof rails (black)
- Wheel arch surrounds (black)

#### Infotainment

- Digital cockpit 8"
- Wired & Wireless smartphone integration
- Media system plus
  - 8.25" colour touchscreen with proximity sensor
  - AM/FM radio
  - DAB (Digital Audio Broadcasting)
  - Bluetooth® audio streaming and handsfree system

- SEAT Connect: Safety Service and Remote

- Safety and service: 10 year subscription included. Includes Emergency call, Breakdown call and Service scheduling
- Remote access: 10 year subscription included

#### Functional and mechanical

- Convenience pack
  - Auto-dimming rear view mirror
  - Auto-headlights with automatic coming & leaving home function
  - Rain-sensing wipers
- Cruise control
- Keyless entry
- Wireless phone charger
- Park assist: Self parking functionality (includes front and rear parking sensors)

#### Safety and security

- Front Assist including autonomous emergency braking (without adaptive cruise control)
- Hill hold control
- Safety & Driving Pack S
  - Attention and drowsiness Assist (ADA)
  - Tyre pressure warning light
  - Two reading lights front & two rear
  - Lane keeping system
  - Traffic sign recognition
  - Multifunction camera



Model shown: Ateca SE in Energy Blue non-metallic paint.



**01.** 17" 'Brilliant Silver' alloy wheels.

**02.** Comfort seats in cloth.

\*Price is for Ateca SE 1.0 TSI 115PS.

The SEAT Connect services can be operated only by using available public communication technologies. Please note that due to development of these technologies, especially mobile networks, SEAT cannot guarantee consistent availability in all countries for the duration of SEAT Connect services. Possible changes in technology may cause permanent unavailability of them.



# Ateca SE Technology.

## The Connected One.

**From £29,510\***

If staying connected is important to you, the Ateca SE Technology is the model that's full of features to make your day. With an 9.2" Navigation system, DAB radio and Wireless Full Link technology to connect with your smartphone's features, you're always in touch with the world around you. Plus, 18" 'Performance' machined alloy wheels and full LED headlights ensure you make a strong street statement.

### In addition to the SE trim

#### Wheels and tyres

- 18" 'Performance' machined alloy wheels in Nuclear Grey

#### Exterior equipment

- Roof rails (chrome)
- Window trim (chrome)

#### Infotainment

- Navigation system
  - 9.2" colour touchscreen with proximity sensor
  - AM/FM radio
  - 3D map display
  - High resolution colour driver's display
  - DAB (Digital Audio Broadcasting)
  - Voice control

- **SEAT Connect Plus:** Safety, Service, Remote & Online As per SEAT Connect: Safety, Service and Remote plus...
  - Online infotainment: 3 year subscription included:
    - Online map update
    - Online traffic information
    - Online route calculation
    - Parking and petrol stations

\*Price is for Ateca SE Technology 1.0 TSI 115PS.

**01.** 18" 'Performance' machined alloy wheels.

**02.** Comfort seats in cloth.

The SEAT Connect services can be operated only by using available public communication technologies. Please note that due to development of these technologies, especially mobile networks, SEAT cannot guarantee consistent availability in all countries for the duration of SEAT Connect services. Possible changes in technology may cause permanent unavailability of them.



Model shown: Ateca SE Technology in Graphite Grey metallic paint.





# Ateca FR.

## The Stylish One.

**From £32,430\***

Make a style statement with Dinamica upholstery, FR-styled double chrome exhausts and dark tinted rear windows, while standing out from the crowd in 18" 'Brilliant Silver' alloy wheels.

### In addition to the SE Technology trim

#### Wheels and tyres

- 18" 'Brilliant Silver' alloy wheels

#### Exterior equipment

- Dark tinted rear windows
- Roof rails (black)
- Rear spoiler
- Wheel arch surrounds (body coloured)
- Visible twin exhaust pipes<sup>1</sup>

#### Interior equipment

- Ambient lighting (multi-coloured) & LED interior illumination
- Aluminium pedals

#### Seats and trim

- Front comfort seats in Dinamica
- Illuminated aluminium front door sill

#### Functional and mechanical

- SEAT Drive profile with driving experience button (DSG engines only)<sup>2</sup>
  - Four different modes (Normal-Sport-Eco-Individual)
  - Steering and throttle response
  - Gear shifts mode (only DSG models)



Model shown: Ateca FR Sport in Velvet Red metallic paint.



\*Price is for Ateca FR 1.5 Eco TSI 150PS.

<sup>1</sup> SEAT drive profile with driving experience button is not available on 1.0 TSI engine or manual engines.

**01.** 18" 'Brilliant Silver' alloy wheels.

**02.** Black Dinamica comfort seats

# Ateca FR Sport.

## The Sporty One.

**From £34,975\***

When performance and road presence are your top priority, the FR Sport is the Ateca for you. 19" 'Exclusive' alloy wheels provide a confident stance, and the dark tinted rear windows complete the look. Inside you'll be cocooned by leather seats and a driver-focused digital cockpit.

### In addition to the FR trim

#### Wheels and tyres

- 19" 'Exclusive' machined alloy wheels with decorative inserts in Cosmo Grey

#### Infotainment

- Digital cockpit 10"

#### Seats and trim

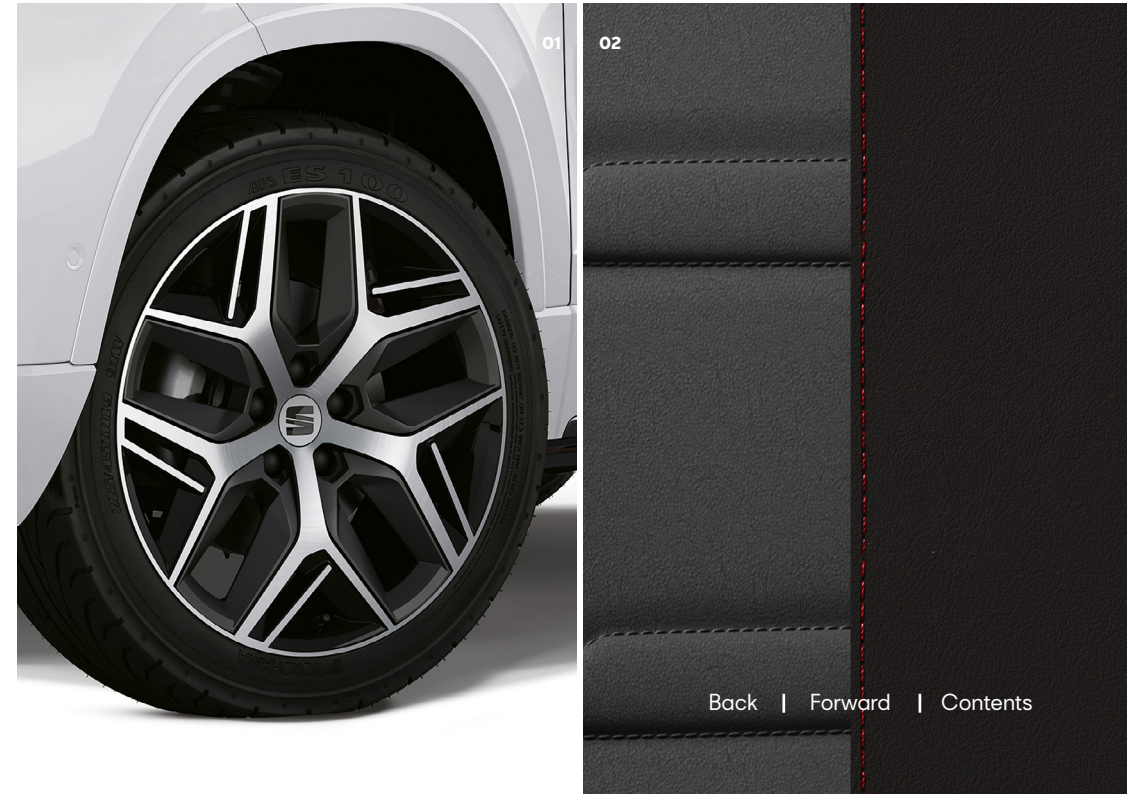
- Electric driver seat
- Front comfort seats in Leather upholstery<sup>1</sup>

#### Functional and mechanical

- Heated front seats



Model shown: Ateca FR in Nevada White metallic paint.



\*Price is for Ateca FR Sport 1.5 Eco TSI 150PS.

<sup>1</sup> Some parts in Simil leather.

**01.** 19" 'Exclusive' machined alloy wheels.

**02.** Black Leather comfort seats<sup>1</sup>.



# Ateca XPERIENCE.

## The Indulgent One.

**From £32,715\***

Indulge yourself with clever tech to turn a good day into a great one. Features like keyless entry, comfort seats, heat-reflecting windscreen, electric tailgate and Predictive Adaptive Cruise Control help every journey run smoothly.

### In addition to the SE Technology trim

#### Wheels and tyres

- 18" 'Brilliant Silver' alloy wheels

#### Exterior equipment

- Dark tinted rear windows

#### Interior equipment

- Ambient lighting (multi-coloured) & LED interior illumination

#### Seats and trim

- Front comfort seats in Dinamica
- Illuminated aluminium front door sill

#### Functional and mechanical

- Heat-reflecting windscreen
- Rear view camera
- Electric tailgate

- SEAT Drive profile with driving experience button<sup>1</sup>
  - Four different modes (Normal-Sport-Eco-Individual)
  - Steering and throttle response
  - Gear shifts mode [DSG engines only]

#### Safety and security (M)

- Safety and Driving Pack
  - Front assist including autonomous emergency braking
  - Predictive adaptive cruise control
- High beam control



Model shown: Ateca XPERIENCE in Black Magic metallic paint.



\*Price is for Ateca XPERIENCE 1.5 Eco TSI 150PS.

<sup>1</sup> SEAT drive profile with driving experience button is not available on 1.0 TSI engine or manual engines.

**01.** 18" 'Brilliant Silver' alloy wheels.

**02.** Black Dinamica comfort seats

# Ateca XPERIENCE Lux.

## The Luxury One.

**From £36,000\***

Every day is made even better with state-of-the-art tech and driving comforts you'll find in the XPERIENCE Lux. Precision parking is made simple with our innovative top view camera and park assist with self parking functionality. The digital cockpit gives you clear speed, tachometer and map information, while the heated leather seats mean you're even ready for the coldest months.

### In addition to the XPERIENCE trim

#### Wheels and tyres

- 19" 'Exclusive' machined alloy wheels in Nuclear Grey

#### Infotainment

- Digital cockpit 10"

#### Seats and trim

- Front comfort seats in Leather upholstery<sup>1</sup>

#### Functional and mechanical

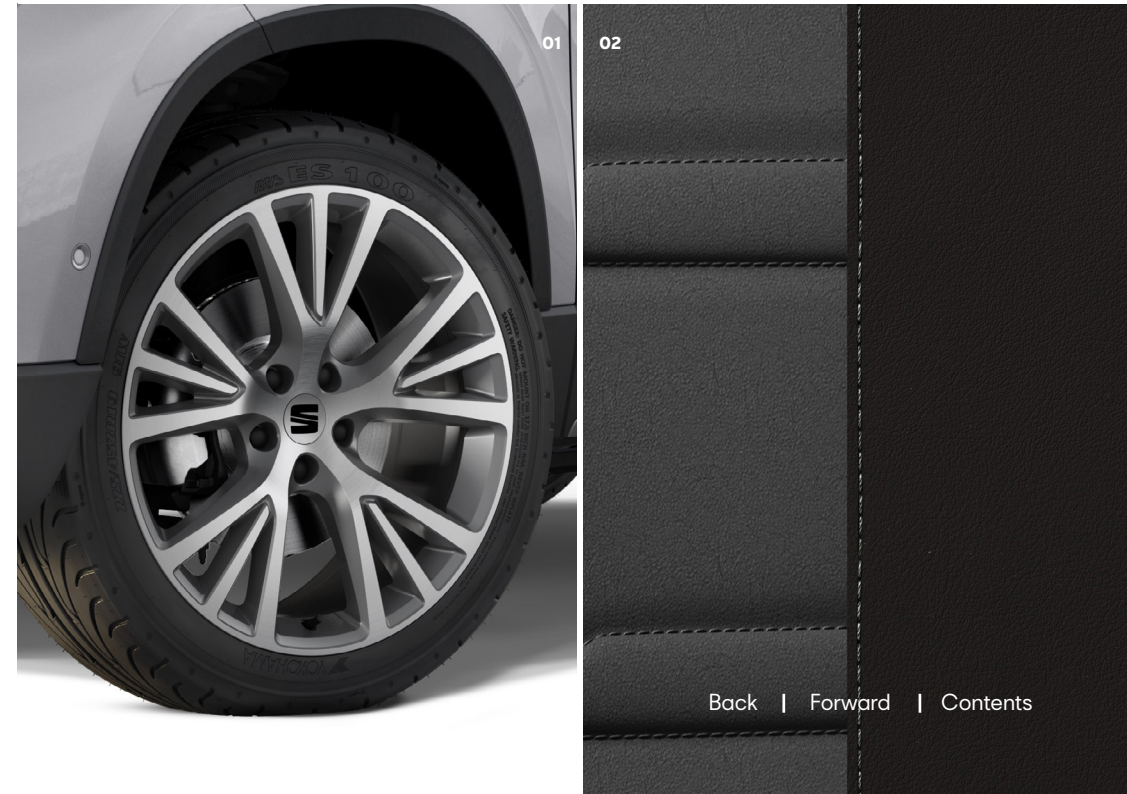
- Electric tailgate with virtual pedal
- Top view camera
- Heated front seats

#### Safety and security

- Side assist and exit assist
- Pre-crash assist



Model shown: Ateca XPERIENCE Lux in Reflex Silver metallic paint.



\*Price is for Ateca XPERIENCE Lux 1.5 Eco TSI 150PS.

<sup>1</sup> Some parts in Simil leather.

**01.** 19" 'Exclusive' machined alloy wheels.

**02.** Black Leather comfort seats<sup>1</sup>.



## 2. Pick your engine.

	Derivative	Fuel	WLTP CO <sub>2</sub> g/km	WLTP Combined mpg	Insurance group (1-50)	BIK 2024/25*	Basic price	VAT @ 20%	Retail price (P11D value)	1st Year RFL Rate 2024/25	1st Year Reg Fee 2024/25	Recommended On The Road Price
<b>SE</b>	1.0 TSI 115PS	P	137	44.1-47.1	13E	32%	£23,591.67	£4,718.33	£28,310.00	£270.00	£55.00	<b>£28,635.00</b>
	1.5 Eco TSI 150PS	P	141	40.4-45.6	18E	33%	£25,195.83	£5,039.17	£30,235.00	£270.00	£55.00	<b>£30,560.00</b>
	1.5 Eco TSI DSG-auto 150PS	P	145	39.8-44.1	18E	34%	£26,545.83	£5,309.17	£31,855.00	£270.00	£55.00	<b>£32,180.00</b>
<b>SE Technology</b>	1.0 TSI 115PS	P	144	44.1-44.8	13E	33%	£24,320.83	£4,864.17	£29,185.00	£270.00	£55.00	<b>£29,510.00</b>
	1.5 Eco TSI 150PS	P	148	40.4-43.5	18E	34%	£25,925.00	£5,185.00	£31,110.00	£270.00	£55.00	<b>£31,435.00</b>
	1.5 Eco TSI DSG-auto 150PS	P	151	39.8-42.8	18E	35%	£27,275.00	£5,455.00	£32,730.00	£680.00	£55.00	<b>£33,465.00</b>

\*BIK value is based on WLTP CO<sub>2</sub>'s and applicable from 18/09/2024.

The Recommended 'On The Road' price includes delivery charge to Retailer and number plates, one year's Road Fund Licence at the 1st year rate (£0 – £2,745 depending on the CO<sub>2</sub> output of the vehicle), and the new vehicle registration fee (£55). VAT is calculated at 20.0%. SEAT may change RRP's at any time (this includes where there are government changes in regulation and/or legislation). There may be a delay to any RRP displaying correctly on our materials. Always obtain prices from your chosen SEAT Retailer. Figures shown are for comparability purposes; only compare fuel consumption and CO<sub>2</sub> figures with other vehicles tested to the same technical procedures. These figures may not reflect real life driving results, which will depend upon a number of factors including the accessories fitted (post-registration), variations in weather, driving styles and vehicle load. Data correct at 18/09/2024.

## 2. Pick your engine.

	Derivative	Fuel	WLTP CO <sub>2</sub> g/km	WLTP Combined mpg	Insurance group (1-50)	BIK 2024/25*	Basic price	VAT @ 20%	Retail price (P11D value)	1st Year RFL Rate 2024/25	1st Year Reg Fee 2024/25	Recommended On The Road Price
<b>FR</b>	1.5 Eco TSI 150PS	P	148	40.4-43.5	18E	34%	£26,754.17	£5,350.83	£32,105.00	£270.00	£55.00	<b>£32,430.00</b>
	1.5 Eco TSI DSG-auto 150PS	P	150	39.8-42.8	18E	35%	£27,929.17	£5,585.83	£33,515.00	£270.00	£55.00	<b>£33,840.00</b>
<b>FR Sport</b>	1.5 Eco TSI 150PS	P	151	40.4-42.8	19E	35%	£28,533.33	£5,706.67	£34,240.00	£680.00	£55.00	<b>£34,975.00</b>
	1.5 Eco TSI DSG-auto 150PS	P	153	39.8-42.2	19E	35%	£29,708.33	£5,941.67	£35,650.00	£680.00	£55.00	<b>£36,385.00</b>

\*BIK value is based on WLTP CO<sub>2</sub>'s and applicable from 18/09/2024.

The Recommended 'On The Road' price includes delivery charge to Retailer and number plates, one year's Road Fund Licence at the 1st year rate (£0 – £2,745 depending on the CO<sub>2</sub> output of the vehicle), and the new vehicle registration fee (£55). VAT is calculated at 20.0%. SEAT may change RRP's at any time (this includes where there are government changes in regulation and/or legislation). There may be a delay to any RRP displaying correctly on our materials. Always obtain prices from your chosen SEAT Retailer. Figures shown are for comparability purposes; only compare fuel consumption and CO<sub>2</sub> figures with other vehicles tested to the same technical procedures. These figures may not reflect real life driving results, which will depend upon a number of factors including the accessories fitted (post-registration), variations in weather, driving styles and vehicle load. Data correct at 18/09/2024.



## 2. Pick your engine.

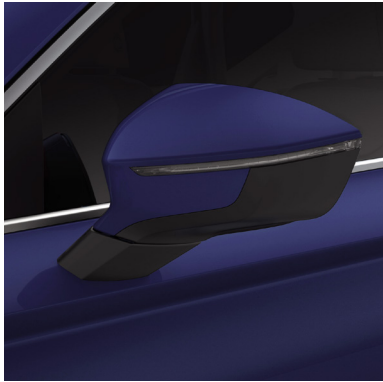
	Derivative	Fuel	WLTP CO <sub>2</sub> g/km	WLTP Combined mpg	Insurance group (1-50)	BIK 2024/25*	Basic price	VAT @ 20%	Retail price (P11D value)	1st Year RFL Rate 2024/25	1st Year Reg Fee 2024/25	Recommended On The Road Price
<b>XPERIENCE</b>	1.5 Eco TSI 150PS	P	149	40.4-43.5	18E	34%	£26,991.67	£5,398.33	£32,390.00	£270.00	£55.00	<b>£32,715.00</b>
	1.5 Eco TSI DSG-auto 150PS	P	151	39.8-42.8	18E	35%	£28,141.67	£5,628.33	£33,770.00	£680.00	£55.00	<b>£34,505.00</b>
<b>XPERIENCE Lux</b>	1.5 Eco TSI 150PS	P	151	40.4-42.8	19E	35%	£29,387.50	£5,877.50	£35,265.00	£680.00	£55.00	<b>£36,000.00</b>
	1.5 Eco TSI DSG-auto 150PS	P	153	39.8-42.2	19E	35%	£30,537.50	£6,107.50	£36,645.00	£680.00	£55.00	<b>£37,380.00</b>

\*BIK value is based on WLTP CO<sub>2</sub>'s and applicable from 18/09/2024.

The Recommended 'On The Road' price includes delivery charge to Retailer and number plates, one year's Road Fund Licence at the 1st year rate (£0 - £2,745 depending on the CO<sub>2</sub> output of the vehicle), and the new vehicle registration fee (£55). VAT is calculated at 20.0%. SEAT may change RRP's at any time (this includes where there are government changes in regulation and/or legislation). There may be a delay to any RRP displaying correctly on our materials. Always obtain prices from your chosen SEAT Retailer. Figures shown are for comparability purposes; only compare fuel consumption and CO<sub>2</sub> figures with other vehicles tested to the same technical procedures. These figures may not reflect real life driving results, which will depend upon a number of factors including the accessories fitted (post-registration), variations in weather, driving styles and vehicle load. Data correct at 18/09/2024.

# 3. Pick your colour.

Print and screen view do not provide an exact representation of colour.  
Please refer to the paint colour moulds at your local SEAT Retailer.



**Energy Blue<sup>1</sup>**

SE SE Tech XP XPL FR FRS



**Nevada White<sup>2</sup>**

SE SE Tech FR FRS XP XPL



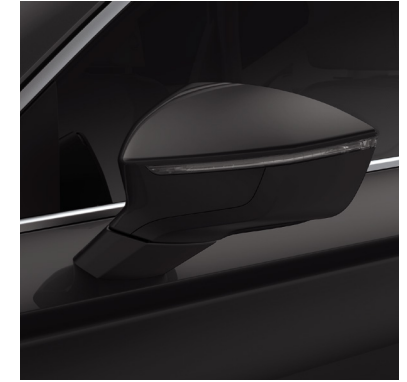
**Reflex Silver<sup>2</sup>**

SE SE Tech XP XPL



**Graphite Grey<sup>2</sup>**

SE SE Tech FR FRS XP XPL



**Black Magic<sup>2</sup>**

SE SE Tech FR FRS XP XPL



**Velvet Red<sup>2</sup>**

SE SE Tech FR FRS XP XPL

SE SE SE Tech SE Technology FR FR FRS FR Sport XP XPERIENCE XPL XPERIENCE Lux <sup>1</sup>Non-metallic <sup>2</sup>Metallic



# Equipment.

■ Standard – Not available

	SE	SE Technology	FR	FR Sport	XPERIENCE	XPERIENCE Lux
<b>Wheels and tyres</b>						
17" 'Brilliant Silver' alloy wheels with 215/55 R17 94V super-low rolling resistance tyres	■	-	-	-	-	-
18" 'Brilliant Silver' alloy wheels with 215/50 R18 92W tyres	-	-	-	-	■	-
18" 'Performance' machined alloy wheels 36/2 in Nuclear Grey with 215/50 R18 92W tyres	-	■	-	-	-	-
18" 'Brilliant Silver' alloy wheels with 215/50 R18 92W tyres	-	-	■	-	-	-
19" 'Exclusive' machined alloy wheels 36/4 in Nuclear Grey with 235/40 R19 96Y tyres	-	-	-	-	-	■
19" 'Exclusive' machined alloy wheels with decorative inserts 36/7 in Cosmo Grey with 235/40 R19 96Y tyres	-	-	-	■	-	-

# Equipment.

■ Standard – Not available

	SE	SE Technology	FR	FR Sport	XPERIENCE	XPERIENCE Lux
<b>Exterior equipment</b>						
Dark tinted rear windows	-	-	■	■	■	■
Door mirrors (electrically adjustable, folding and heated)	■	■	■	■	■	■
Dynamic headlight range control with self-adjustment whilst driving	■	■	■	■	■	■
Daytime running lights	■	■	■	■	■	■
Front grille frame in chrome	■	■	■	■	■	■
LED headlamps with lens and LED front fog lamps with cornering function	■	■	■	■	■	■
LED rear taillights (FR & XPERIENCE trims with dynamic indicators)	■	■	■	■	■	■
Rear exhaust tailpipe	■	■	■	■	■	■
Metallic paint	■	■	■	■	■	■
Front LED fog light	■	■	■	■	■	■
Rear spoiler	-	-	■	■	-	-
Roof rails (black)	■	-	■	■	-	-
Roof rails (chrome)	-	■	-	-	■	■
Wheel arch surrounds (black)	■	■	-	-	■	■
Wheel arch surrounds (body coloured)	-	-	■	■	-	-
Window trim (black)	■	-	■	■	-	-
Window trim (chrome)	-	■	-	-	■	■



# Equipment.

■ Standard – Not available

	SE	SE Technology	FR	FR Sport	XPERIENCE	XPERIENCE Lux
<b>Infotainment</b>						
Digital cockpit 8"	■	■	■	-	■	-
Digital cockpit 10"	-	-	-	■	-	■
Wired & wireless Full Link smartphone integration	■	■	■	■	■	■
<b>Media system plus:</b> 8.25" colour touchscreen with proximity sensor, AM/FM Radio, DAB (Digital Audio Broadcasting), Eight speakers, Bluetooth® audio streaming and handsfree system, Two front illuminated USB Type C and two rear USB Type C ports	■	-	-	-	-	-
<b>Navigation system:</b> 9.2" colour touchscreen with proximity sensor, Two front illuminated USB (type C) and two rear USB (type C), AM/FM Radio, 3D map display, High resolution colour driver's display, DAB (Digital Audio Broadcasting), Voice control	-	■	■	■	■	■
<b>SEAT Connect: Safety, Service and Remote:</b> Safety & Service: 10 year subscription included: Emergency call, Breakdown call, Service scheduling, Remote Access: 10 year subscription included: Driving data, Parking position, Remote lock and unlock, Anti-theft/area/speed alert	■	-	-	-	-	-
<b>SEAT Connect Plus: Safety, Service, Remote &amp; Online:</b> As per SEAT Connect: Safety, Service and Remote plus.... Online infotainment: 3 year subscription included: Online map update, Online traffic information, Online route calculation, Parking and petrol stations	-	■	■	■	■	■
<b>Interior equipment</b>						
Aluminium pedals	-	-	■	■	-	-
Ambient lighting (multi-coloured) & LED interior illumination	-	-	■	■	■	■
<b>Interior lighting:</b> Front courtesy light with front and rear reading lights, Ambient spot lighting with front footwell illumination	■	■	■	■	■	■
Drawer under right front seat	■	■	■	-	■	■

# Equipment.

■ Standard – Not available

	SE	SE Technology	FR	FR Sport	XPERIENCE	XPERIENCE Lux
<b>Seats and trim</b>						
Driver and passenger seats, manual height and lumbar adjustment	■	■	■	■	■	■
Electric driver seat with memory function	-	-	-	■	-	-
Front centre armrest	■	■	■	■	■	■
Front seat with back storage pockets	■	■	■	■	■	■
Front comfort seats in cloth	■	■	-	-	-	-
Comfort sport seats in black Dinamica	-	-	■	-	■	-
Comfort sport seats in black leather	-	-	-	■	-	■
Illuminated aluminium front door sill	-	-	■	■	■	■
Interior detailing (chrome)	■	■	■	■	■	■
Leather sports steering wheel and vegan leather gear knob <sup>1</sup>	■	■	■	■	■	■
Split folding rear seats (60/40)	■	■	■	■	■	■

<sup>1</sup> Vegan leather available for manual engines. Leather gearshift knob for automatic engines.



# Equipment.

■ Standard – Not available

	SE	SE Technology	FR	FR Sport	XPERIENCE	XPERIENCE Lux
<b>Functional and mechanical</b>						
12v socket in front	■	■	■	■	■	■
Heat-reflecting windscreen	-	-	-	-	■	■
Cruise control system with speed limiter	■	■	■	■	■	■
<b>Convenience pack:</b> Auto-dimming rear view mirror, auto-headlights with automatic coming & leaving home function, rain-sensing wipers	■	■	■	■	■	■
Dual-zone climate control	■	■	■	■	■	■
Electric front and rear windows	■	■	■	■	■	■
Electric parking brake including Autohold function	■	■	■	■	■	■
Electric tailgate ( <b>with virtual pedal for XPERIENCE Lux</b> )	-	-	-	-	■	■
Heated front seats	-	-	-	■	-	■
Wireless phone charger	■	■	■	■	■	■
<b>Park assist:</b> Self parking functionality (includes front and rear parking sensors)	■	■	■	■	■	■
Rear view camera	-	-	-	-	■	■
Top view camera	-	-	-	-	-	■
<b>SEAT drive profile with driving experience button<sup>1</sup>:</b> Four different modes (Normal-Sport-Eco-Individual), ECO function, Steering & throttle response, Gear shifts mode (only DSG models)	■	■	■	■	■	■
Steering wheel-mounted gearshift paddles (DSG models only)	■	■	■	■	■	■

<sup>1</sup>SEAT drive profile with driving experience button not available on SE and SE Technology manual engines.

# Equipment.

■ Standard – Not available

	SE	SE Technology	FR	FR Sport	XPERIENCE	XPERIENCE Lux
<b>Safety and security</b>						
ABS, Traction Control System (TCS), Electronic Stability Control (ESC), Electronic differential lock system (XDS)	■	■	■	■	■	■
Alarm	■	■	■	■	■	■
Keyless entry	■	■	■	■	■	■
Driver and front passenger airbags with front passenger airbag deactivation, front side airbags, two curtain airbags, driver's knee airbag	■	■	■	■	■	■
Front and rear seat belt reminders	■	■	■	■	■	■
Front Assist including autonomous emergency braking (without adaptive cruise control)	■	■	■	■	-	-
<b>Safety &amp; Driving Pack (S):</b> Attention and drowsiness Assist (ADA), Tyre pressure warning light, Two reading lights front & two rear, Lane keeping system, Traffic sign recognition, Multifunction camera	■	■	■	■	■	■
<b>Safe &amp; Driving Pack (M):</b> Front assist including autonomous emergency braking, Predictive adaptive cruise control, Lane assist, Traffic sign recognition, High beam control	-	-	-	-	■	■
Side assist and exit assist	-	-	-	-	-	■
Hill hold control	■	■	■	■	■	■
ISOFIX points in outer rear seats with top tether anchorage points	■	■	■	■	■	■
Locking wheel bolts	■	■	■	■	■	■



# Option prices.

Optional – Not available

	SE	SE Technology	FR	FR Sport	XPERIENCE	XPERIENCE Lux	Basic price	VAT @ 20%	Recommended retail price
<b>Wheels and tyres</b>									
Space saver spare wheel (in lieu of standard tyre repair kit)	<input type="checkbox"/>	<input type="checkbox"/>	<input type="checkbox"/>	<input type="checkbox"/>	<input type="checkbox"/>	<input type="checkbox"/>	£112.50	£22.50	£135.00
<b>Exterior equipment</b>									
Towbar pre-installation	<input type="checkbox"/>	<input type="checkbox"/>	<input type="checkbox"/>	<input type="checkbox"/>	<input type="checkbox"/>	<input type="checkbox"/>	£125.00	£25.00	£150.00
Towbar pre-installation with hook	<input type="checkbox"/>	<input type="checkbox"/>	<input type="checkbox"/>	<input type="checkbox"/>	<input type="checkbox"/>	<input type="checkbox"/>	£675.00	£135.00	£810.00
<b>Panoramic sunroof:</b> Includes advanced multi-colour interior ambient lighting with LED interior illumination and LED illuminated glovebox (removes glasses storage compartment in roof console)	-	-	<input type="checkbox"/>	<input type="checkbox"/>	<input type="checkbox"/>	<input type="checkbox"/>	£1,008.33	£201.67	£1,210.00
<b>Panoramic sunroof:</b> Includes advanced multi-colour interior ambient lighting with LED interior illumination and LED illuminated glovebox (removes glasses storage compartment in roof console)	<input type="checkbox"/>	<input type="checkbox"/>	-	-	-	-	£1,183.33	£236.67	£1,420.00
<b>Functional and mechanical</b>									
Boot divider net	<input type="checkbox"/>	<input type="checkbox"/>	<input type="checkbox"/>	<input type="checkbox"/>	<input type="checkbox"/>	<input type="checkbox"/>	£162.50	£32.50	£195.00

# SEAT CONNECT

Get the most out of your new SEAT by downloading the MySEAT app. SEAT CONNECT's innovative services and functions connect you with your SEAT and the world. For instance, you can check if all your car's doors are locked from wherever you are, or you can see where exactly you've parked your SEAT. Thanks to SEAT CONNECT services, you can feel safer and more relaxed behind the wheel. The app lets you to connect your phone to your SEAT and allows you to seamlessly access crucial driving data and information about your vehicle.

Online traffic information ensures you receive up-to-date traffic conditions, keeping you informed and ensuring you avoid traffic delays and take the most optimum route wherever possible. By pressing the breakdown call button in the car or via the phone screen in the infotainment system, the most important information is shared with Roadside Assistance, such as your GPS coordinates and vehicle data, such as warning lights. SEAT Connect ensures you always receive the latest updates to your infotainment system, the updates are done over-the-air, this ensures you always obtain the latest improved features with no need for a workshop visit.

SEAT CONNECT			SEAT CONNECT PLUS
Free for 10 Years			3 Years Free Trial
Standard SEAT CONNECT enables access to multiple features and benefits including:			
<b>Vehicle Status</b> <ul style="list-style-type: none"> <li>• Driving Data</li> <li>• Vehicle Health Report</li> </ul>	<b>Streaming</b> <ul style="list-style-type: none"> <li>• Internet Radio</li> </ul>	<b>E-Hybrid**</b> <ul style="list-style-type: none"> <li>• E-Manager</li> <li>• Departure Times</li> <li>• Remote Battery Charge</li> <li>• Battery Care Mode</li> <li>• Remote Climatization</li> </ul>	<ul style="list-style-type: none"> <li>• Online Traffic Information</li> <li>• Local Hazard Information</li> <li>• Online Route Calculation</li> <li>• Dynamic POI's (Petrol + Charging + Parking Information)</li> </ul>
<b>Comfort</b> <ul style="list-style-type: none"> <li>• Parking Position</li> <li>• Personalisation</li> </ul>	<b>Safe and Secure</b> <ul style="list-style-type: none"> <li>• Service Scheduling</li> <li>• Customer Care</li> <li>• Breakdown Call</li> </ul>		
<b>Remote and Control</b> <ul style="list-style-type: none"> <li>• Horn and Turn Signals</li> <li>• Anti-Theft Alert</li> <li>• Remote Lock and Unlock</li> <li>• Remote Auxiliary Heater*</li> </ul>	<b>Navigation</b> <ul style="list-style-type: none"> <li>• Online POI search</li> <li>• Online Destination Import</li> <li>• Online Route Import</li> <li>• Online Maps Update</li> </ul>		

\*Functionality only available for Leon and Ateca.

\*\*Features only available on e-hybrid/PHEV models.

Please note: The availability of SEAT CONNECT services may vary depending on your vehicle and vehicle equipment.

**22 The SEAT Ateca.** Pricing and specification list.



# Warranties, service plans and insurance.

Optional

Extended Warranties	All trims	Basic price	VAT @ 20%	Recommended retail price	
When you buy a new SEAT it is covered by a 3 year/60,000 miles manufacturer warranty. You can extend this cover, with a 4 year/75,000 miles or 5 year/90,000 miles SEAT Extended Manufacturer Warranty, and get the same level of cover. It is fully transferable to a new owner if you decided to sell your SEAT.	4 years/75,000 miles	<input type="checkbox"/>	<b>£270.83</b>	<b>£54.17</b>	<b>£325.00</b>
<b>Please note: The SEAT Extended Manufacturer Warranty is only available at the time of ordering a new SEAT.</b>	5 years/90,000 miles	<input type="checkbox"/>	<b>£416.67</b>	<b>£83.33</b>	<b>£500.00</b>

**Extended Warranty for existing owners:** If your existing warranty is about to expire, or if you haven't already got one in place, our Extended Warranty\* is designed to protect you. For a quote, visit [insurewithseat.co.uk](https://insurewithseat.co.uk)

\*SEAT Financial Services is a trading name of Volkswagen Financial Services (UK) Limited. SEAT Extended Warranty is sold and administered by Lawshield UK Limited and underwritten by AWP P&C SA. Terms, conditions and eligibility criteria apply.

Service plan	All trims	Upfront payment	or	Monthly cost
New Fixed Price Service Plans are available for cars up to 12 months. You always know where you are with our fixed price plans which are inflation proof. Available at participating SEAT Retailers. <b>Go to <a href="https://seat.co.uk/bookservice">seat.co.uk/bookservice</a>.</b> Includes 1st and 2nd service	Vehicle Aged 0 - 30 days	<input type="checkbox"/>	<b>£199.00</b>	<b>£8.29</b>
	Vehicles Aged from 31 days up to 12 months	<input type="checkbox"/>	<b>£492.00</b>	<b>24 monthly payments of £20.50</b>

## The SEAT Warranty

### Three-year Warranty.

All new SEAT's registered in the UK come with a three year/60,000 miles warranty, which protects your car against the failure of most mechanical and electrical components due to manufacturing defects. This comprises a two-year manufacturer's warranty with unlimited mileage plus a further one-year/60,000 [whichever is soonest].

### Retailer Warranty.

Should the mileage exceed 60,000 miles within the first two years, the manufacturer's two-year warranty will still be valid. If an additional warranty for subsequent years or higher mileage is desired, it may be purchased from an authorised SEAT Retailer or repairer, however, this additional warranty must be purchased before the mileage reaches 60,000. Cover is subject to the car being serviced and maintained according to the manufacturer's technical guidelines.

Full details of the three-year warranty are available from your SEAT Retailer or repairer.



# Warranties, service plans and insurance.

## SEAT Extended Manufacturer Warranty

If you take out a SEAT Extended Manufacturer Warranty before your new car is registered, you'll get exactly the same level of cover as the three year warranty, but for up to five years. You can choose a SEAT Extended Manufacturer Warranty to last until the end of the 4th year/up to 75,000 miles or until the end of the 5th year/up to 90,000 miles (whichever is soonest). Please note: SEAT Extended Manufacturer Warranty products are only available at the time of ordering your new SEAT.

## Three-year Paint Warranty

The paintwork of all models featured in this price list is covered against manufacturing defects for a period of three years. Naturally, the vehicle must be cared for in compliance with the operating instructions which will be found in your vehicle handbook. Please consult your authorised SEAT Retailer or repairer for full warranty details.

## Twelve-year Body Protection Warranty

The internal body sections and panels of the models featured in this price list are covered against rusting through from the outside for twelve years. Naturally, the vehicle must be cared for in compliance with the operating instructions which will be found in your vehicle handbook. Please consult your authorised SEAT Retailer or repairer for full warranty details.

## SEAT Parts Warranty

SEAT parts and accessories supplied after new vehicle delivery are covered by our 24 months parts warranty.

## SEAT Car Insurance

### Complimentary Drive Away cover\*

Every new and Approved Used SEAT comes with five days' complimentary insurance cover, getting you on the road quickly and easily so you can simply enjoy the drive. SEAT Drive Away Insurance is designed specifically for your SEAT and guarantees that your car will be repaired in a SEAT Approved Repairer. Speak to your SEAT Retailer for more details.

Subject to eligibility.

We will also provide you with an annual quote, with no additional questions asked, so you can continue to enjoy all the benefits SEAT Car Insurance offers.

Read on for more details.

## Annual Car Insurance\*

SEAT Car Insurance offers quality service and support when you need it most, with a policy tailored specifically for your SEAT. Just as you'd expect from SEAT, our annual car insurance provides comprehensive cover, with lots of benefits included at no extra cost.

Insure your car with SEAT and relax knowing we only use SEAT trained technicians, who know your car inside out, and SEAT genuine parts<sup>†</sup>, giving you the peace of mind that your SEAT will be repaired to the same high standards as before and to original manufacturer specifications.

<sup>†</sup>Excludes windscreen claims.

Get a quote or find out more at

**[insurewithseat.co.uk/car-insurance](https://insurewithseat.co.uk/car-insurance)**

Alternatively, call us on **0345 877 6555**.

Lines are open 8am-8pm Monday to Friday and 9am-5pm Saturday.

\*SEAT Car Insurance is provided and underwritten by U K Insurance Limited. Calls may be recorded. SEAT Financial Services is a trading name of Volkswagen Financial Services (UK) Limited ("VWFS UK"), registered in England and Wales No.2835230 (registered office: Brunswick Court, Yeomans Drive, Blakelands, Milton Keynes MK14 5LR). Until 31st October 2022 Volkswagen Insurance Service (Great Britain) Ltd operates as an appointed representative of VWFS UK, after this date all references to Volkswagen Insurance Service (Great Britain) Ltd should instead be read as VWFS UK. VWFS UK is authorised and regulated by the Financial Conduct Authority. VWFS UK and U K Insurance Limited are not part of the same corporate.

# Warranties, service plans and insurance.

## **SEAT Gap Insurance**

If your SEAT is written off, your motor insurer will usually pay out based on the current market value of your vehicle. This could be a lot less than its original value and therefore may leave you with an unexpected shortfall. Our Gap Insurance helps to cover the gap left by this shortfall to get you back in a new SEAT or help pay off any outstanding finance, lease or hire agreement. SEAT Gap Insurance can be purchased up to 100 days after you have collected your new or used vehicle.

For more information, visit

**[insurewithseat.co.uk/gap-insurance](https://insurewithseat.co.uk/gap-insurance)**

or visit your local participating SEAT Retailer.

SEAT Gap Insurance is administered by Car Care Plan Limited and underwritten by Motors Insurance Company Limited.

## **SEAT Roadside Assistance (including European cover)**

Any new SEAT purchased and registered in the UK from an authorised SEAT Retailer, is covered free by SEAT Assistance (including European cover) for roadside repairs or recovery to an authorised repairer for a term of two years. Terms and conditions apply.

## **Specifications**

Specifications refer to Model Year 2025. While SEAT makes every effort to make sure that specifications are accurate at the time of publication (09/2024), you should always check details with your SEAT Retailer as there may have been changes in view of SEAT's policy of continuous product improvement. The right is reserved to change specification and colour at any time. The information in this price list can therefore be given as guidance only.

\*SEAT Car Insurance is provided and underwritten by U K Insurance Limited. Calls may be recorded. SEAT Financial Services is a trading name of Volkswagen Financial Services (UK) Limited ("VWFS UK"), registered in England and Wales No.2835230 (registered office: Brunswick Court, Yeomans Drive, Blakelands, Milton Keynes MK14 5LR). Until 31st October 2022 Volkswagen Insurance Service (Great Britain) Ltd operates as an appointed representative of VWFS UK, after this date all references to Volkswagen Insurance Service (Great Britain) Ltd should instead be read as VWFS UK. VWFS UK is authorised and regulated by the Financial Conduct Authority. VWFS UK and U K Insurance Limited are not part of the same corporate.

# Vehicle excise duty.

All new vehicles are subject to a form of Vehicle Excise Duty (VED) based on the type of fuel the vehicle uses and its carbon dioxide (CO<sub>2</sub>) emission level, measured in grammes per kilometre (g/km). The table below illustrates the duty you will pay based on the DVLA bandings.

## 12-month Road Fund Licence (RFL) rate for petrol and diesel cars: Cars registered on or after 1 April 2024

CO <sub>2</sub> g/km	1st year rate – Petrol / Diesel	1st year rate – Alternative Fuel Vehicles (AFVs)
0	£0	£0
1	£10	£0
51	£30	£20
76	£135	£125
91	£175	£165
101	£195	£185
111	£220	£210
131	£270	£260
151	£680	£670
171	£1,095	£1,085
191	£1,650	£1,640
226	£2,340	£2,330
256	£2,745	£2,735

The standard rate for Petrol and Diesel is £190 and £180 for Alternative Fuel Vehicles. Please be aware vehicles with a list price (RRP), including options, higher than £40,000 will incur an additional £410 a year in vehicle tax, from the second time the vehicle is taxed.

For full details please refer to [gov.uk/vehicle-tax-rate-tables](https://gov.uk/vehicle-tax-rate-tables)

# Benefit in kind tax.

## How to calculate your liability

The BIK percentage value is based on the CO<sub>2</sub> emissions of the vehicle for the current tax year 2024/25.

### BIK calculation example: Ateca SE 1.0 TSI 115PS

P11D value (OTR price less RFL and first registration fee) £28,310.00

WLTP CO<sub>2</sub> emissions (g/km) 137

Company car BIK tax based on CO<sub>2</sub> emission level 32%

Taxable BIK (for 2024/25 tax year):  
32% of £28,310.00 £9,059.20

### Annual Company Car Tax 2024/25 (@20% Income Tax)

20% of £9,059.20 £1,811.84 per annum

### Monthly Company Car Tax 2024/25 (@20% Income Tax)

£1,811.84 divided by 12 £150.99 per month

# Technical data.

	1.0 TSI 115PS	1.5 Eco TSI 150PS	1.5 Eco TSI DSG-auto 150PS
<b>Engine</b>			
Type (cylinders / valves per cylinder)	3 / 4	4 / 4	4 / 4
Displacement (cc)	999	1498	1498
Bore and stroke (mm)	74.5 x 76.4	74.5 x 85.9	74.5 x 85.9
Compression ratio	11.5	12.0	12.0
Maximum power (PS / kW / rpm) <sup>1</sup>	115 (85) / 5500	150 (110) / 5000-6000	150 (110) / 5000-6000
Maximum torque (Nm / lb.ft / rpm)	200 / 2000-3500	250 / 1500-3500	250 / 1500-3500
Fuel supply system	TSI Direct injection	TSI Direct injection	TSI Direct Injection
Fuel type	Unleaded petrol	Unleaded petrol	Unleaded petrol
Emission control	RDE 2	RDE 2	RDE 2
Start/stop system	Yes	Yes	Yes
<b>Performance</b>			
Maximum speed (km/h)	183	202	202
Maximum speed (mph) <sup>2</sup>	114	126	126
Acceleration 0-62mph (s)	11.0	9.0	9.0
<b>Fuel consumption<sup>3</sup> (WLTP)</b>			
Combined mpg range	44.1-47.1	40.4-45.6	39.8-44.1

1. The maximum power output figures are quoted in PS (or Pferdestärke, which is the metric equivalent of horsepower). To convert from metric to imperial horsepower, divide the PS by 1.0139.

2. Where law permits.

3. Figures shown are for comparability purposes; only compare fuel consumption and CO<sub>2</sub> figures with other vehicles tested to the same technical procedures. These figures may not reflect real life driving results, which will depend upon a number of factors including the accessories fitted (post-registration), variations in weather, driving styles and vehicle load. Data correct at 18/09/2024.



# Technical data.

	1.0 TSI 115PS	1.5 Eco TSI 150PS	1.5 Eco TSI DSG-auto 150PS
<b>Trim &amp; emission (WLTP) CO<sub>2</sub> (g/km)</b>			
SE	137	141	145
SE Technology	144	148	151
FR	-	148	150
FR Sport	-	151	153
XPERIENCE	-	149	151
XPERIENCE Lux	-	151	153
<b>Transmission</b>			
Gearbox type	6-speed manual	6-speed manual	7-speed automatic
<b>Chassis</b>			
Front suspension	Independent type McPherson, coil springs, hydraulic shock absorber		
Rear suspension	Semi-rigid axle, coil springs and hydraulic shock absorber		
Steering system	R-EPS (Rack Electric Power System); in Xcellence and FR: Progressive steering		
Turning circle diameter [wall to wall] (m)	10.8	10.8	10.8
<b>Braking system</b>			
Anti-lock Braking System (ABS)	Dual hydraulic circuit and brake system diagonal split with brake booster		
Type (front/rear)	Front ventilated disk brakes / Rear solid disc brakes		
Front discs (mm)	288 x 25	288 x 25 (versions w.DCC or 19" wheels 312 x 25)	288 x 25 (versions w.DCC or 19" wheels 312 x 25)
Rear discs (mm)	272 x 10	272 x 10	272 x 10

## AdBlue®.

The use of AdBlue® helps the environment by reducing the number of harmful emissions created by diesel engines.

# Technical data.

## 1.0 TSI 110PS

## 1.5 Eco TSI 150PS

## 1.5 Eco TSI DSG-auto 150PS

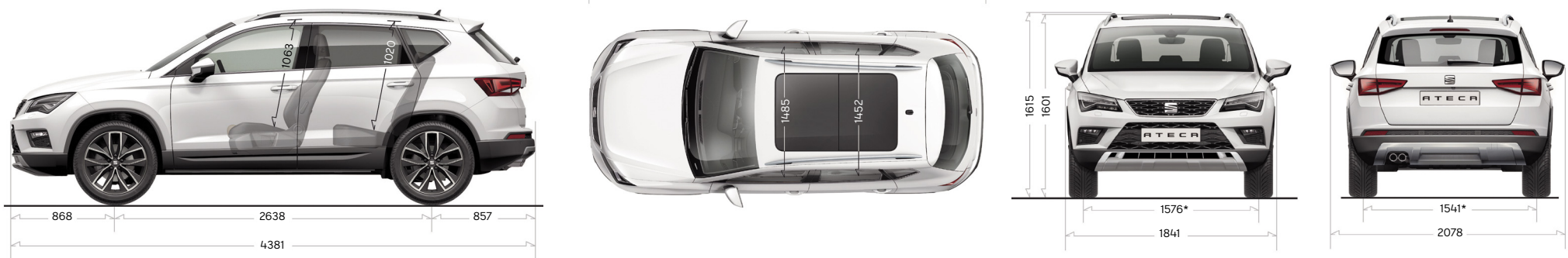
### Weights

Kerb weight [with driver] (kg)	1345	1413	1418
Permissible gross weight (kg)	1870	1930	1940
Max. towing weight without brake (kg)	670	700	700
Max. towing weight with brake 8% (kg)	1500	1850	1800
Max. towing weight with brake 12% (kg)	1300	1800	1600

### Dimensions

Boot capacity (l): 510/485 (2WD/4WD)

Fuel tank capacity (l): 50/55 (2WD/4WD)



\*FR bumpers lead to different dimensions.

# Technical data.

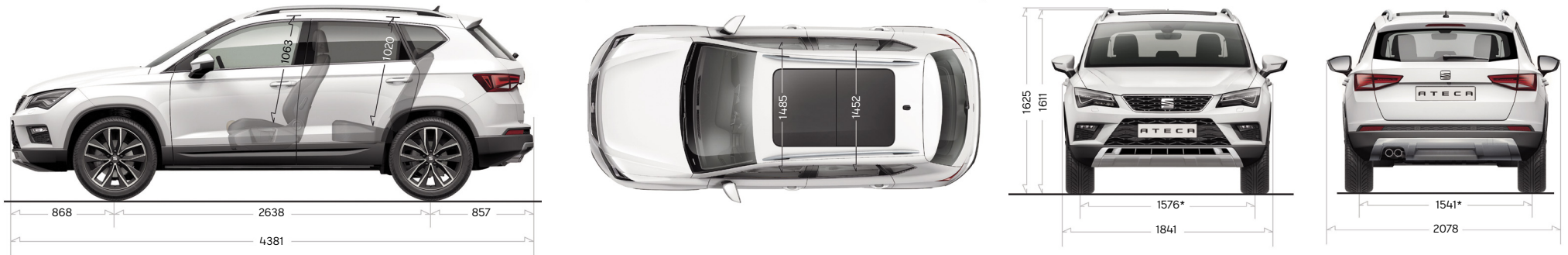
---

## Dimensions

---

Boot capacity (l): 510/485 (2WD/4WD)

Fuel tank capacity (l): 50/55 (2WD/4WD)



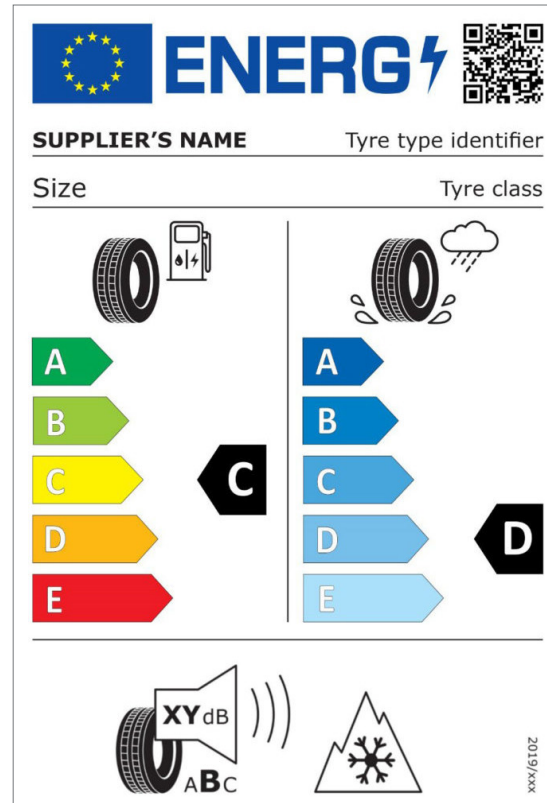
\*FR bumpers lead to different dimensions.

# Your tyre label.

They may not be the first part of your SEAT you notice, but your tyres play a vital role in keeping you on the road. Your EU tyre label tells you everything you need to know.

You'll see detailed information on your tyres and their technical specifications on the SEAT online car configurator. Click [here](#) to start building your SEAT now.

Due to the variation of tyres that may be fitted during production, the configurator will show multiple tyre labels. It is not possible to select a specific tyre when ordering a vehicle.



## Fuel efficiency

This is a measure of 'rolling resistance' – in other words, the amount of energy lost through motion. The lower the rolling resistance, the lower your fuel consumption, with tyres rated as class A being the most efficient.

## Wet grip

Rigorous testing ensures your tyres give great handling and performance in all conditions. Wet grip specifically measures how well you can brake in wet conditions, with grade A giving the shortest stopping distance.

## External noise

Tyres are carefully measured so you know exactly how much noise they'll make while driving. If decibels don't mean a lot to you, don't worry. Each tyre also falls into a noise class A being the quietest and C the loudest.





SEAT is committed to a policy of continuous product development and reserves the right to make changes to specifications, colours and prices without notice. The information in this brochure can therefore be given as guidance only. While SEAT makes every effort to ensure that specifications are accurate at the time of publication, you should always check with your authorised SEAT Partner for the latest information. Due to limitations of the printing process the colours reproduced in this brochure may vary slightly from the actual paint colour and material. This vehicle and all its parts, as well as the original spares, were designed according to the Legal Regulations governing the prevention and minimisation of Environmental Impact, through the use of recycled/recyclable materials, with measures taken to achieve suitable recycling for the conservation and improvement of environmental quality.

Published in the UK,  
September 2024. **seat.c**

**o.uk**