



# For Sublease

## Site features:

Premises:	4,500 RSF
Availability:	Immediate
Sublease Term:	August 2020
Gross Rental Rate:	\$21.00/RSF
Tenant Improvement Allowance:	As-Is
Parking:	10 Parking Spaces Available

**3444 Katy Fwy., Suite 200  
Houston, TX 77007**

---

Lesa Nickelson French  
+1 713 888 4057  
[Lesa.french@am.jll.com](mailto:Lesa.french@am.jll.com)

## Highlights:

- Furniture Negotiable
- Covered Reserved Parking (4)
- Excellent I-10 Visibility & Access



# For Sublease

**4,500 RSF available for sublease**  
3444 Katy Fwy., Suite 200 | Houston, TX 77077



Foyer Seating Area



Conference Room



Office



Office

The information contained herein is obtained from sources believed to be reliable; however, JLL makes no guarantees, warranties or representations as to the completeness or accuracy thereof. The presentation of this property is submitted subject to errors, omissions, change of price or conditions, and is subject to prior sale, lease or withdrawal without notice.



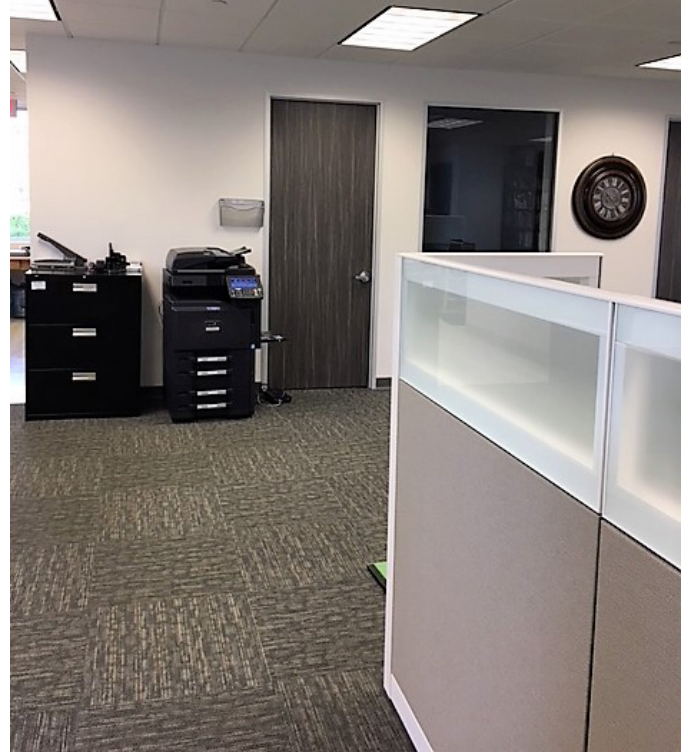


# For Sublease

**4,500 RSF available for sublease**  
3444 Katy Fwy., Suite 200 | Houston, TX 77077



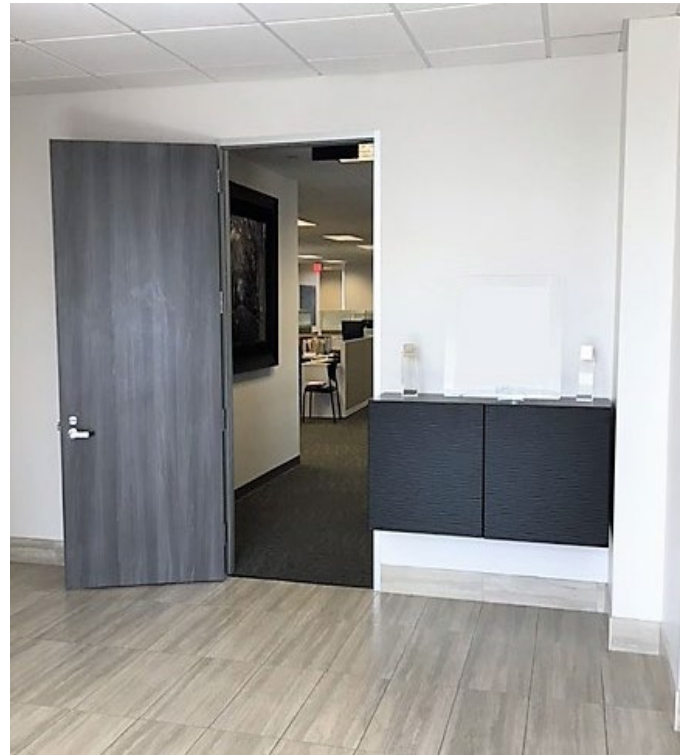
Cubicles



Open Area



Kitchen



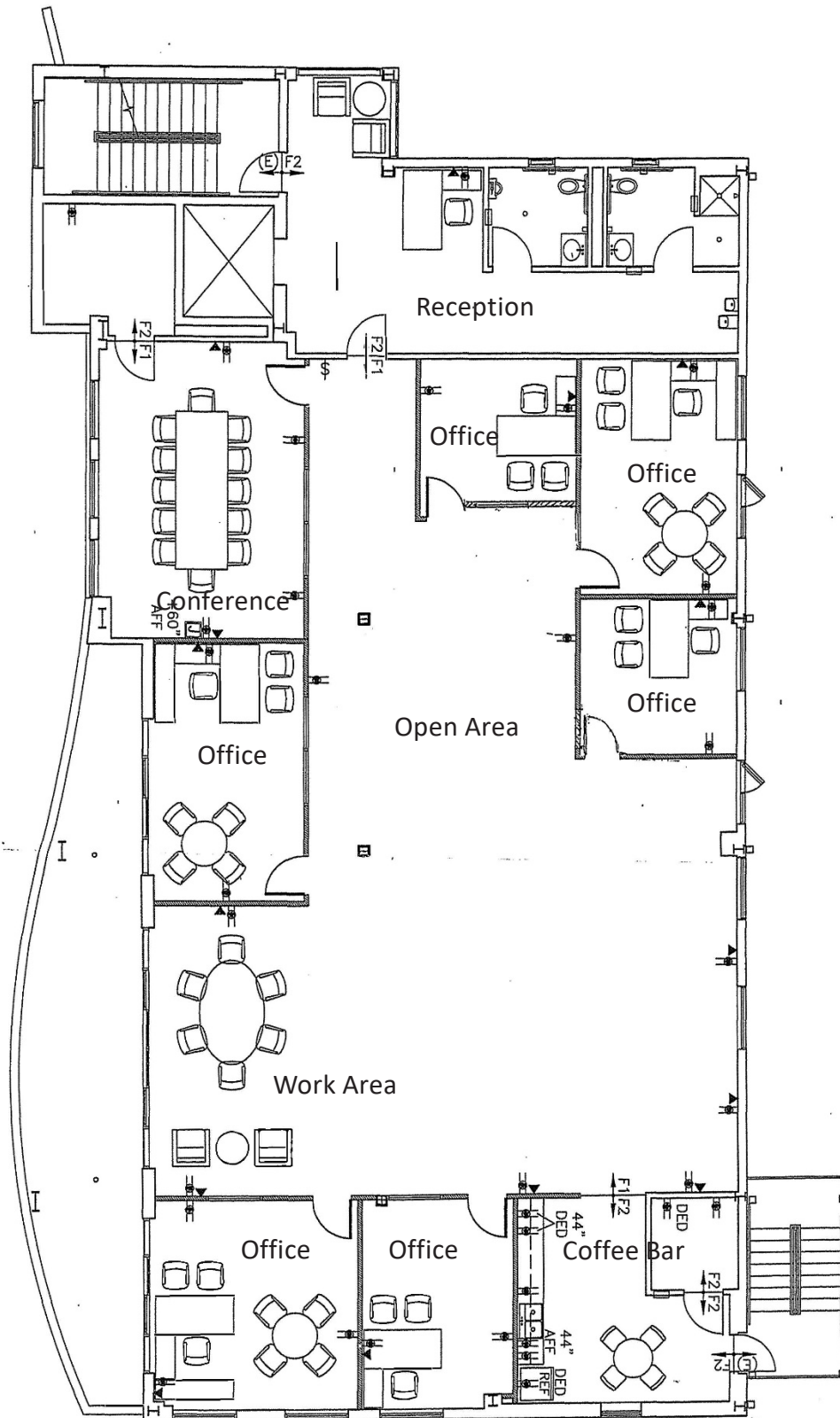
Foyer Entrance

The information contained herein is obtained from sources believed to be reliable; however, JLL makes no guarantees, warranties or representations as to the completeness or accuracy thereof. The presentation of this property is submitted subject to errors, omissions, change of price or conditions, and is subject to prior sale, lease or withdrawal without notice.



# For Sublease

**4,500 RSF available for sublease**  
3444 Katy Fwy., Suite 200 | Houston, TX 77077



The information contained herein is obtained from sources believed to be reliable; however, JLL makes no guarantees, warranties or representations as to the completeness or accuracy thereof. The presentation of this property is submitted subject to errors, omissions, change of price or conditions, and is subject to prior sale, lease or withdrawal without notice.

