

FOR LEASE

Creekside Court I & II

82,272 SF



5201 – 5227 West 73rd Street | Edina, MN 55439

7320 – 7350 Ohms Lane | Edina, MN 55439

Multi-purpose office/warehouse facility conveniently located near major highways, airports and amenities.



Floor plates

Creekside Court I & II

82,272 SF

North Building



Suite 5211

| | |
|--------------|-----------------|
| Office: | 0 |
| Whse: | 2,476 SF |
| Total | 2,476 SF |

- Private dock
- Restrooms

Suite 5203

| | |
|--------------|-----------------|
| Office: | 896 SF |
| Whse: | 1,747 SF |
| Total | 2,643 SF |

1 dock door

Private restrooms

Suite 5213

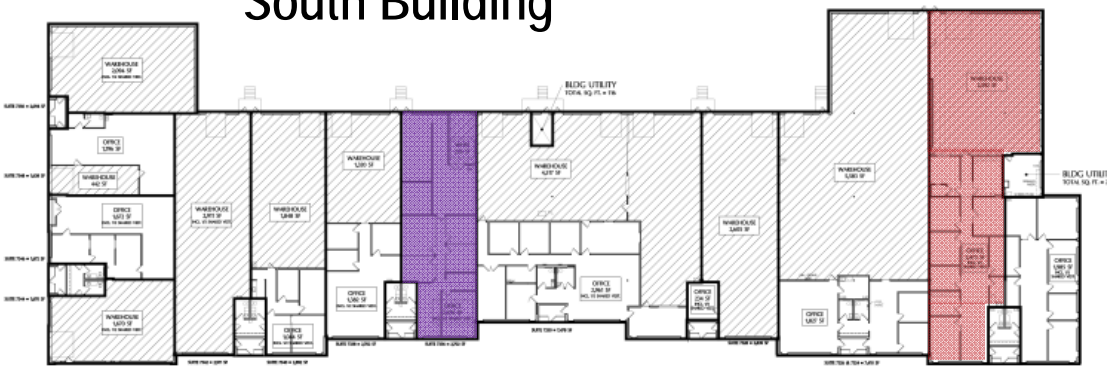
| | |
|--------------|-----------------|
| Office: | 1,154 SF |
| Whse: | 2,403 SF |
| Total | 3,557 SF |

1 dock door

Private offices

Private restrooms

South Building



Suite 7322

| | |
|--------------|-----------------|
| Office: | 2,474 SF |
| Whse: | 2,584 SF |
| Total | 5,058 SF |

1 dock door

Private restrooms

Suite 7336

| | |
|--------------|-----------------|
| Office: | 1,724 SF |
| Whse: | 984 SF |
| Total | 2,708 SF |

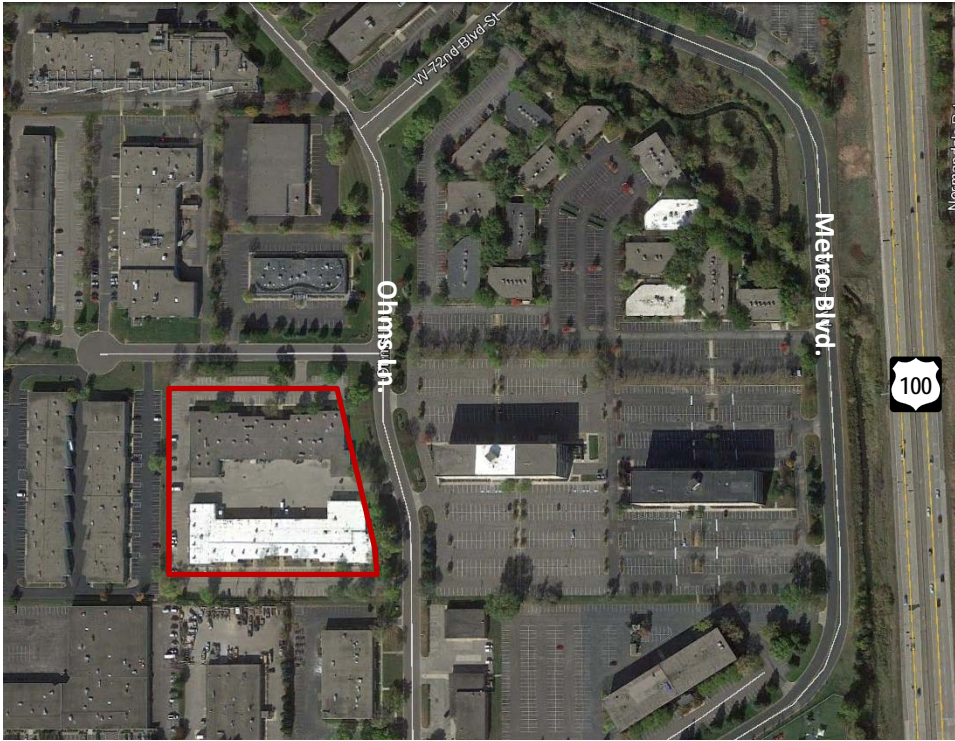
Private dock

Restrooms

Property Highlights and Stats

Creekside Court I & II

82,272 SF



Property Highlights:

82,272 total RSF

14' clear height in warehouse

Spacious truck loading area

Built in 1978

Ample parking with a 2.57/1,000 ratio

Base rent: \$4.50 / \$8.50 / SF

2015 operating expenses: \$3.72

Close to hotels and retail (minutes from MOA)

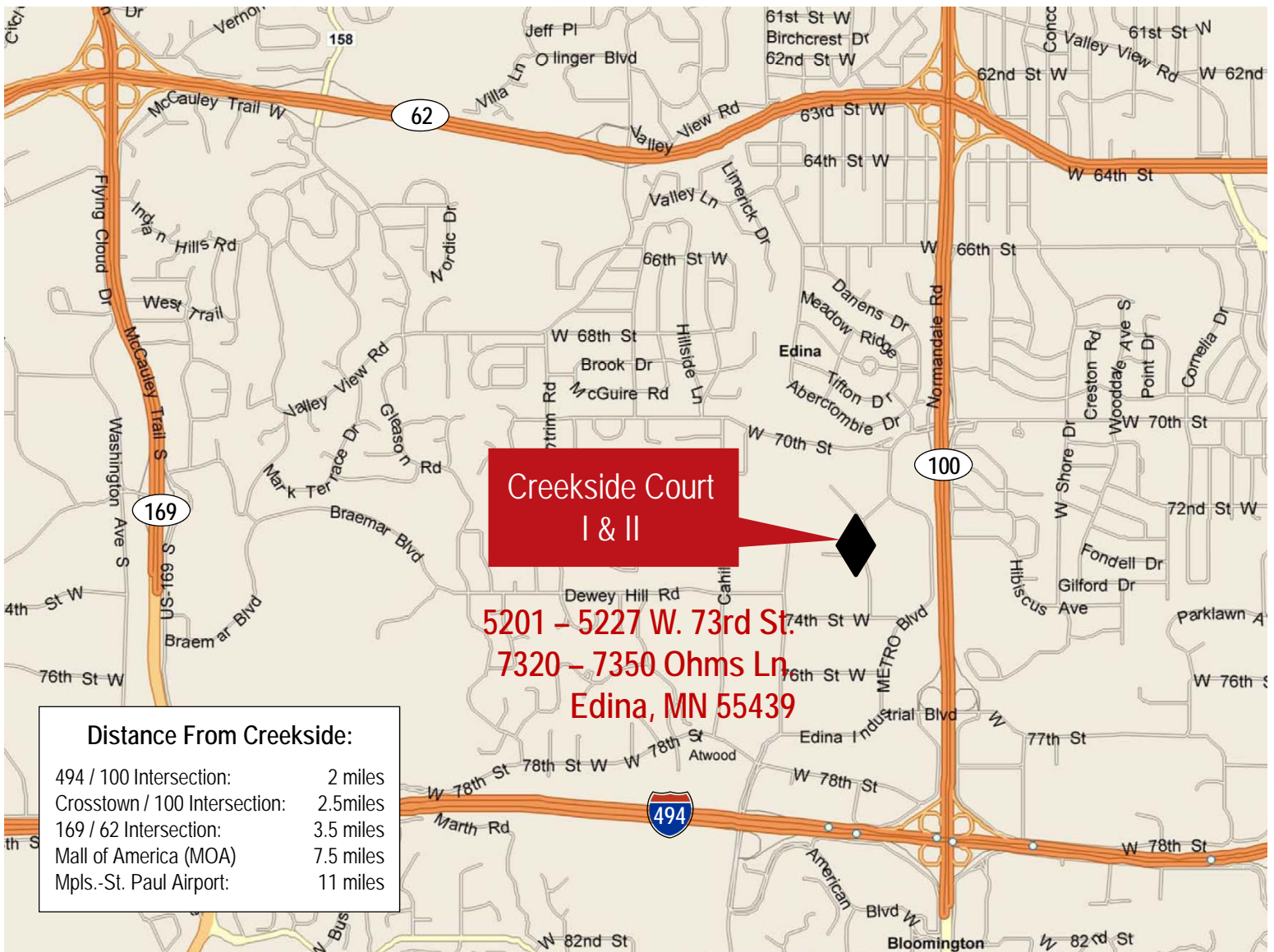
Easy access to I-494, Hwy 169 & Hwy 100



Property map

Creekside Court I & II

82,272 SF



Chris Hickok, CCIM
 Executive Vice President
 +1 612 217 5121
 chris.hickok@am.jll.com

Dan Terry
 Vice President
 +1 612 217 5122
 dan.terry@am.jll.com

Dan Larew
 Associate
 +1 612 217 6726
 dan.larew@am.jll.com