



CENTURY II
1415 28th Street

Justin Lossner, CCIM, SIOR
Managing Director
+1 515 371 0846
justin.lossner@am.jll.com

Kate Fanter Byus
Vice President
+1 515 865 8216
kate.byus@am.jll.com



CENTURY II

1415 28th Street
West Des Moines, IA





Property Information

- 99,840 SF Class A office space
- 4-story building located between Westown Parkway and I-235, with prime interstate visibility
- Fiber connectivity available
- Renovated lobby with new furniture and signage
- Area amenities include restaurants, retail, banking and hotels

Terms

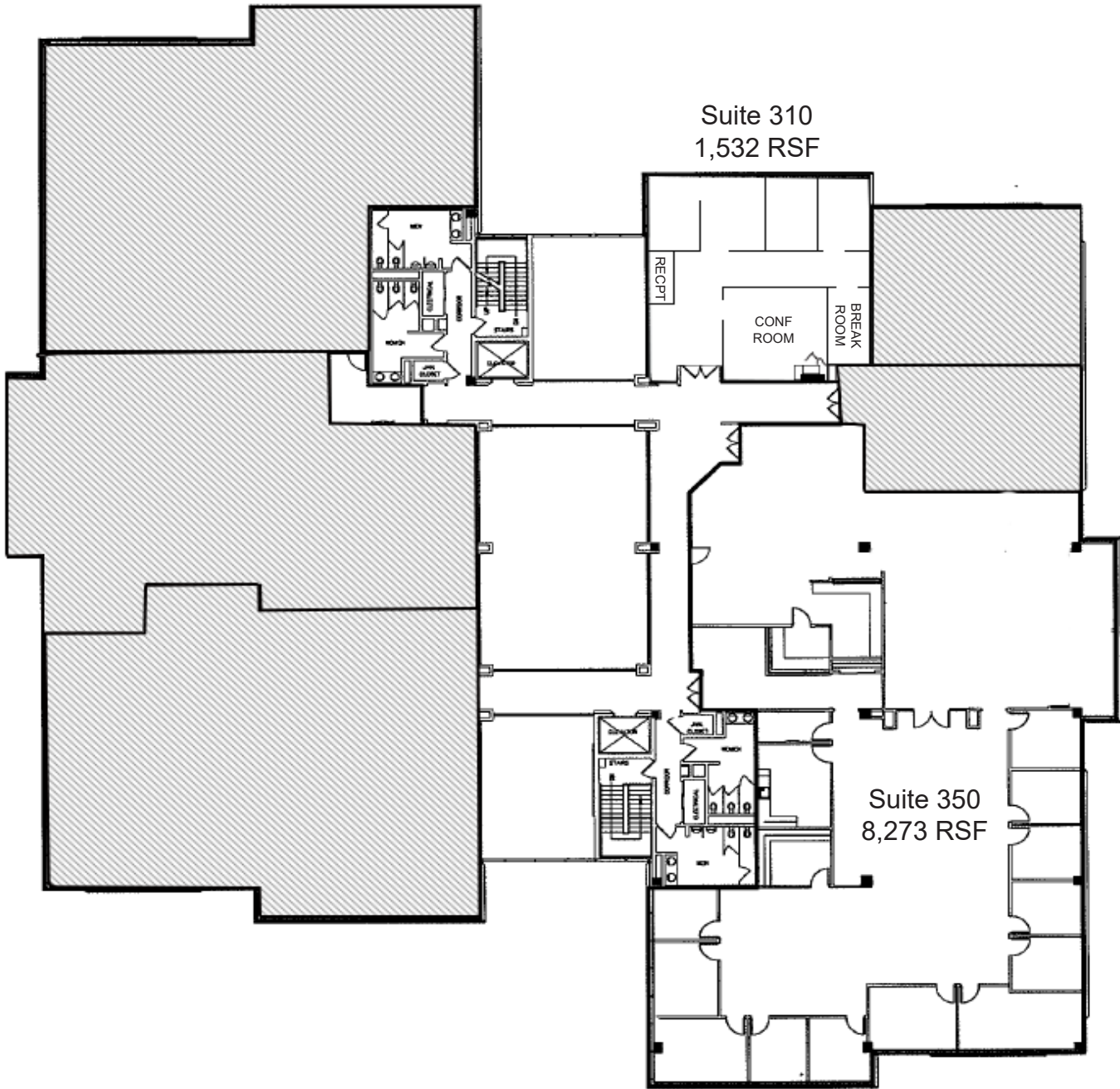
- \$10.00/SF NNN
- OPEX available upon request
- 5-year term preferred

THIRD FLOOR

Availability:

Suite 310 - 1,532 RSF

Suite 350 - 8,273 RSF - demisable





CONFERENCE FACILITIES

- On-site conference room available at no charge to tenants
- Simpson College offers conference room and computer lab rental option for larger meetings and events



LOCATION



CONTACT

For leasing information, contact:



Justin Lossner, CCIM, SIOR
Managing Director
+1 515 371 0846
justin.lossner@am.jll.com

Kate Fanter Byus
Vice President
+1 515 865 8216
kate.byus@am.jll.com

The information contained herein has been given to us by the owner of the property or other sources we deem reliable. We have no reason to doubt its accuracy, but we do not guarantee it. All information should be verified prior to purchase or lease. Jones Lang LaSalle Brokerage, Inc. is a licensed broker in the State of Iowa.

Owned by:



Managed by:

