



For Lease

Byrd Corporate Park – Building 9

27,688 s.f. of warehouse and office space available in building 9

- Divisible to 13,055 s.f.
- Approximately 2,800 s.f. of office space available
- 17' clear ceiling heights
- Large truck court and ample parking
- Excellent loading: 10 docks and 3 drive-in doors
- Zoned M-1
- 1 mile from Richmond International Airport
- Close proximity to I-64, I-95, & 295

**5631-5645 Corrugated Rd,
Richmond, VA**

Chris Avellana
+1 804 200 6468
chris.avellana@am.jll.com

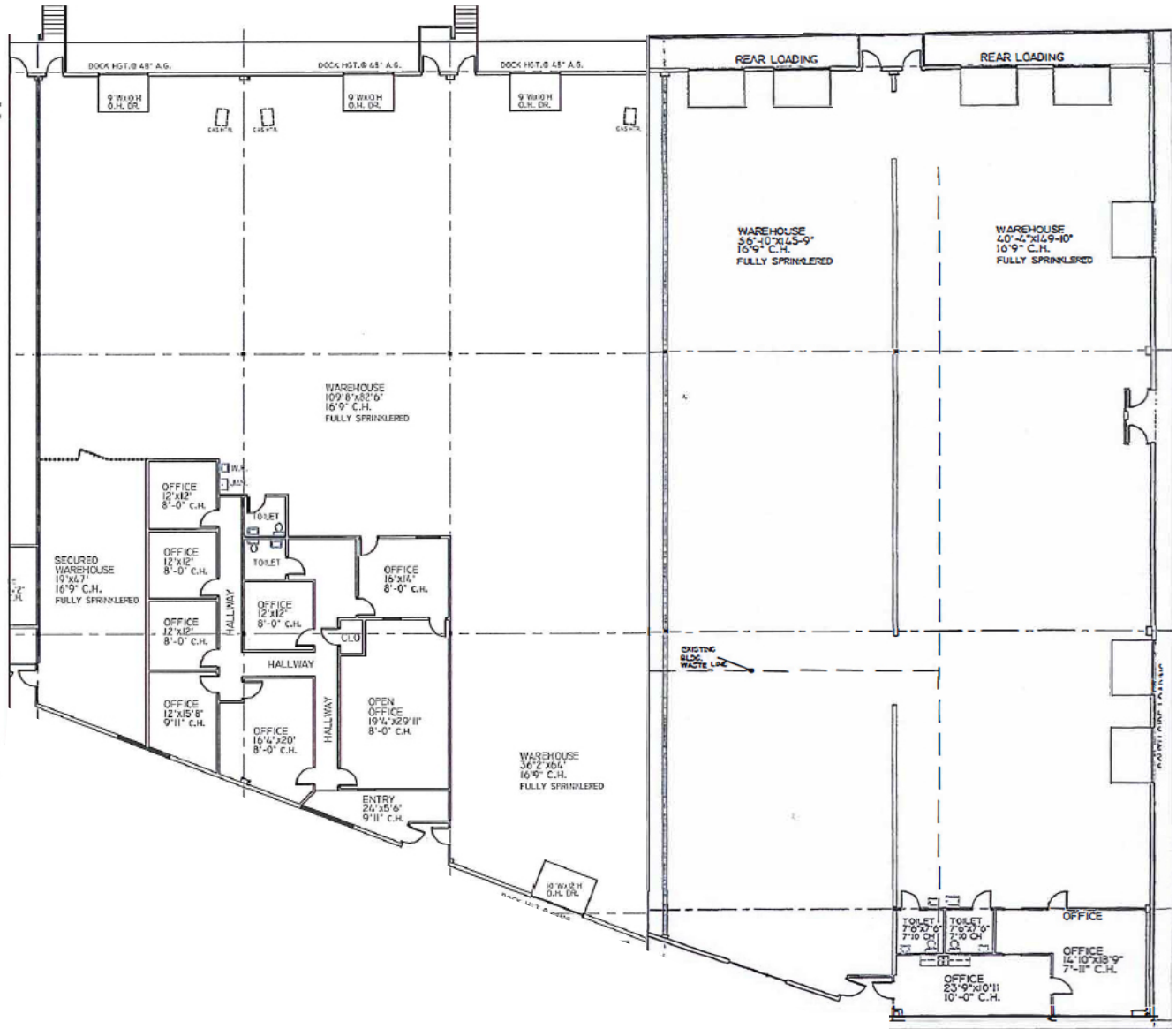
Jake Servinsky
+1 804 200 6428
jake.servinsky@am.jll.com

jll.com/richmond

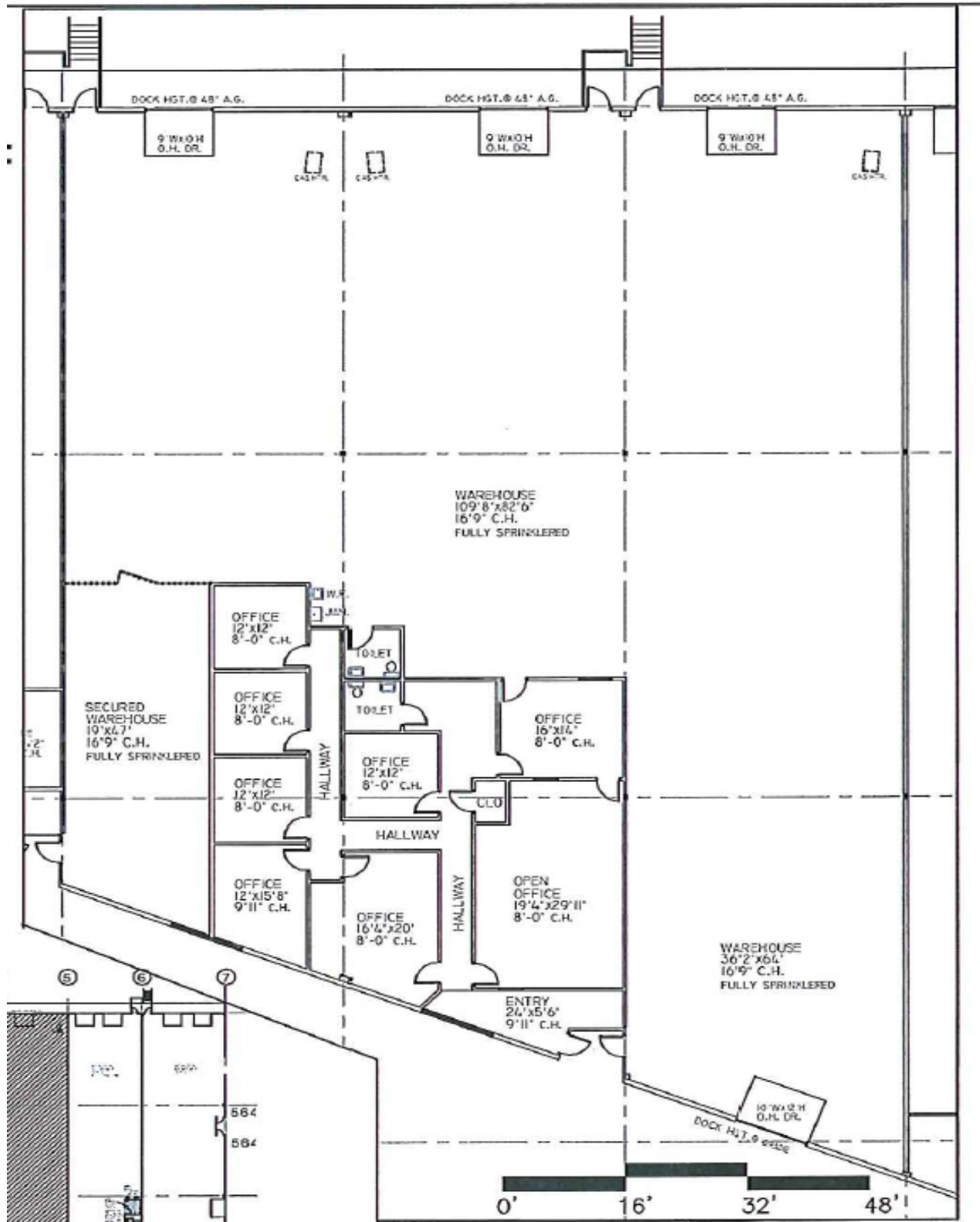




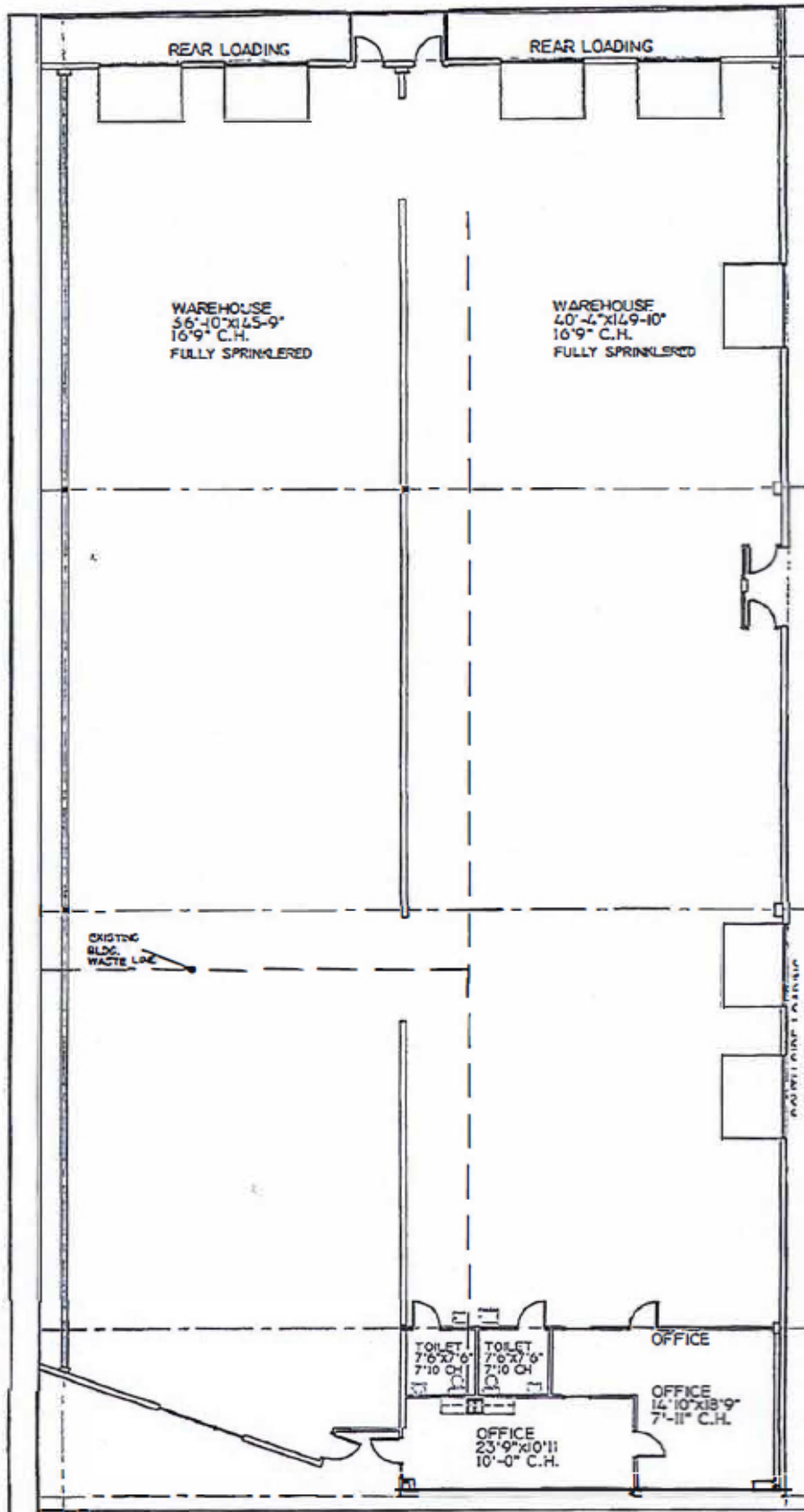
Suite 5633 - 5645: 27,688 s.f.



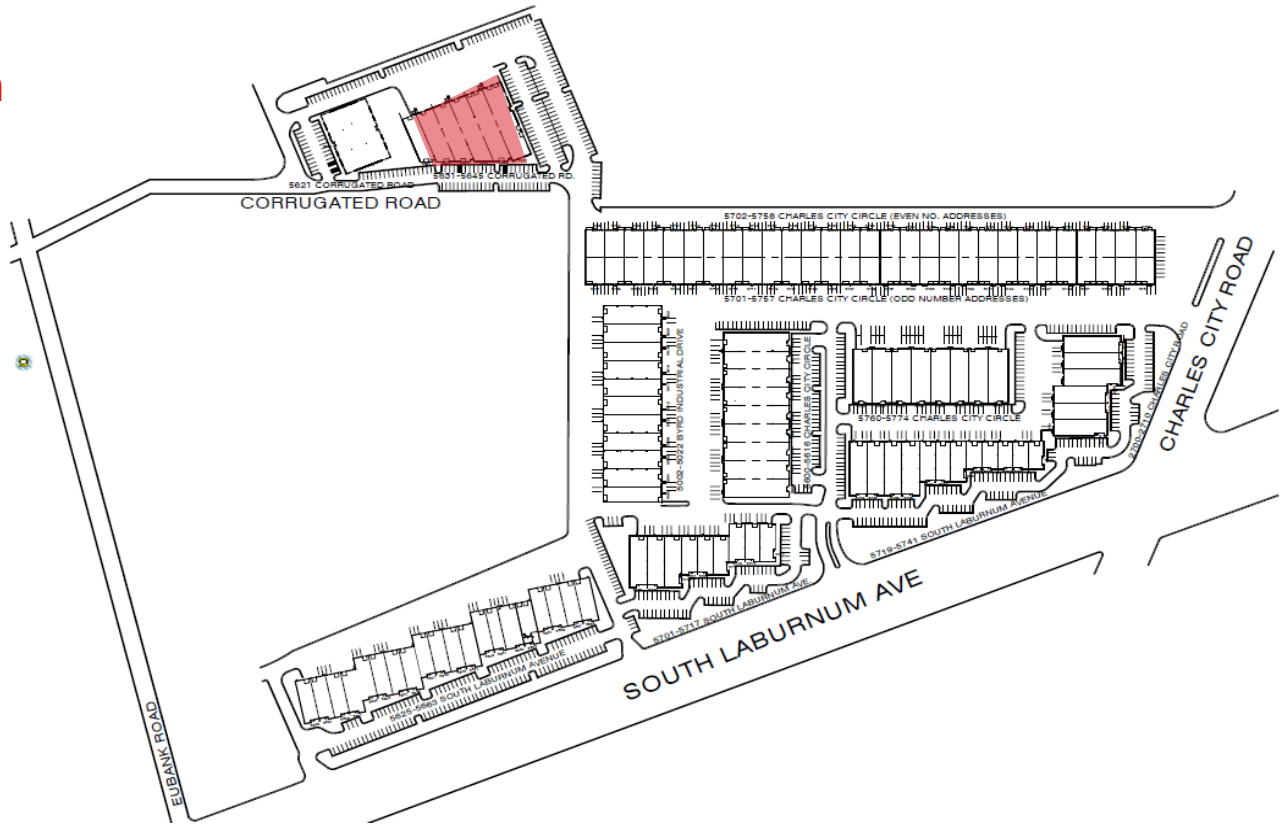
Suite 5633-5637: 14,880 s.f.



Suite 5639-5645: 13,055 s.f.

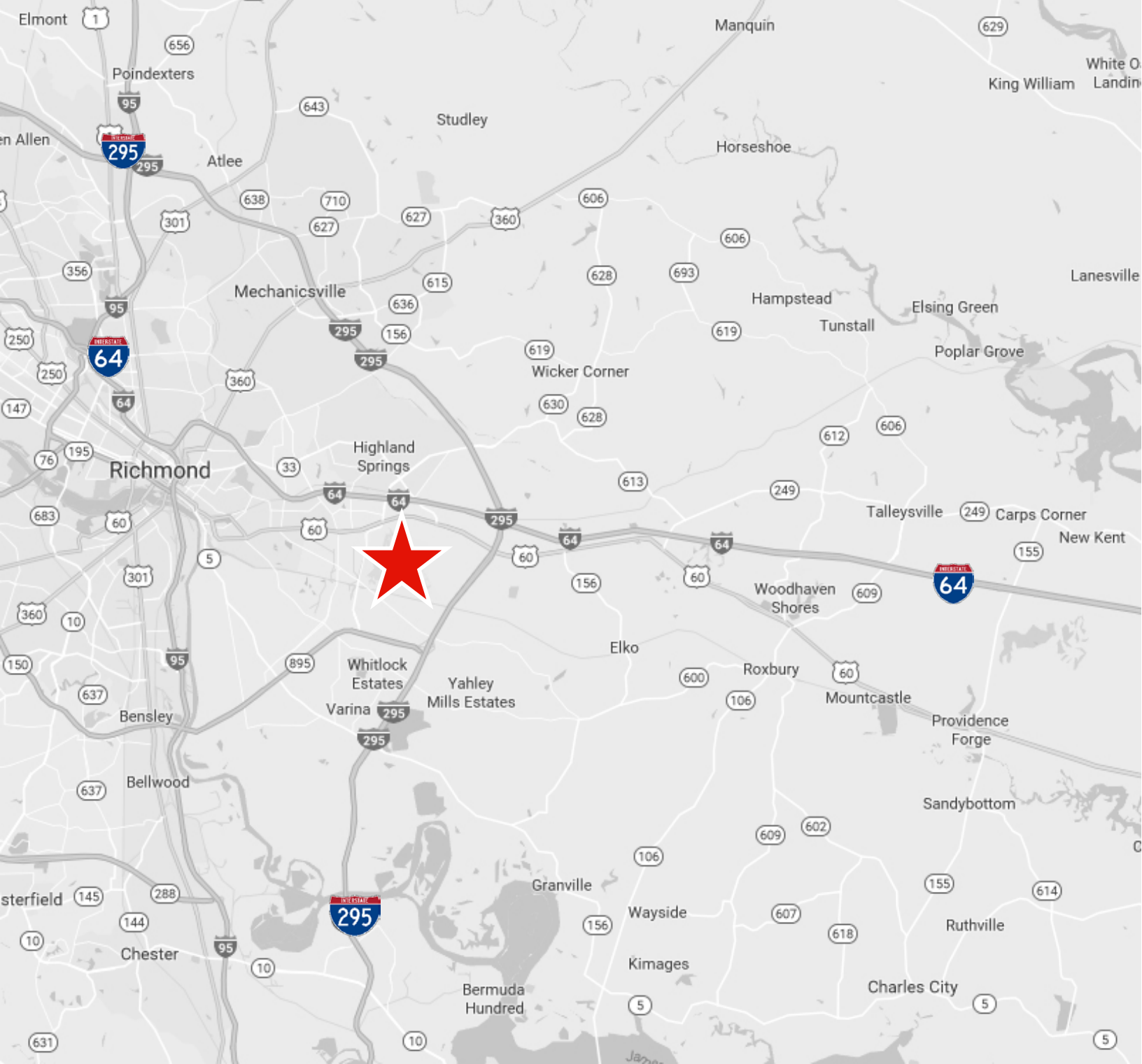


Site plan



Aerial





Although information has been obtained from sources deemed reliable, Owner, Jones Lang LaSalle, and/or their representatives, brokers or agents make no guarantees as to the accuracy of the information contained herein, and offer the Property without express or implied warranties of any kind. The Property may be withdrawn without notice. If the recipient of this information has signed a confidentiality agreement regarding this matter, this information is subject to the terms of that agreement. ©2014. Jones Lang LaSalle. All rights reserved.

