



DESIRABLE **CONVENIENT** ELEGANT

One Monument Place is a desirable Class-A building offering a campus-like setting in the heart of Fairfax Corner

ONE MONUMENT PLACE | 12150 MONUMENT DRIVE | FAIRFAX, VIRGINIA

- New upper floor tenant lobbies
- Class A property with high-end finishes throughout the building: including mahogany, marble and granite
- \$30.00–\$32.00 per square foot, full service
- Exterior signage available for larger users
- Conveniently located in Fairfax Center with immediate access to I-66 and Route 50
- Adjacent to Fair Oaks Mall and within one mile of Fairfax Corner
- On-site fitness center and deli
- On-site property management
- Beautiful campus-like setting with a pond, fountain and gazebo
- Free structured parking at a ratio of 3.30/1,000 square feet



AMENITIES



1. Fairfax Towne Center
2. Fair Oaks Mall
3. Fairfax Corner
4. Fair Lakes Promenade
5. East Market at Fair Lakes
6. Hyatt Fair Lakes
7. The Shops at Fair Lakes
8. Fair Lakes Center



For lease information, please call David Goldstein, Brent Mathis or Marc Bassin at +1 703 485 8800

Availability

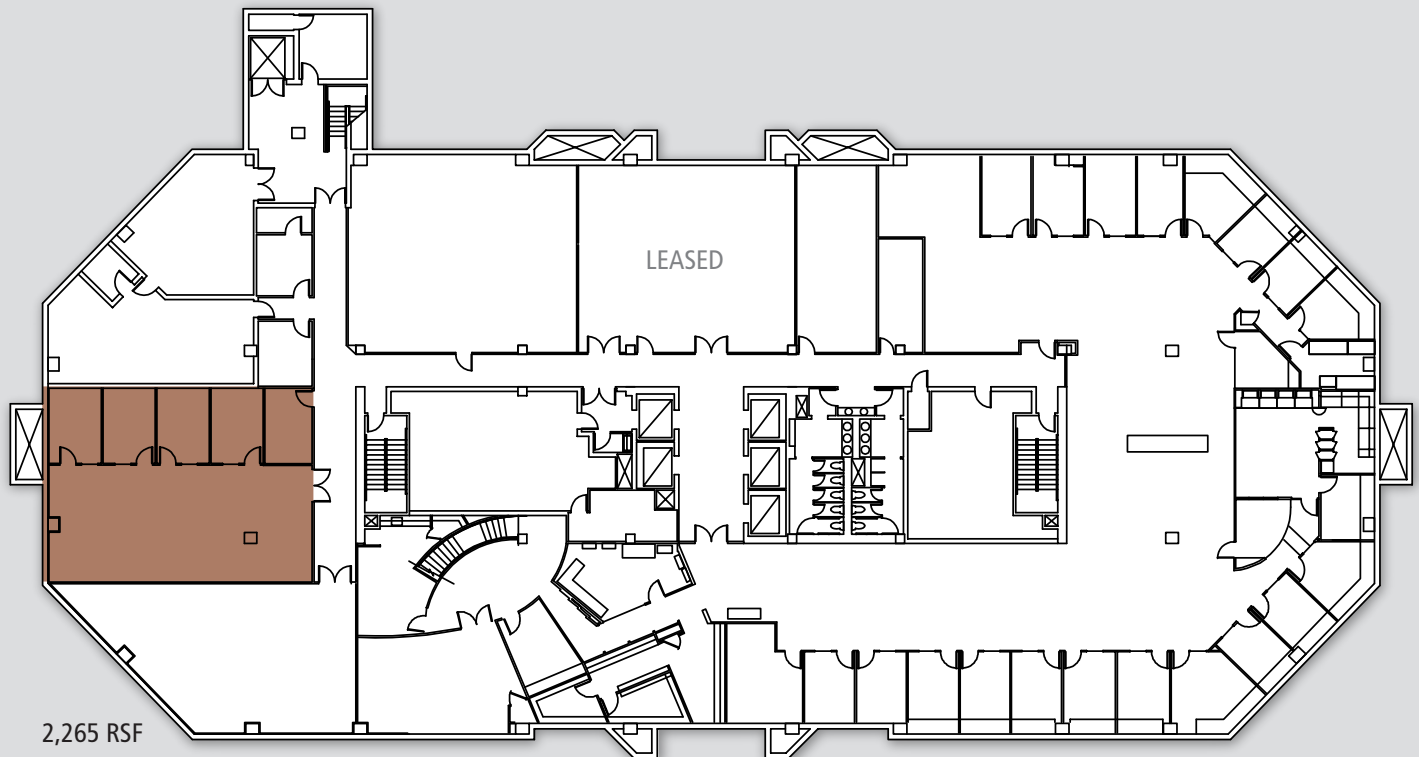
*Spec suite

Floor	RSF	Availability
LL	2,265	Vacant
1st	7,304	Vacant
2nd	3,285	Vacant

Floor	RSF	Availability
2nd	3,124	Vacant
2nd	3,160	Vacant
3rd	3,054	2/1/18
3rd	2,218	Vacant

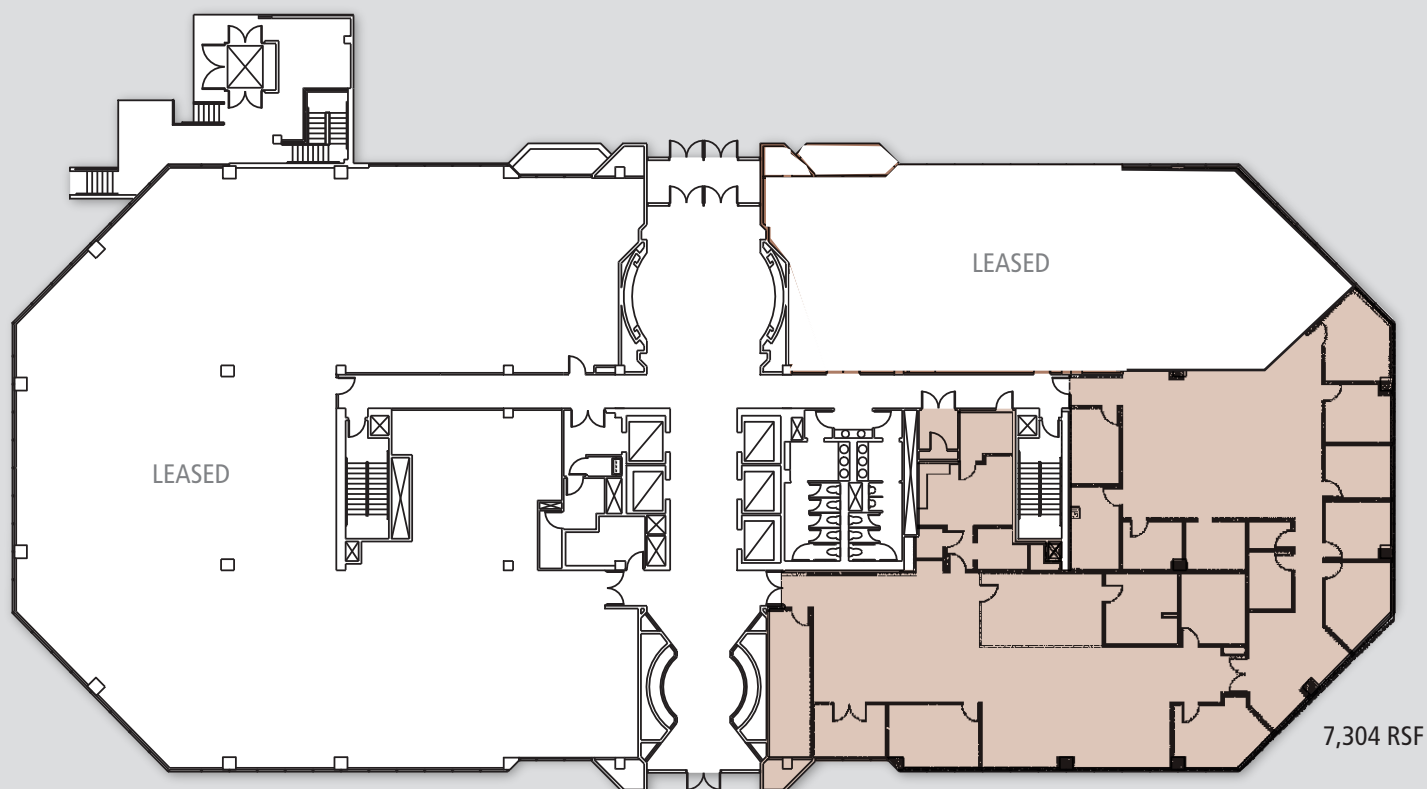
Floor	RSF	Availability
4th	9,070	Vacant
5th	2,108	Vacant
5th	3,008	Vacant
8th	2,356	Vacant

Lower Level

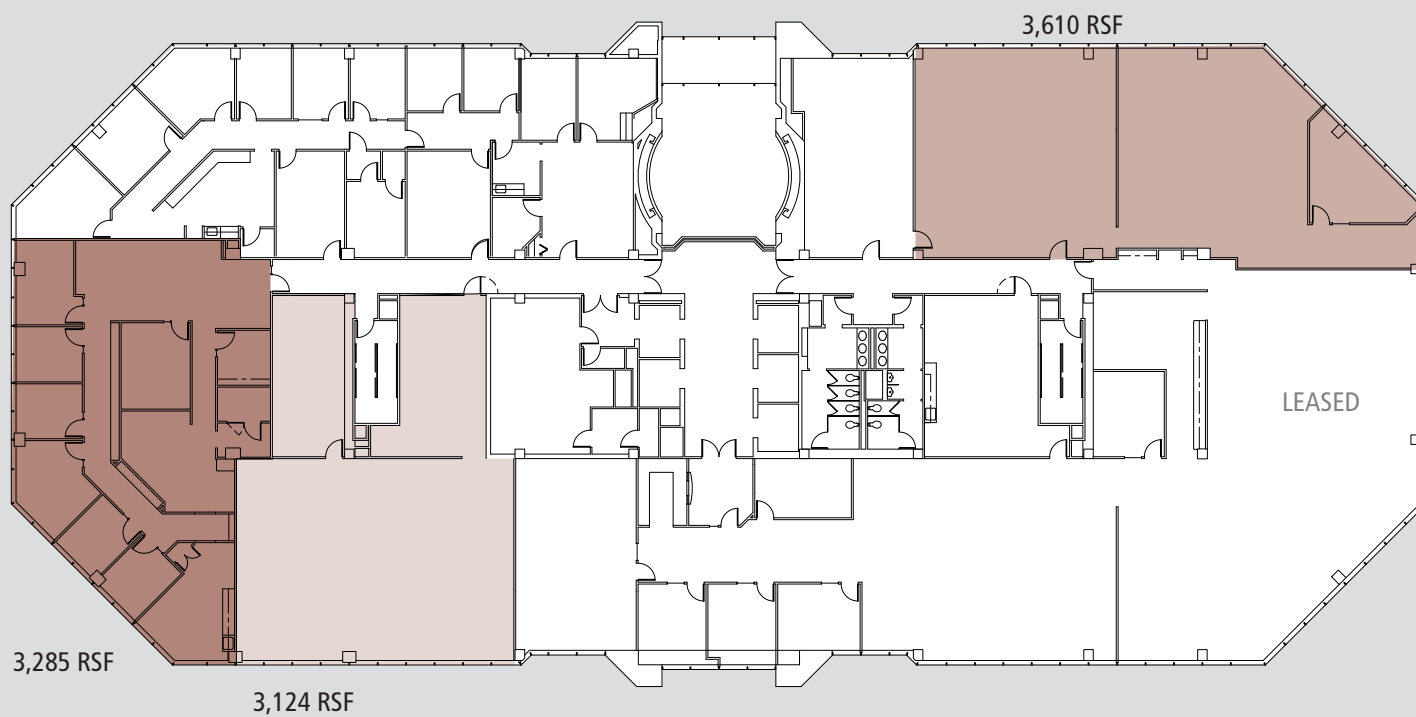


For lease information, please call David Goldstein, Brent Mathis or Marc Bassin at +1 703 485 8800

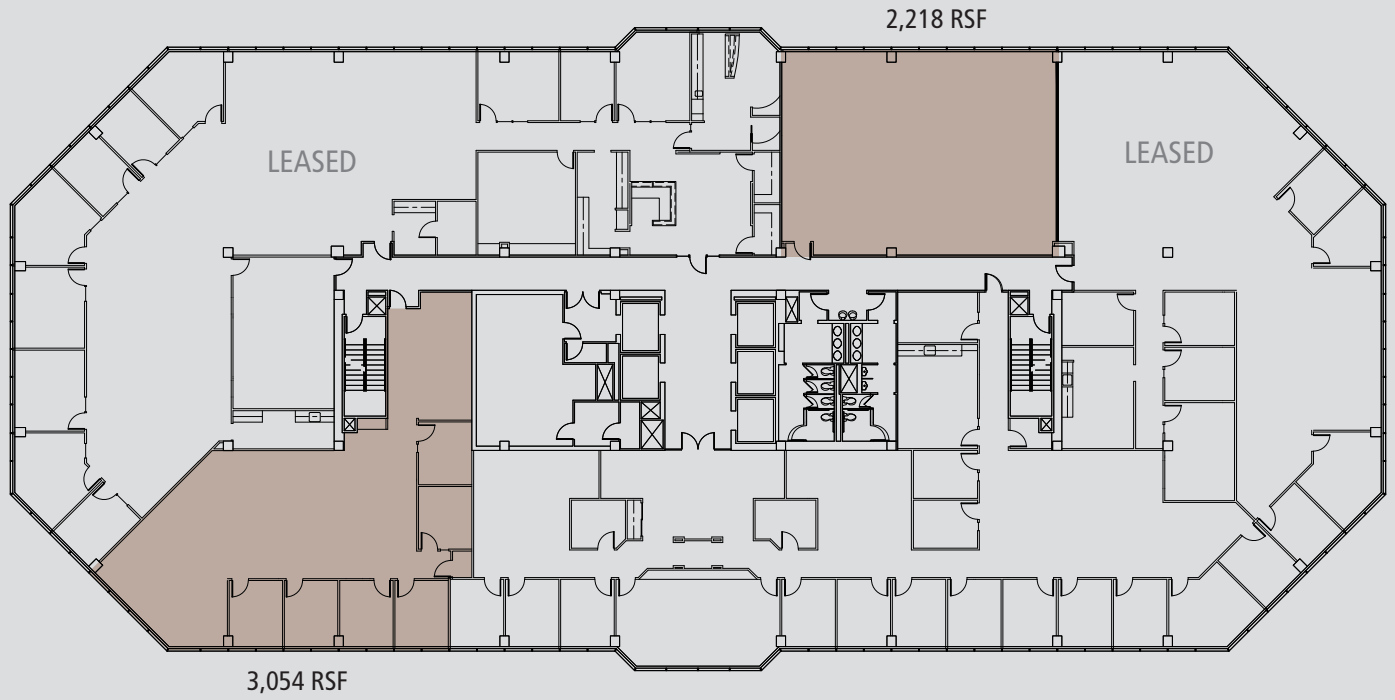
1st Floor



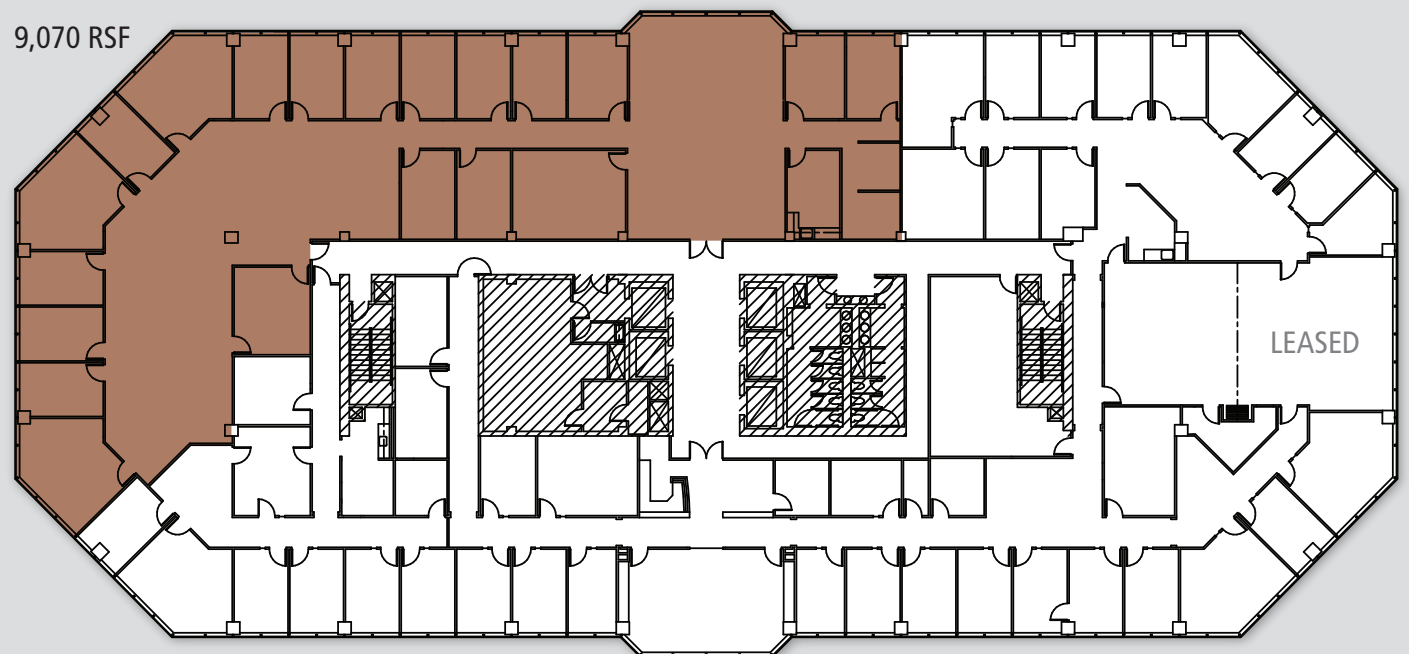
2nd Floor



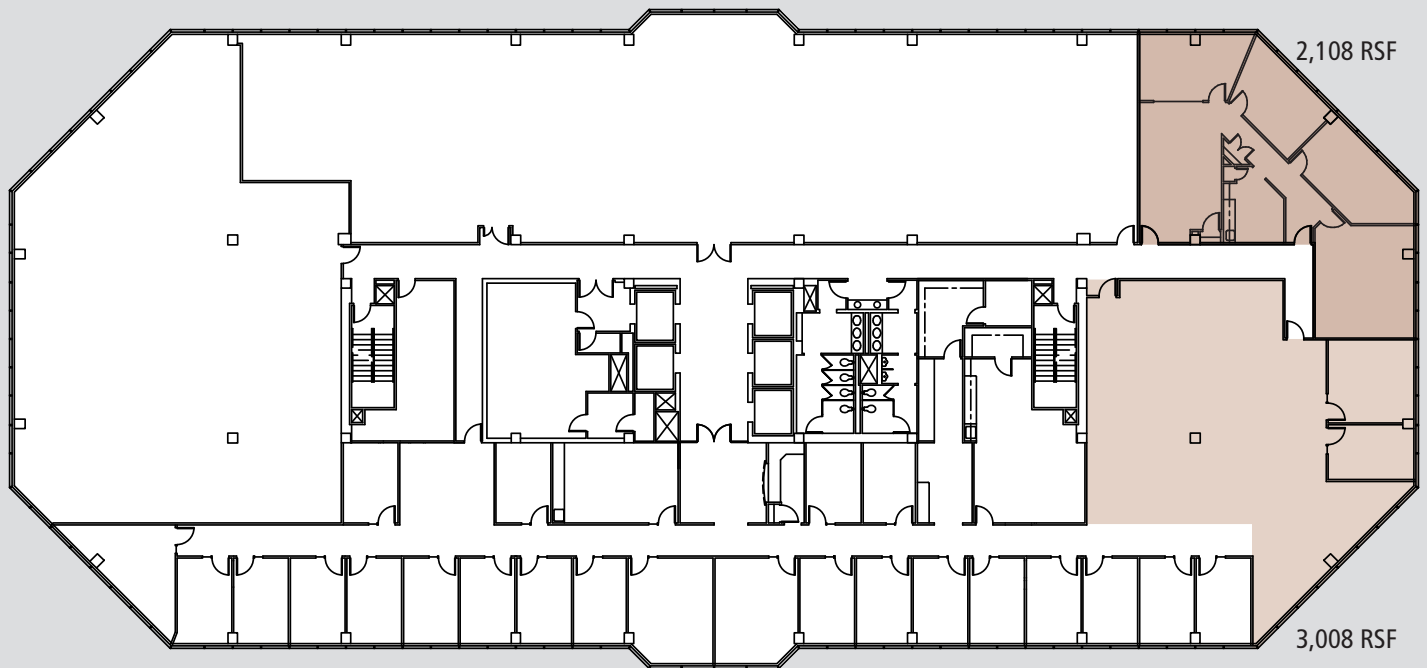
3rd Floor



4th Floor



5th Floor



8th floor

