

An aerial photograph of a large, multi-story office building complex, the VZient Point. The building is composed of several interconnected rectangular blocks with a grid-like window pattern. It is surrounded by a large parking lot filled with cars, and there are trees and landscaping around the perimeter. The entire image is overlaid with a semi-transparent orange filter. The text "VZIENT POINT" is centered over the building in a white, sans-serif font, with a vertical line separating the "V" and "ZIENT" parts.

VZIENT  
POINT

250 & 290 EAST JOHN CARPENTER FWY | IRVING TX

# property **HIGHLIGHTS**

145,890 SF \ 250 EJC

411,253 SF \ 290 EJC

Large, efficient floorplates

Floor plates/glass lines offer abundant amount of natural light

Full amenity package including a new zen garden

On-site management

24/7 on-site security

Abundant parking - covered and surface

Easy ingress/egress

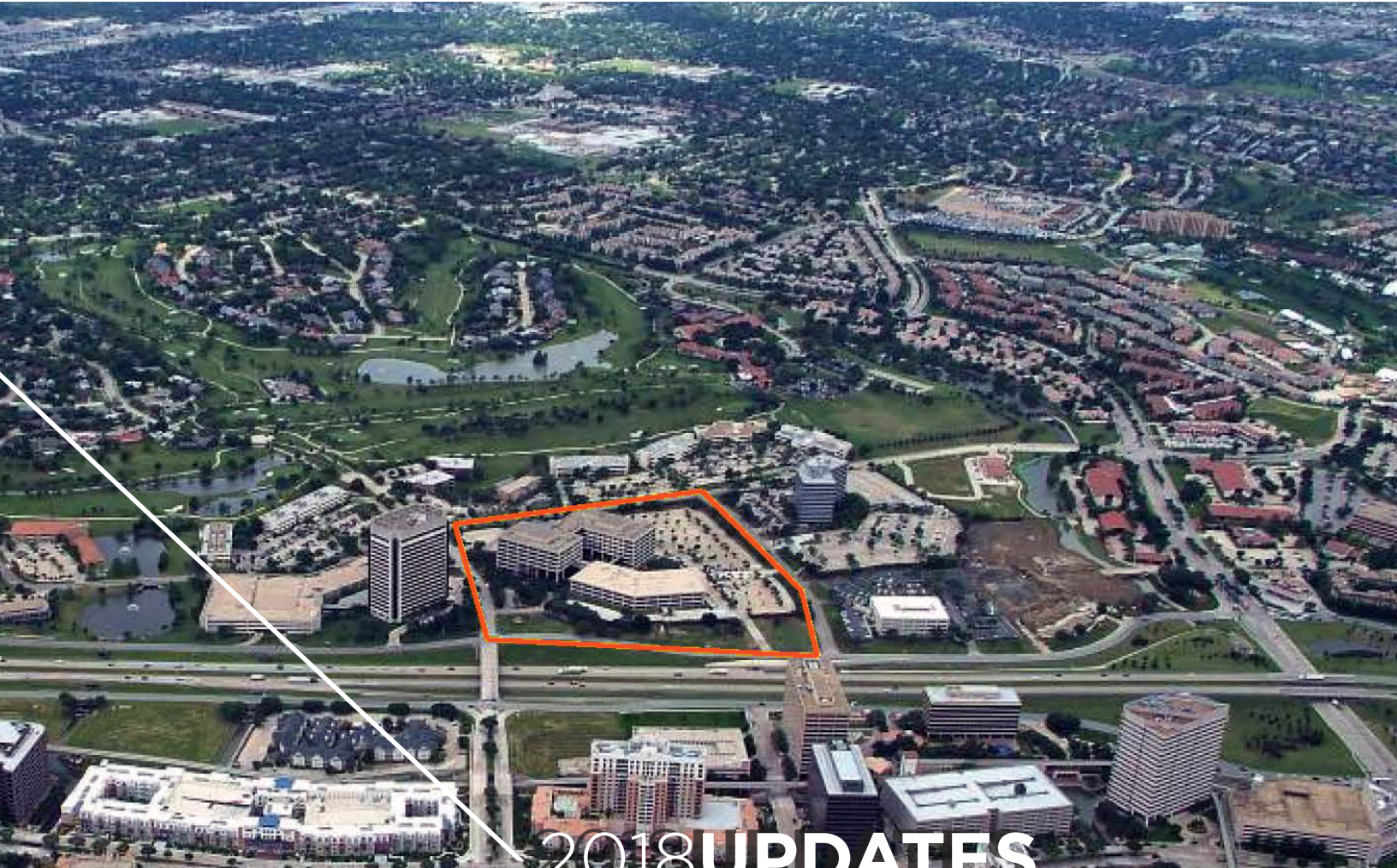
Visibility from 114

DART bus/rail service nearby

Proximity to Las Colinas amenities including Las Colinas Country Club and The Four Seasons



250 & 290 EAST JOHN CARPENTER FWY | IRVING TX



## 2018 UPDATES

**Brand new zen garden**

---

**Updated locker rooms in the fitness center**

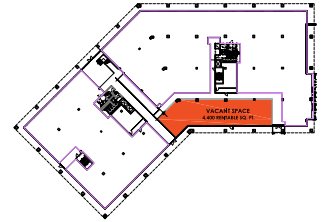
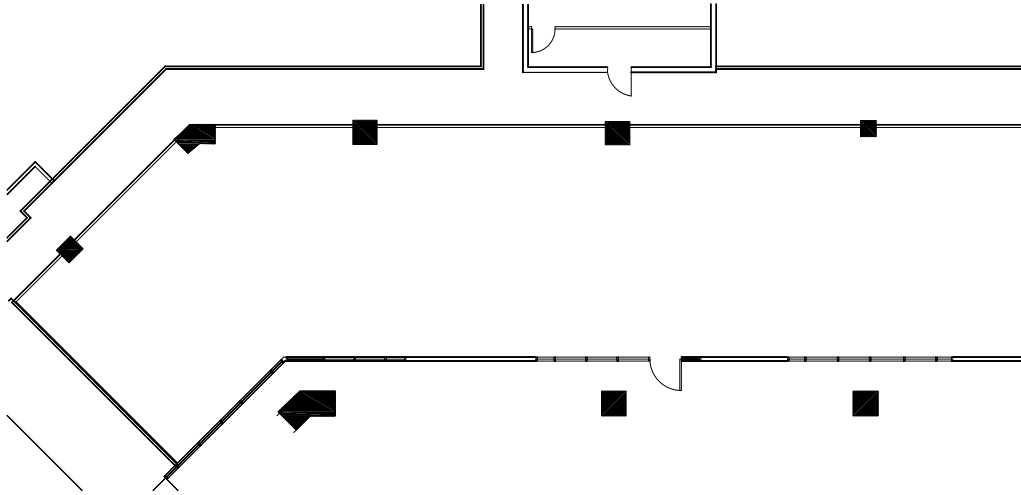
---

**Upgraded lobby furniture**

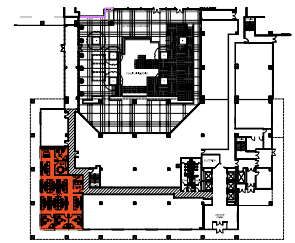
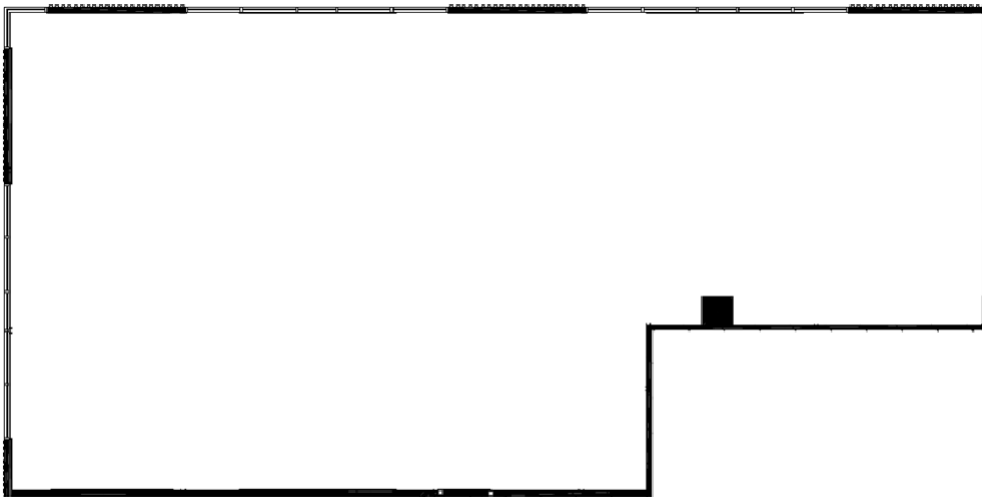
---

**New patio/tenant lounge**

# availableSPACE



**250 EJC**  
1st Floor  
4,400 SF



**290 EJC**  
1st Floor  
3,337 SF

250 & 290 EAST JOHN CARPENTER FWY | IRVING TX

# V | ZIENT P | OINT



## property **AMENITIES**

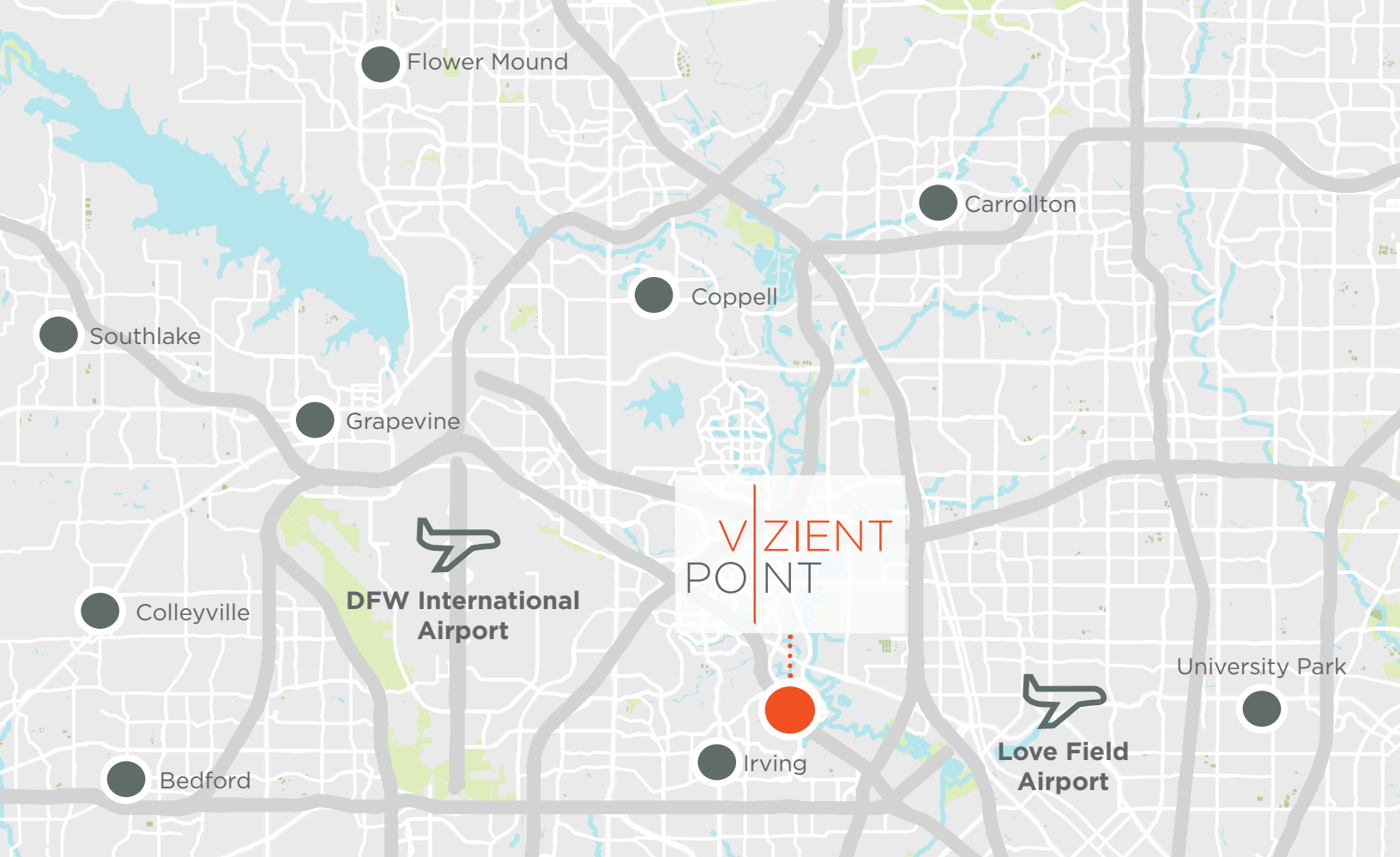
State-of-the-art fitness center with massage room, instructor-led classes, and locker rooms/showers

The Cove: private building courtyard/outdoor tenant lounge with Wi-Fi and koi fish pond

Large indoor tenant seating area/lounge

Starbucks

On-Site café - Mason's Deli



## area **INFORMATION**

**No.1**

Texas is the #1 state for doing business 10 years in a row (CEO magazine)

**7.2M**

Workers in Dallas, giving it the 2nd largest workforce in America

**13.48**

The average distance to Vizient Point from surrounding cities is 13.48 miles

**183K**

Passengers travel through Dallas airports daily due to high accessibility and central location





# VIZIENT POINT

**For leasing information, please contact:**

**Jeff Eckert, CCIM**  
Managing Director  
+1 214 438 6153  
jeff.eckert@am.jll.com

**James Esquivel**  
Managing Director  
+1 214 438 6152  
james.esquivel@am.jll.com

**Ashley Curry**  
Vice President  
+1 214 438 6348  
ashley.curry@am.jll.com

