

WOODVIEW TOWER

1349 empire central | dallas | texas





SPACE HIGHLIGHTS

- Quoting \$14.50 - \$16.50 full service
- Up to 30,000 RSF; signage and naming rights also available
- 14,000 RSF of spec suites available - comprised of 888 s.f. to 2,480 s.f. suites
- Spectacular views overlooking Downtown Dallas and Brook Hollow Golf Club



PROPERTY HIGHLIGHTS

- 198,447 s.f. building
- 13 Stories (typical floor 15,265 s.f.)
- Built 1982; newly renovated in 2012
- 3:1,000 parking ratio; covered and surface spaces
- New chillers installed in 2011
- New building deli serving breakfast & lunch daily
- Building conference center; free for tenants' use
- Fiber providers: AT&T, Time Warner & Logix
- On-site security; Monday - Friday, 7am-1am (Manned patrol on weekends)



OWNED AND MANAGED BY:

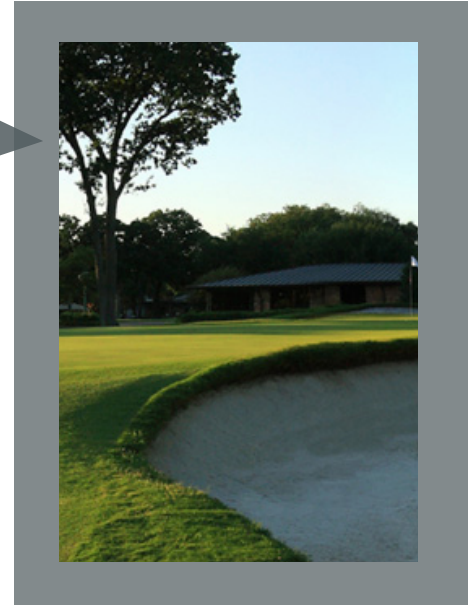
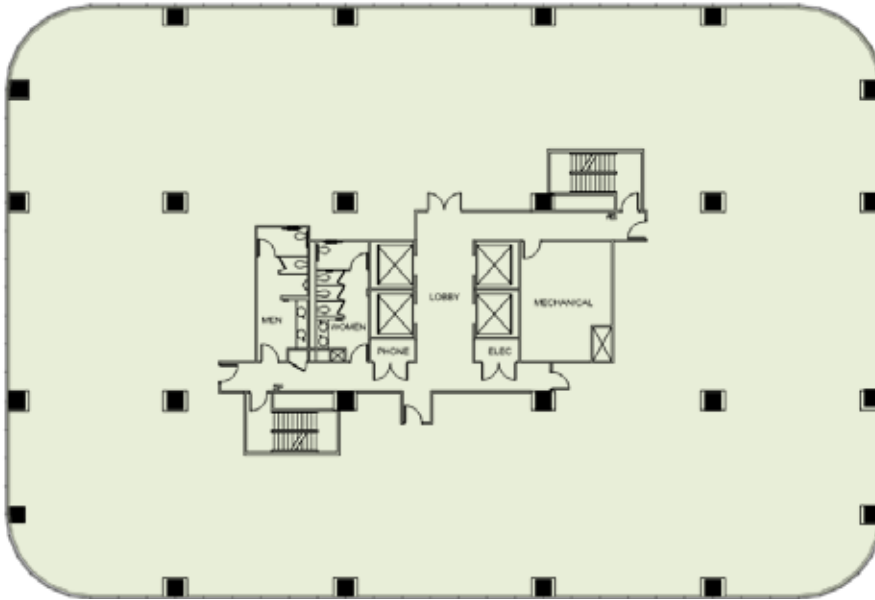


Seskaway Management Group

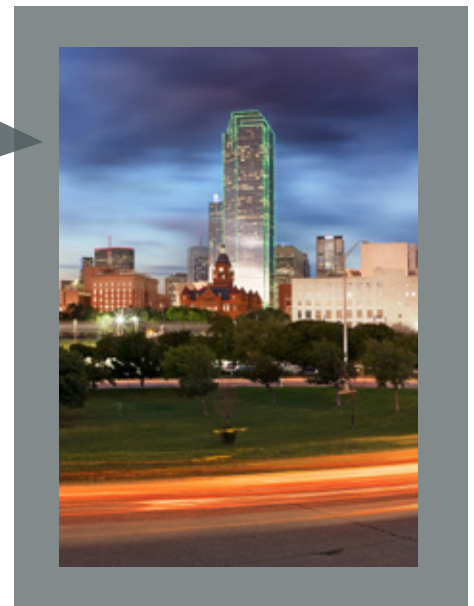
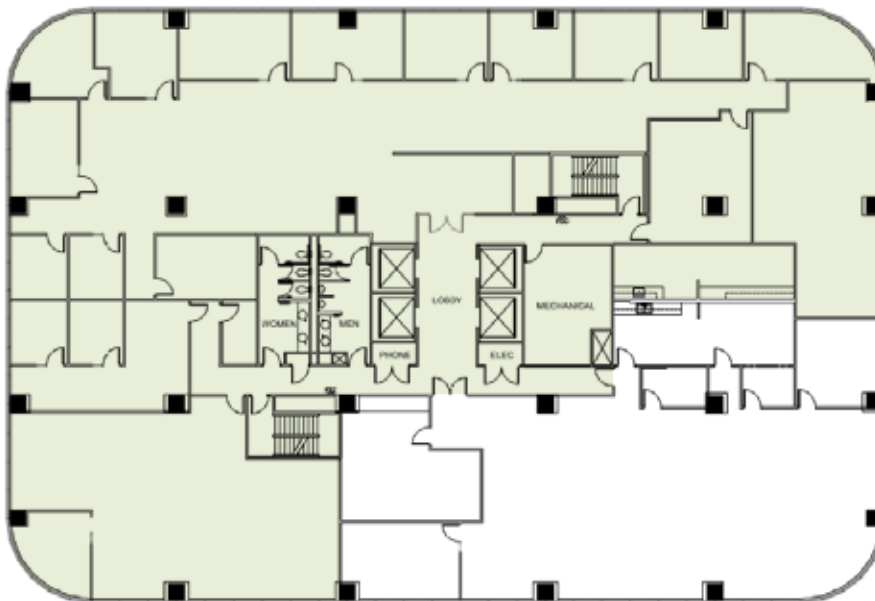
WOODVIEW TOWER

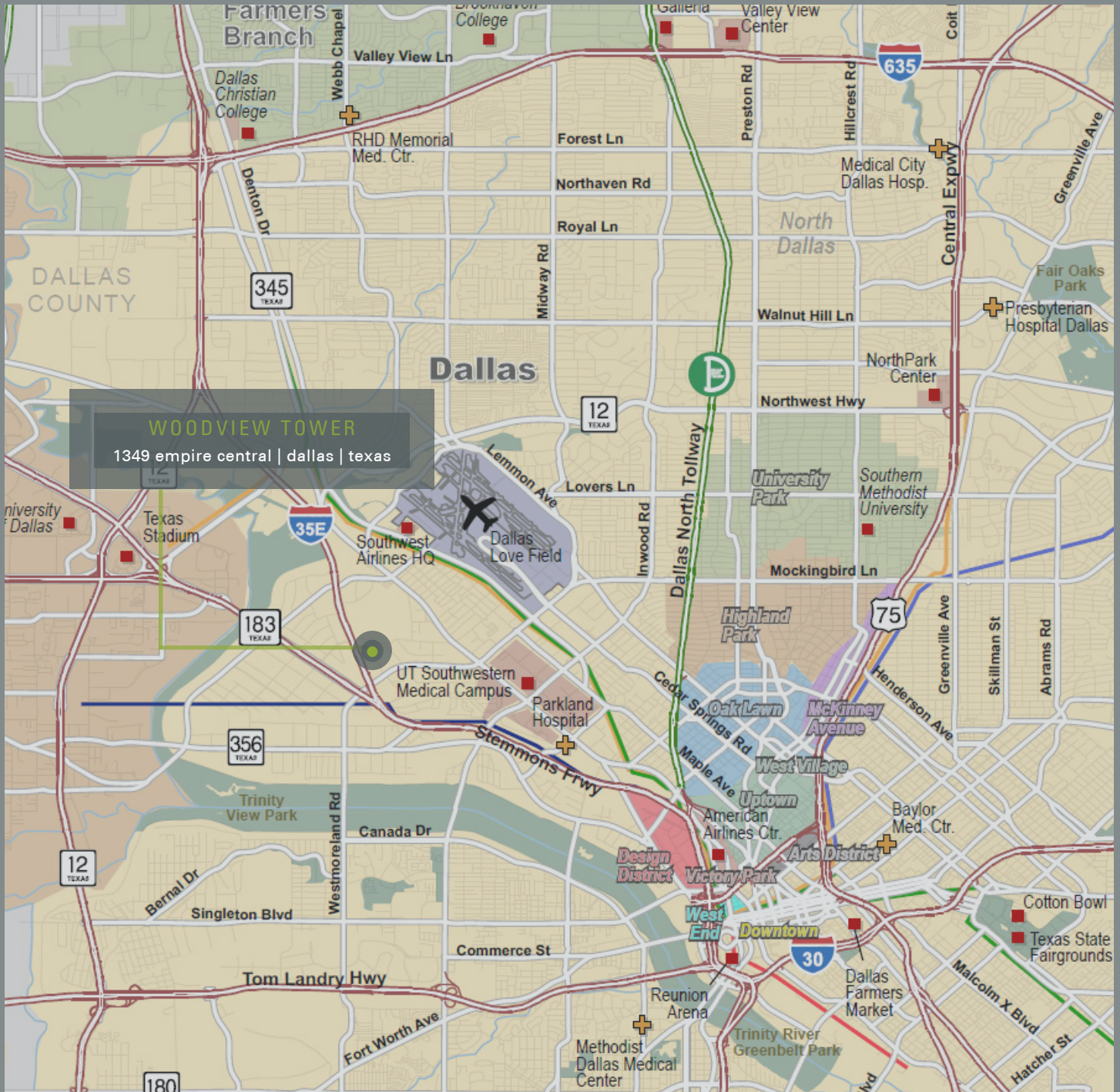
1349 empire central | dallas | texas

4TH FLOOR | 15,431 SF



9TH FLOOR | 10,851 SF





WOODVIEW TOWER
 1349 empire central | dallas | texas

For leasing information, contact:

Blake Shipley
 Vice President
 +1 214 438 6118
 blake.shipley@am.jll.com

Ahnie Gampper
 Associate
 +1 214 438 6376
 ahnie.gampper@am.jll.com

Lindsay Stuckey
 Analyst
 +1 214 438 6570
 lindsay.stuckey@am.jll.com

