

For Lease



Providence Sherwood | Medical Office Building

PROPERTY HIGHLIGHTS

- 2,716 s.f. availability
- \$34.00/s.f. full service
- Parking ratios over 4/1,000
- Exterior signage opportunities
- Walking distance to number retail services and amenities
- Located on Hwy 99 in the heart of the Sherwood retail districts

16770 SW Eddy Rd
Sherwood, OR

Contact:

John C. Lee

Licensed in Oregon & Washington
+1 503 972 8608

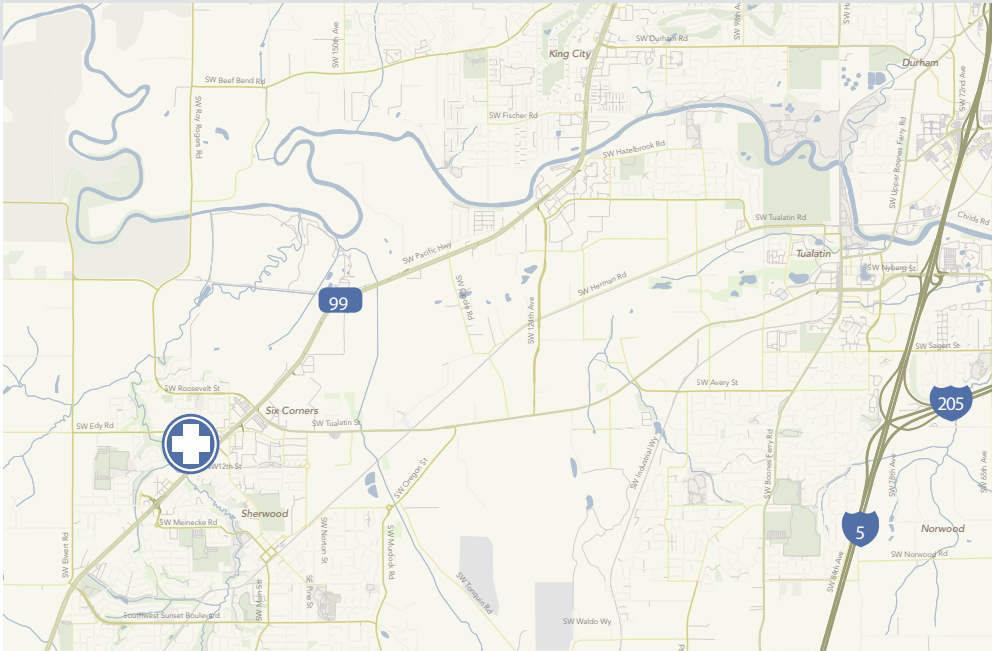
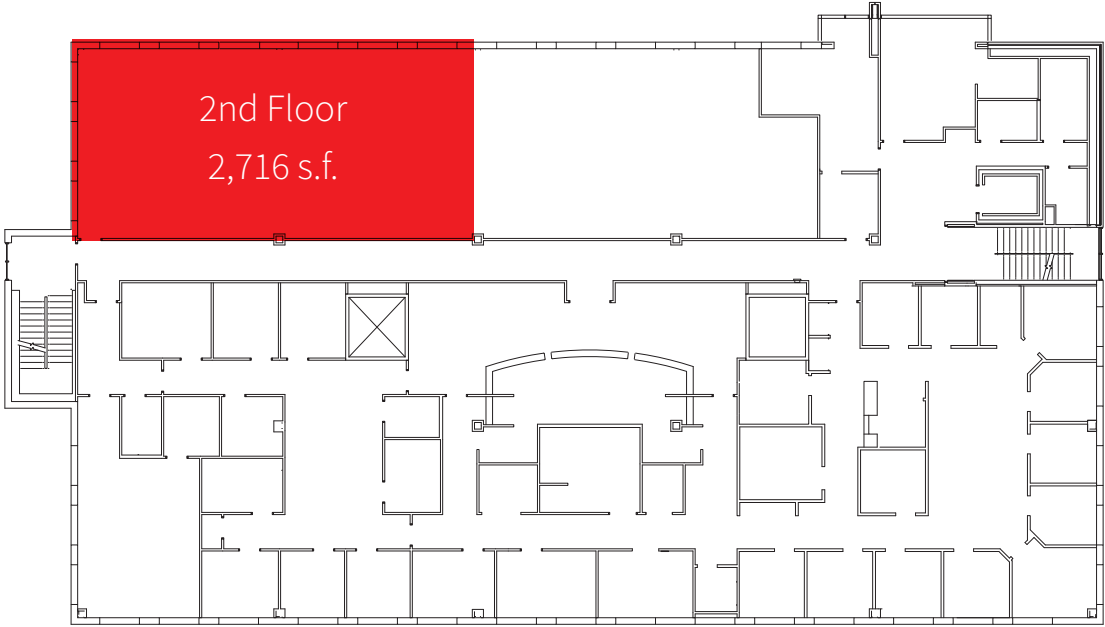
john.c.lee@am.jll.com

Jones Lang LaSalle Brokerage, Inc.

1120 NW Couch St, Suite 500
Portland, OR 97209



Availabilities:



Contact:

John C. Lee
Licensed in Oregon & Washington
+1 503 972 8608
john.c.lee@am.jll.com