

133

south state



 **ATHLETIC APPAREL**





THE OPPORTUNITY

133 S State Street offers retailers a bi-level opportunity with significant branding potential on one of the most prominent shopping corridors in Chicago.

Located two blocks west of Michigan Avenue near the Art Institute of Chicago, the Chicago Symphony Center, and Millennium Park, 133 S State features bustling pedestrian and vehicular traffic from locals to tourists. A two-minute walk from the Adams/Wabash CTA station serving the Brown, Green, Orange, Pink, and Purple Express Lines and across the street from the 1st/State CTA Red Line station (1.5M annual riders), **the site sits at the epicenter of public transit.**

From larger format brands such as AKIRA, DSW, Forever 21, H&M, and Saks Off Fifth to the myriad of smaller national stores, the retail opportunity at 133 S State is situated in the **heart of the Loop's fashion district.**

DEMOGRAPHICS

\$401M
ANNUALLY SPENT ON RETAIL

2M
SF OF STATE ST RETAIL

9K
HOTEL ROOMS

27K
DAILY PEDESTRIANS ALONG STATE ST

\$1B
RETAIL TRADE AREA

3.5M
CTA RIDERS IN 2017: MONROE STATION



OPTION A

FLAGSHIP ON STATE STREET

GF: 5,657 sf
2nd: 5,617 sf
3rd: 5,617 sf
4th: 5,617 sf

TOTAL SF | 22,508

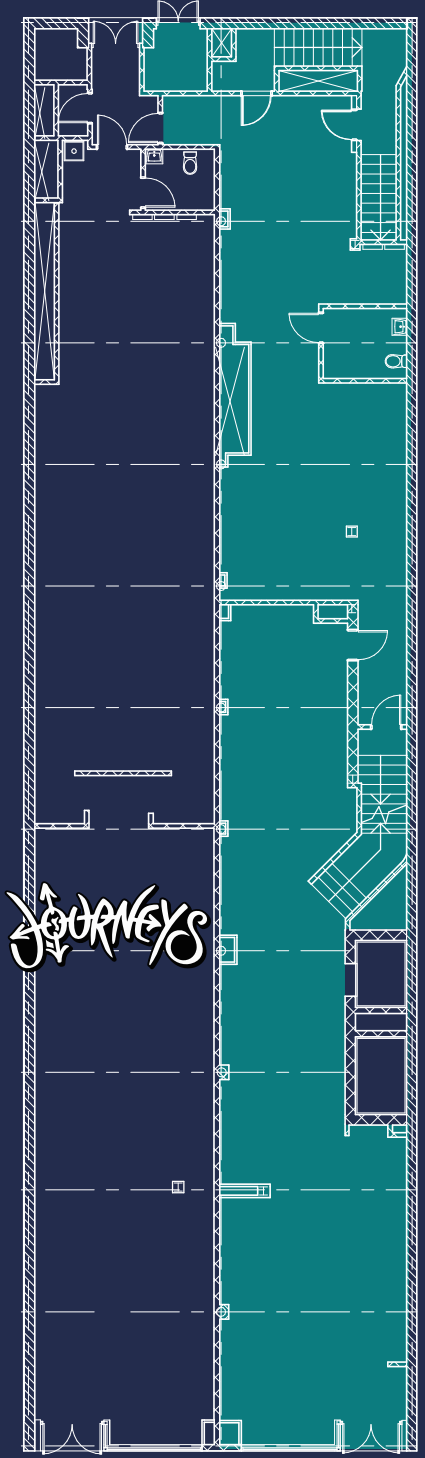
OPTION B

SINGLE TENANT ON TWO LEVELS

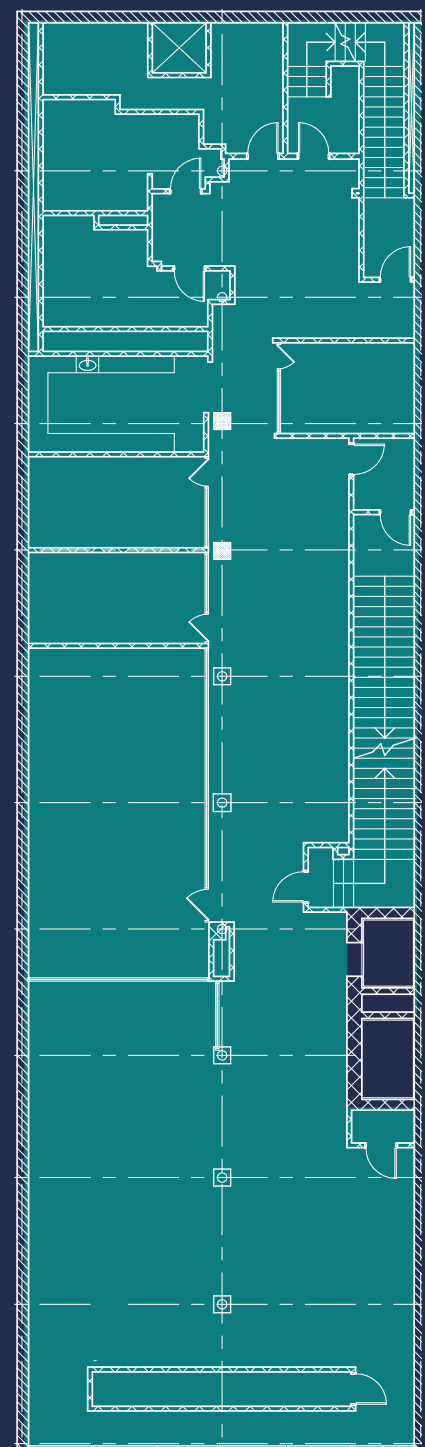
GF: 2,986 sf
2nd: 5,617 sf

TOTAL SF | 8,603

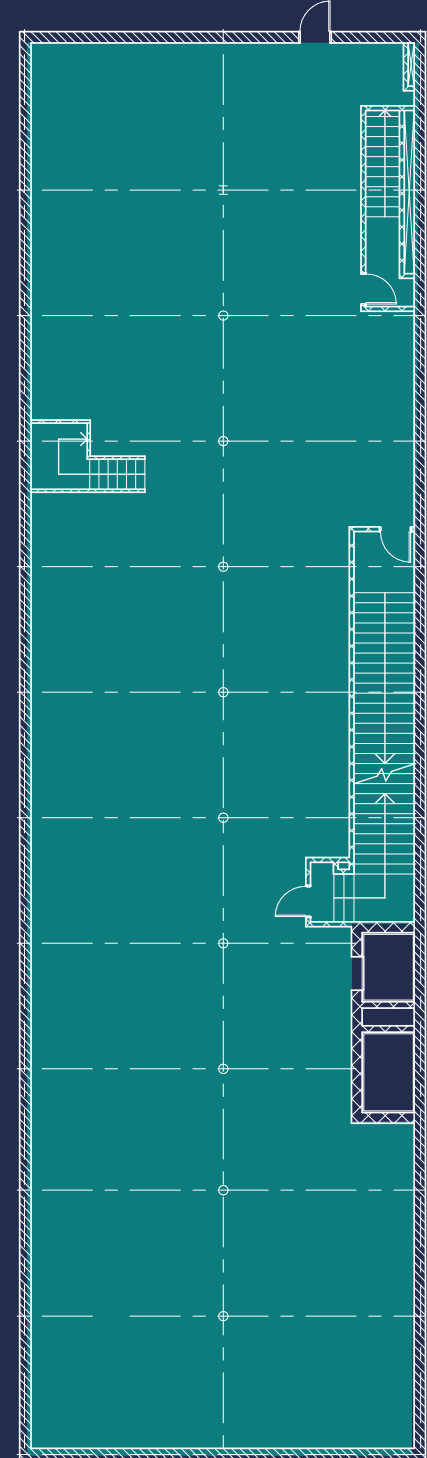
GROUND FLOOR



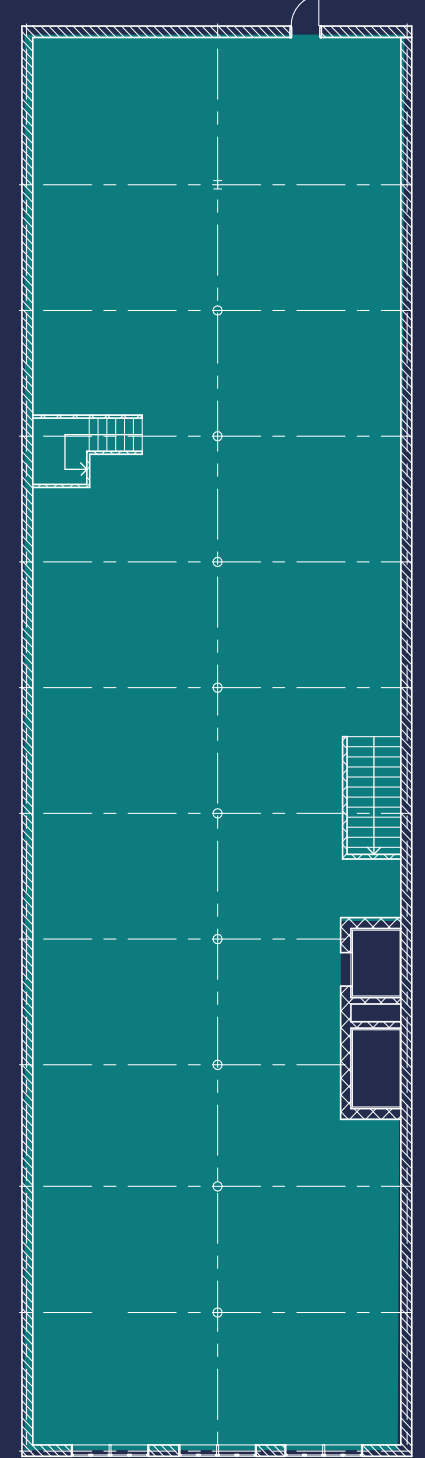
2ND FLOOR PLAN



3RD FLOOR PLAN



4TH FLOOR PLAN



STATE STREET

133

south state



PETER CARUSO

SENIOR VICE PRESIDENT

+1 312 228 2926

PETER.CARUSO@AM.JLL.COM

STEVE SCHWARTZ

SENIOR VICE PRESIDENT

+1 312 228 2157

STEVE.SCHWARTZ@AM.JLL.COM

JOSE GONZALEZ

VICE PRESIDENT

+1 312 228 2155

JOSE.O.GONZALEZ@AM.JLL.COM