

**64640**

**COLUMBIA  
STREET**

**BROOKLYN**

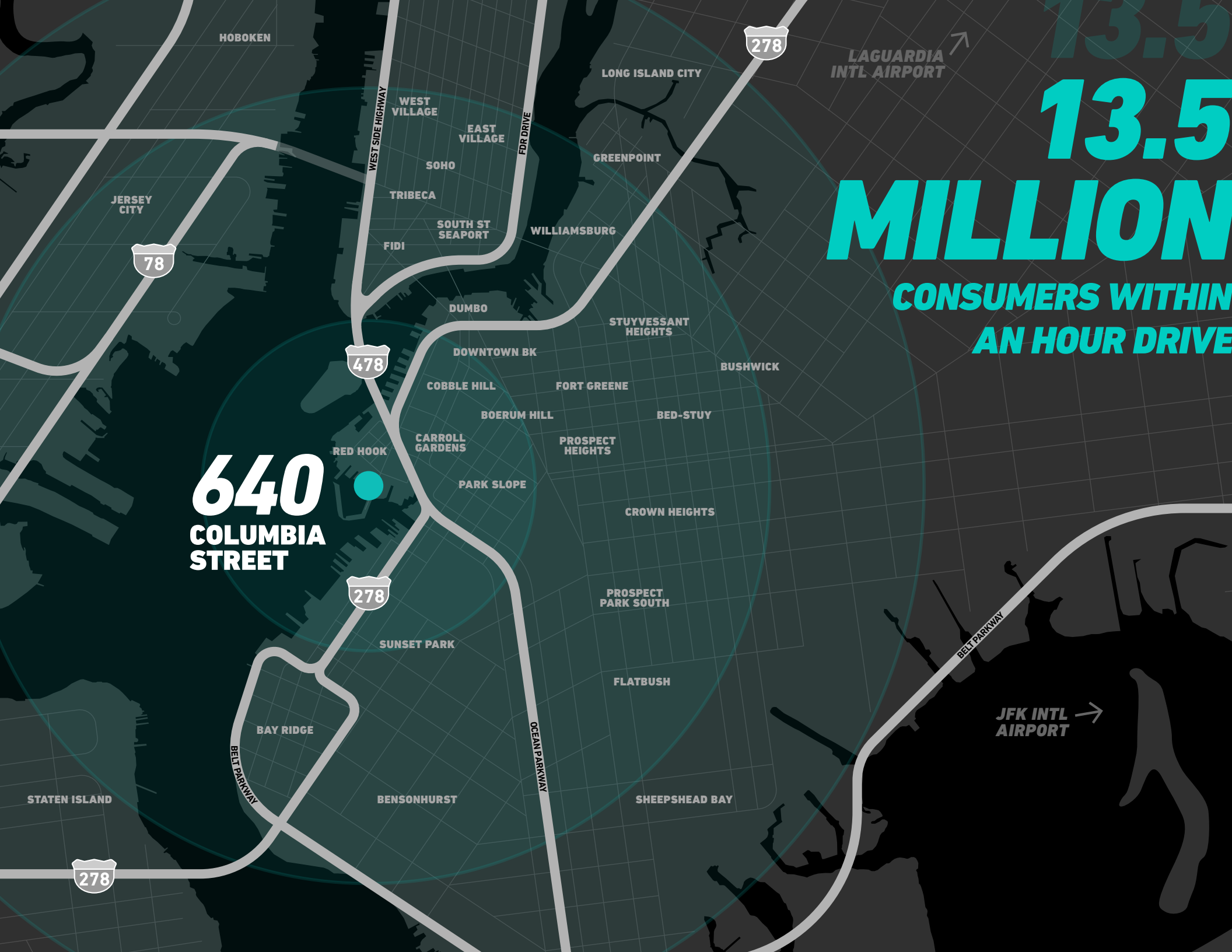
**MEANS GO**



# AS QUICK AS QUICK AS A CLICK

640 Columbia is a three-story, 336,500SF logistics facility in NYC, minutes from Downtown Manhattan, Brooklyn, Queens, and the largest concentration of ecommerce shoppers in the country. Located in Red Hook, Brooklyn, its location allows for the fastest last-mile fulfillment possible.





**640**  
**COLUMBIA**  
**STREET**

**13.5**  
**MILLION**  
**CONSUMERS WITHIN**  
**AN HOUR DRIVE**

HOBOKEN

JERSEY CITY

78

STATEN ISLAND

278

WEST SIDE HIGHWAY

WEST VILLAGE

EAST VILLAGE

SOHO

TRIBECA

SOUTH ST SEAPORT

FIDI

FDR DRIVE

LONG ISLAND CITY

GREENPOINT

WILLIAMSBURG

DUMBO

STUYVESSANT HEIGHTS

DOWNTOWN BK

BUSHWICK

COBBLE HILL

FORT GREENE

BOERUM HILL

BED-STUY

RED HOOK

CARROLL GARDENS

PROSPECT HEIGHTS

PARK SLOPE

CROWN HEIGHTS

278

SUNSET PARK

PROSPECT PARK SOUTH

FLATBUSH

BAY RIDGE

BELT PARKWAY

JFK INTL AIRPORT

BENSONHURST

OCEAN PARKWAY

SHEEPSHEAD BAY

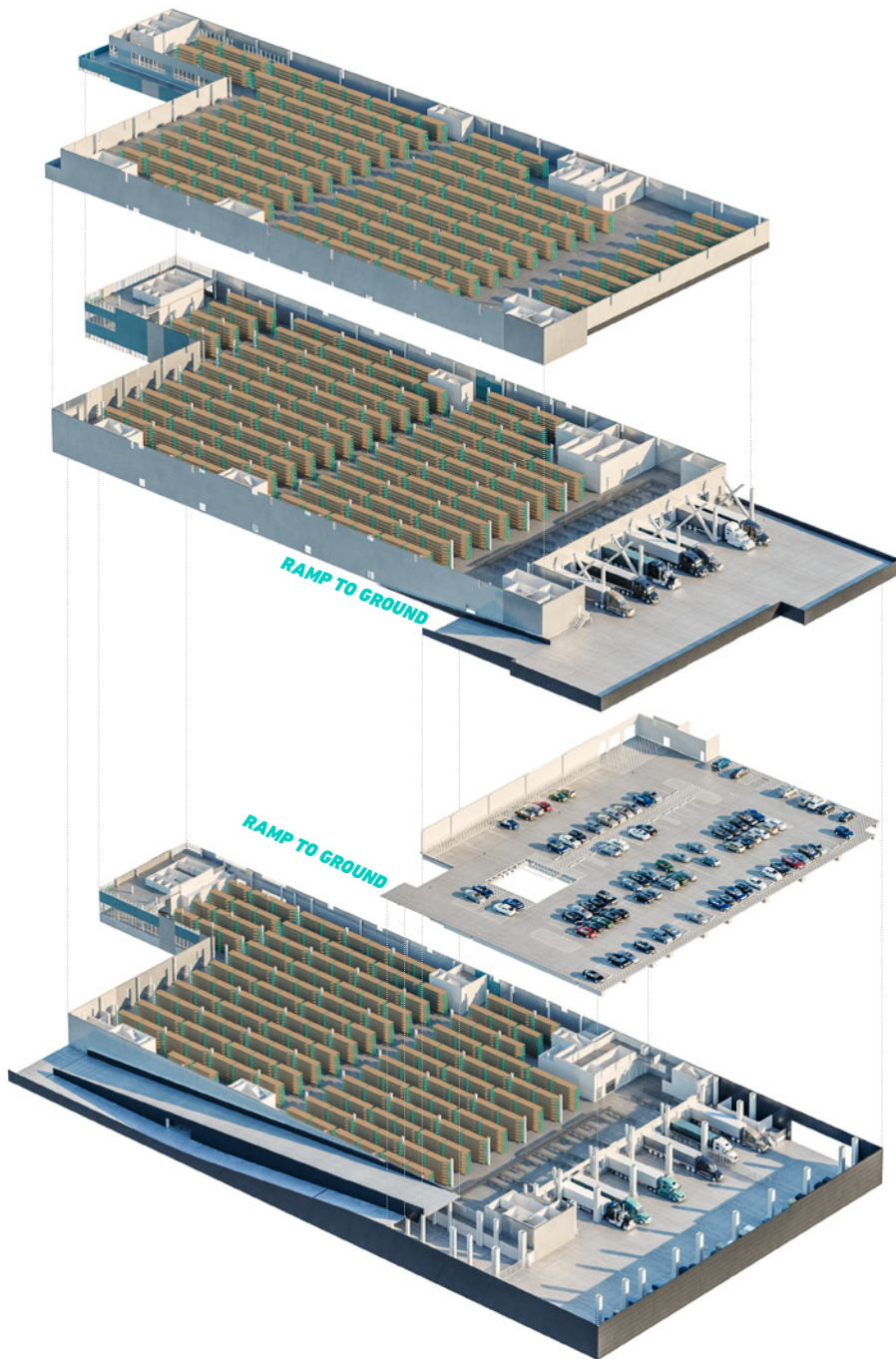
278

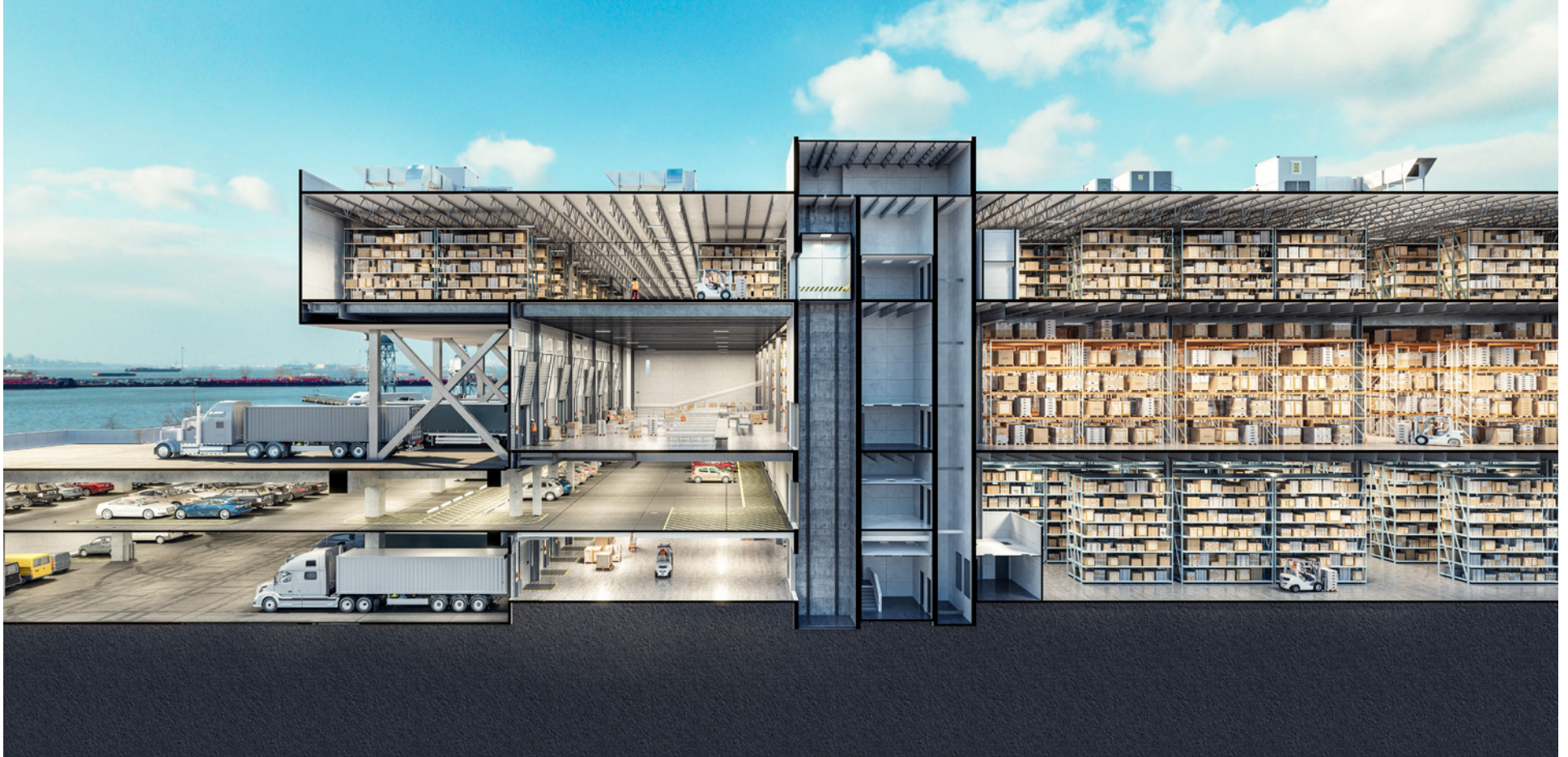
LAGUARDIA INTL AIRPORT

# SAME-DAY SAME-DAY EFFICIENCY

The first multi-story logistics facility on the east coast, 640 Columbia boasts best-in-class architecture and features ramp access to the loading docks on the second floor and a dedicated private elevator servicing the third floor. Scheduled to break ground in Q1 of 2019, 640 Columbia is coming soon.

**SEE THE CROSS SECTION ►**





## **28 DOCKS**

14 Loading Docks on Both  
the First and Second Floors

## **130'**

Truck Court Depth

## **336,500 SF**

Total Square Footage  
Available on 1st, 2nd, & 3rd Floors

## **5 FREIGHTS**

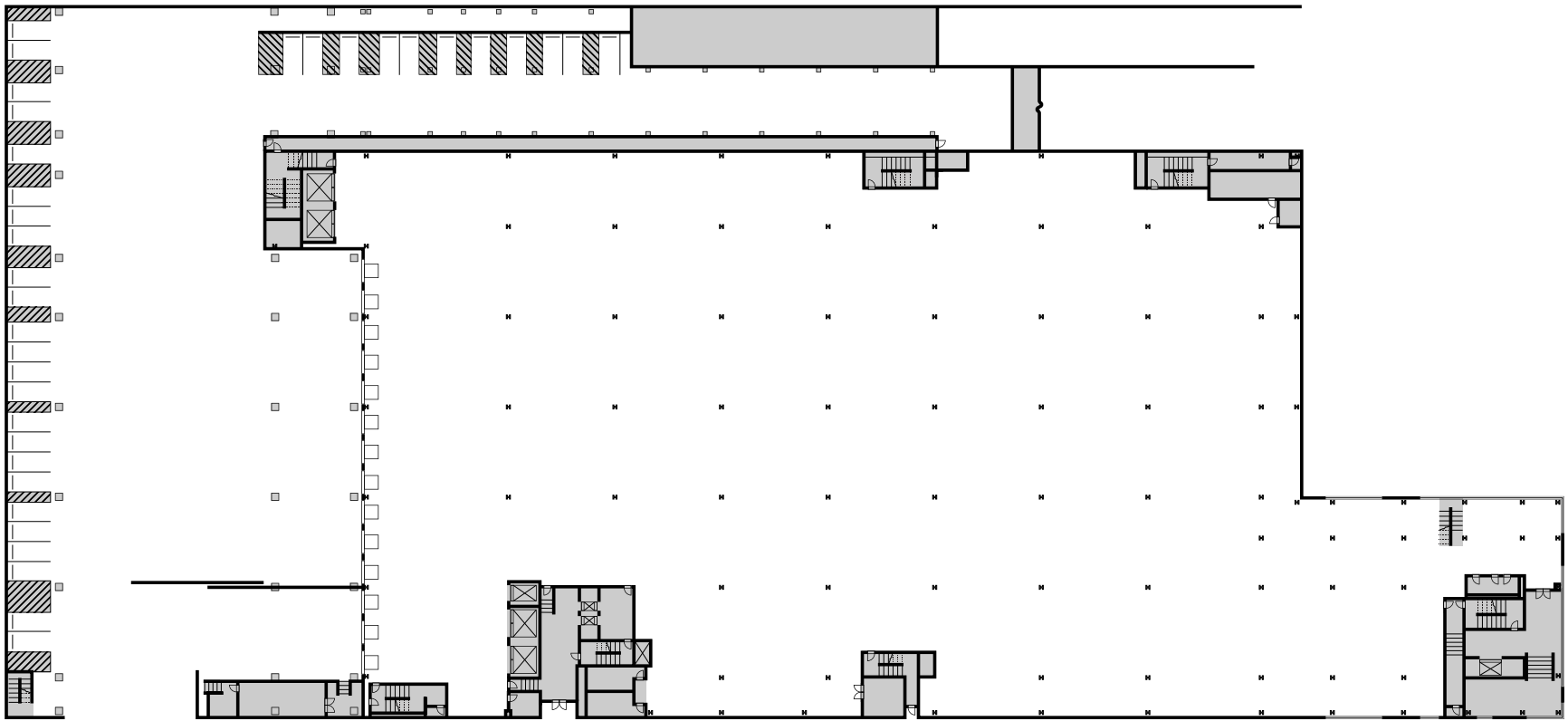
Four Elevators at 14,000lbs Capacity  
and One at 7,000lbs Capacity

## **162**

On-site Parking Spaces

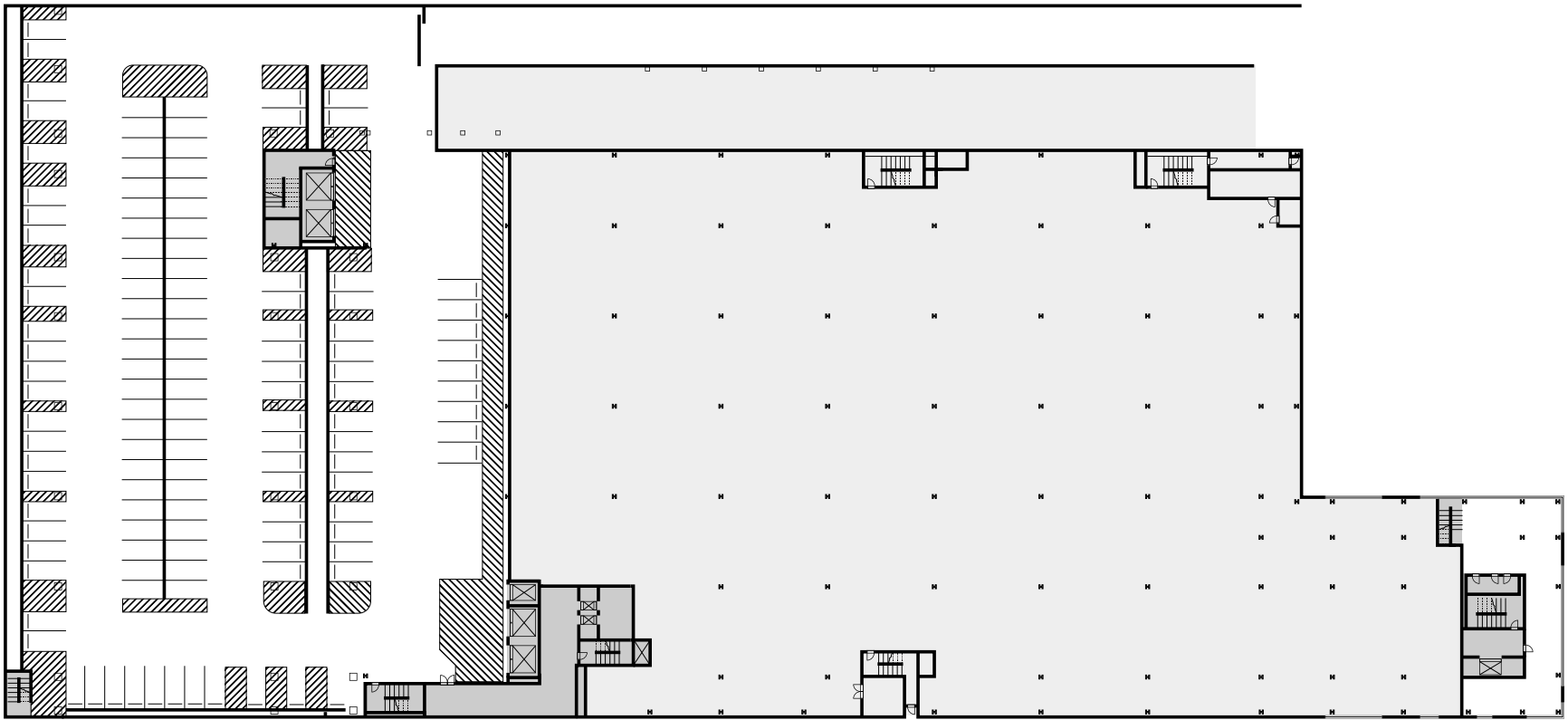
## **397,000 SF**

Total Square Footage  
Including Mezzanine Area



**FIRST**

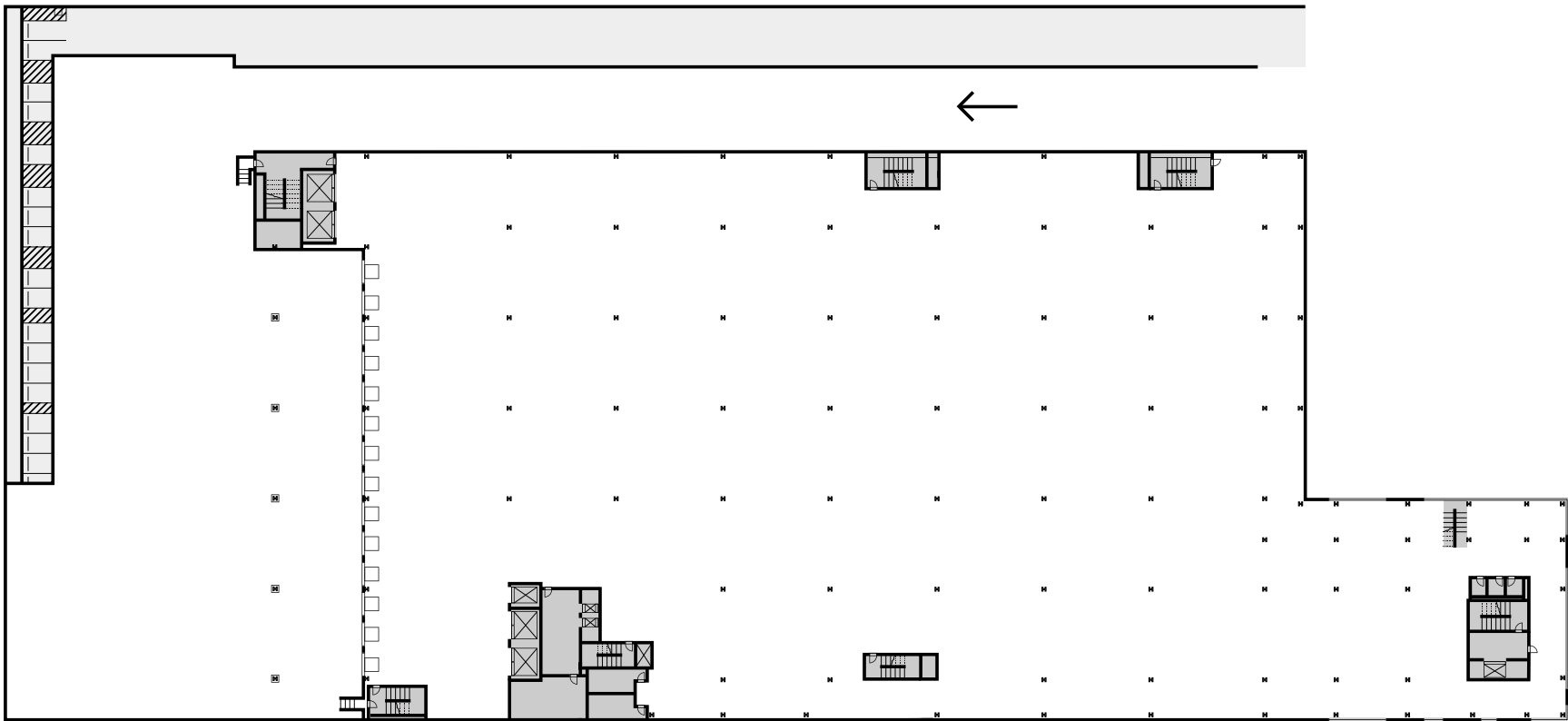
- 112,621 SF
- 28' Ceiling Height
- 35 Parking Spaces
- 14 Loading Docks



**MEZZ**

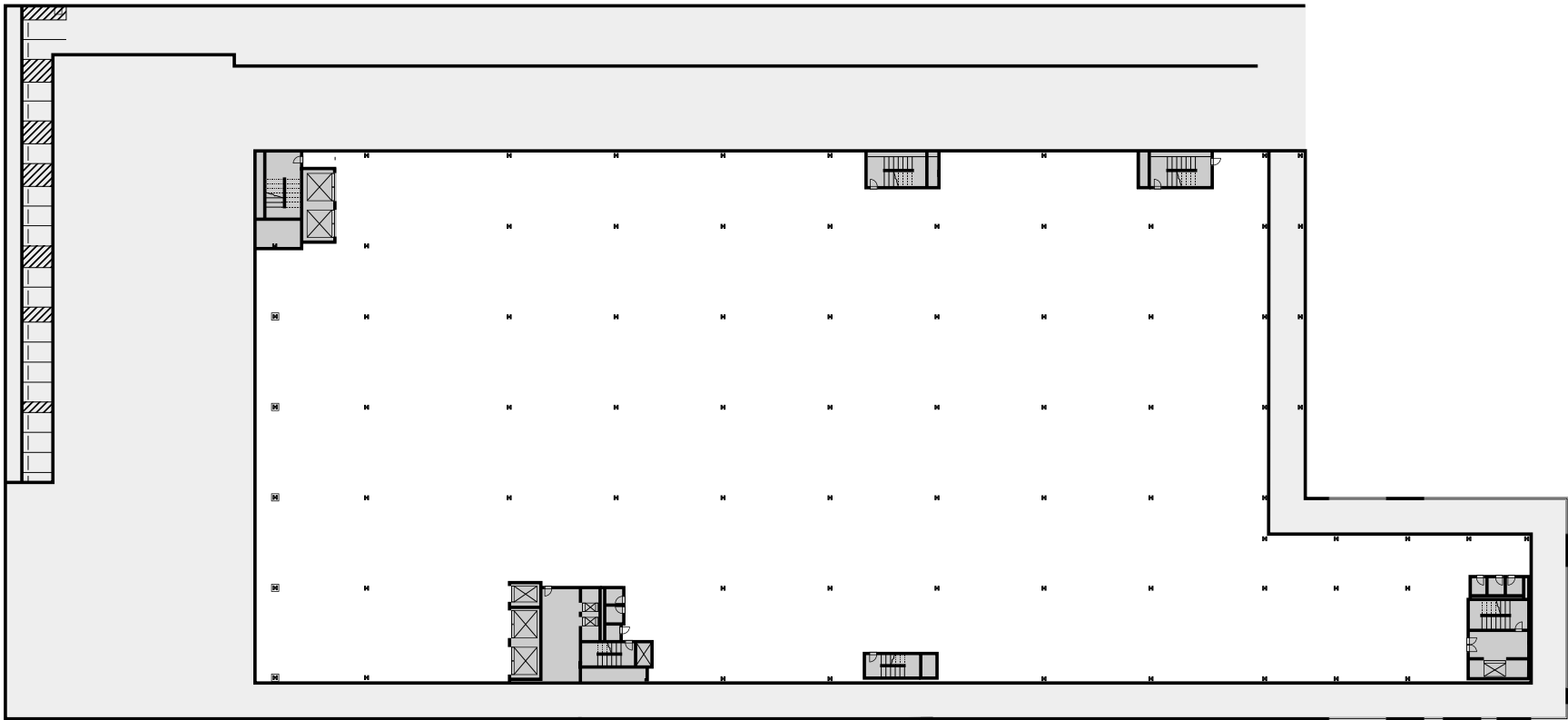
- 60,670 SF  
- 127 Parking Spaces





# ***SECOND***

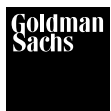
- 115,250 SF
- 28' Ceiling Height
- 14 Loading Docks



**THIRD**

- 108,479 SF
- 18' Ceiling Height
- Direct Freight Elevator Access

# THE FASTEST THE FASTEST LAST MILE



**Asset  
Management**

Goldman Sachs Asset Management (GSAM) Private Real Estate focuses on investing across all major property types spanning the risk and return spectrum, sourcing opportunities in primary and secondary markets. The group employs an active management approach, often partnering with operators or property managers to renovate and rebrand assets. The group is part of GSAM, one of the world's leading investment managers.



DH Property Holdings is a Manhattan based real estate investment and asset management firm with an extensive track record acquiring underperforming assets in, and around, New York City. Founded and led by Dov Hertz in November of 2016, DHPH has acquired properties throughout the NY Metropolitan Area. DHPH is focused on value-add opportunities and innovative projects in all asset classes in the boroughs of NYC.



JLL is a financial and professional services firm that specializes in commercial real estate services and investment management. JLL is in business to create and deliver real value through commercial real estate for clients, shareholders and our own people. In a complex world that is constantly changing, JLL is committed to helping clients understand and navigate the intricacies of commercial real estate.

CLICK HERE  
CLICK HERE  
CLICK HERE  
CLICK HERE  
CLICK HERE  
CLICK HERE  
CLICK HERE  
CLICK HERE  
CLICK HERE  
CLICK HERE  
CLICK HERE  
CLICK HERE  
CLICK HERE  
CLICK HERE  
CLICK HERE  
CLICK HERE  
CLICK HERE  
CLICK HERE  
CLICK HERE  
CLICK HERE  
CLICK HERE

For leasing information, please contact:

CLICK HERE  
CLICK HERE  
CLICK HERE  
CLICK HERE  
CLICK HERE  
CLICK HERE  
CLICK HERE  
CLICK HERE  
CLICK HERE  
CLICK HERE  
CLICK HERE  
CLICK HERE

**ROB KOSSAR**

Vice Chairman  
212 292 7593  
rob.kossar@am.jll.com

**LESLIE LANNE**

Managing Director  
212 292 7597  
leslie.lanne@am.jll.com

**640COLUMBIA.COM**

CLICK HERE  
CLICK HERE