

# Land for Sale

**±4.91 acres available in prime Galleria location**

## 2660 Fountain View Drive (former H-E-B)

Houston, Texas

Simmi Jaggi  
 Managing Director  
 +1 713 888 4098  
[simmi.jaggi@am.jll.com](mailto:simmi.jaggi@am.jll.com)

Elizabeth Clampitt  
 Senior Vice President  
 +1 713 888 4075

Barrett Von Blon  
 Associate  
 +1 713 425 1861  
[barrett.vonblon@am.jll.com](mailto:barrett.vonblon@am.jll.com)



Simmi Jaggi  
 Managing Director  
 +1 713 888 4098  
[simmi.jaggi@am.jll.com](mailto:simmi.jaggi@am.jll.com)

Elizabeth Clampitt  
 Senior Vice President  
 +1 713 888 4075

Barrett Von Blon  
 Associate  
 +1 713 425 1861

[elizabeth.clampitt@am.jll.com](mailto:elizabeth.clampitt@am.jll.com) [barrett.vonblon@am.jll.com](mailto:barrett.vonblon@am.jll.com)





# Prime Galleria Development Opportunity

## Location

2660 Fountain View Drive | Houston, Texas 77057

## Land Size

Approximately 4.91 acres

## Property Information

51,527 s.f. building

Located in the Galleria area at the intersection of Westheimer Road and Fountain View Drive

No zoning

## Price

Call broker for pricing



Estimated Population

| 1-mile | 3-miles | 5-miles |
|--------|---------|---------|
| 32,615 | 207,850 | 490,304 |



Average Household Income

| 1-mile   | 3-miles  | 5-miles   |
|----------|----------|-----------|
| \$78,961 | \$96,320 | \$102,732 |



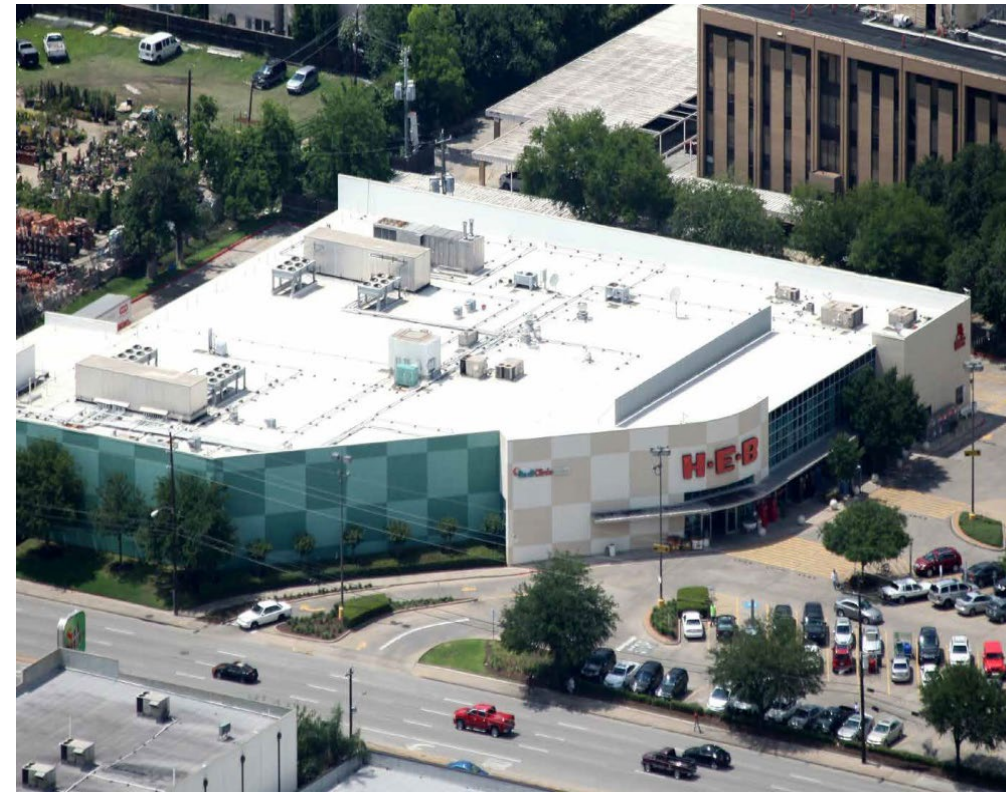
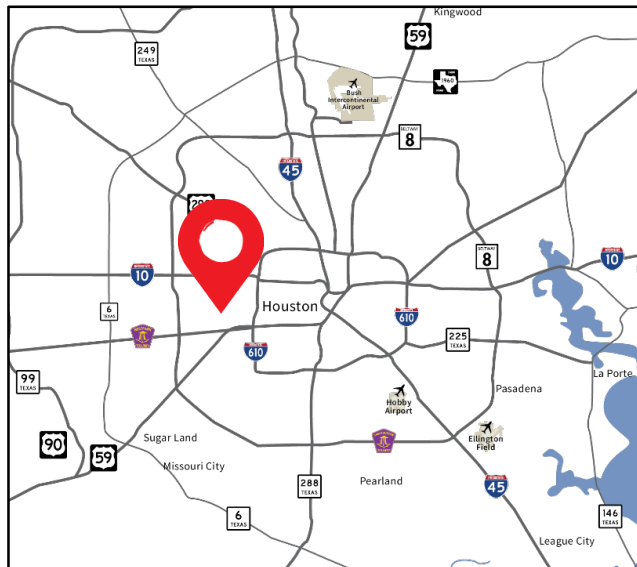
Median Age

| 1-mile | 3-miles | 5-miles |
|--------|---------|---------|
| 33.4   | 34.0    | 35.0    |



Traffic Counts

- 19,230 VPD Fountain View, north of Westheimer
- 20,430 VPD Fountain View, south of Westheimer
- 60,870 VPD Westheimer, east of Fountain View
- 171,000 VPD Westheimer, west of Fountain View



### DISCLAIMER

The information contained herein is obtained from sources believed to be reliable. However, Jones Lang LaSalle makes no guarantees, warranties or representations as to the completeness or accuracy thereof. The presentation of this property is submitted subject to errors, omissions, change of price or conditions, and is subject to prior sale, lease or withdrawal without notice.