



# For Sublease

## Fifth & Pine Building

- ±12,471 RSF or ±15,065 RSF on floor 4
- Sublease through January 31, 2022
- Aggressive below market rents
- Open creative space
- Furniture available
- Abundant natural light
- Great views
- High end finishes
- Bike storage and shower and locker facilities
- Steps from Westlake Center, Pacific Place, and Westlake Park
- Minutes from local attractions such as the Seattle Great Wheel, The 5th Avenue Theatre, Seattle Public Library, and Seattle Art Museum
- Buses, lightrail, and monorail within one block

**413 Pine St  
Seattle, WA**

**Mark Fox**

+1 206 521 2677

[mark.fox@am.jll.com](mailto:mark.fox@am.jll.com)

**Clay Nielsen**

+1 206 521 2664

[clay.nielsen@am.jll.com](mailto:clay.nielsen@am.jll.com)

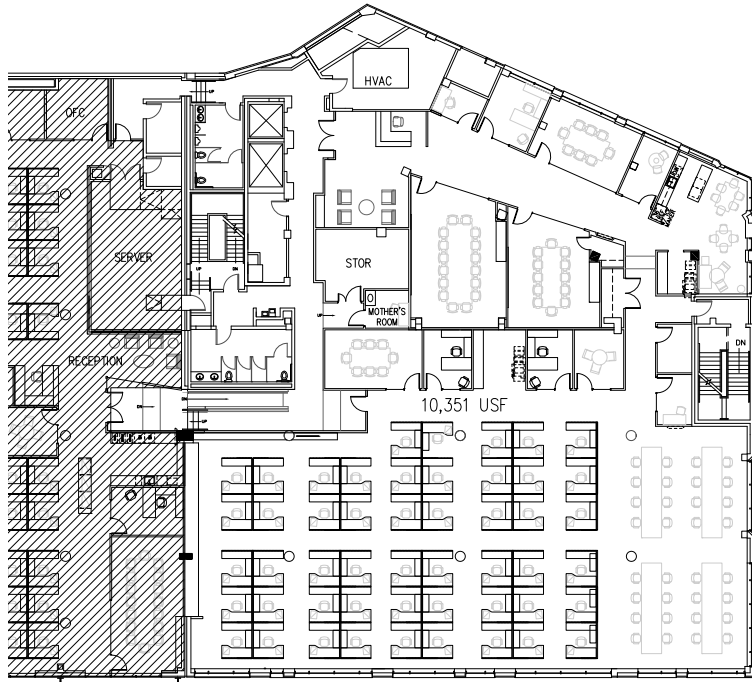
**Charlie Malley**

+1 206 607 1761

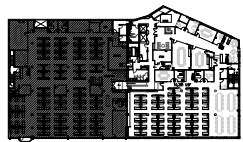
[charlie.malley@am.jll.com](mailto:charlie.malley@am.jll.com)

## ± 12,471 RSF on floor 4

- Immediately available
- Off elevator lobby exposure
- 5 private offices & 4 conference rooms

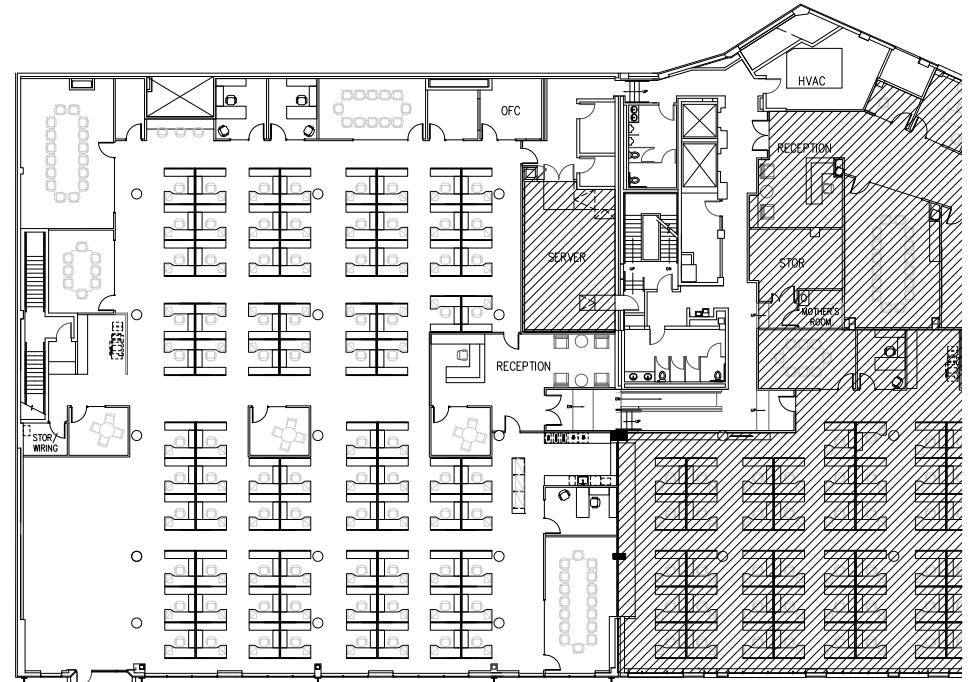


V

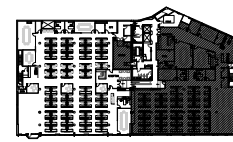


## ± 15,065 RSF on floor 4

- Available with 30 days notice
- Private deck
- 4 conference rooms & 8 private offices



V



### DISCLAIMER

Although information has been obtained from sources deemed reliable, Owner, Jones Lang LaSalle, and/or their representatives, brokers or agents make no guarantees as to the accuracy of the information contained herein, and offer the Property without express or implied warranties of any kind. The Property may be withdrawn without notice. If the recipient of this information has signed a confidentiality agreement regarding this matter, this information is subject to the terms of that agreement. ©2017. Jones Lang LaSalle. All rights reserved.

