



# Land for Sale

**±40 acres available**

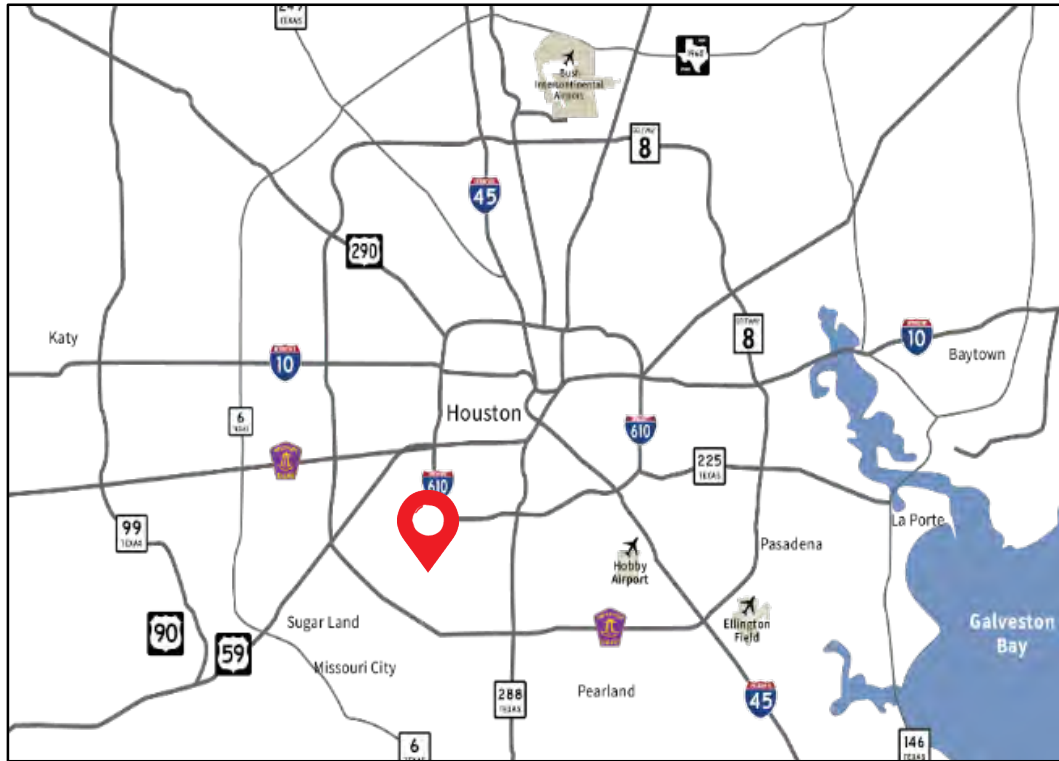
12631 S. Main Street

Houston, TX 77035





# 12631 S. Main Street



## Location

SWQ of S. Main Street and S. Post Oak Road at South Main Street frontage road, just west of the major S. Post Oak Road thoroughfare.

## Size

±40 acres; will divide

## Highest & Best Use

Industrial, multi-family, residential

## Access & Visibility

Excellent visibility off South Main Street (US Alt 90) and;  
Access curb cut in place off of South Main Street frontage road and W. Airport extension.

## Drive Times

Site to Beltway 8 6 miles / ±10 minutes  
Site to 610 3 miles / ±6 minutes

## Utilities

Utilities available to site

## Detention

On site detention required

## Price

Call broker for pricing



Estimated Population

1-mile	3-miles	5-miles
15,061	138,548	379,605



Average Household Income

1-mile	3-miles	5-miles
\$56,223	\$77,650	\$83,881



Area Traffic Counts

58,320 VPD
S. Main Street at Palmcrest Street
43,971 VPD
S. Post Oak Road at San Pablo Street
43,860 VPD
S. Main Street east of S. Post Oak Road
44,030 VPD
S. Post Oak Road north of S. Main Street



Number of Households

1-mile	3-miles	5-miles
4,254	48,607	134,517

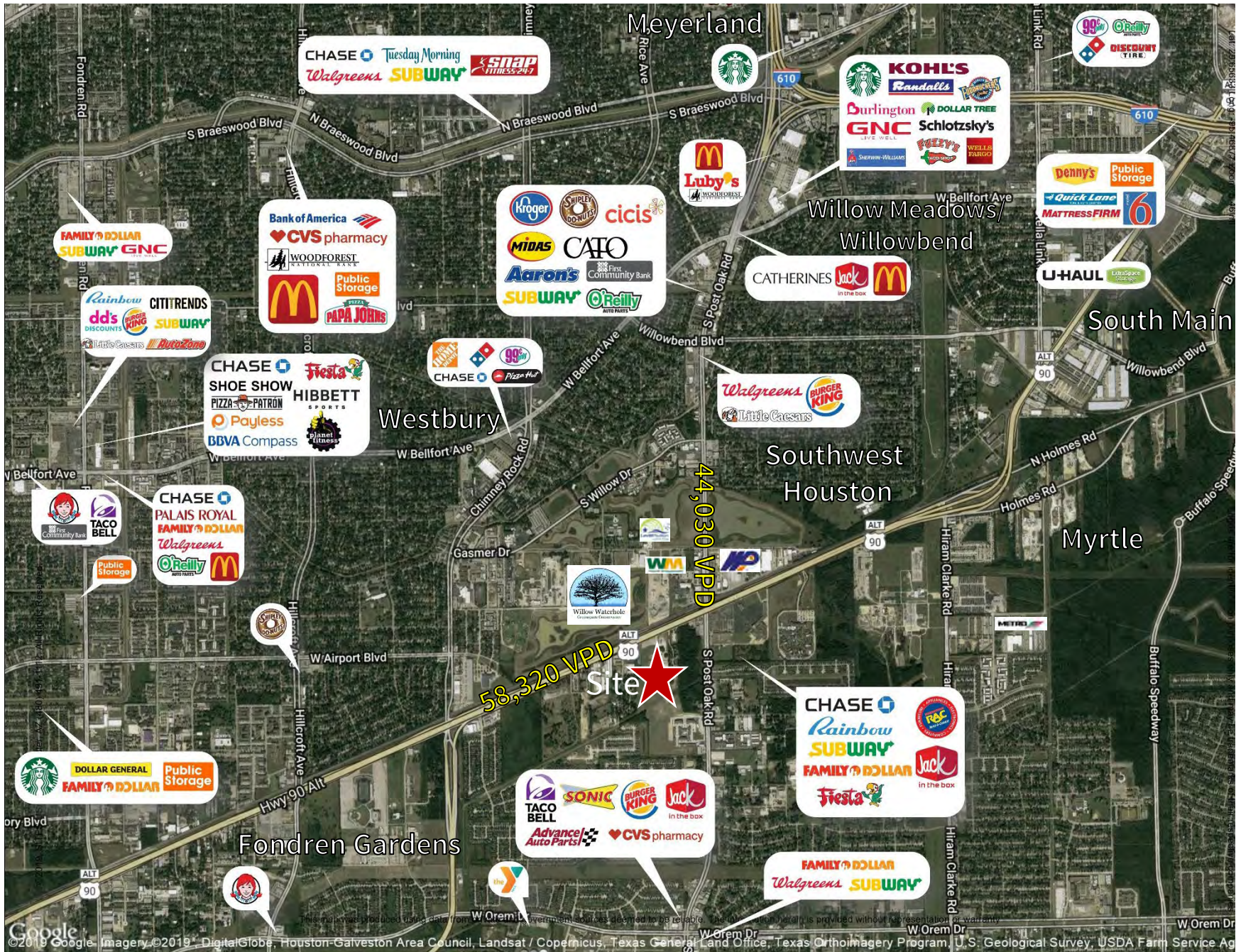


Median Age

1-mile	3-miles	5-miles
30.4	33.6	33.1

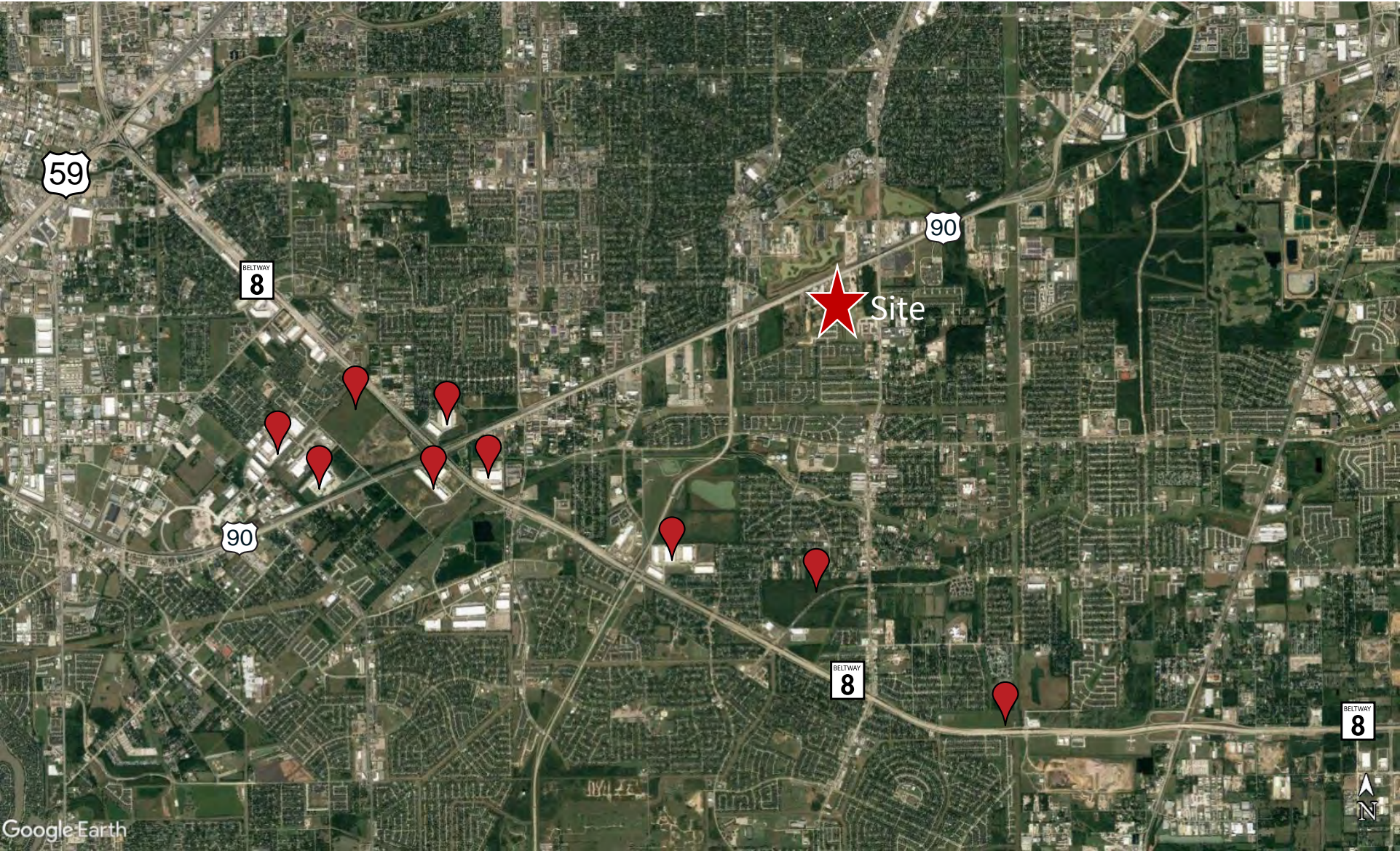
±40 acres available at 12631 S. Main Street









# Area Industrial Parks

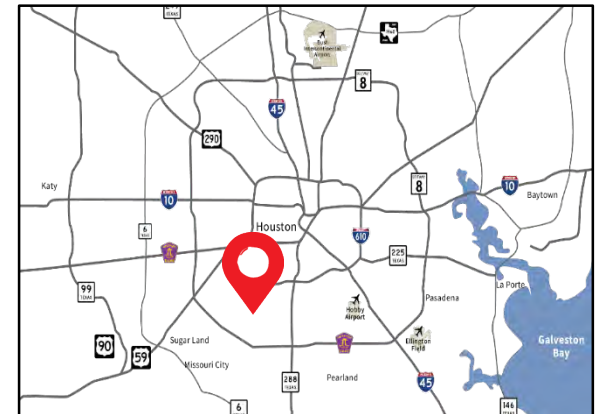
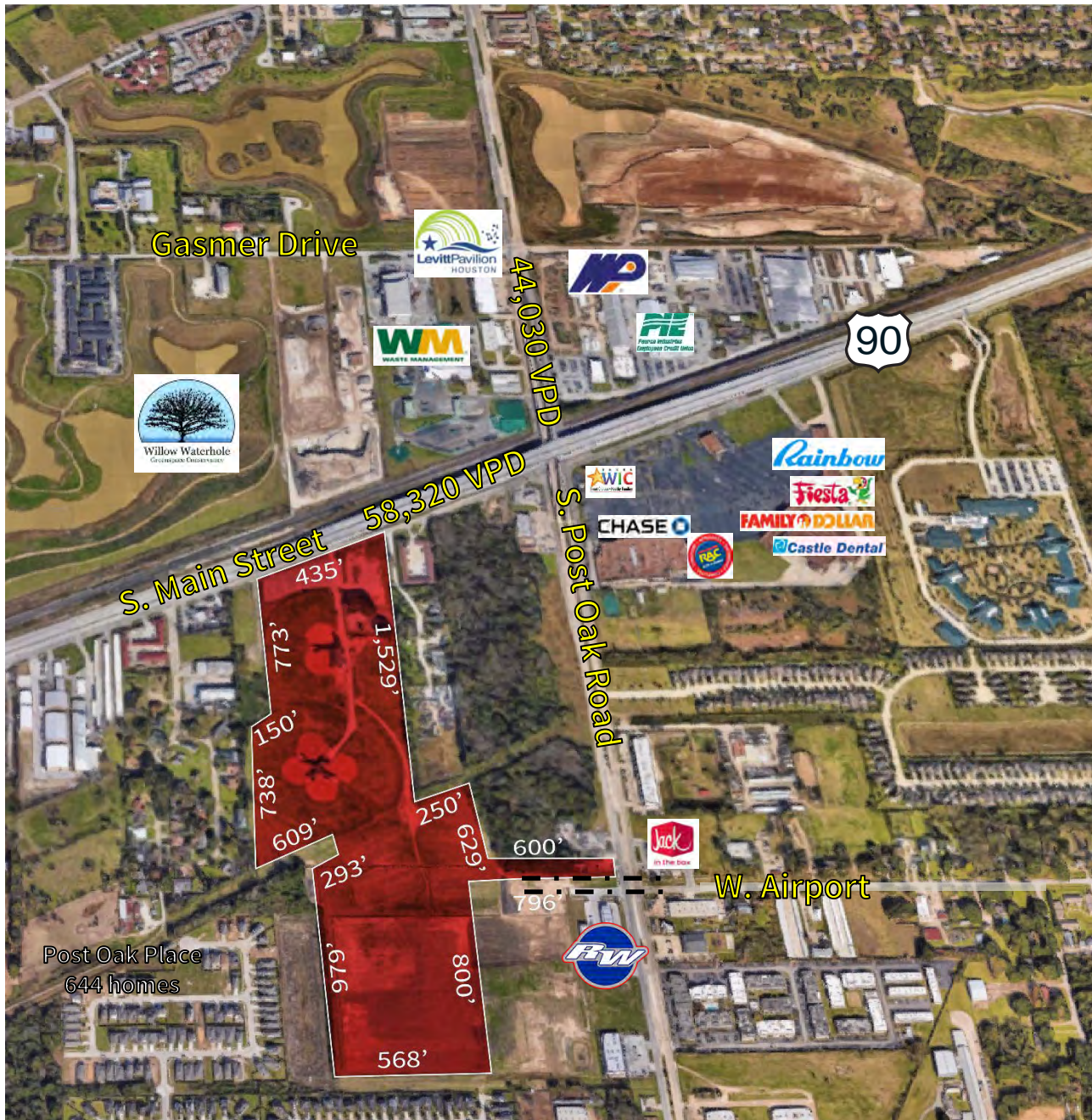


 Site is accessible to Beltway 8 from both S. Main and S. Post Oak, and is 6 minutes from 610

 Existing or proposed industrial



12631 S. Main Street



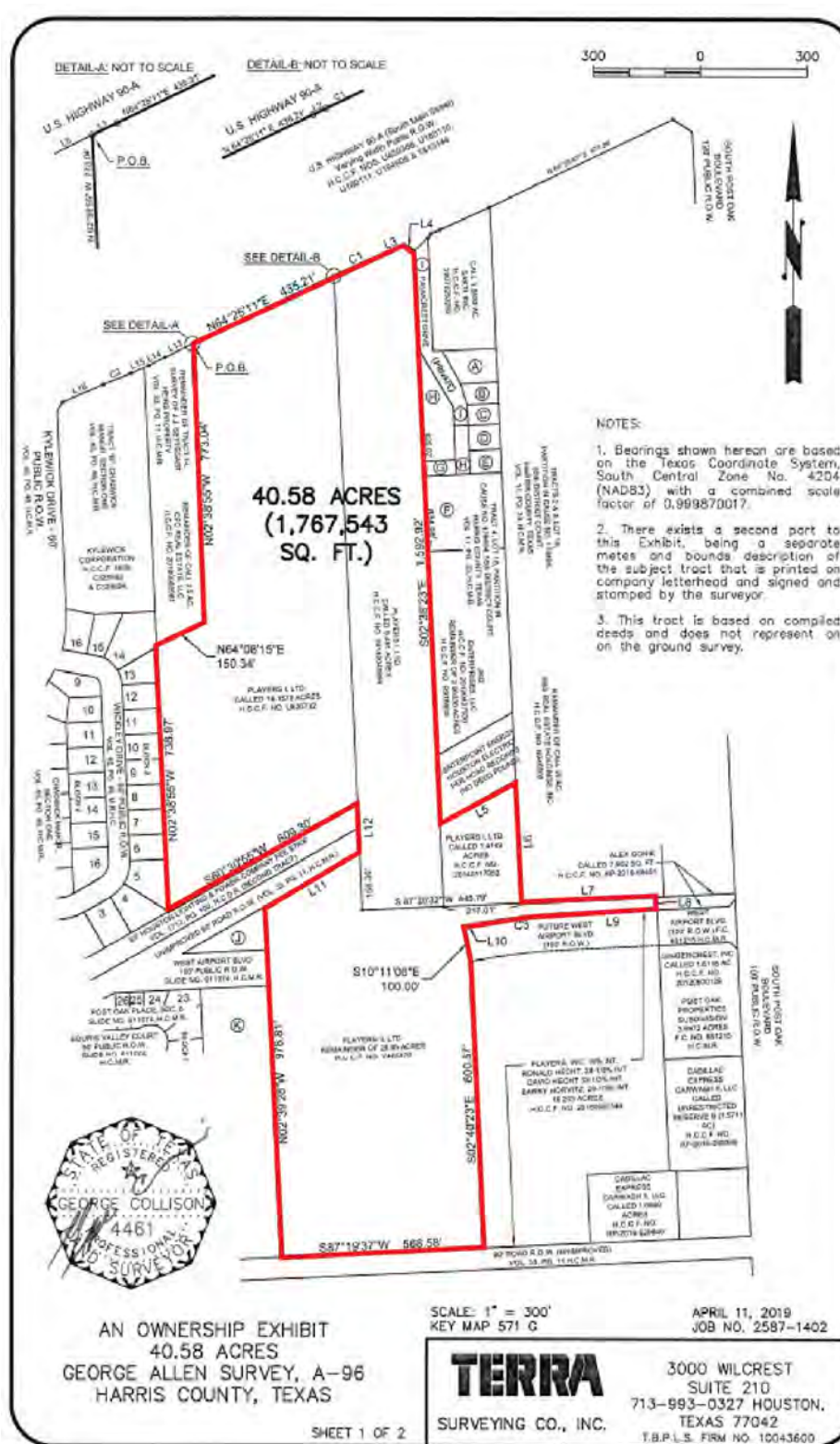
## Contact Us

**David Buescher**  
 Senior Vice President  
 +1 713 888 4016  
 david.buescher@am.jll.com

**Chris Bergmann Jr.**  
 Vice President  
 +1 713 425 5868  
 chris.bergmann@am.jll.com



# Survey



## Contact Us

**David Buescher**  
Senior Vice President  
+1 713 888 4016  
david.buescher@am.jll.com

**Chris Bergmann Jr.**  
Vice President  
+1 713 425 5868  
chris.bergmann@am.jll.com