



# For Sale

**\$1,900,000 (\$295.00/SF)**

## Highlights

- Building Size: 6,422 SF
- Lot Size: .12 SC/ 5,227 SF
- Zoning: CS (General Commercial)
- Year Built: 1982
- Potential lease back of 3rd floor
- Elevator served
- New roof
- Upgraded mechanical & HVAC
- 10 off street parking stalls
- Building signage opportunity with 5,200 VPD

## Stand Alone Owner/User Office Building

140 SW Arthur St, Portland OR 97201



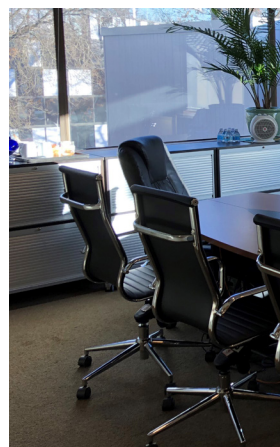
**Sean Turley**  
*Licensed in OR*  
T: +1 503 937 2102  
sean.turley@am.jll.com

**Mike Malone**  
*Licensed in OR*  
T: +1 503 972 8609  
mike.malone@am.jll.com

Jones Lang LaSalle Brokerage, Inc.  
1120 NW Couch Street, Suite 500  
Portland, OR 97209  
T: +1 503 972 8000

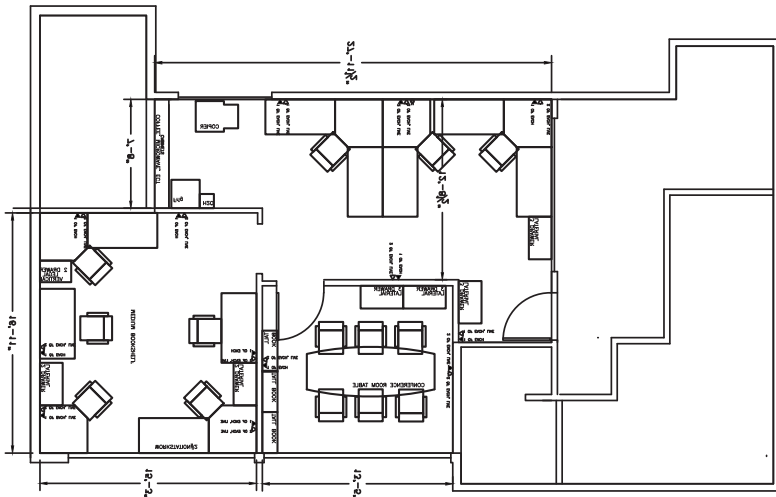


*Prime South  
CBD Location*

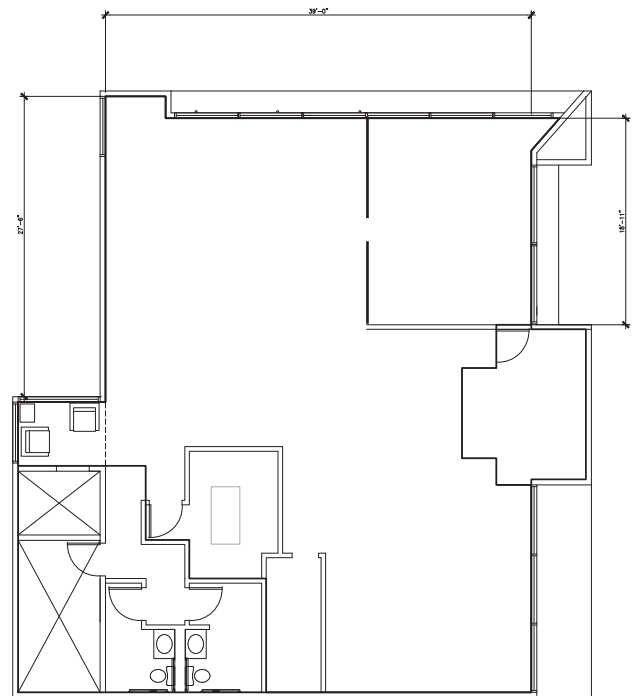




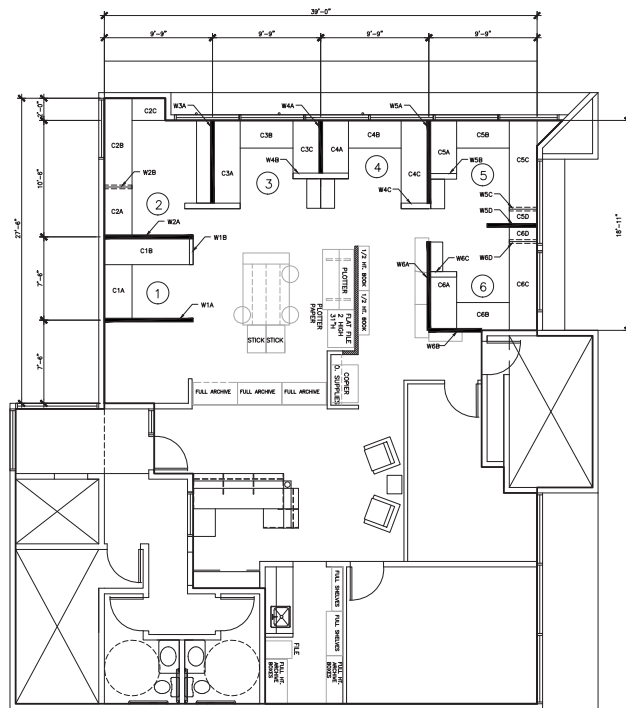
# Floor Plans



**1st Floor**



**3rd Floor**



**2nd Floor**



**Sean Turley**  
 Licensed in OR  
 T: +1 503 937 2102  
 sean.turley@am.jll.com

**Mike Malone**  
 Licensed in OR  
 T: +1 503 972 8609  
 mike.malone@am.jll.com

Jones Lang LaSalle Brokerage, Inc.  
 1120 NW Couch Street, Suite 500  
 Portland, OR 97209  
 T: +1 503 972 8000