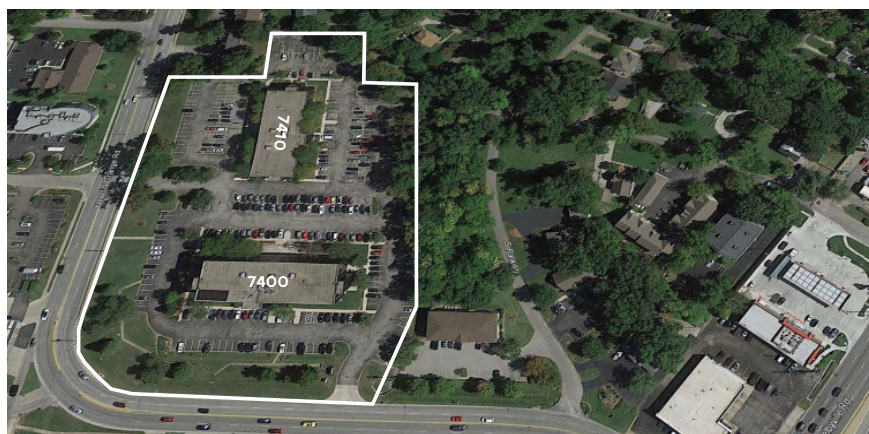


# For Lease

Norwood Office Park  
7400 & 7410 New LaGrange Road  
Louisville, Kentucky 40222

Office suites available



## Property Highlights

- Excellent east end location with easy access to the Watterson Expressway
- Within minutes to Interstate-71 and Interstate-64
- Competitive rental rates
- Abundant parking
- In close proximity to area amenities including retail, dining and consumer services
- Located less than 10 miles from Louisville's Central Business District

## For more information contact:

**Douglas H. Owen, SIOR**  
+1 502 394 2516  
[doug.owen@am.jll.com](mailto:doug.owen@am.jll.com)

**Patrick J. Richardson, CCIM**  
+1 502 394 2515  
[pat.richardson@am.jll.com](mailto:pat.richardson@am.jll.com)

[jll.com/louisville](http://jll.com/louisville)



For Lease



### 7400 New LaGrange Road

- Four-story office building with suites ranging from 910 - 1,214 s.f.
- Ample natural light throughout the entire building
- **Suite 303:** 1,214 s.f.
  - Two restrooms in space
  - Kitchen with sink
  - Open room with two private offices
- **Suite 305:** 910 s.f.
  - Built-in cubicles
  - Water available in space



### 7410 New LaGrange Road

- Three-story office building with first floor suite available
- Ample natural light throughout the entire building
- **Suite 125:** 795 s.f.
  - Corner suite with reception glass window
  - Small consultation rooms

For more information, contact:

Douglas H. Owen, SIOR  
+1 502 394 2516  
doug.owen@am.jll.com

Patrick J. Richardson, CCIM  
+1 502 394 2515  
pat.richardson@am.jll.com

#### DISCLAIMER

©2018 Jones Lang LaSalle IP, Inc. All rights reserved. All information contained herein is from sources deemed reliable; however, no representation or warranty is made to the accuracy thereof.