

T
O
W
E
R

2121

PLAZA

CLASS A OFFICE PROJECT

2121 S El Camino Real, San Mateo



TIM GRANT

Direct: 650.480.2124
tim.grant@am.jll.com
CA License #: 00674597

CHELSEY WILLIAMS

Direct: 650.480.2143
chelsey.williams@am.jll.com
CA License #: 02027067

TOSS VALLENTINE

Direct: 650.480.2133
toss.valentine@am.jll.com
CA License #: 01742629

MARK BODIE

Direct: 650.480.2212
mark.bodie@am.jll.com
CA License #: 01941415



PROPERTY HIGHLIGHTS

- Project fitness center with showers and lockers
- Dedicated food service
- Security and property management onsite
- Free parking garage
- Outdoor BBQ area with bocce ball court
- Onsite secure storage available
- Bicycle storage locker
- Courtyard collaborative areas with wifi
- Parking Ratio 3.0 / 1,000 SF



TOWER
2121
PLAZA

AVAILABILITIES

9TH FLOOR: 11,516 SF

BUILDING D – 2ND FLOOR: 10,228 SF

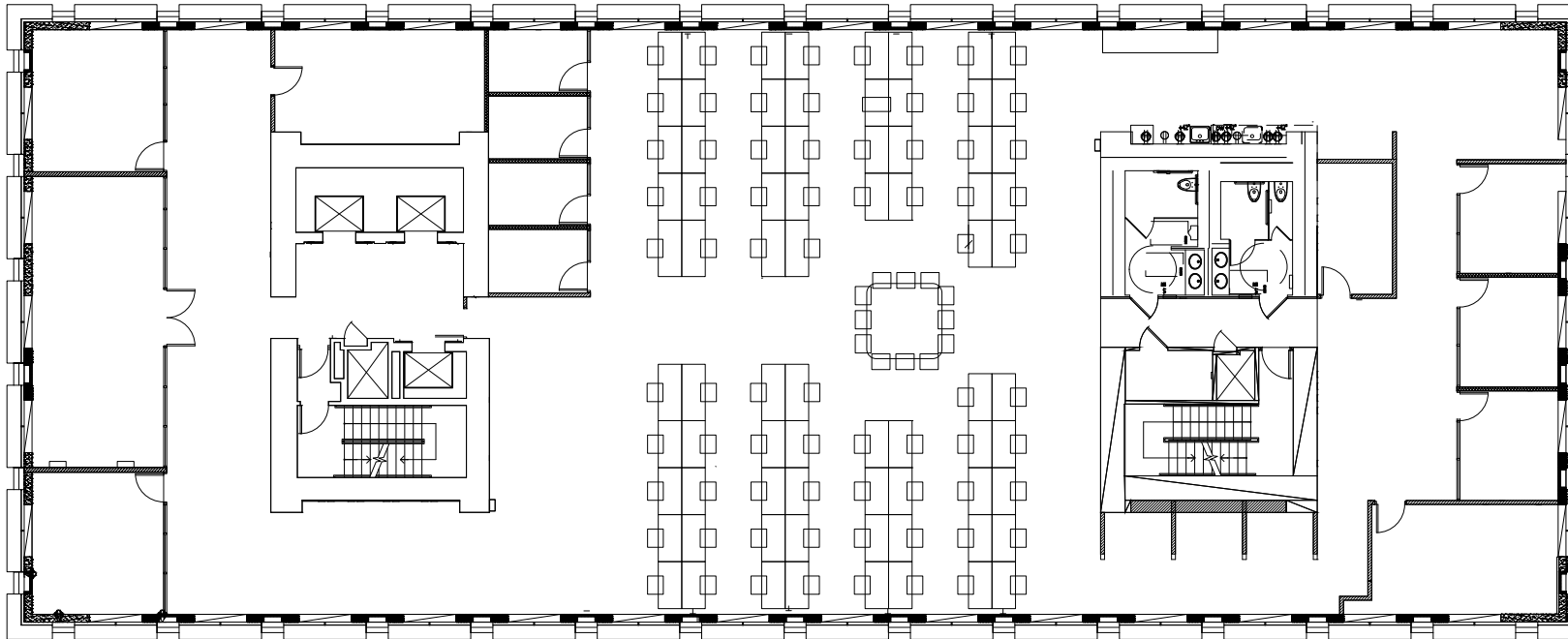
TOWER
2121
PLAZA

TOWER - SUITE 900

11,516 RENTABLE SQUARE FEET AVAILABLE WITH 60 DAYS NOTICE

3 PRIVATE OFFICES | 3 CONFERENCE ROOMS | 2 HUDDLE ROOM | 4 PHONE ROOMS

IT / STORAGE ROOM | BREAK AREA | CREATIVE OPEN OFFICE ENVIRONMENT

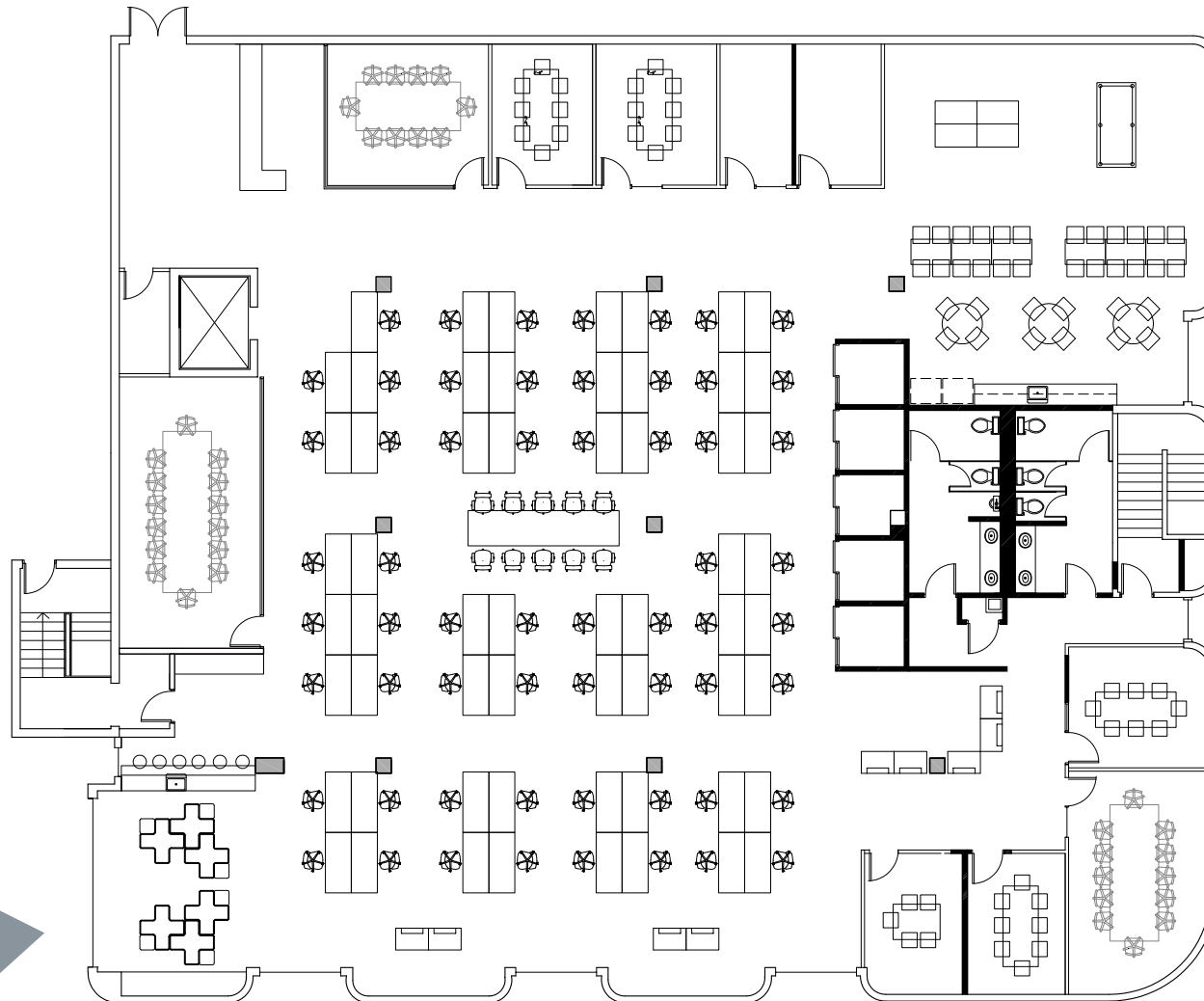


AS - BUILT PLAN

BUILDING D - 2ND FLOOR

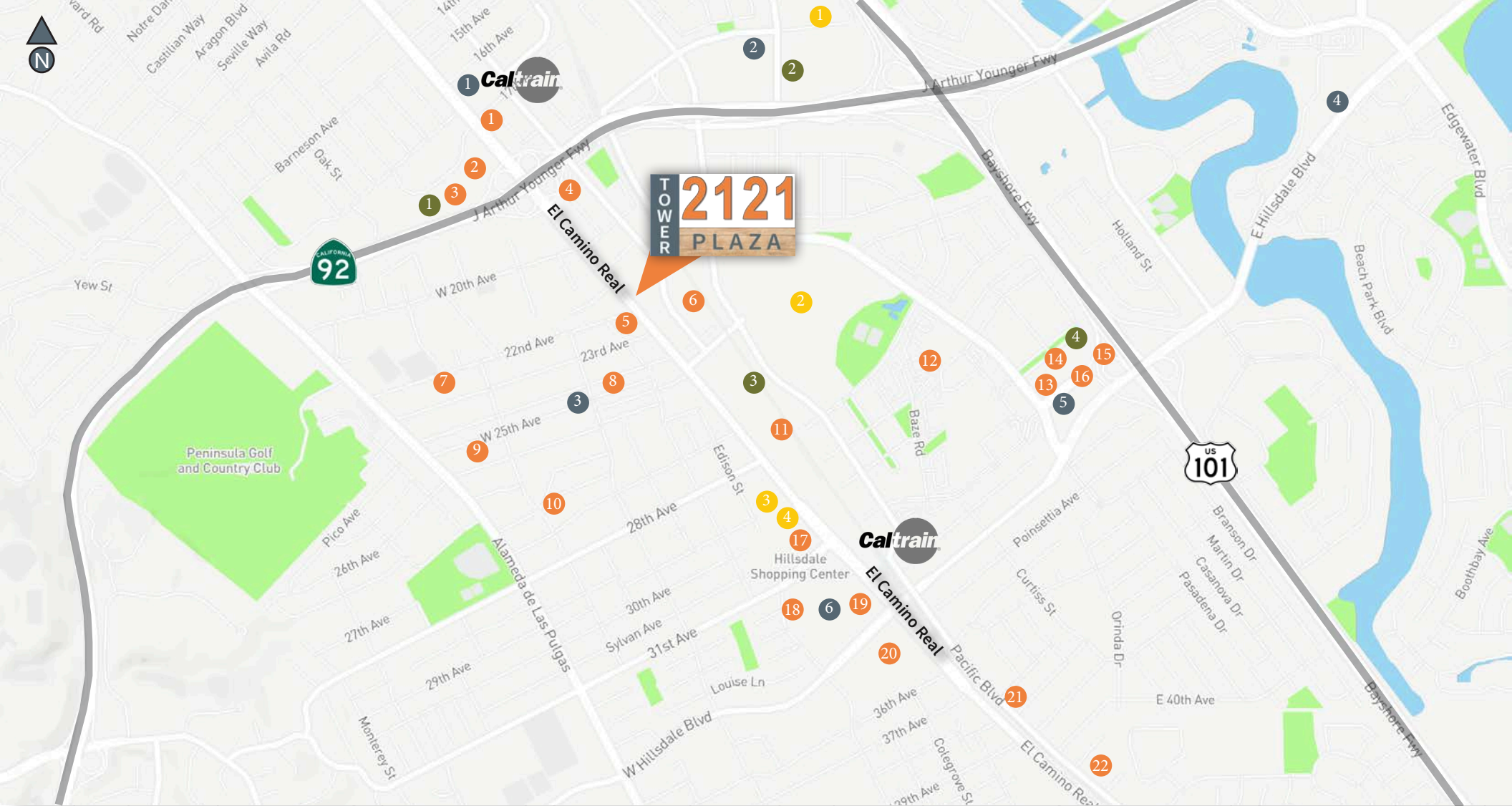
10,228 RENTABLE SQUARE FEET AVAILABLE NOW

3 CONFERENCE ROOMS | HIGH TECH OPEN OFFICE | BREAK AREA | DEDICATED ELEVATOR



HYPOTHETICAL

TOWER **2121** PLAZA



TOWER
2121
PLAZA

RESTAURANTS

- 1 Starbucks
- 2 Jack's Restaurant and Bar
- 3 Windy City Pizza
- 4 Heidi's Pies
- 5 Seniore's Pizza
- 6 La Fonda
- 7 Gateway Restaurants
- 8 Tannourine Restaurant
- 9 Fortune Star
- 10 MaMa's Vietnamese Cuisine
- 11 Ou Tong

- 12 Fieldwork Brewing Co.
- 13 Chipotle Mexican Grill
- 14 The Habit Burger
- 15 Ponzu Poke Bar
- 16 Medocino Farms Sandwich Market
- 17 California Pizza Kitchen
- 18 Paul Martin's
- 19 The Cheesecake Factory
- 20 The Counter San Mateo
- 21 Jack's Prime Burgers & Shakes
- 22 Yumi Yogurt

RETAIL

- 1 Safeway
- 2 Trader Joe's
- 3 25th Avenue Retail
- 4 Bridgepointe Shopping Center
- 5 Whole Foods
- 6 Hillsdale Mall

SERVICES

- 1 Marriott Hotel
- 2 County Event Center
- 3 Bank of America
- 4 Wells Fargo

FITNESS

- 1 24 Hour Fitness
- 2 YMCA
- 3 Fitness 19
- 4 Crunch Gym

AREA AMENITIES

SITE PLAN



- Centrally located between San Francisco and Silicon Valley
- Convenient access anywhere in the Bay Area via US 101, Interstate 280, and Highway 92
- Direct shuttle to Caltrain

San Mateo is home to global leaders in software development, finance, life sciences, web development, and green technologies. The key economic drivers are the proximity of the world's largest venture capital community and leading research institutions like Stanford University, Cal Berkeley, and UC San Francisco. Emerging technology companies coupled with multinational corporations such as Visa, Salesforce, Philips, Gilead Sciences, Franklin Templeton, and Sony Entertainment create a thriving business community in the greater San Mateo area.

CALTRAIN SCHEDULE

Tower Plaza is the first drop off and last pick up location for non-stop SamsTrans shuttle to Hillsdale Caltrain Station and approximately a 10 minute walk to Hayward Park Caltrain station.

am

Northbound Caltrain No.	207	215	323	227
Arrives Hillsdale Station	6:54	7:34	8:24	8:59
Southbound Caltrain No.	208	216	324	228
Arrives Hillsdale Station	6:54	7:35	8:24	8:54

AM SHUTTLE

Departs Hillsdale Station	7:00	7:40	8:30	9:05
Tower Plaza	7:07	7:47	8:37	9:12

pm

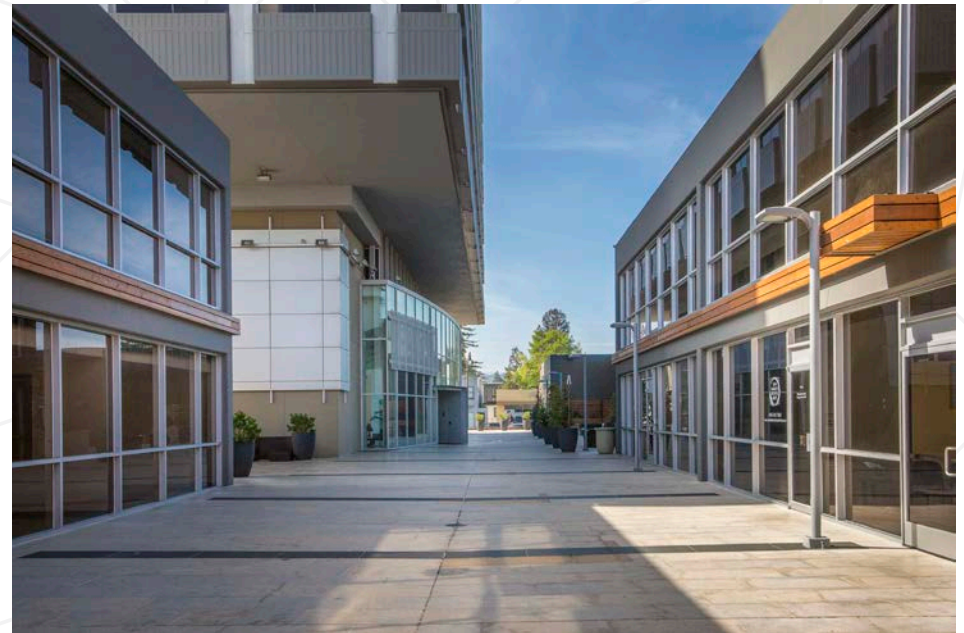
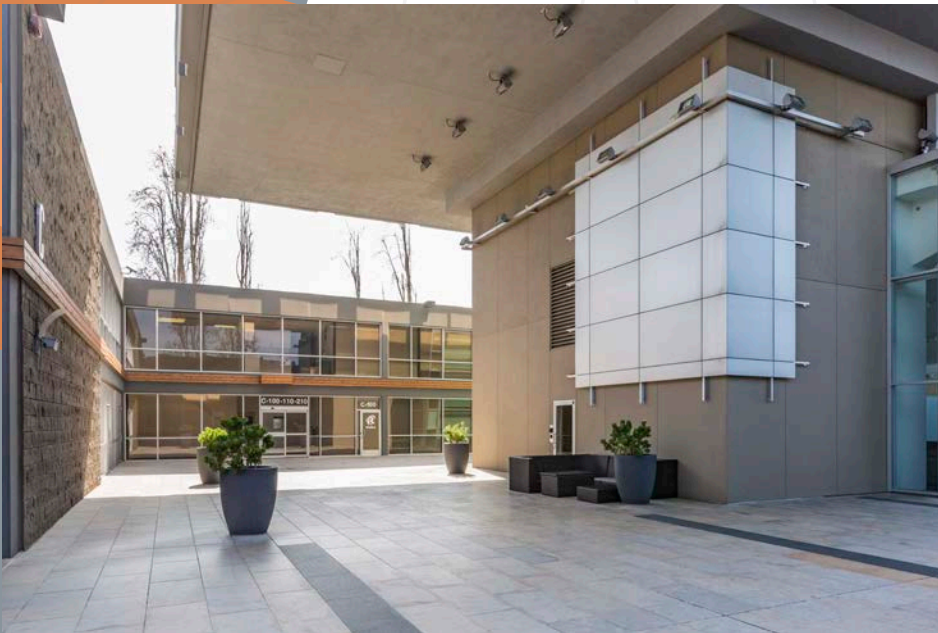
PM SHUTTLE

Tower Plaza	3:26	4:28	5:02	5:52
Arrives Hillsdale Station	3:34	4:36	5:10	6:00

Northbound Caltrain No.	159	263	371	381	283
Departs Hillsdale Station	4:08	4:51	5:18	6:18	6:47
Southbound Caltrain No.	156	262	264	274	380
Departs Hillsdale Station	3:39	4:50	5:15	6:15	6:83



PROJECT PHOTOS



TOWER
2121
PLAZA

TIM GRANT

Direct: 650.480.2124
tim.grant@am.jll.com
CA License #: 00674597

CHELSEY WILLIAMS

Direct: 650.480.2143
chelsey.williams@am.jll.com
CA License #: 02027067

TOSS VALLENTINE

Direct: 650.480.2133
toss.valentine@am.jll.com
CA License #: 01742629

MARK BODIE

Direct: 650.480.2212
mark.bodie@am.jll.com
CA License #: 01941415



Jones Lang LaSalle Brokerage, Inc.
Real Estate License #: 01856260



INVESTCORP