



For Lease

Prime office space for lease

Highlights

- Easy access to Baltimore's Inner Harbor, downtown restaurants and retail establishments
- Convenient to Camden Yards, M&T Bank Stadium and the CBD
- Inner Harbor views
- Secured access
- On-site management and maintenance
- Amenities include: Cusi restaurant, food court, bank, dry cleaner, printing and copying services and Planet Fitness full-service health club

Building information

- Available: 34,711 s.f.
- Rental rate: \$20.50 p.s.f., full service
- Term: 5-10 years
- Occupancy: 30 days
- Parking ratio: Off-site

**100 South Charles Street
Tower 2
Baltimore, MD 21201**

Tony Gross

Senior Vice President

+1 443 931 3333

tony.gross@am.jll.com

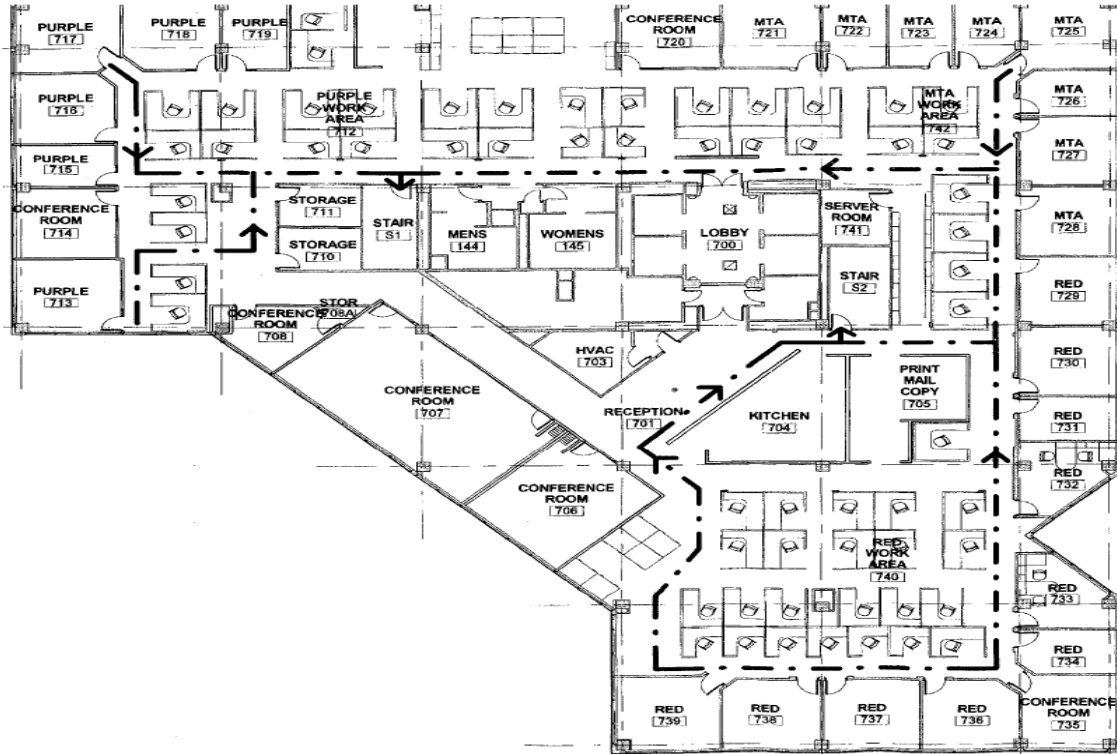
Peter Jackson

Associate

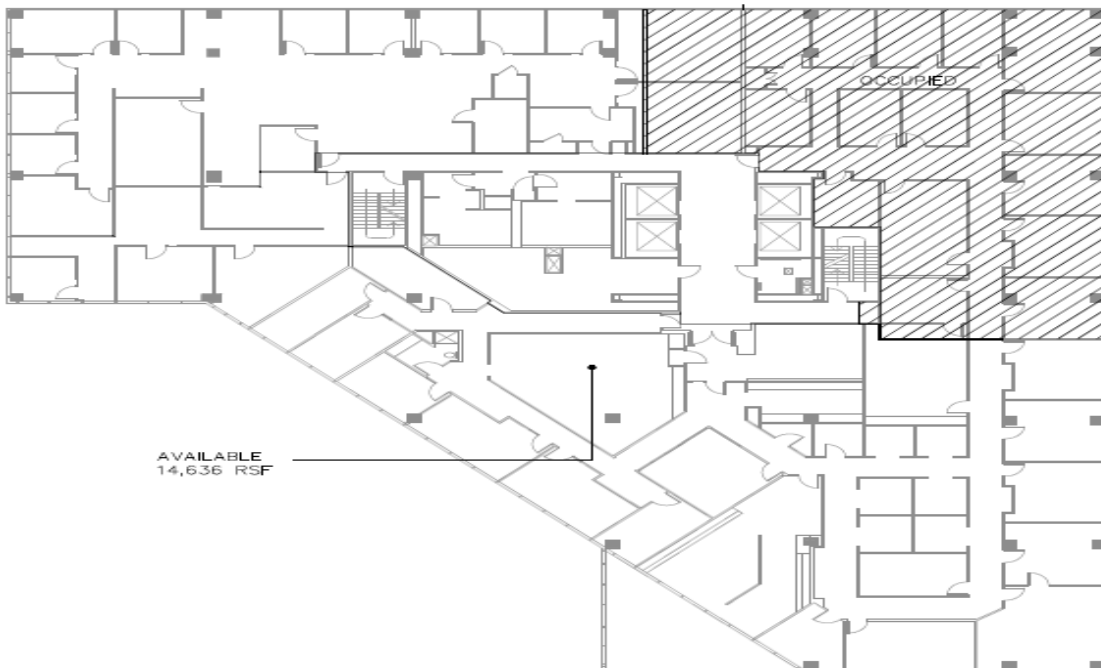
+1 443 931 3329

peterm.jackson@am.jll.com

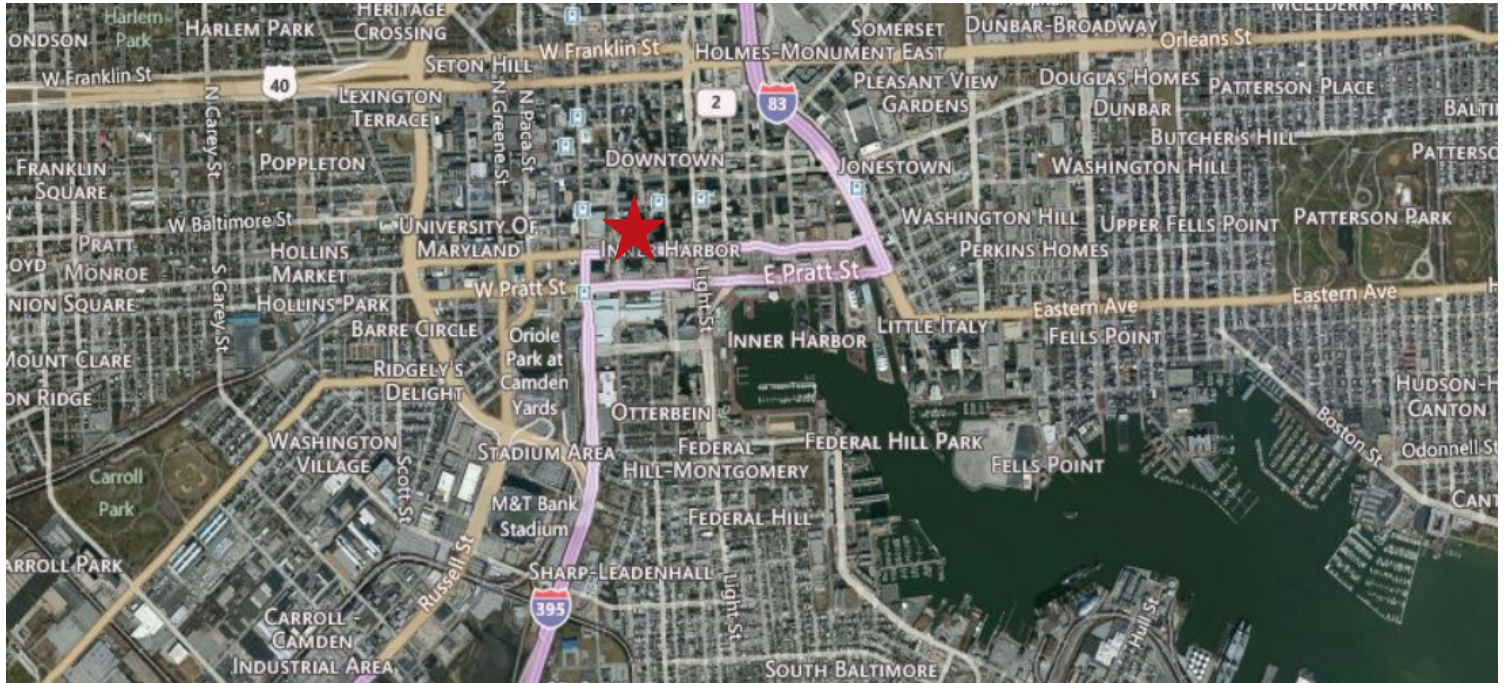
7th floor - 20,075 square feet available



11th floor - 14,536 square feet available



Map



Lobby



Although information has been obtained from sources deemed reliable, Owner, Jones Lang LaSalle, and/or their representatives, brokers or agents make no guarantees as to the accuracy of the information contained herein, and offer the Property without express or implied warranties of any kind. The Property may be withdrawn without notice. If the recipient of this information has signed a confidentiality agreement regarding this matter, this information is subject to the terms of that agreement. ©2017. Jones Lang LaSalle. All rights reserved.