

PARK TOWER AT DALLAS MIDTOWN

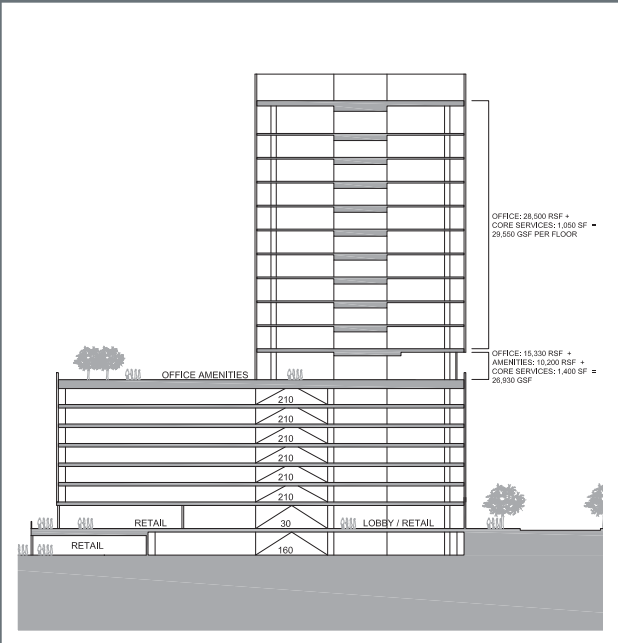


www.dallasmidtown.com

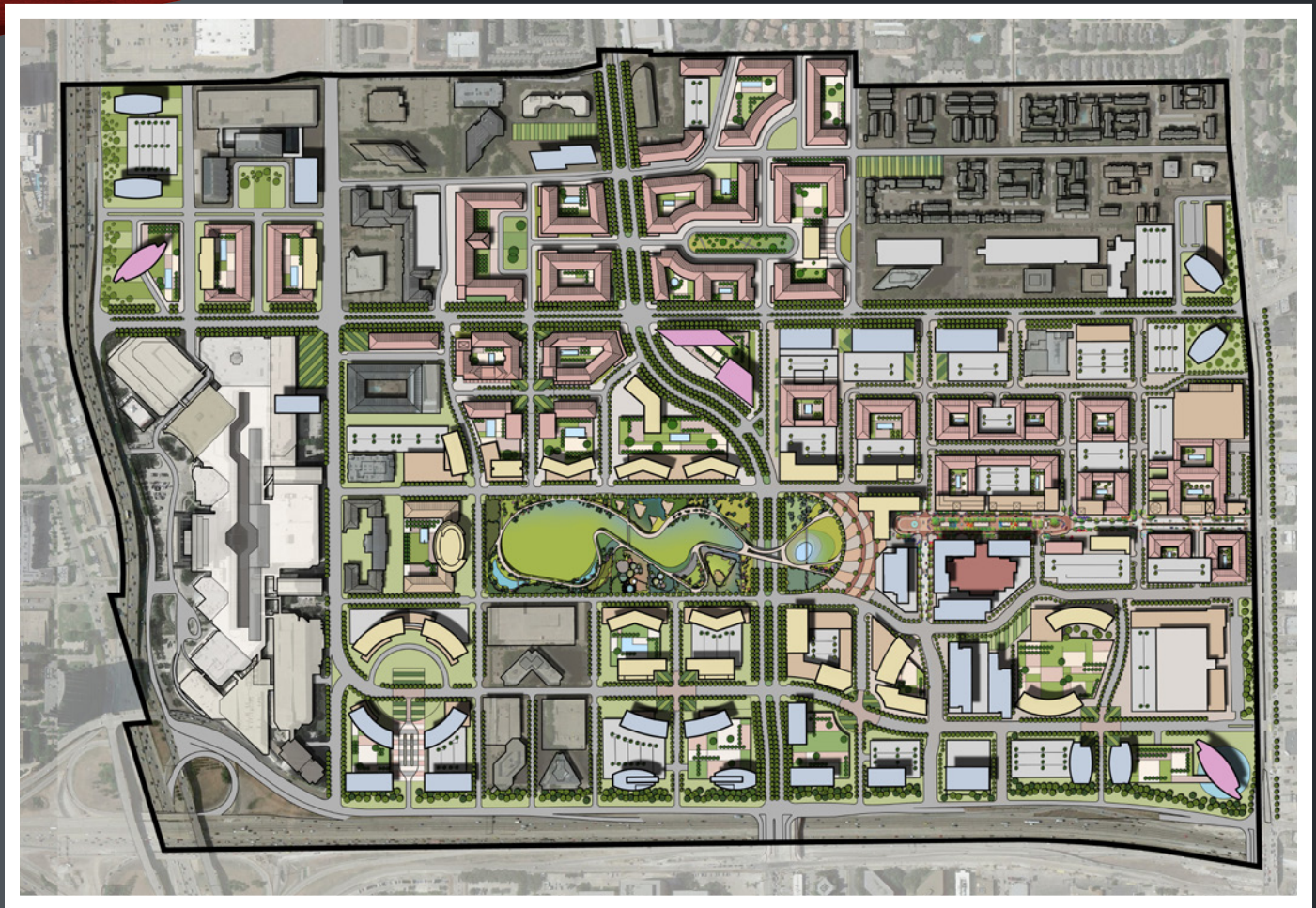
PARK TOWER AT DALLAS MIDTOWN



- 305,230 SF total office
- 45,900 SF total retail
- 63,240 SF atrium deck including:
 - » 15,330 SF office
 - » 10,200 SF amenity program
- 4/1000 SF office parking
- 5/1000 SF retail parking
- Hike and bike trails connecting to White Rock Lake
- Modern trolley system connecting Dallas Midtown to the Galleria
- Parks and open space
- Interactive water features throughout the development
- Two luxury hotels
- Iconic office towers
- Luxury condo units for sale
- Upscale multi-family rental units
- 10-screen luxury theatre
- Boutique shopping
- Restaurants and entertainment venues



MASTER PLAN



UNIQUE DESIGN

"This development will create a city within a city. With restaurants, shopping, housing and office space, Dallas Midtown will completely redefine this part of Dallas," said Linda Koop, Former Dallas City Council Member and Current State Representative.

The innovative development encompasses unique design concepts never before seen in our region, including outdoor shopping, dining and entertainment along a European style central esplanade.

PARK TOWER AT DALLAS MIDTOWN



www.dallasmidtown.com



Daryl Mullin, CCIM
+1 214 438 6388
daryl.mullin@am.jll.com

Ahnie Sheehy
+1 214 438 6376
ahnie.sheehy@am.jll.com

Although information has been obtained from sources deemed reliable, Owner, Jones Lang LaSalle, and/or their representatives, brokers or agents make no guarantees as to the accuracy of the information contained herein, and offer the Property without express or implied warranties of any kind. The Property may be withdrawn without notice. If the recipient of this information has signed a confidentiality agreement regarding this matter, this information is subject to the terms of that agreement. ©2015. Jones Lang LaSalle. All rights reserved.