



180 NORTH LASALLE

ADJACENT TO CTA

LASALLE AND LAKE STREETS

CLASS A OFFICE BUILDING

**CLARK/LAKE CTA
5MM ANNUAL RIDERS**

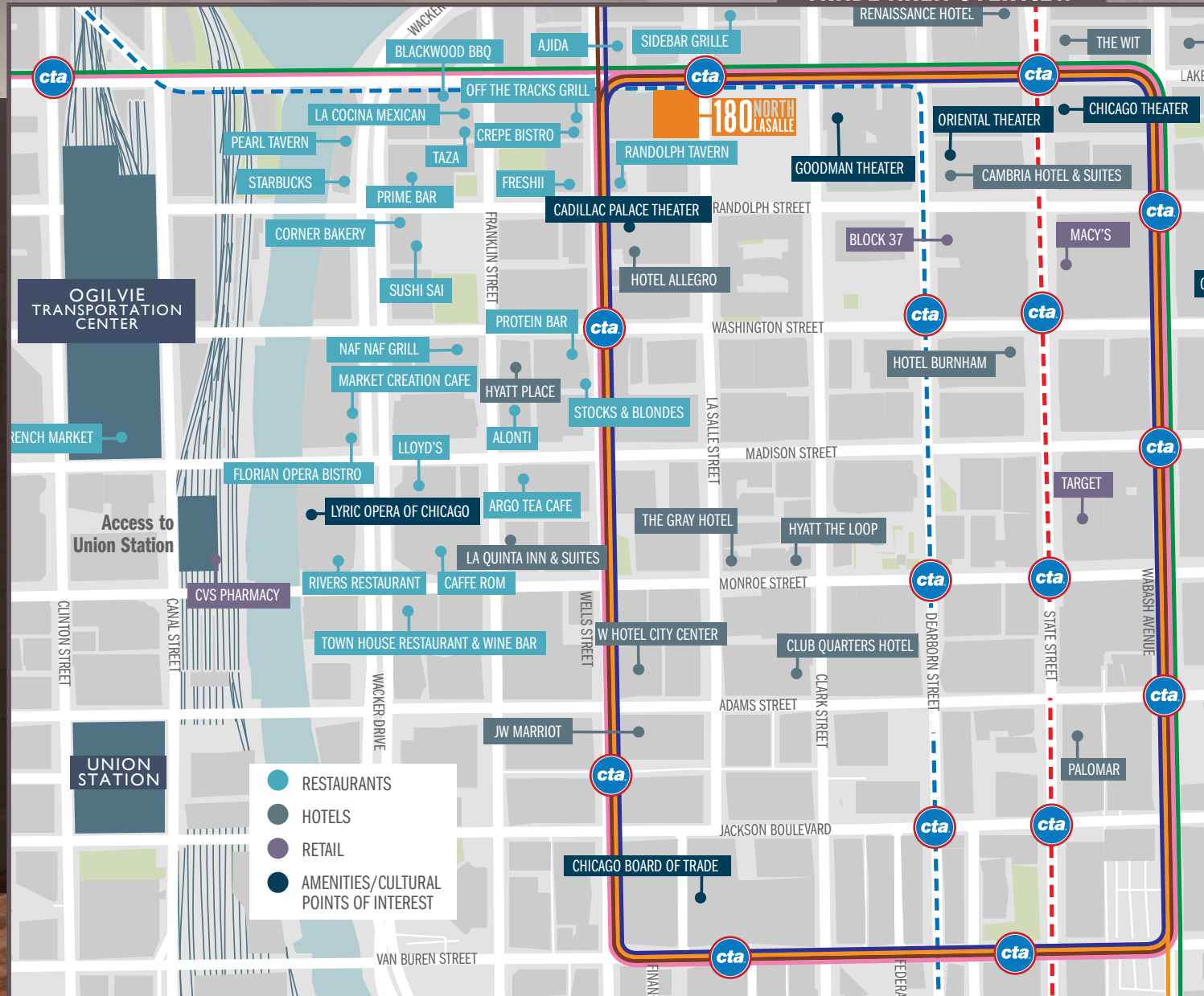
3.7K RESIDENTS

**760,000
SQUARE FEET**

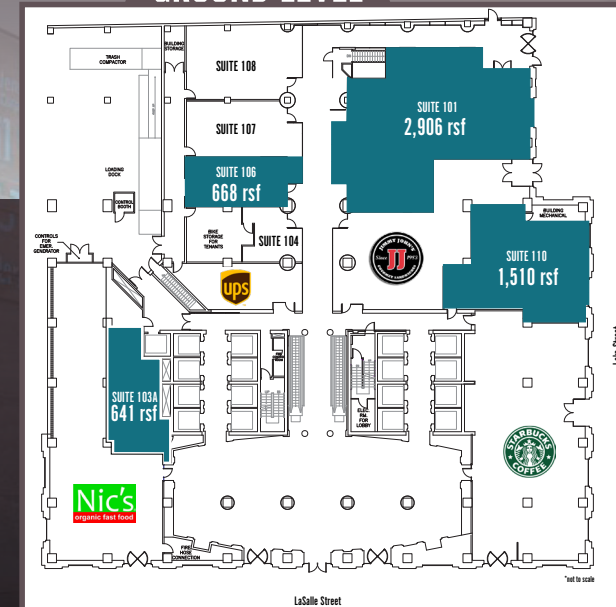
**95%
OCCUPIED**

180 NORTH LASALLE

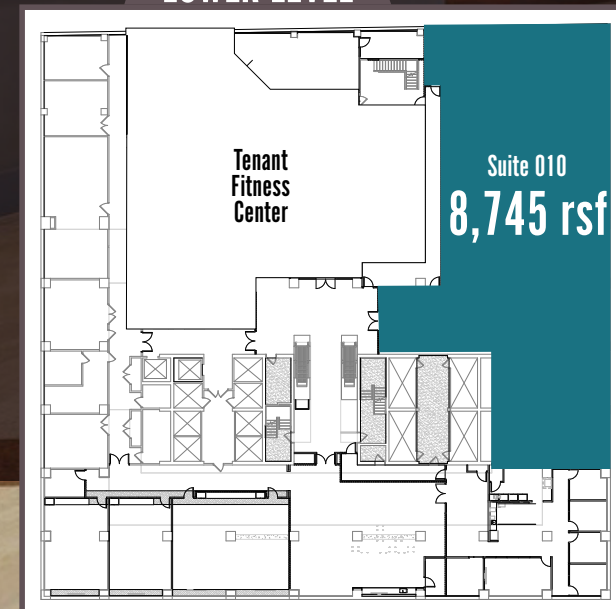
TRADE AREA OVERVIEW



GROUND LEVEL



LOWER LEVEL



ADJACENT TO THE CTA

- Clark/Lake Station, the most traveled stop in the loop, with riders/year exceeding 5 million passengers

+7.3M SF OF OFFICE SPACE

- 42,000 daytime employees within one block

CLASS - A

- 95% occupied, 780,000 SF, Class-A office building
- Located on Chicago's historic Financial District

STRONG PEDESTRIAN COUNTS

- The site's position in Chicago's CBD and its proximity to City Hall and the Thompson Center contribute high volumes of foot traffic to the immediate area

+3.7K RESIDENTS

- Within a quarter-mile radius of 180 N LaSalle

180 NORTH LASALLE

180

JARREN ERIC WOLFSON PEOPLE
MESTIC TUNAY KILLED FORMER D
KING NANCY AV DANA VICTIM
PROTECT
MOOD THE DAY
#Wear Orange
PHOTO MEDIC
UNITE BLUE EVER GUNSENSE TO
SAFETY PHOTO MEDIC
BIPARTISANISM

PETER CARUSO
Senior Vice President
+1 312 228 2926
peter.caruso@am.jll.com

180 NORTH LASALLE

JOAQUIN MANRIQUEZ
Associate
1 312 228 3094
joaquin.manriquez@am.jll.com