

For Lease

701 9th Street NW Washington, DC



1,200 s.f.

20 ft. frontage



9th Street NW

INCREDIBLE RETAIL OPPORTUNITY IN THE HEART OF EAST END

Highlights

- 1,200 s.f. with great existing conditions (previous Starbucks)
- Additional entrance through building lobby
- Exterior signage and outdoor seating on 9th St NW
- Located one block from Capital One Arena
- Within one block of Gallery Place Chinatown Metro Station (22,427 RPD)
- Incredible density of office (9.4M s.f.), residential (1,212M s.f.), and hotels (2,518 rooms/360 rooms in pipeline) in the surrounding trade area within .25 miles

Nearby retail

CAVA

La Tasca
spanish tapas bar & restaurant

URBAN OUTFITTERS

FIVE GUYS®
BURGERS and FRIES

National
Portrait
Gallery

CHOPT
Creative Salad Company

Clyde's

Bar Louie

Capital One
Arena

Demographics

(Radius of .25 mile, .5 mile, and 1 mile)

Population

2,601	14,439	47,160
-------	--------	--------

Average HH Income

\$195,636	\$136,280	\$127,604
-----------	-----------	-----------

Households

1,738	8,810	26,423
-------	-------	--------

Employees

38,071	126,450	359,616
--------	---------	---------

Median Age

40.0	34.2	34.2
------	------	------

The Area



VEHICLES
PER DAY

9th Street
14,900

7th Street
13,200

6th Street
18,300

H Street
22,448



RIDERS
PER DAY

Gallery Place
22,427

Metro Center
24,532



Contact us

Andy Corno

O: +1 202 719 6137

M: +1 301 520 2620

andy.corno@am.jll.com

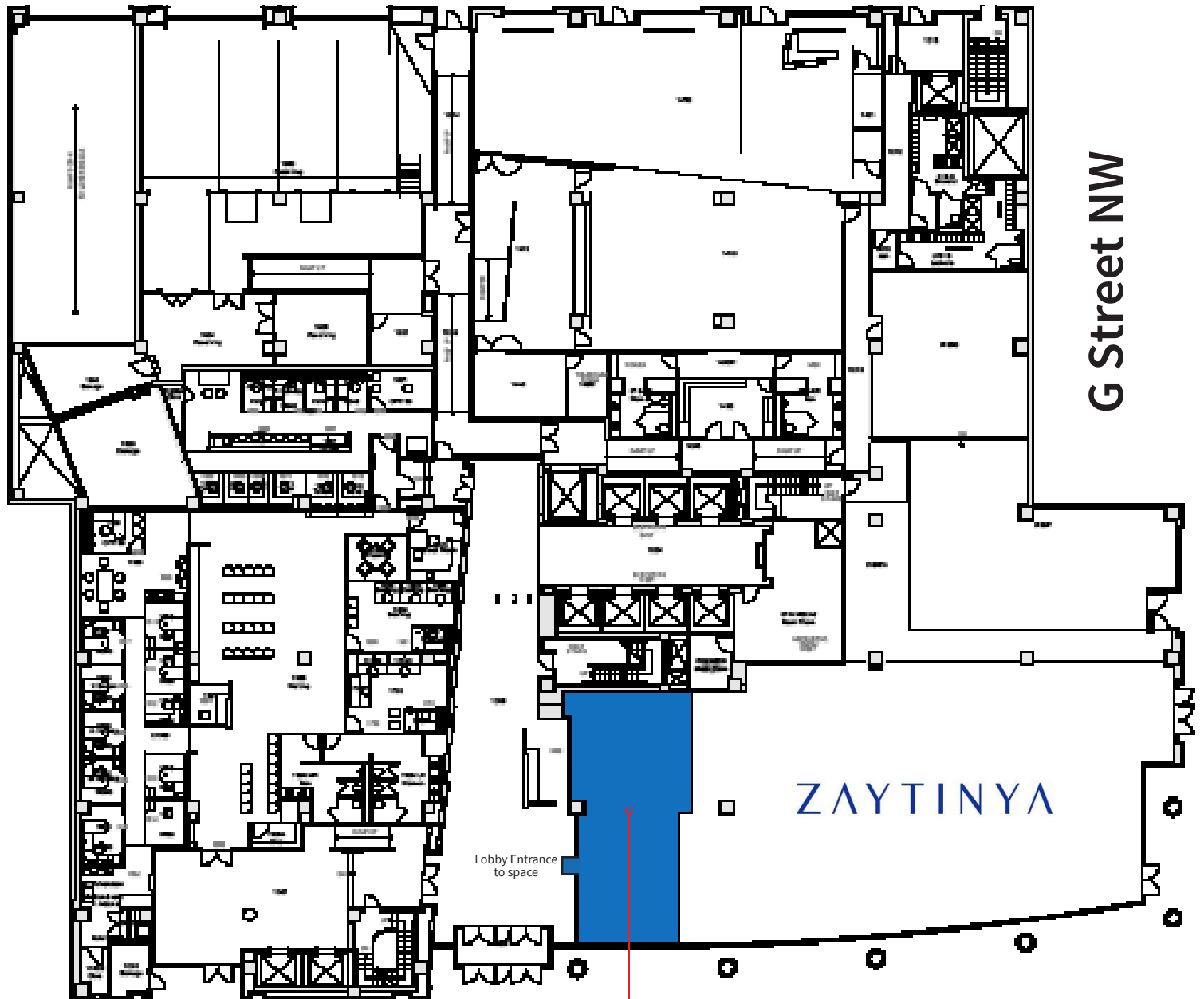
Thomas Jackman

O: +1 202 719 5624

M: +1 301 580 1512

thomas.jackman@am.jll.com

The Space



9th Street NW

G Street NW

1,200 s.f.
Available Space



701 9th Street NW
Washington, DC



JLL

*Achieve
Ambitions*

Contact us

Andy Corno

O: +1 202 719 6137
M: +1 301 520 2620
andy.corno@am.jll.com

Thomas Jackman

O: +1 202 719 5624
M: +1 301 580 1512
thomas.jackman@am.jll.com



701 9th Street NW
Washington, DC