

One month's  
**free rent**  
for every year  
of term

## BRANCH EXECUTIVE QUARTER

# For Lease

### Office space in desirable two-building park

- Two buildings comprising 40,000 s.f. in great location
- Suites ranging from 1,689 r.s.f. to 3,955 r.s.f. available
- Monument signage for all tenants; building signage available
- Generous parking ratio of 5.0 spaces per 1,000 s.f.
- Located at the heart of affluent, fast-growing Western Branch
- Walking distance from Chesapeake Square Mall amenities
- New Bon Secours medical plaza is around the corner
- Excellent local access via Taylor Road and Portsmouth Boulevard
- Five minutes from Interstate 664

4012-4016 Raintree Road  
Chesapeake, VA 23321

Landon Hinton  
+1 757 961 3158  
[landon.hinton@am.jll.com](mailto:landon.hinton@am.jll.com)

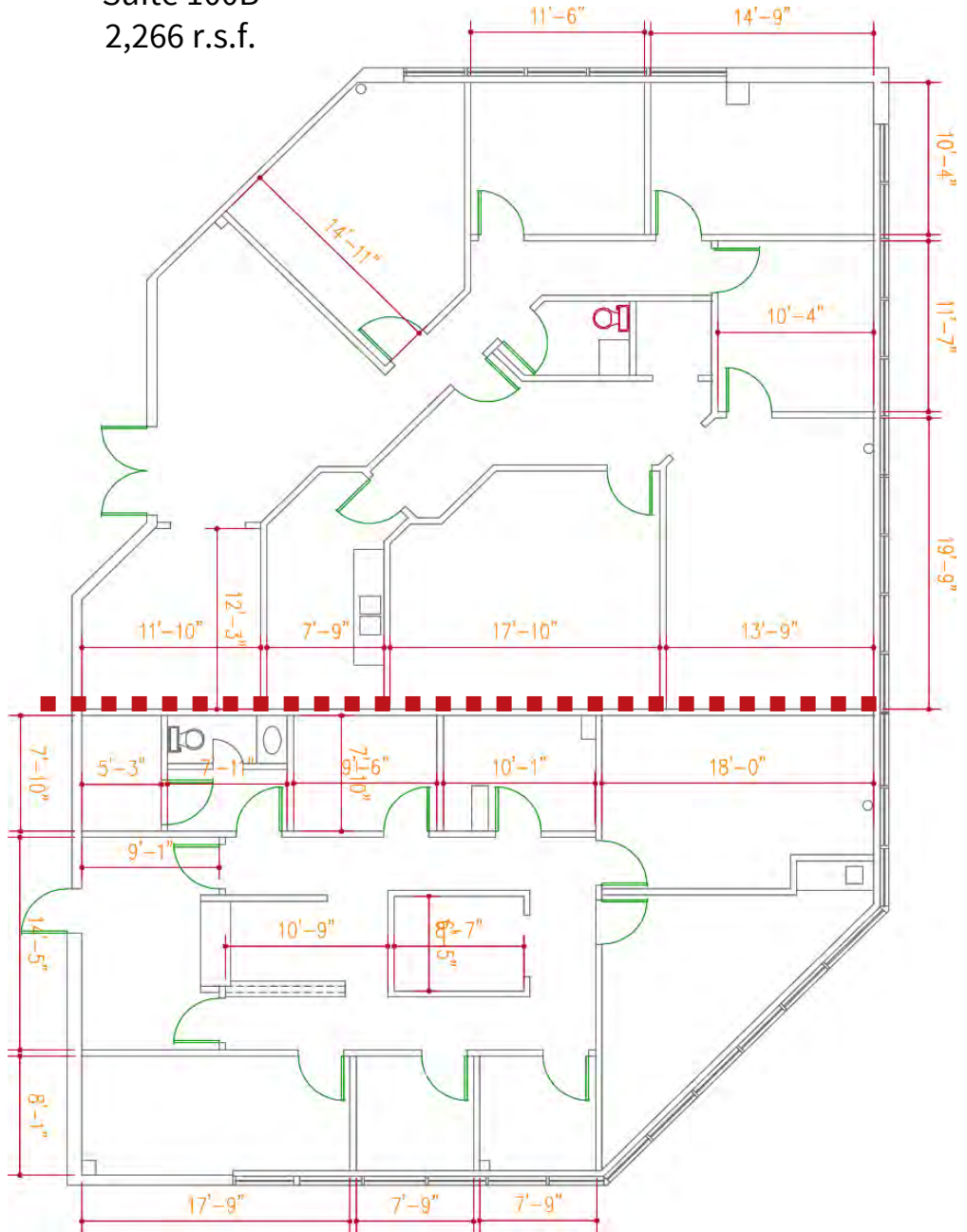
[jll.com/hampton-roads](http://jll.com/hampton-roads)



Availabilities – 4012 Raintree Road

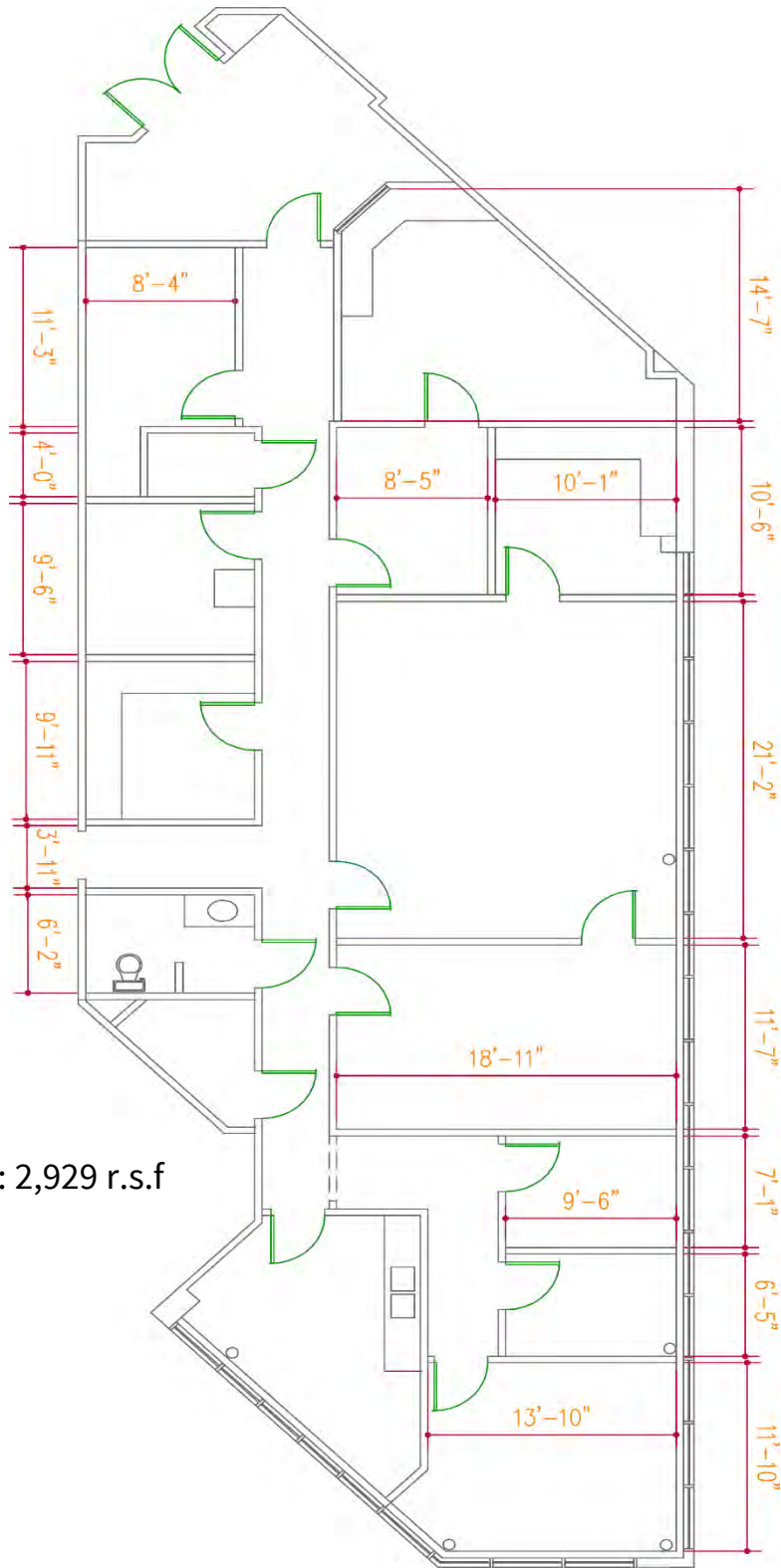
Suite 100B  
2,266 r.s.f.

Suite 100A  
1,689 r.s.f.



Suite 100A-100B combined: 3,955 r.s.f.

Availabilities – 4016 Raintree Road



Suite 240: 2,929 r.s.f



# Aerial

