

# STAR METALS

1055 HOWELL MILL ROAD

---

Star Metals is designed to cater to the millennial, other professionals and progressive companies seeking an authentic workplace to recruit and retain Atlanta's most talented, tech-savvy workforce. Its central location in West Midtown's trendy neighborhood affords residents and tenants the accessibility to enjoy modern living and work spaces while being just footsteps away from the epicenter of Atlanta's booming restaurant scene, high-end shops and everyday conveniences.



## BUILDING HIGHLIGHTS

- 12-story, Class A Office featuring more than 185,000 sf of office space and 30,000 sf of ground floor retail
- Varying size floor plates range from 18,000 sf to 32,000 sf
- Large, landscaped outdoor terraces
- Building amenity spaces with panoramic views of Buckhead, Midtown and Downtown
- Above market parking ratio at 3.5 spaces/1,000 sf
- Walk Score: 81 – Very Walkable



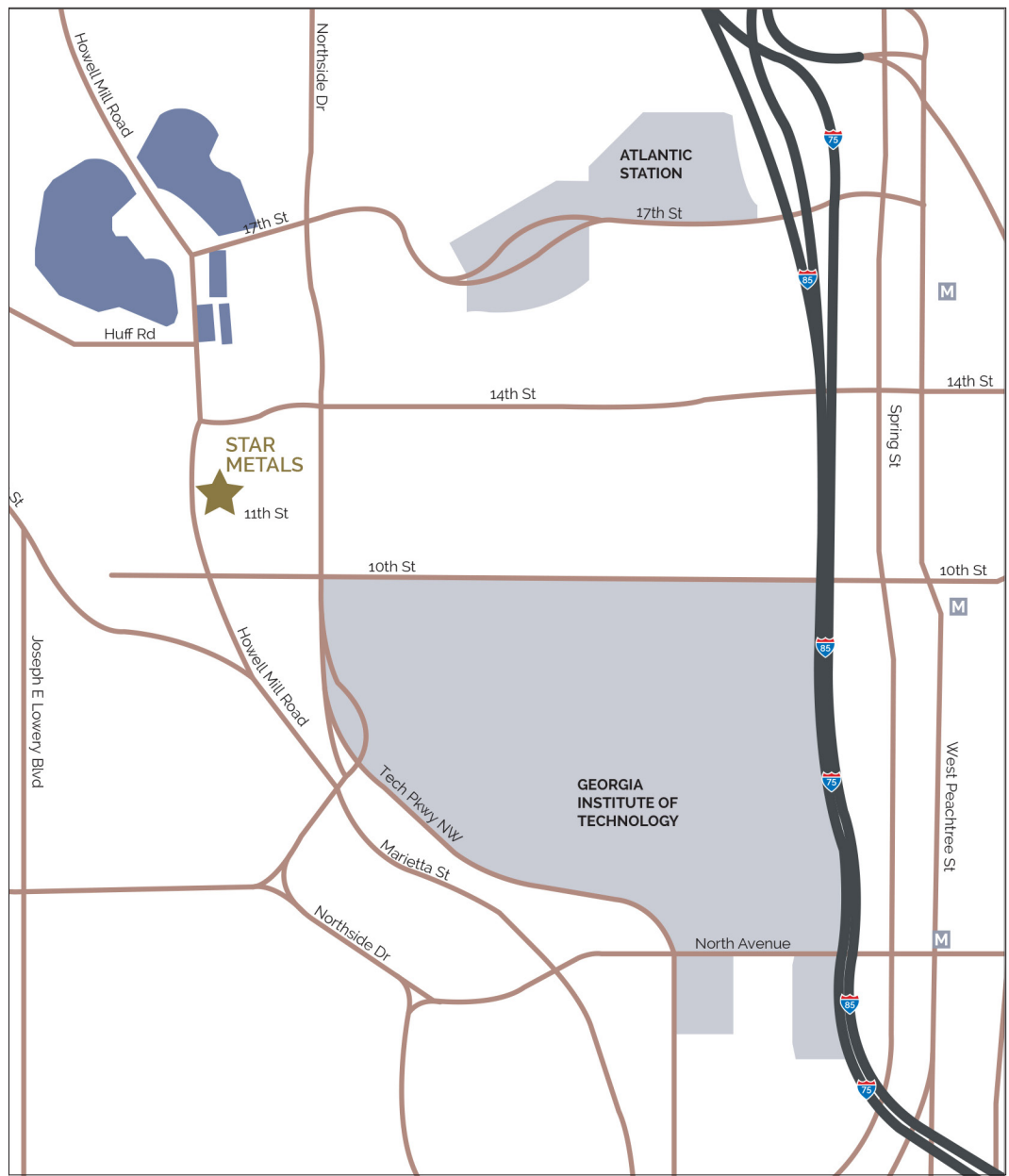
TRENDY



TECH SAVVY



PROGRESSIVE



# STAR METALS

## 185,000 SF

### OF CONTIGUOUS SPACE



FOR LEASING INFORMATION, CONTACT:



Jeff Bellamy  
404 995 2221  
jeff.bellamy@am.jll.com

Brooke Dewey  
404 995 2138  
brooke.dewey@am.jll.com

Liz Koteles  
404 995 6531  
liz.koteles@am.jll.com