



For Sale

2.29 acres available in Citrus County

- Great option for mixed use opportunity with high visibility
- Zoned PDR-OF1
- Top Retailers in the area: Winn Dixie, Dollar Tree, O'Reilly's, Bank of America, SunTrust and CVS
- The property is within 5 miles of four golf courses
- Top Employers for the area include: Citrus Memorial Hospital, Citrus County Board of Commissioners and Duke Energy

Beverly Hills Land

3401 N Lecanto Hwy
Beverly Hills, FL 34465

Paul Rutledge
+1 813 261 6716
paul.rutledge@am.jll.com

Natalie Puccini
+1 813 387 1294
natalie.puccini@am.jll.com

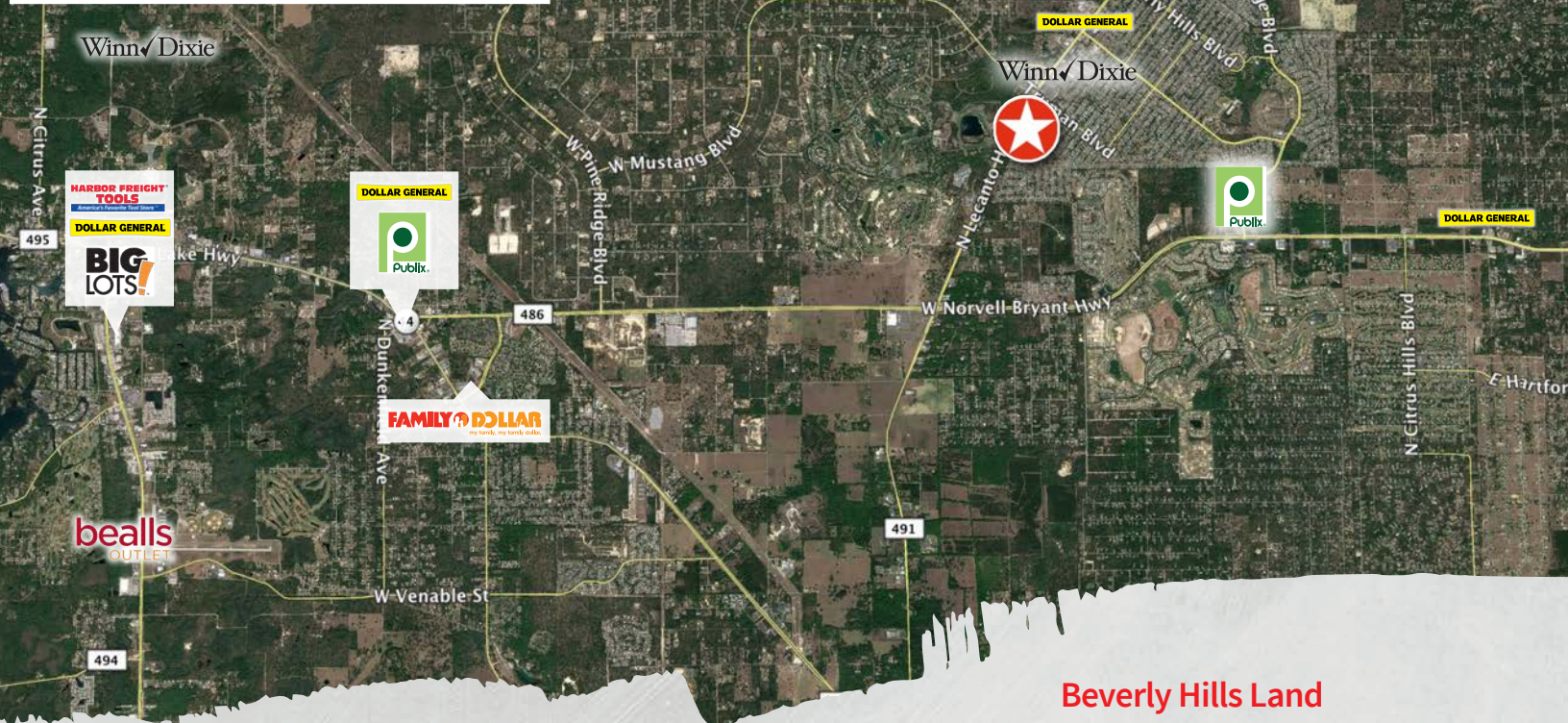
Brooke Williams
+1 813 261 6717
brooke.williams@am.jll.com

jllretail.com

DISCLAIMER

© 2019 Jones Lang LaSalle Brokerage, Inc. All rights reserved. All information contained herein is from sources deemed reliable; however, no representation or warranty is made to the accuracy thereof.





Beverly Hills Land

3401 N Lecanto Hwy
Beverly Hills, FL 34465

Paul Rutledge
+1 813 261 6716
paul.rutledge@am.jll.com

Natalie Puccini
+1 813 387 1294
natalie.puccini@am.jll.com

Brooke Williams
+1 813 261 6717
brooke.williams@am.jll.com

jllretail.com

3 mile demographics

 <p>16,886 Est. population</p>	 <p>\$70,515 Average HH Income</p>
 <p>62.2 Median age</p>	 <p>5,800 Daily Auto Traffic Count</p>

DISCLAIMER
© 2019 Jones Lang LaSalle Brokerage, Inc. All rights reserved. All information contained herein is from sources deemed reliable; however, no representation or warranty is made to the accuracy thereof.

