



For Lease

Class A Office Space for Lease

- Two Class A office buildings totalling 86,189 square feet.
- Recently renovated common areas including granite finishes in the lobby and updated restrooms.
- Abundant free surface parking.

Availability at 6315 Hillside Court:

- Suite G - 3,616 s.f.
- Suite H - 3,116 s.f.
- Suites G & H can be combined to be 6,732 s.f. contiguous.

6310 and 6315 Hillside Court Columbia, MD 21045

Gary Applestein

Senior Vice President

+1 443 931 3345

gary.applestein@am.jll.com

Rob Freedman

Senior Vice President

+1 443 931 3346

rob.freedma@am.jll.com

Colin Penoyar

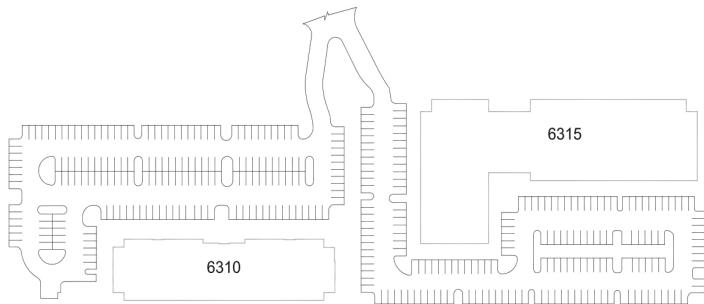
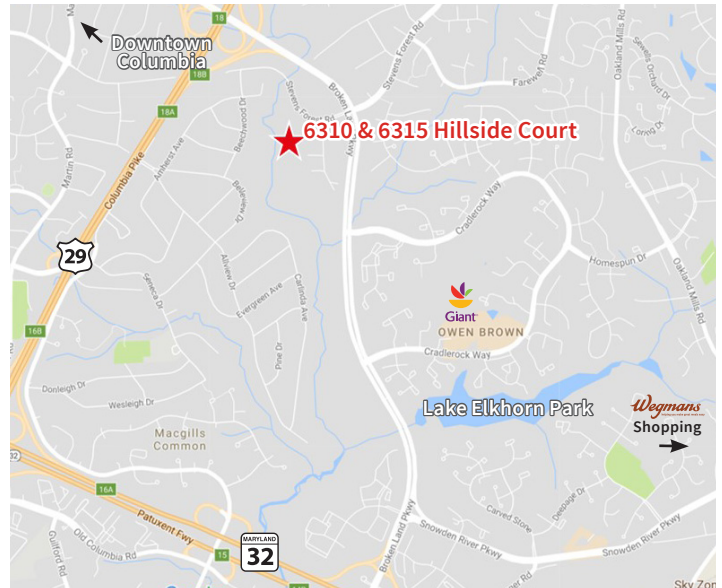
Vice President

+1 443 931 3349

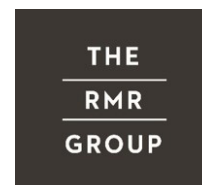
colin.penoyar@am.jll.com

Location Highlights

- Adjacent to Route 29 providing easy access to I-95, I-70, Route 32 and Route 100.
- Close proximity to Downtown Columbia, shopping, restaurants and entertainment.
- Howard County Silver route bus stop is within walking distance.
- 12 miles to BWI Airport.
- 13 miles to Fort Meade.



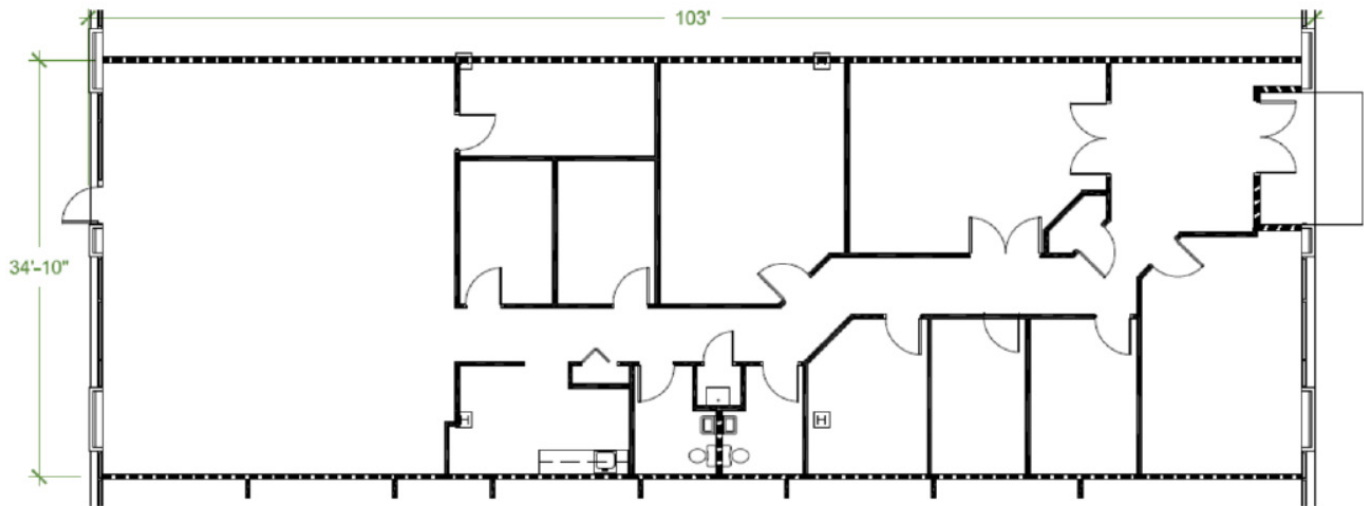
6315 Hillside Court



Availability

6315 Hillside Court - Suite G

BUILDING KEY PLAN
= FIELD MEASURED



6315 Hillside Court - Suite H

