

HARDY INDUSTRIAL CENTER

FM 1960 @ HARDY TOLL ROAD | HOUSTON, TX

Owned and developed by:



±10,125 SF CRANE-READY BUILDING — FOR LEASE OR SALE

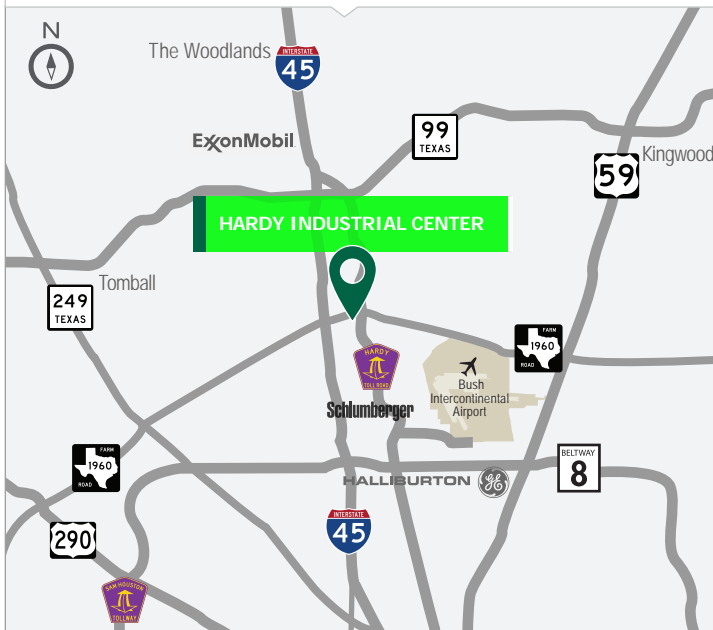


ARCHITECTURAL RENDERING

- Hardy Industrial Center is a deed-restricted business park strategically located between The Woodlands and Bush Intercontinental Airport.
- Location allows for access to both I-45 and the Hardy Toll Road via FM 1960 and Bammel Road.
- Opportunities for build-to-suit and design-build projects.

FEATURES

- ±10,125 SF crane-ready building
- Office: Build-to-suit
- 10-ton crane capacity with ±20' hook height
- 26' eave height
- 75' bay on 25' centers (75' x 135')
- Power: 400 amps, 480V, 3-phase
- Overhead doors: Two (2) at (14' x 16')
- Regional detention provided
- Utilities in place
- Under construction - 3 Q 2018 delivery
- Additional land available for expansion or build-to-suit
- Lease rate: Please contact broker
- Sales price: Please contact broker



CONTACT

Richard Quarles, CCIM
Senior Vice President
+1.713.888.4019
richard.quarles@am.jll.com

Mark Nicholas, SIOR
Executive Vice President
+1 713.888.4024
mark.nicholas@am.jll.com

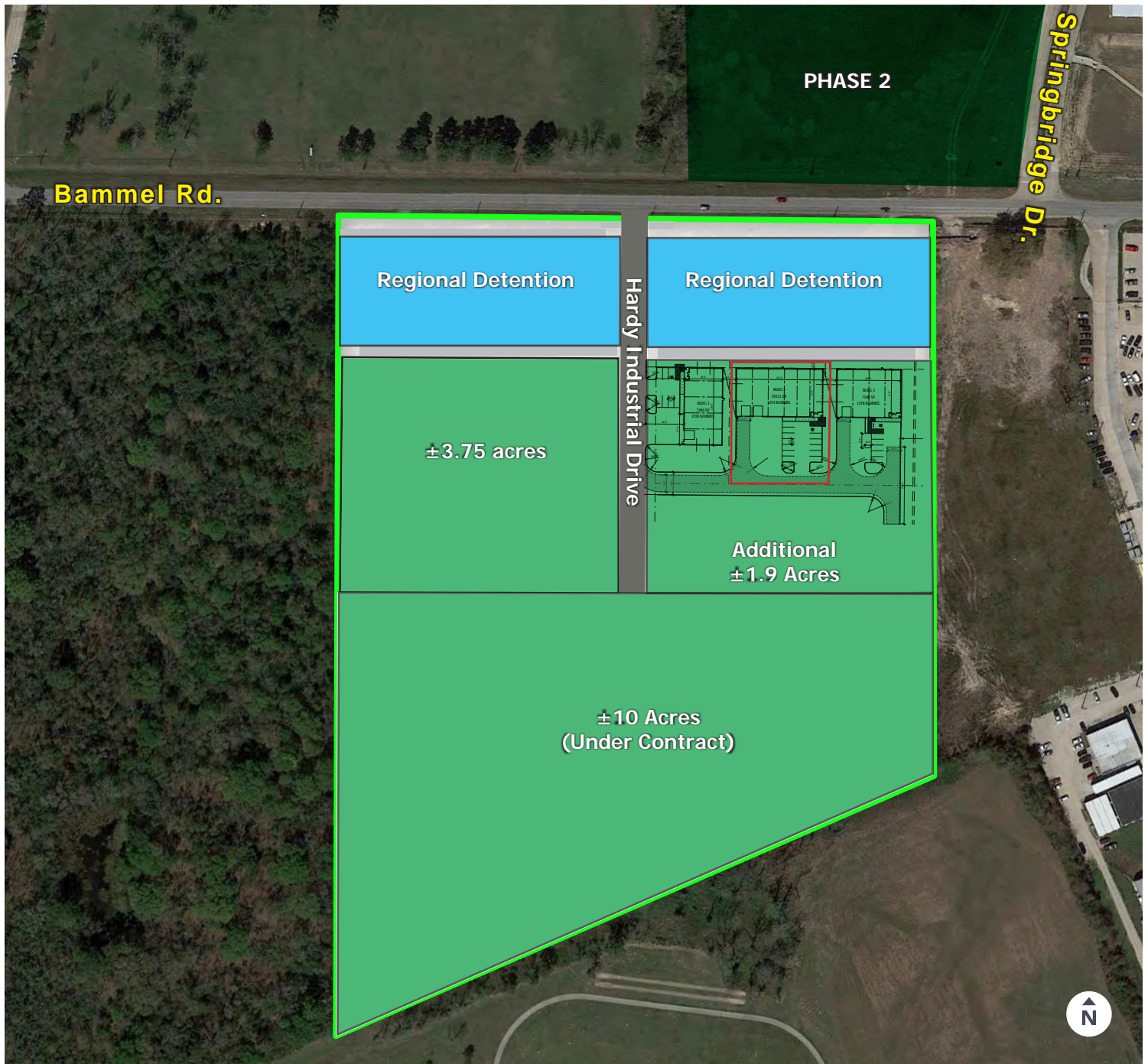
Disclaimer: The information contained herein is obtained from sources believed to be reliable. However, both Jones Lang LaSalle and Vigavi Realty LLC make no guarantees, warranties or representations as to the completeness or accuracy thereof. The presentation of this property is submitted subject to errors, omissions, change of price or conditions, and is subject to prior sale, lease or withdrawal without notice. ©2017. Jones Lang LaSalle. All rights reserved.



HARDY INDUSTRIAL CENTER

FM 1960 @ HARDY TOLL ROAD | HOUSTON, TX

Owned and developed by:



- Site plan above is for guidance/context
- Developer is flexible on land size and configuration
- Multiple alternatives for transaction structure (Build-to-Suit, Design Build and Sale)

CONTACT

Richard Quarles, CCIM
Senior Vice President
+1.713.888.4019
richard.quarles@am.jll.com

Mark Nicholas, SIOR
Executive Vice President
+1 713.888.4024
mark.nicholas@am.jll.com

Disclaimer: The information contained herein is obtained from sources believed to be reliable. However, both Jones Lang LaSalle and Vigavi Realty LLC make no guarantees, warranties or representations as to the completeness or accuracy thereof. The presentation of this property is submitted subject to errors, omissions, change of price or conditions, and is subject to prior sale, lease or withdrawal without notice. ©2017. Jones Lang LaSalle. All rights reserved.



HARDY INDUSTRIAL CENTER

FM 1960 @ HARDY TOLL ROAD | HOUSTON, TX

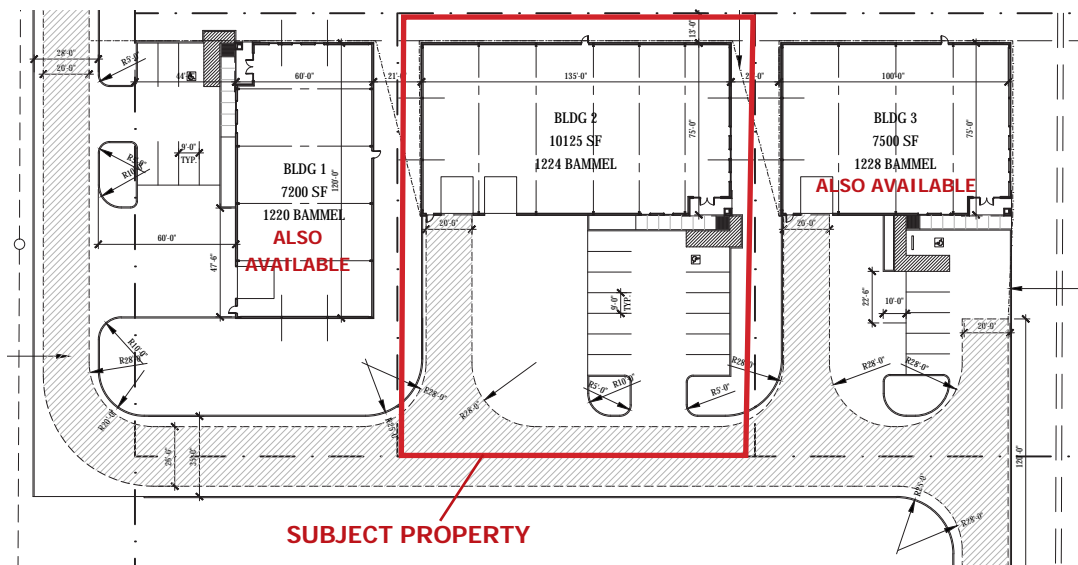
Owned and developed by:



±10,125 SF CRANE-READY BUILDING — FOR LEASE OR SALE



SITE PLAN



CONTACT

Richard Quarles, CCIM
Senior Vice President
+1.713.888.4019
richard.quarles@am.jll.com

Mark Nicholas, SIOR
Executive Vice President
+1 713.888.4024
mark.nicholas@am.jll.com

Disclaimer: The information contained herein is obtained from sources believed to be reliable. However, both Jones Lang LaSalle and Vigavi Realty LLC make no guarantees, warranties or representations as to the completeness or accuracy thereof. The presentation of this property is submitted subject to errors, omissions, change of price or conditions, and is subject to prior sale, lease or withdrawal without notice. ©2017. Jones Lang LaSalle. All rights reserved.

