

# For Lease



8,529 s.f. available | Suite 100  
19th Avenue Corporate Center

- 57,731 s.f. office, medical and flex building
- Digital monument sign on 19th Avenue
- Frontage on 19th Avenue
- Bus stop located at site
- No load factor
- Close proximity to retail, restaurants and hotels
- Excellent access to Loop 101 and I-17 freeways

20601 N. 19th Avenue  
Phoenix, AZ

**Steve Sayre**  
Executive Vice President  
+1 602 282 6299  
[steve.sayre@am.jll.com](mailto:steve.sayre@am.jll.com)

JLL Phoenix

3131 E. Camelback Road, Suite 400  
Phoenix, Arizona 85016

[jll.com/phoenix](http://jll.com/phoenix)  
🐦 [phoenixblog.jll.com](https://twitter.com/phoenixblog.jll.com)  
📱 [@jllphoenix](https://www.instagram.com/jllphoenix)

**DISCLAIMER**

©2017 Jones Lang LaSalle IP, Inc. All rights reserved. All information contained herein is from sources deemed reliable; however, no representation or warranty is made to the accuracy thereof.

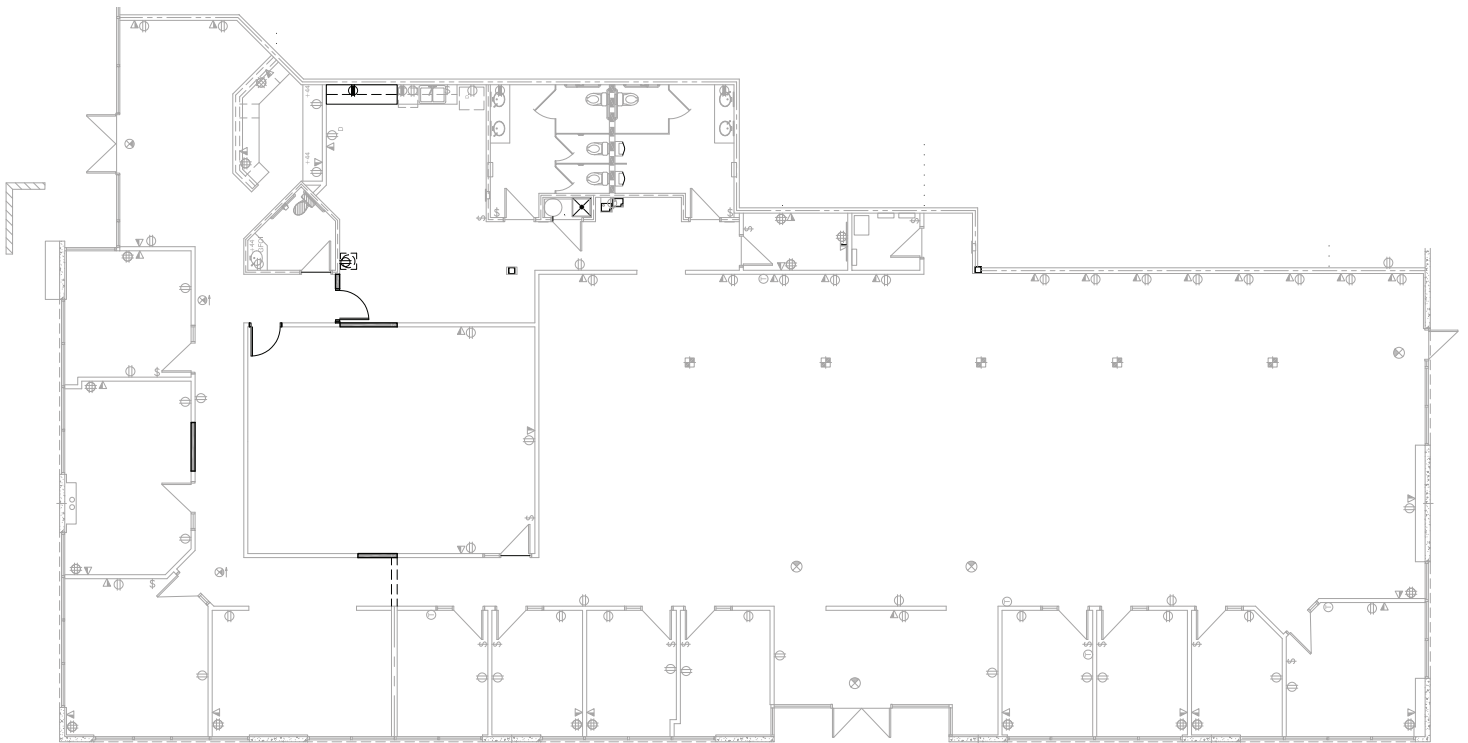


## Suite 100 highlights

- 8,529 s.f. available
- End cap suite
- 100% office
- Potential grade level door
- 7:1000 parking ratio
- 5 covered parking spaces reserved
- Fiber through Cox
- DSL through CenturyLink



## Suite 100 floor plan



For more information, please contact:

**Steve Sayre**  
Executive Vice President  
+1 602 282 6299  
[steve.sayre@am.jll.com](mailto:steve.sayre@am.jll.com)

