

# HOTEL SITE AVAILABLE

3610 Priority Way South Drive  
Indianapolis, IN 46240

- Size: 6.06 total acres, 3.961 usable acres
- Premium interstate visibility
- Zoned: C-S, General Office



**LAKEFRONT**  
AT KEYSTONE



## PARK HIGHLIGHTS

- Peaceful lake in the middle of the park, surrounded by picnic areas and a walking trail
- Day care center within the park
- Micro-market vending stations in several buildings throughout the park
- Conference facilities available for use
- Free wi-fi equipped lobbies
- Free bike-share program provided by Zagster
- On-site building management
- Tenant-exclusive, 6,000 s.f. fitness center with fitness trainer on-site
- I-465 visibility and signage available
- Easy access to 96th Street, Keystone Avenue and I-465

[lakefrontatkeystone.com](http://lakefrontatkeystone.com)

TAMMY FAULK  
+1 317 810 7174  
[tammy.faulk@am.jll.com](mailto:tammy.faulk@am.jll.com)

JOHN ROBINSON  
+1 317 810 7172  
[john.robinson@am.jll.com](mailto:john.robinson@am.jll.com)

Owned by:



Leased by:

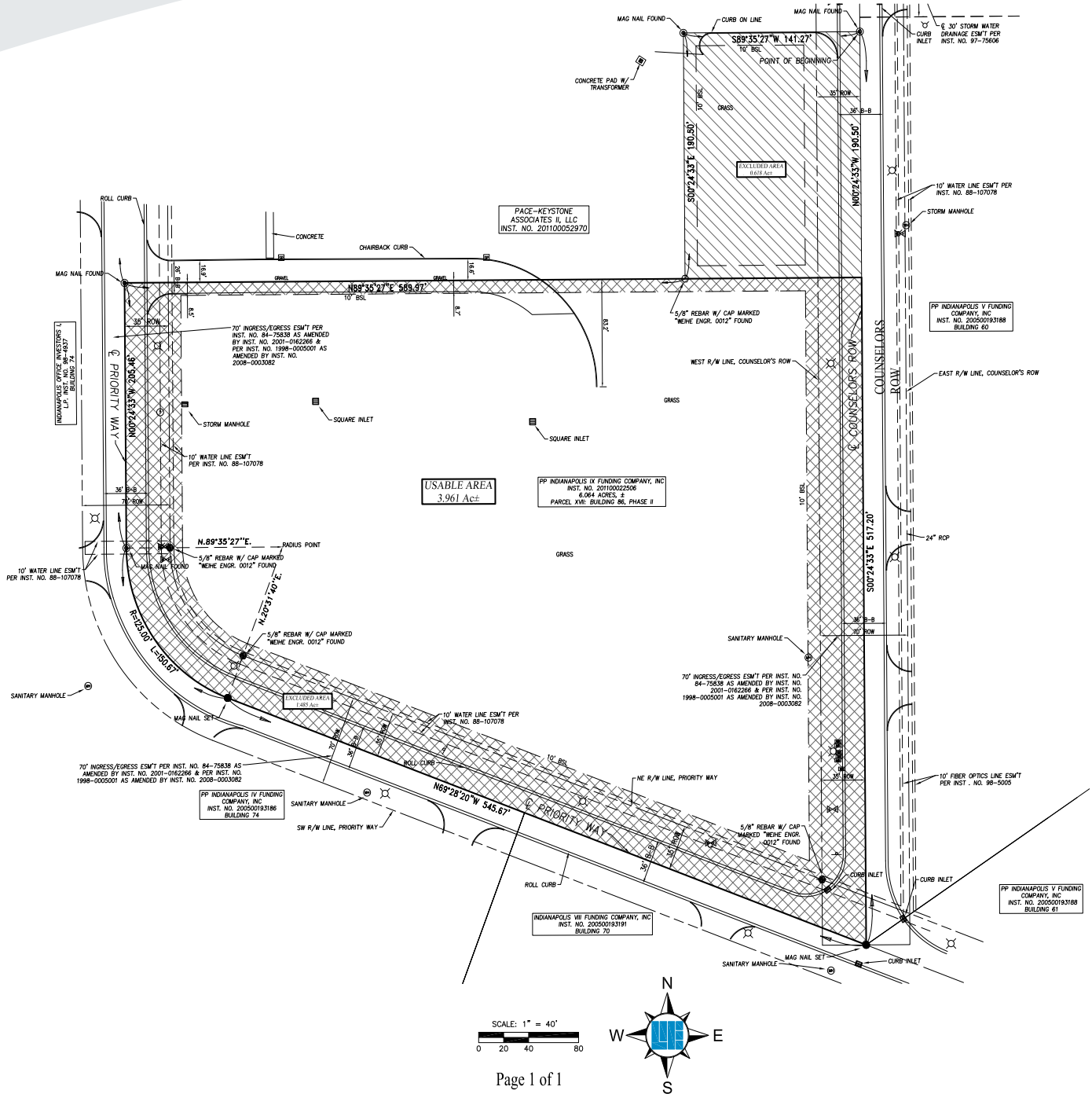


# SITE PLAN

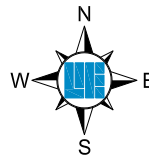
3610 Priority Way South Drive  
Indianapolis, IN 46240



## LAKEFRONT AT KEYSTONE



SCALE: 1" = 40'



Page 1 of 1

TAMMY FAULK  
+1 317 810 7174  
tammy.faulk@am.jll.com

JOHN ROBINSON  
+1 317 810 7172  
john.robinson@am.jll.com

Owned by:



Leased by:

