

# 500W

500 W JEFFERSON STREET  
LOUISVILLE, KENTUCKY



# Property Highlights

---

500W is a 576,645 square foot, 29-story, Class A office tower in the heart of downtown Louisville. The tower features Class A office space with panoramic views of Louisville and the Ohio River. It offers full and partial floor options, in both the high and low-rise sections, and includes over 103,000 contiguous square feet.



## Location

Accessible via three primary interstates, 500W's central location provides ultimate convenience for both tenants and their guests.

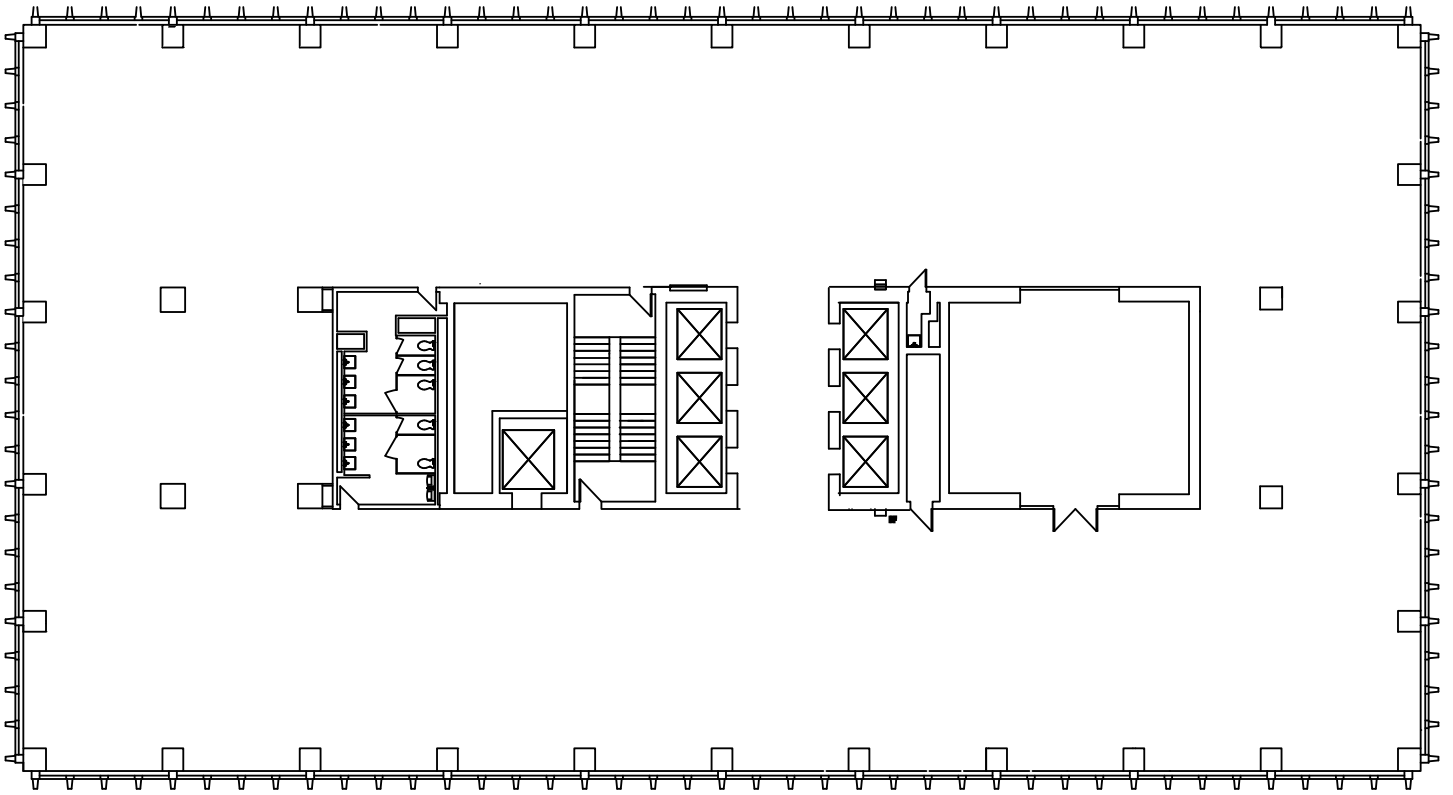
The property is ideally situated at the intersection of 5th and Jefferson Streets, sitting adjacent to the Courthouse. The building is located one block from 4th Street Live! and within minutes of the city's most sought-after dining and entertainment amenities.

## Amenities

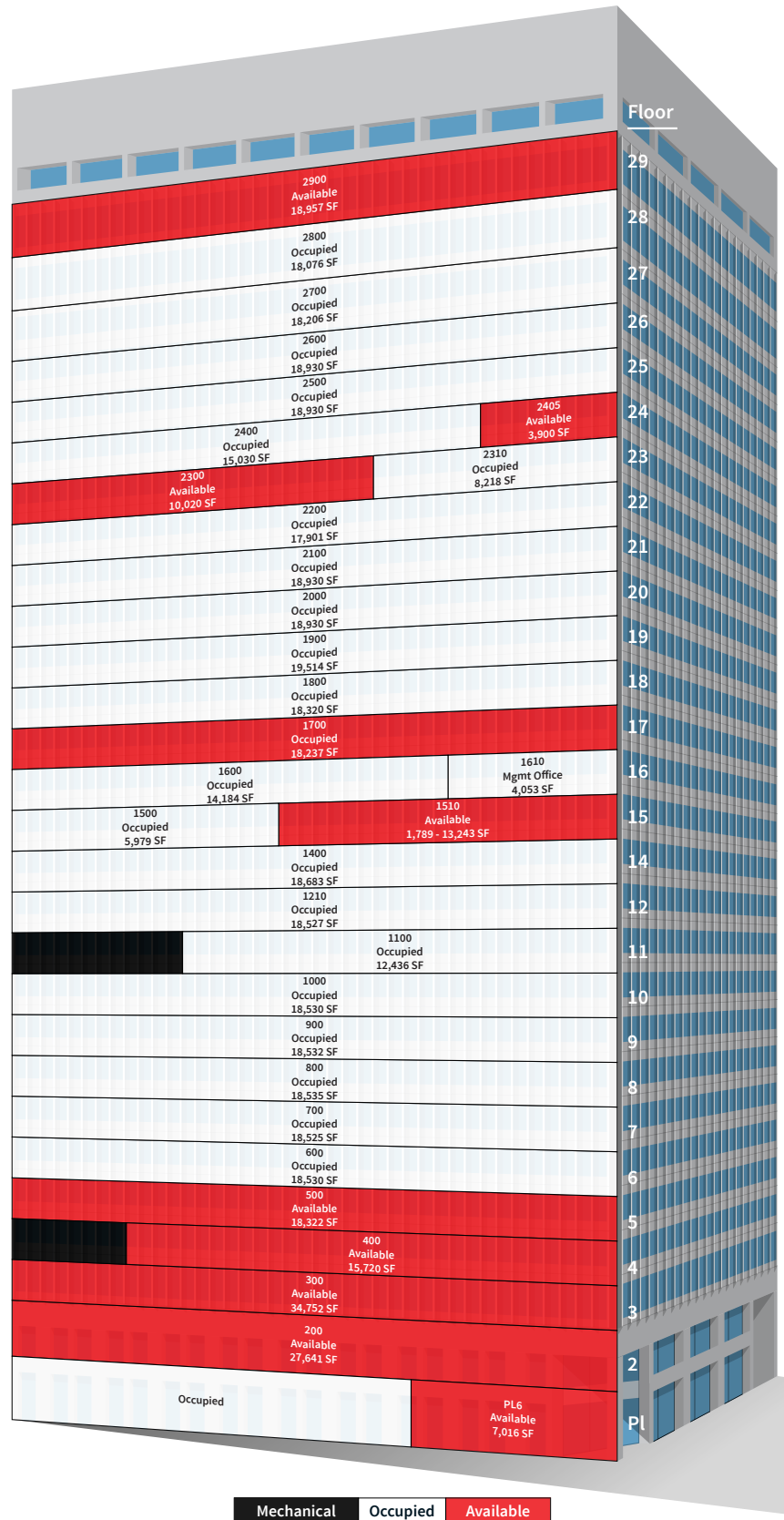
500W offers numerous on-site amenities for tenants and their guests, including:

- On-site parking with valet service
- 24-hour on-site security
- Building conference room
- Casual restaurant, deli, ATM and sundry shop.

# Floorplan



# Availability



Mechanical   Occupied   Available

# Location

- Hotels
- Dining
- Attractions & Entertainment



- 1 21c Hotel Louisville
- 2 Galt House Hotel
- 3 Aloft Downtown
- 4 Hyatt Regency
- 5 Marriott Downtown
- 6 SpringHills Suites Downtown
- 7 OMNI Hotel
- 8 The Seelbach Hilton Hotel
- 9 Embassy Suites Downtown

- 1 Louisville Slugger Museum & Bat Factory
- 2 KMAC Museum
- 3 The Alley Theater
- 4 Muhammad Ali Center
- 5 The Kentucky Center for the Performing Arts
- 6 KFC Yum! Center
- 7 Actors Theatre of Louisville
- 8 Kentucky International Convention Center
- 9 4th Street Live!

- 1 Boomer's Cafe
- 2 Subway
- 3 Proof on Main
- 4 Luigi's Pizzeria
- 5 Main Eatery
- 6 Morton's The Steakhouse
- 7 Mussell & Burger Bar
- 8 Bristol Bar & Grille Downtown
- 9 Atlantic No. 5
- 10 Heine Brother's Coffee
- 11 Starbucks
- 12 Craving's Restaurant
- 13 Rivue
- 14 Addis Cafe
- 15 Addis Grill

- 12 Milkwood
- 13 Bluegrass Brewing
- 14 Sidebar at Whiskey Row
- 15 Troll Pub Under the Bridge
- 16 Bearno's Pizza
- 17 Doc Crow's
- 18 El Barrio
- 19 Merle's Whiskey Kitchen
- 20 Impellizzeri's Pizza
- 21 Corner
- 22 Bistro 301
- 23 The Old Spaghetti Factory
- 24 Bazo's Fresh Mexican Grille
- 25 Osaka Japanese
- 26 T C's Sandwich Shoppe
- 27 Bendoya Sushi Bar
- 28 Quiznos
- 29 A P Grocery & Deli
- 30 Cheer King Star
- 31 Sunergos Coffee
- 32 Spinelli's Pizza
- 33 Jimmy John's
- 34 Panera Bread
- 35 Ev's Deli
- 36 Zoes Kitchen

- 28 Pita Pit
- 29 Qdoba Mexican Grill
- 30 Smashburger
- 31 Zoup!
- 32 Dunkin' Donuts
- 33 Chipotle
- 34 Sway
- 35 Starbucks
- 36 Starbucks
- 37 BLU Italian Grille
- 38 Starbucks
- 39 Birracibo
- 40 Bourbon Raw
- 41 Brazeiros Churrascaria
- 42 Goose Island Beer Bridge
- 43 Gordon Biersch Brewery
- 44 Guy Fieri's Smokehouse
- 45 Hard Rock Cafe
- 46 T.G.I. Friday's
- 47 Tavern on Fourth
- 48 The Fudgery
- 49 The Sports and Social Club
- 50 Oakroom
- 51 Starbucks
- 52 Catch 23

# Improvements & Amenities

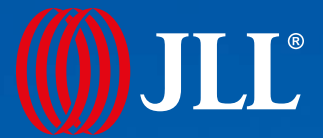


Under new ownership, 500W will undergo several capital improvement projects to enhance its Class A experience.

Building updates will include:

- State-of-the-art fitness center
- Tenant lounge
- Large conference / training room
- Lobby and elevator modernization





500 W Jefferson Street  
Louisville, Kentucky 40202

**Jeff Dreher, SIOR, MBA**  
jeff.dreher@am.jll.com  
+1 502 394 2519

**Rick Ashton, CCIM**  
rick.ashton@am.jll.com  
+1 502 394 2521

[jll.com](http://jll.com)

