

For Lease

Westchase Commons

150,957 SF CAMPUS

14,130 RSF AVAILABLE



3120 HAYES RD | HOUSTON, TX 77082

BUILDING FACTS

- 51,200 RSF Total
- 6.0/1,000 Parking
- Tenant controlled HVAC
- Ample power
- Semi - Dock high loading capabilities if needed
- Building and monument signage available
- Large efficient bays
- 18 ft. clear from deck to roof
- Ability to have high ceilings
- All usable space
- Expansion space available in neighboring building connected by walkway
- Strong ownership

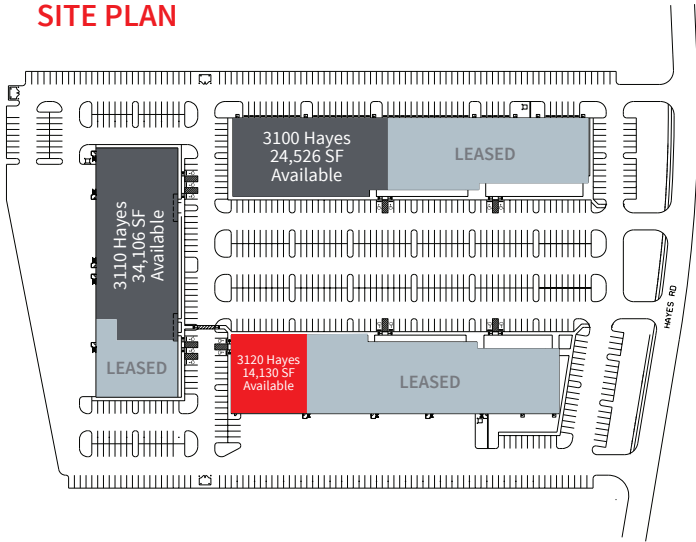


Amenities Nearby

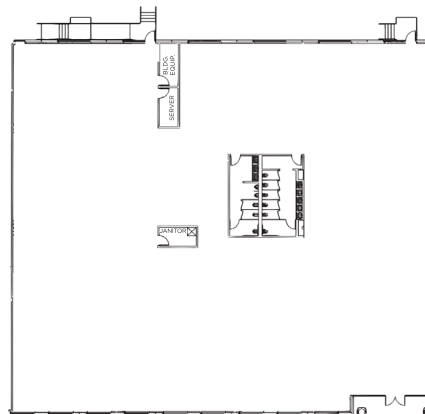
Westchase Commons



SITE PLAN

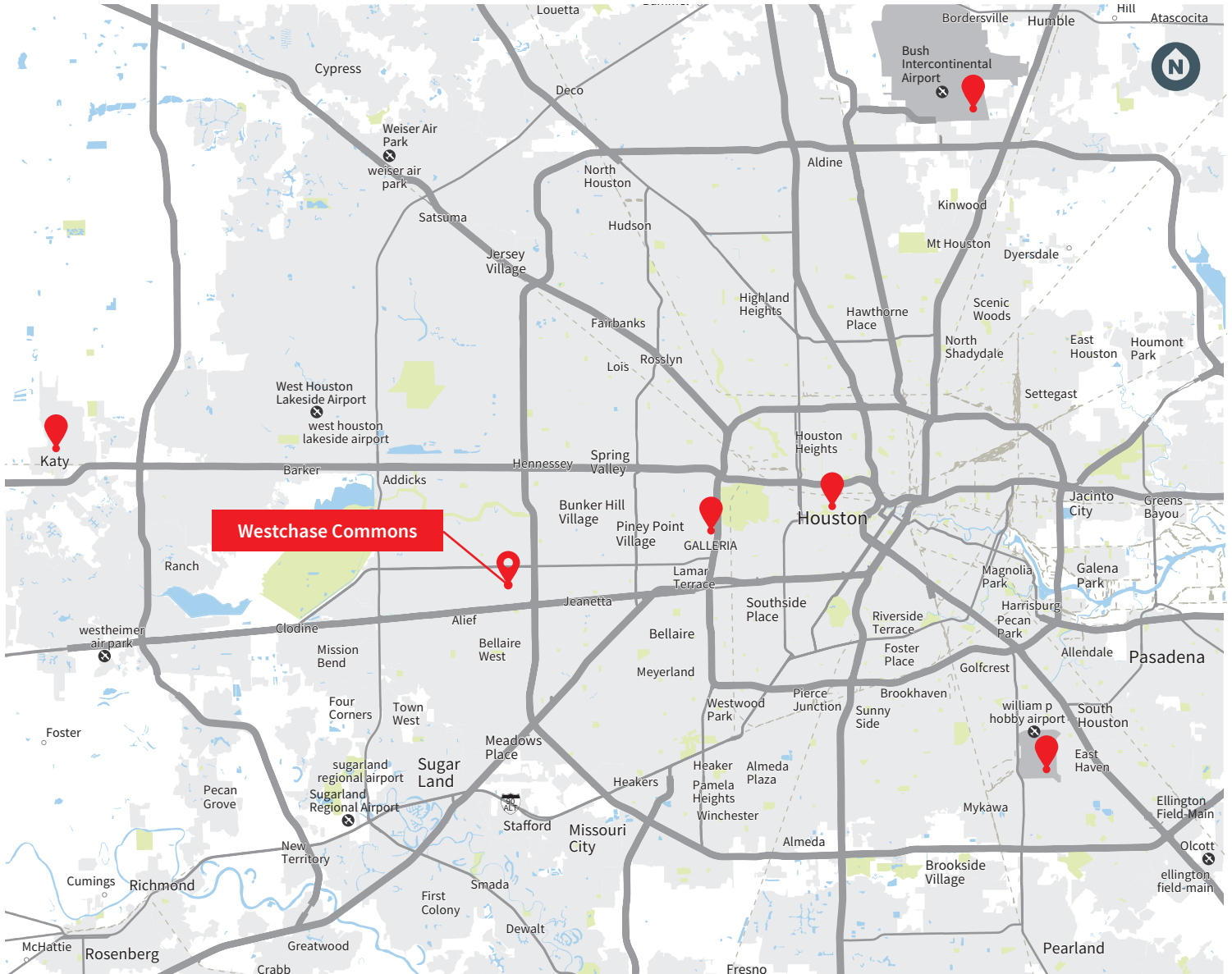


- Whole Foods, Starbucks, Cantina Laredo, Torchy's Tacos, Beck's Prime, Jason's Deli, Zoe's Kitchen, Salata, Dunkin' Donuts, Kolache Factory, Firehouse Subs, Taco Cabana
- 2 Mins: Royal Oaks Country Club
- 3 Mins: Fitness Connection, 365 Fitness & the Post Office
- 5 Mins: 20+ Hotels & 5 Daycares



**SUITE 288:
14,130 RSF**

Westchase Commons



DRIVE TIMES:

- 35 MIN to IAH (George Bush International) Airport
- 30 MIN to Houston Hobby Airport
- 25 MIN to Downtown Houston
- 20 MIN to Katy
- 15 MIN to the Galleria
- 2 MIN to Beltway 8

For more information, contact:

MATT PRUITT
 +1 713 588 3400
 matt.pruitt@am.jll.com

CHRISTIAN.CANION
 +1 713 588 3400
 christian.canion@am.jll.com

www.wc-commons.com

Although information has been obtained from sources deemed reliable, neither Owner nor JLL makes any guarantees, warranties or representations, express or implied, as to the completeness or accuracy as to the information contained herein. Any projections, opinions, assumptions or estimates used are for example only. There may be differences between projected and actual results, and those differences may be material. The Property may be withdrawn without notice. Neither Owner nor JLL accepts any liability for any loss or damage suffered by any party resulting from reliance on this information. If the recipient of this information has signed a confidentiality agreement regarding this matter, this information is subject to the terms of that agreement. ©2019. Jones Lang LaSalle IP, Inc. All rights reserved

