



# For Lease

## Office suite available

- 1,552 s.f. on second floor
- Nice suite entrance with sidelights
- Two nice private offices on the window line
- Location is within minutes of retail, banks, hotels and restaurants, Interstate-64 and Interstate-264
- Walk to Panera Bread for coffee

**9000 Wessex Place  
Louisville, KY 40222**

**Patrick J. Richardson, CCIM**

+1 502 394 2515

[pat.richardson@am.jll.com](mailto:pat.richardson@am.jll.com)

**D. Yandell Wood, Jr., SIOR**

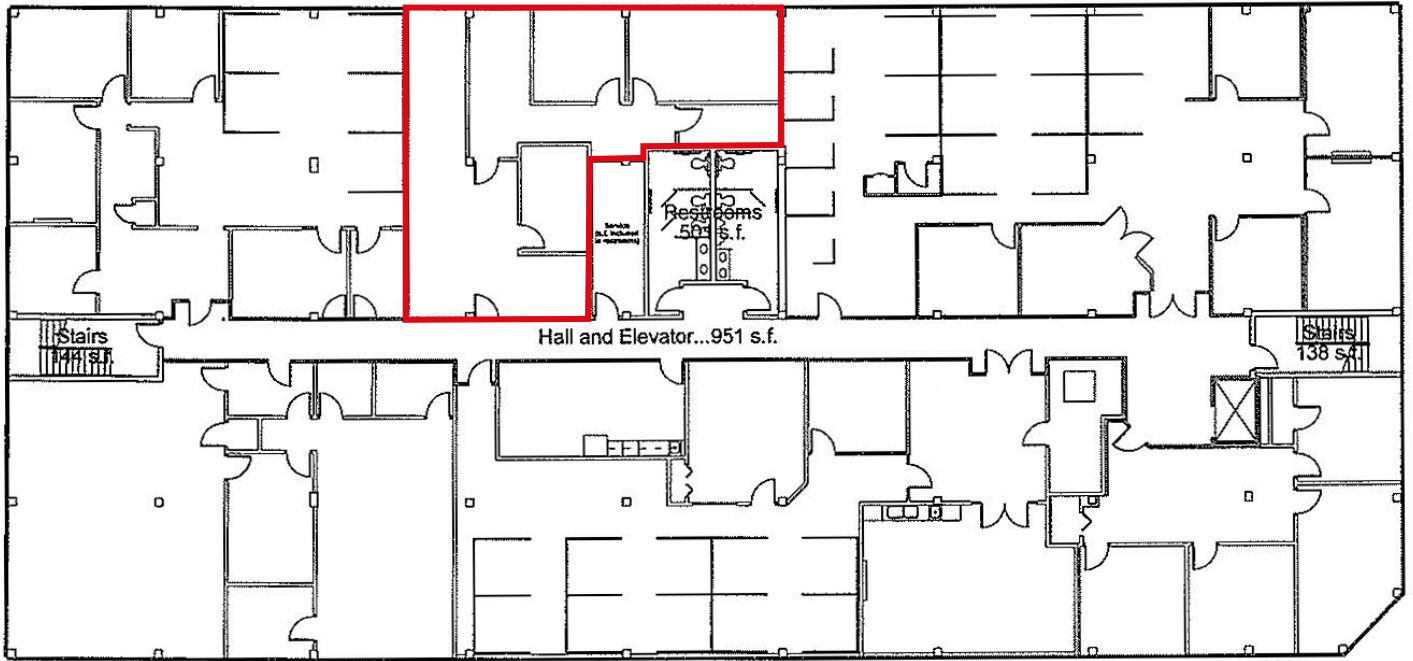
+1 502 394 2518

[yandell.wood@am.jll.com](mailto:yandell.wood@am.jll.com)

[jll.com/louisville](http://jll.com/louisville)

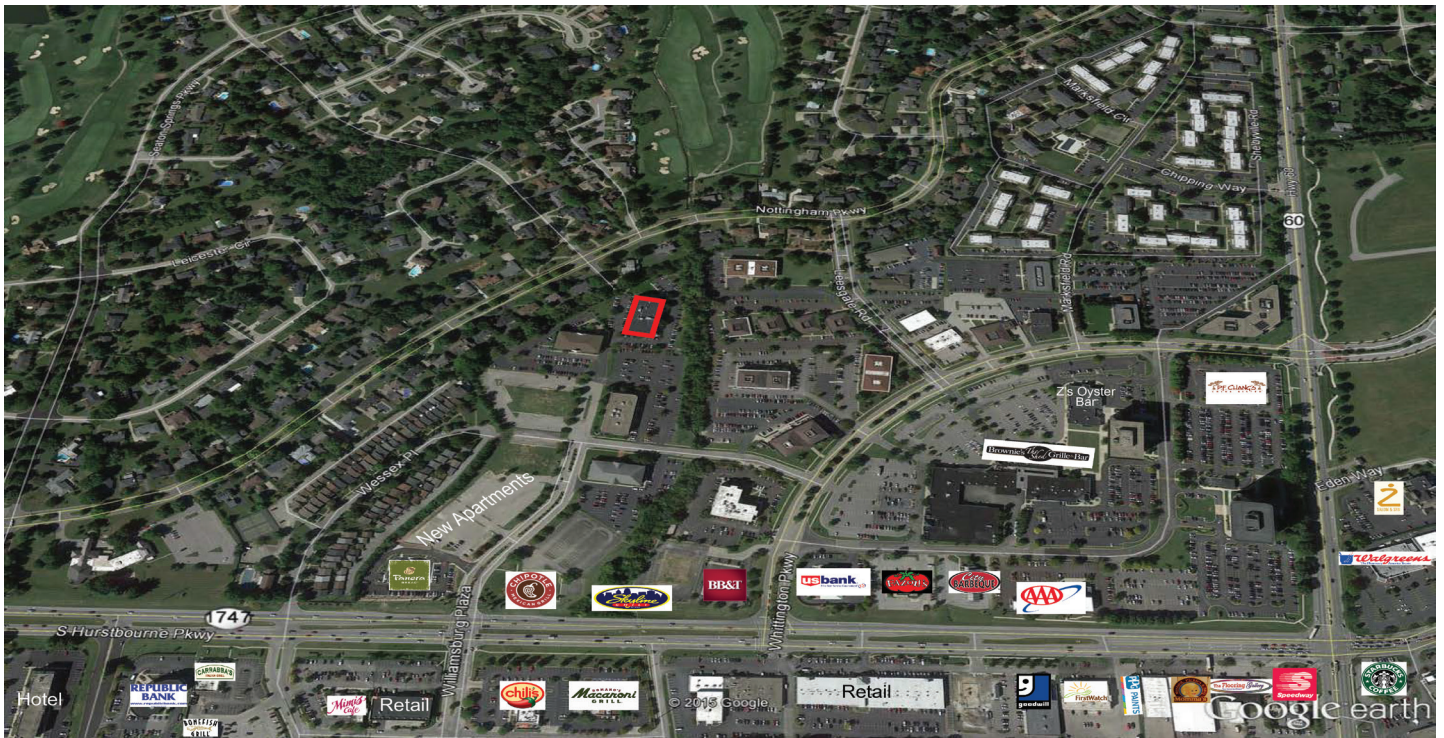


# Floor plan



1,552 RSF

# Amenities map



## DISCLAIMER

©2019 Jones Lang LaSalle IP, Inc. All rights reserved. All information contained herein is from sources deemed reliable; however, no representation or warranty is made to the accuracy thereof.

