



For lease

CBD Office Space

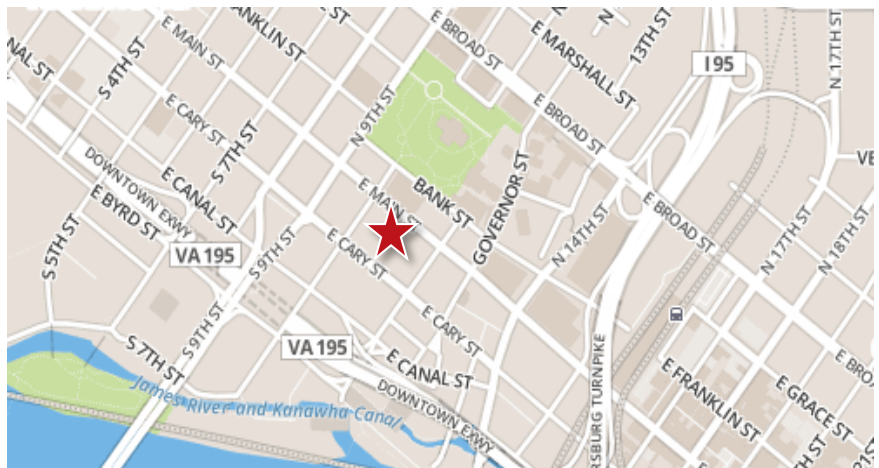
The Branch Building

1015 East Main Street
Richmond, Virginia 23219



Features

- Listed on National Register of historic places
- Historic ironfront building built in 1870
- Approximately 15,900 s.f. building
- Convenient to Capitol Square, Financial District, Shockoe Slip
- 2,926 s.f. available on the 1st floor
- 1,469 s.f. available on the 3rd floor
- Asking \$17.00 per s.f., full service
- On-site ownership
- Exterior signage provides Main Street visibility



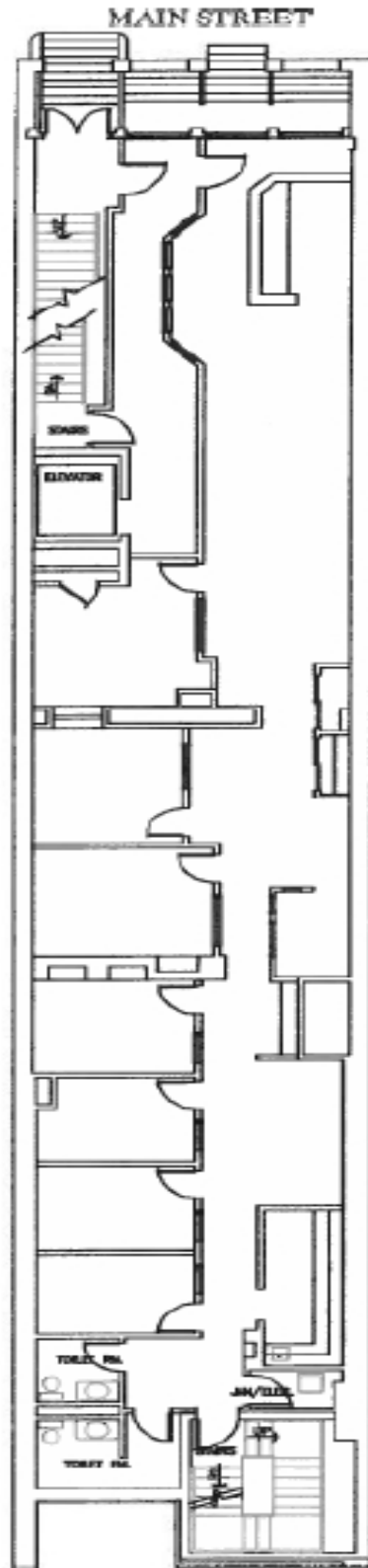
Gareth Jones
+1 804 200 6453
GarethO.Jones@am.jll.com

Adam Lawson
+1 804 200 6384
Adam.Lawson@am.jll.com

Photos



Floor plan
1st floor

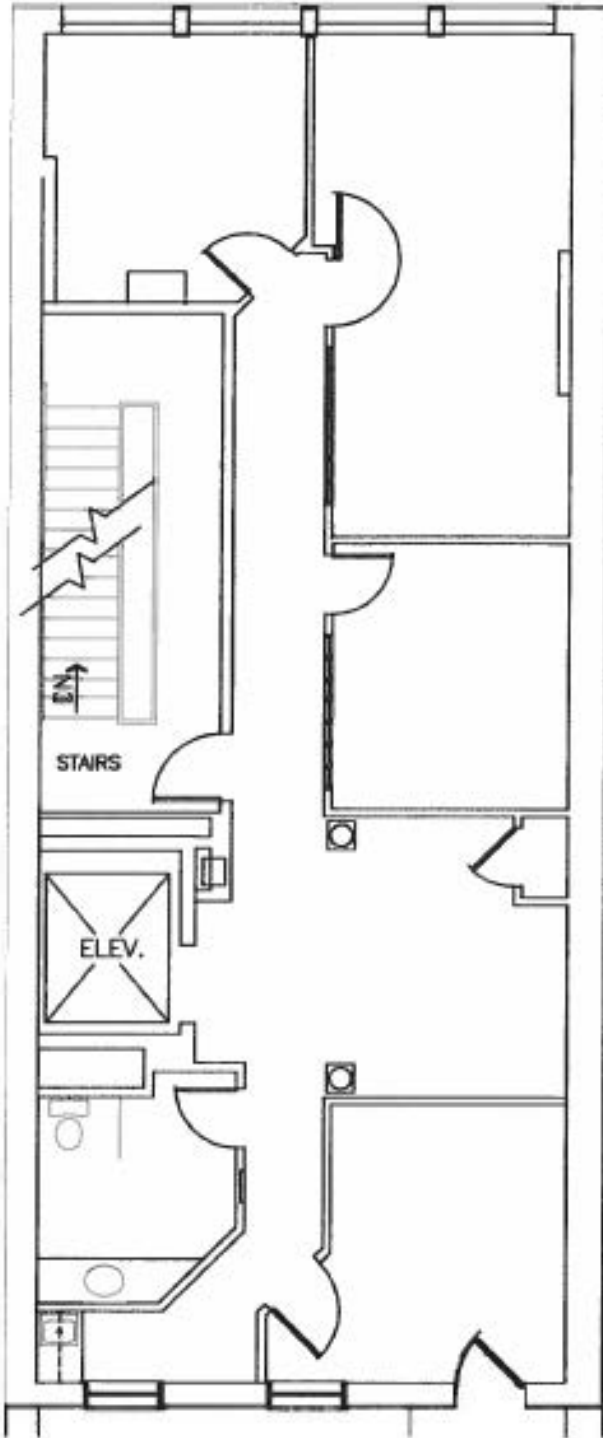


DISCLAIMER

Although information has been obtained from sources deemed reliable, Owner does not warrant the accuracy, completeness, or reliability of the information contained herein, and offers the Property without express or implied warranties of any kind. The Property may be withdrawn without notice. If the recipient of this information has signed a confidentiality agreement regarding this matter, this information is subject to the terms of that agreement. ©2017, Jones Lang LaSalle. All rights reserved.

Floor plan
3rd floor

MAIN STREET



DISCLAIMER

Although information has been obtained from sources deemed reliable, Owner, Jones Lang LaSalle, and/or their representatives, brokers or agents make no guarantees as to the accuracy of the information contained herein, and offer the Property without express or implied warranties of any kind. The Property may be withdrawn without notice. If the recipient of this information has signed a confidentiality agreement regarding this matter, this information is subject to the terms of that agreement. ©2017. Jones Lang LaSalle. All rights reserved.