



# For Sublease

## Property Overview

Space	Suite 505 / 2,854 SF
Term	Lease Expires 11/05/2021
Availability	Available Now
Rental Rate	\$25.00 Gross

### Space Features

- Newer buildout
- Open layout with three offices and a conference room
- Great views from top floor of building

3305 Northland  
3305 Northland Drive  
Austin, Texas 78731

Spencer Holbert  
+1 512 225 1731  
[spencer.holbert@am.jll.com](mailto:spencer.holbert@am.jll.com)

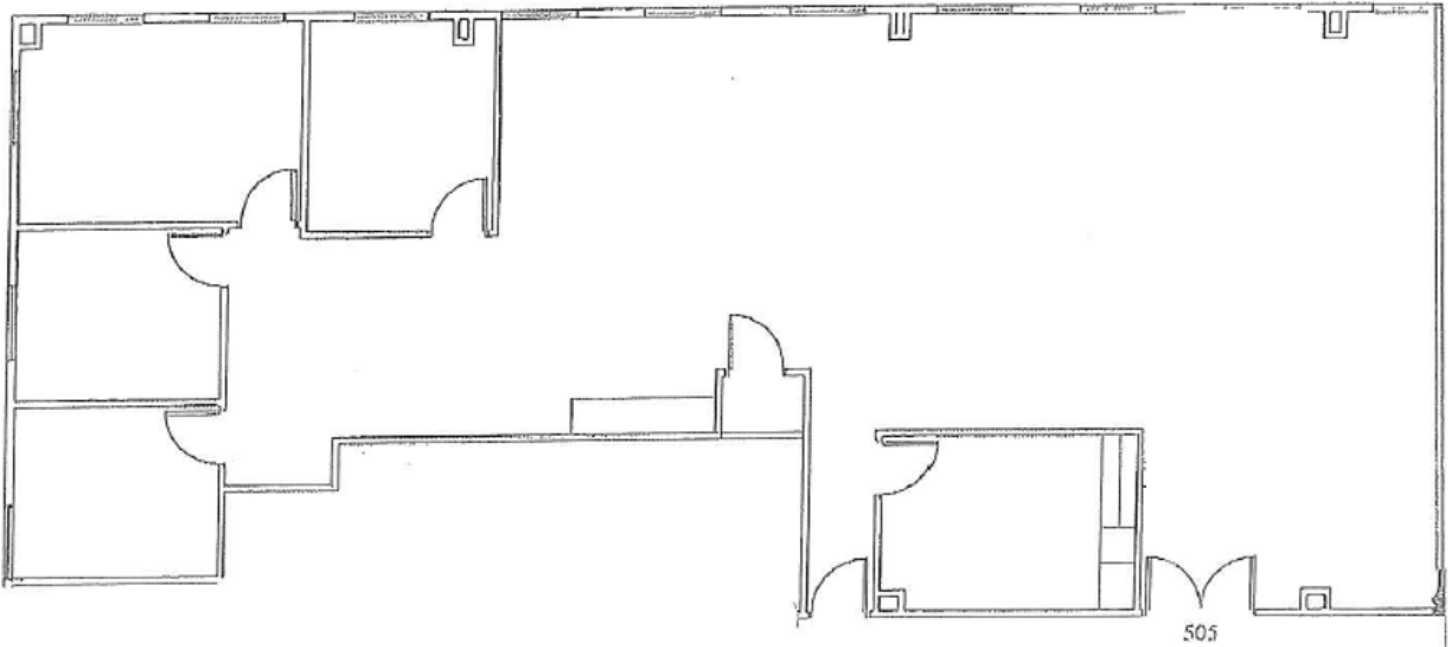
Harrison Schuhmacher  
+1 512 368 7163  
[harrison.schuhmacher@am.jll.com](mailto:harrison.schuhmacher@am.jll.com)

[www.jll.com/austin](http://www.jll.com/austin)

# Suite 505 | 2,854 SF

3305 Northland Drive

*For Sublease*



**For more information, contact:**

Spencer Holbert

+1 512 225 1731

[spencer.holbert@am.jll.com](mailto:spencer.holbert@am.jll.com)

Harrison Schuhmacher

+1 512 368 7163

[harrison.schuhmacher@am.jll.com](mailto:harrison.schuhmacher@am.jll.com)

The information contained herein is obtained from sources believed to be reliable. However, Jones Lang LaSalle makes no guarantees, warranties or representations as to the completeness or accuracy thereof. The presentation of this property is submitted subject to errors, omissions, change of price or conditions, and is subject to prior sale, lease or withdrawal without notice





Suite 505 | 2,854 SF

3305 Northland Drive

*For Sublease*



**For more information, contact:**

Spencer Holbert

+1 512 225 1731

[spencer.holbert@am.jll.com](mailto:spencer.holbert@am.jll.com)

Harrison Schuhmacher

+1 512 368 7163

[harrison.schuhmacher@am.jll.com](mailto:harrison.schuhmacher@am.jll.com)

The information contained herein is obtained from sources believed to be reliable. However, Jones Lang LaSalle makes no guarantees, warranties or representations as to the completeness or accuracy thereof. The presentation of this property is submitted subject to errors, omissions, change of price or conditions, and is subject to prior sale, lease or withdrawal without notice

