

FOR LEASE

499

EDISON COURT



± 4,700 SF WAREHOUSE/OFFICE SUITE WITH STORAGE SPACE FOR LEASE

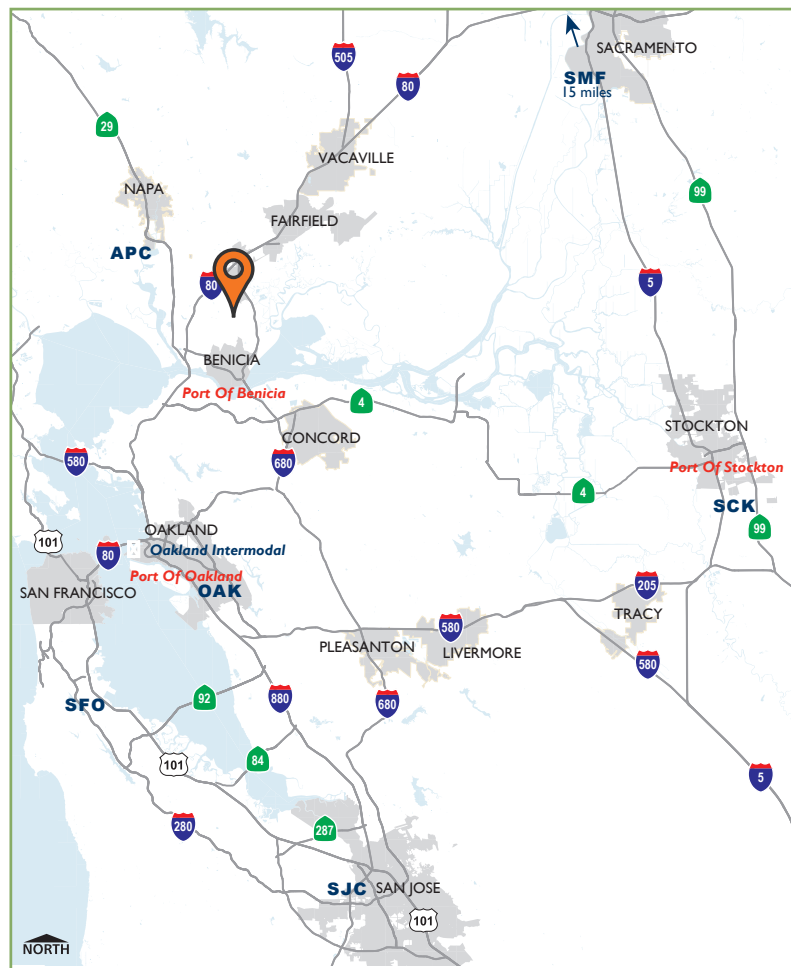
499 Edison Court, Suite C, Fairfield, CA

- ±2,900 SF warehouse space
- ±1,800 office area
- Approximate mezzanine storage area is ±400 SF
- One (1) 12' x 14' grade level loading door
- 200 amp, 120/208 volt electrical service
- Skylights in warehouse with R-19 ceiling insulation

Location Details:

495, 497, 499 Edison Court is a uniquely well-located and highly-visible multi-tenant light industrial property in the Cordelia Industrial Park at the intersection of Interstates 80, 680 and Highway 12.

Located midway between San Francisco / Oakland and Sacramento, the Property has excellent access to Napa and Solano Counties and the surrounding Bay Area. The buildings offers 20'-24' clear heights, convenient parking, and flexible floor plans.



To Schedule a Tour or For More Information, Please Contact:

THE DOWLING-BRACCO TEAM OF JLL

WWW.DBREA.com | www.US.JLL.com



CHRIS NEEB
 chris.neeb@am.jll.com
 (707) 495 7777
 RE License No: 01324612

MATT BRACCO
 matt.bracco@am.jll.com
 (925) 948 1305
 RE License No: 01185434

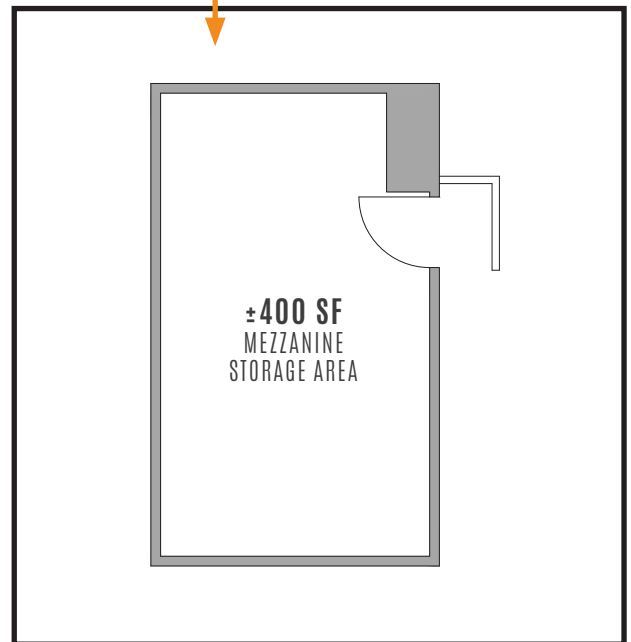
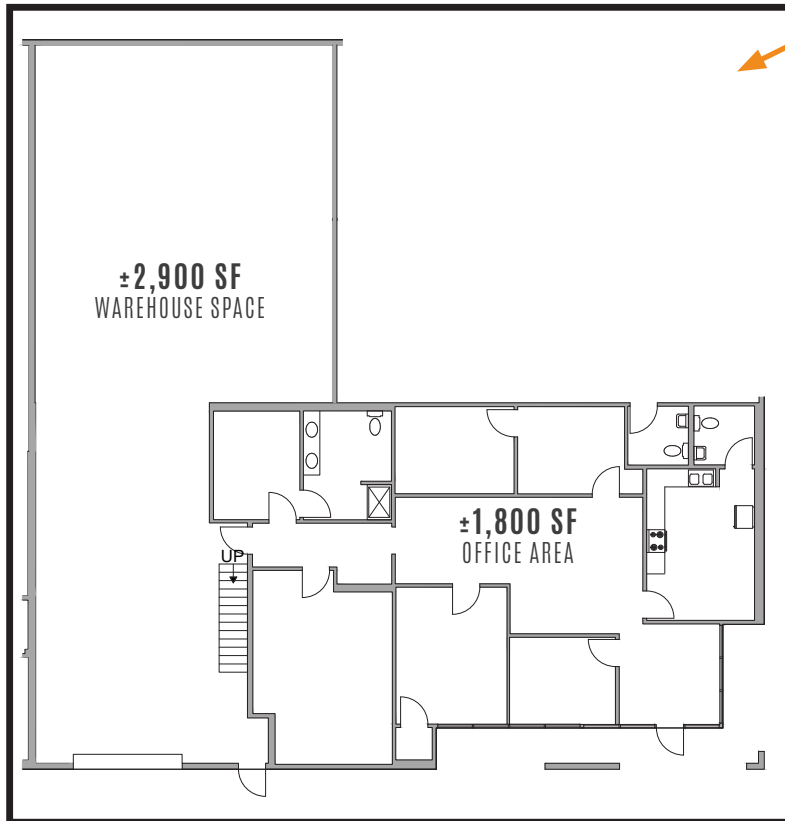
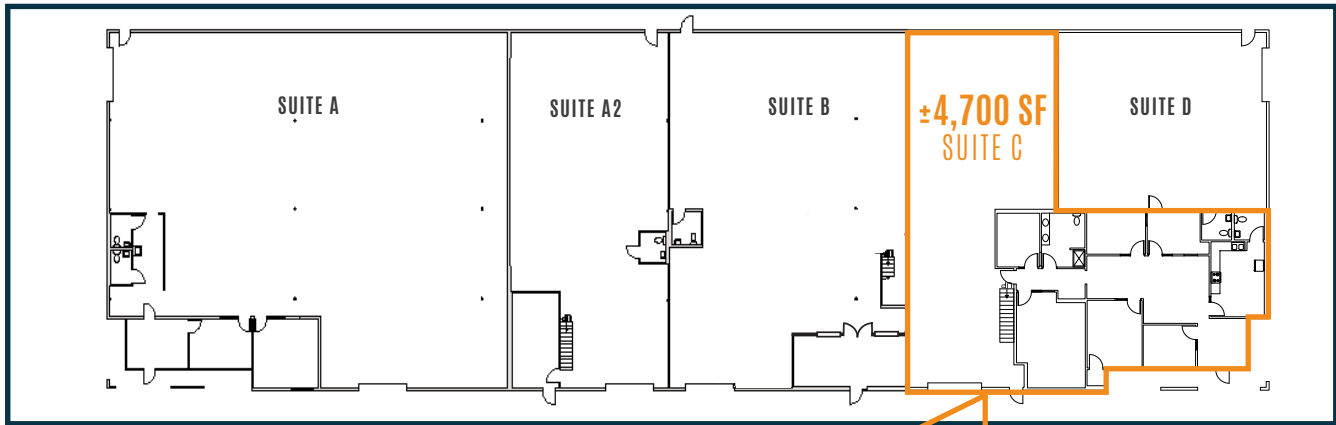
GLEN DOWLING
 glen.dowling@am.jll.com
 (707) 227 7800
 RE License No: 00890450

FOR LEASE

SITE PLAN

4 9 9

EDISON COURT



To Schedule a Tour or For More Information, Please Contact:

THE DOWLING-BRACCO TEAM OF JLL

WWW.DBREA.com | www.US.JLL.com



CHRIS NEEB
chris.neeb@am.jll.com
(707) 495 7777
RE License No: 01324612

MATT BRACCO
matt.bracco@am.jll.com
(925) 948 1305
RE License No: 01185434

GLEN DOWLING
glen.dowling@am.jll.com
(707) 227 7800
RE License No: 00890450