

FOR LEASE

497

EDISON COURT



± 7,200 SF WAREHOUSE SPACE AVAILABLE FOR LEASE

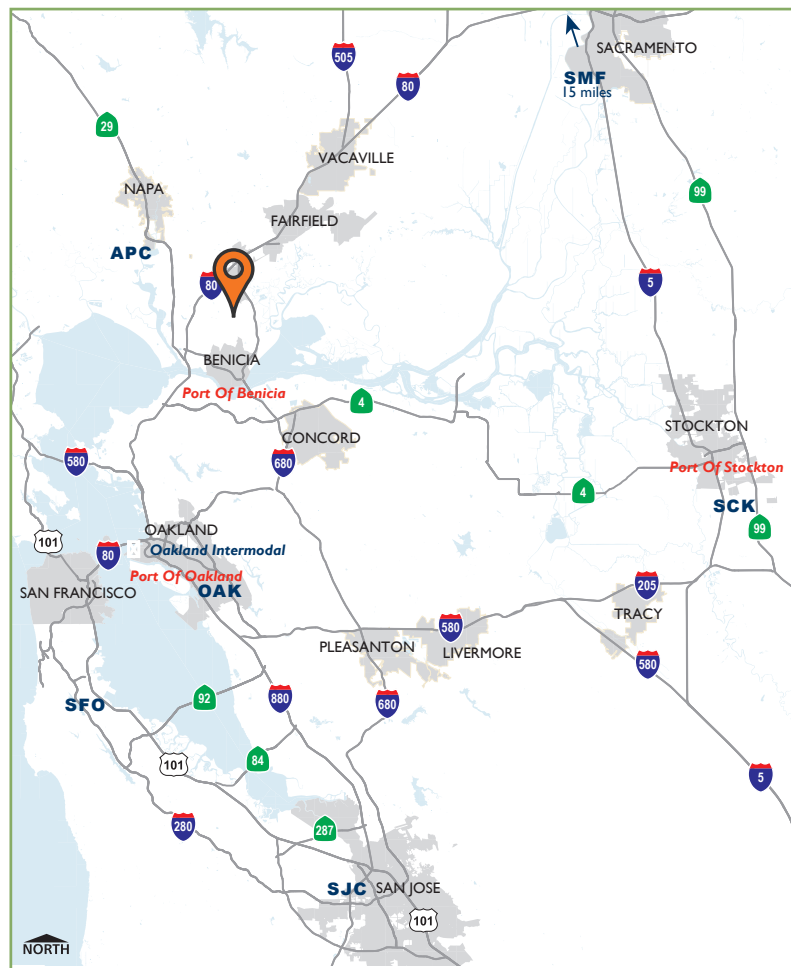
497 Edison Court, Suite A, Fairfield, CA

- ±7,200 SF Warehouse Space for Lease
- ±2,000 SF Office Space
- 22' - 24' Clear Height in Warehouse Area
- 200 Amps of 120/208 Volt, Electrical Service
- One (1) 12' x 14' Grade-Level Loading Door

Location Details:

495, 497, 499 Edison Court is a uniquely well-located and highly-visible multi-tenant light industrial property in the Cordelia Industrial Park at the intersection of Interstates 80, 680 and Highway 12.

Located midway between San Francisco / Oakland and Sacramento, the Property has excellent access to Napa and Solano Counties and the surrounding Bay Area. The buildings offers 20'-24' clear heights, convenient parking, and flexible floor plans.



To Schedule a Tour or For More Information, Please Contact:

THE DOWLING-BRACCO TEAM OF JLL

WWW.DBREA.com | www.US.JLL.com



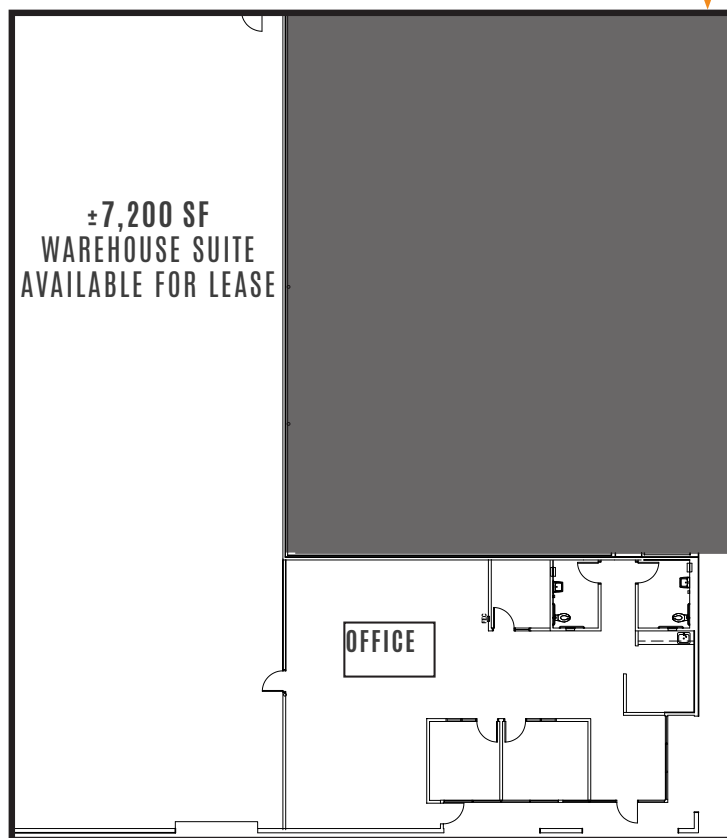
CHRIS NEEB
 chris.neeb@am.jll.com
 (707) 495 7777
 RE License No: 01324612

MATT BRACCO
 matt.bracco@am.jll.com
 (925) 948 1305
 RE License No: 01185434

GLEN DOWLING
 glen.dowling@am.jll.com
 (707) 227 7800
 RE License No: 00890450

SITE PLAN

Suite A ±7,200 SF



To Schedule a Tour or For More Information, Please Contact:

THE DOWLING-BRACCO TEAM OF JLL

WWW.DBREA.com | www.US.JLL.com



CHRIS NEEB
chris.neeb@am.jll.com
(707) 495 7777
RE License No: 01324612

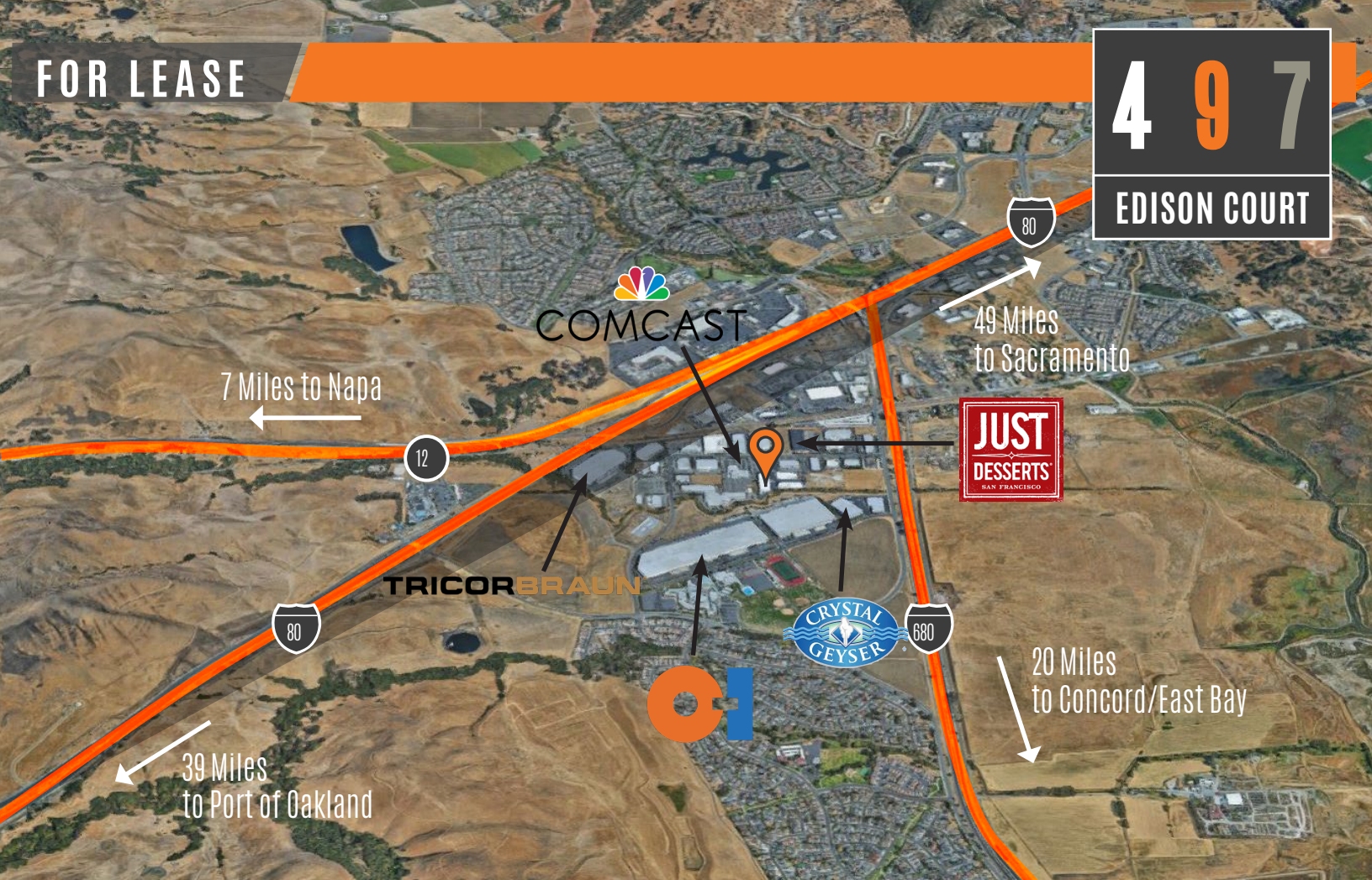
MATT BRACCO
matt.bracco@am.jll.com
(925) 948 1305
RE License No: 01185434

GLEN DOWLING
glen.dowling@am.jll.com
(707) 227 7800
RE License No: 00890450

FOR LEASE

4 9 7

EDISON COURT



To Schedule a Tour or For More Information, Please Contact:

THE DOWLING-BRACCO TEAM OF JLL

WWW.DBREA.com | www.US.JLL.com



CHRIS NEEB
chris.neeb@am.jll.com
 (707) 495 7777
 RE License No: 01324612

MATT BRACCO
matt.bracco@am.jll.com
 (925) 948 1305
 RE License No: 01185434

GLEN DOWLING
glen.dowling@am.jll.com
 (707) 227 7800
 RE License No: 00890450