

OFFICE SPACE FOR LEASE

# Harold Poll Building

110 UNION STREET | SEATTLE, WA 98101



## SEATTLE'S PREMIERE CREATIVE OFFICE

The timeless Harold Poll Building features four floors of beautifully built-out creative office space above retail with an irreplaceable location at the corner of First & Union, just steps away from Pike Place Market and popular Seattle destinations.

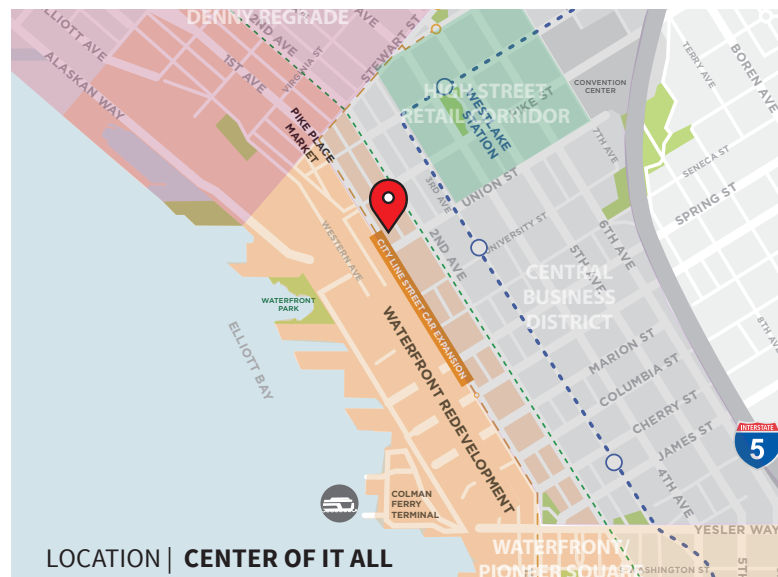
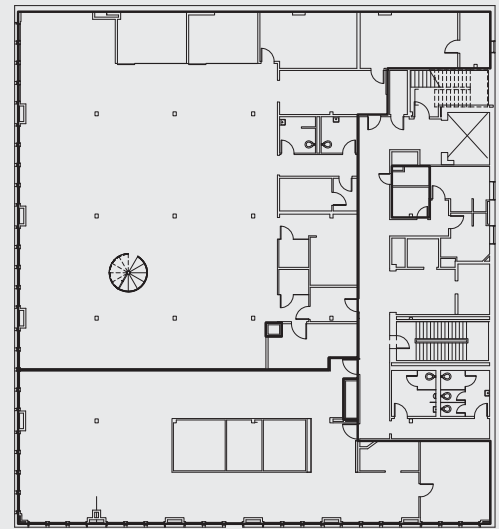


## BUILDING HISTORY AND FEATURES

A designated historic building in the heart of downtown, the lower two-story portion of the property was constructed in 1890 and 1903. Three additional stories were added in 1910, becoming home to the Bon Marche until 1929. Purchased by Harold Poll in 1937, it has remained in the family's hands since then.

- + At the center of the Pike-Pine retail corridor with unparalleled access to retail, restaurants, freeways and transit
- + Artfully renovated and seismically retrofitted
- + High, open ceilings and efficient, side-loaded floor plates make spaces feel larger
- + Operable windows and unique, artistic features throughout
- + On-site retail includes Japonessa and Caffe Ladro

## FLOOR PLAN | TYPICAL FLOOR



## LOCATION | CENTER OF IT ALL

### CONTACT

**Lisa Stewart**  
+1 206 607 1786  
lisa.stewart@am.jll.com

**Kathryn Pope**  
+1 206 607 1741  
kathryn.pope@am.jll.com

Jones Lang LaSalle Brokerage, Inc.

DISCLAIMER © 2020 Jones Lang LaSalle IP, Inc. All rights reserved. All information contained herein is from sources deemed reliable; however, no representation or warranty is made to the accuracy thereof.



jll.com/seattle