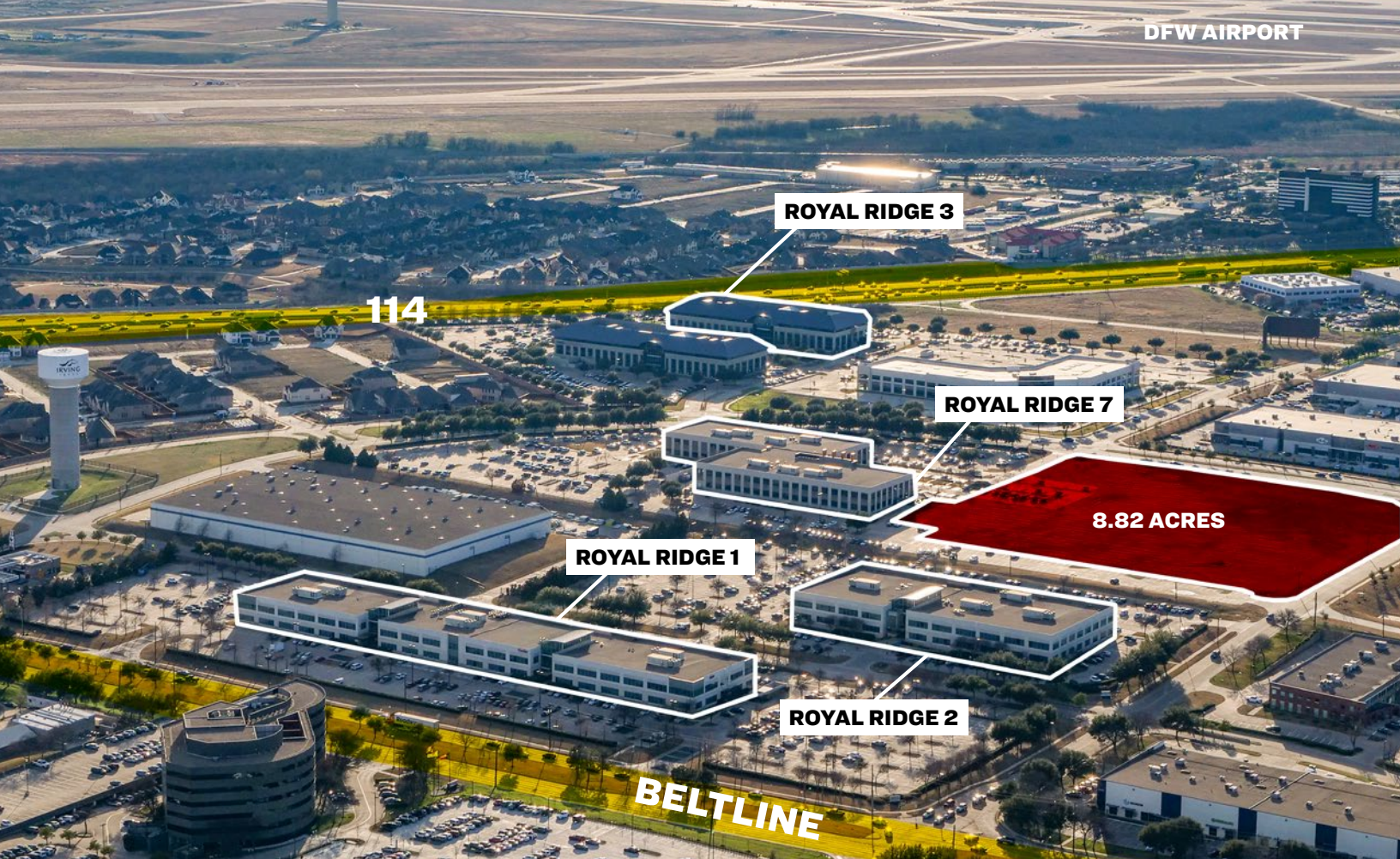




# ROYALRIDGE 7

- 23,142 RSF AVAILABLE
- 6 PER 1,000 PARKING

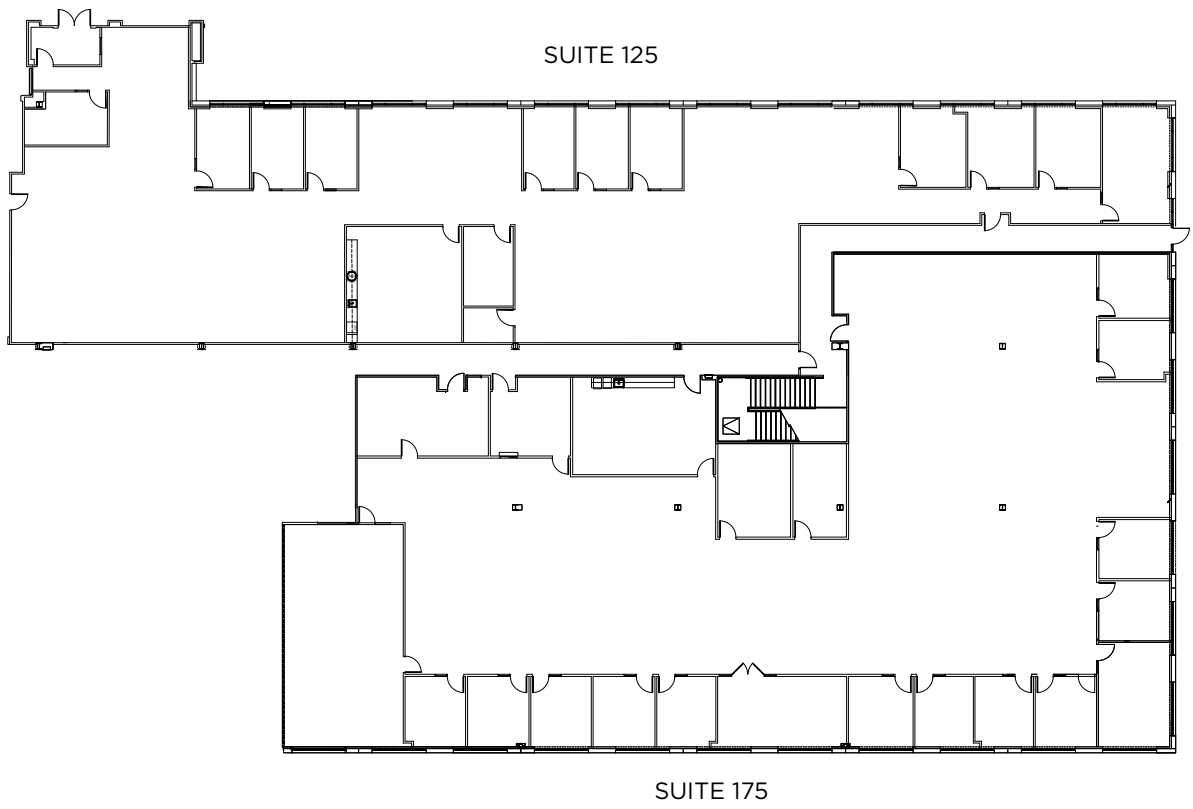


## BUILDING INFORMATION | AMENITIES NEARBY

- 133,853 rsf; 2 Stories
- 6 per 1,000 Parking
- Built in 2001
- Expansion Land Available
- Fiber Providers: AT&T, Frontier and MCI
- +/- 67,000 SF Floor Plates
- Starbucks, Chipotle, Jimmy John's, Whataburger, McAllister's Deli, McDonald's, Local Diner, Cavali Pizza, Salsa's Mexican, Zushi Wok and Grill
- Approximately 20 Hotels in the Immediate Area Including The DFW Airport Marriott, Westin, and Sheraton
- Close Proximity to DFW Airport
- Tenant Cafe located at Royal Ridge 2



**AVAILABLE SPACE | SUITE 125 - 23,142 rsf**





3625 W Royal Lane  
Irving, TX 75063



FOR LEASING INFORMATION:  
JOHN BROWNLEE | [j.brownlee@am.jll.com](mailto:j.brownlee@am.jll.com)  
MICHAEL WILLIAMS | [michaelc.williams@am.jll.com](mailto:michaelc.williams@am.jll.com)  
**+1 214 438 6100**

Although information has been obtained from sources deemed reliable, neither Owner nor JLL makes any guarantees, warranties or representations, express or implied, as to the completeness or accuracy as to the information contained herein. Any projections, opinions, assumptions or estimates used are for example only. There may be differences between projected and actual results, and those differences may be material. The Property may be withdrawn without notice. Neither Owner nor JLL accepts any liability for any loss or damage suffered by any party resulting from reliance on this information. If the recipient of this information has signed a confidentiality agreement regarding this matter, this information is subject to the terms of that agreement. ©2019. Jones Lang LaSalle IP, Inc. All rights reserved.