



- Rate: Call Brokers for Rate
- Parking Ratio: 1/1,000
- Flexible Lease terms available*

*thru 9/30/25. Call to discuss

15,500 – 30,000 SF FOR SUBLEASE

High-End Creative Office

240 SE CLAY - PORTLAND OR

FOR LEASING INFORMATION:

Craig Reinhart

Licensed in OR
+1 503 937 8188
craig.reinhart@am.jll.com

Eric Turner

Licensed in OR
+1 503 46 3670
eric.turner@am.jll.com

Cayla Wardenburg

Licensed in OR
+1 503 546 3661
cayla.wardenburg@am.jll.com

Candace Lounsbury

Licensed in OR & WA
+1 503 937 2131
candace.lounsbury@am.jll.com





THE SPACE


1/1000
PARKING

Move-in ready, perfect for tech & other high growth companies looking creative space with a flexible term.


PLUG &
PLAY

Location proximity 2 blocks to streetcar and 5 blocks to MAX.

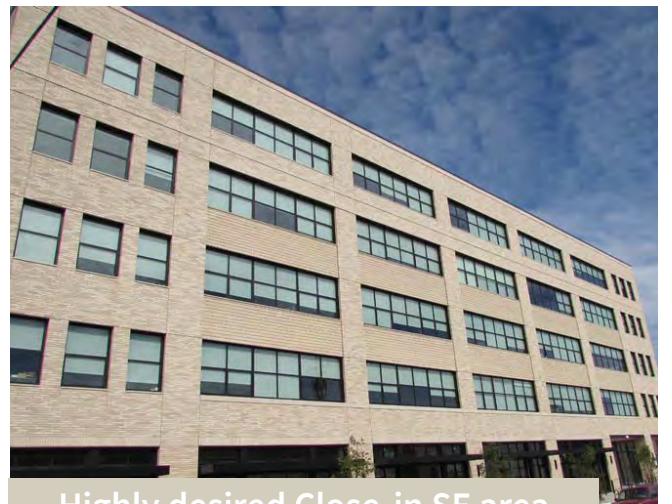

LEED
BUILDING

Shared outdoor deck, with sweeping city views.

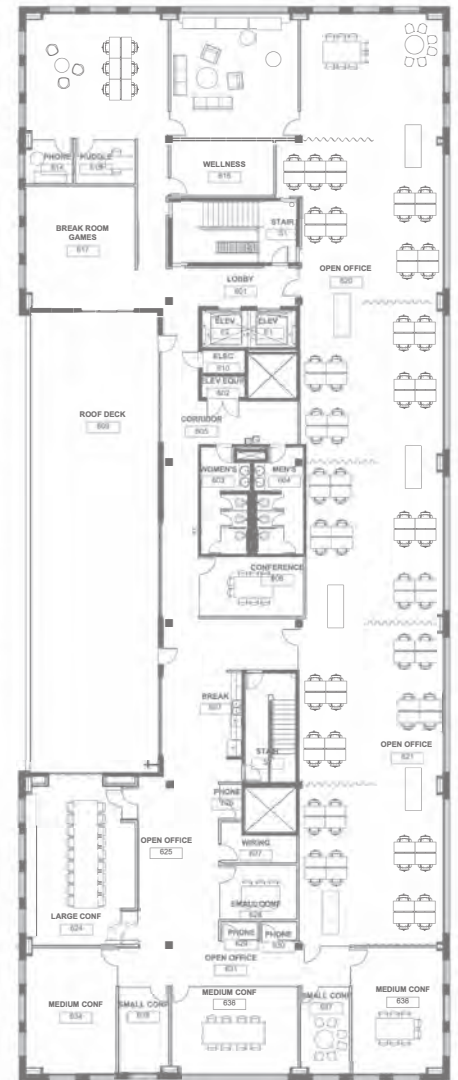
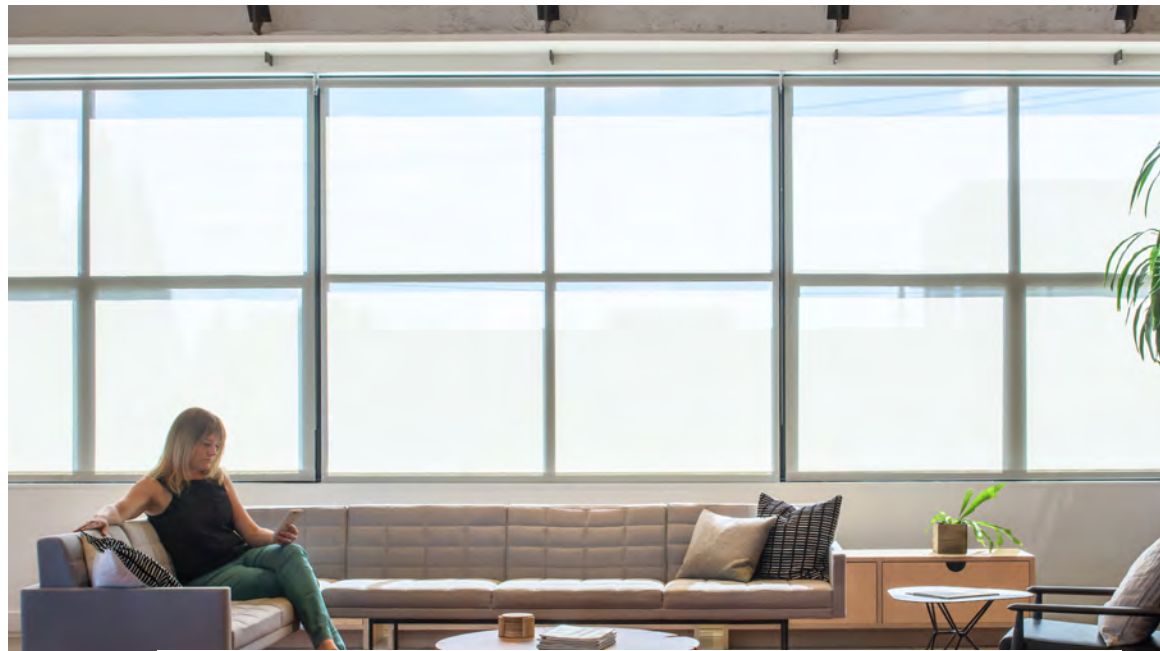

BIKERS
PARADISE



Some furniture negotiable



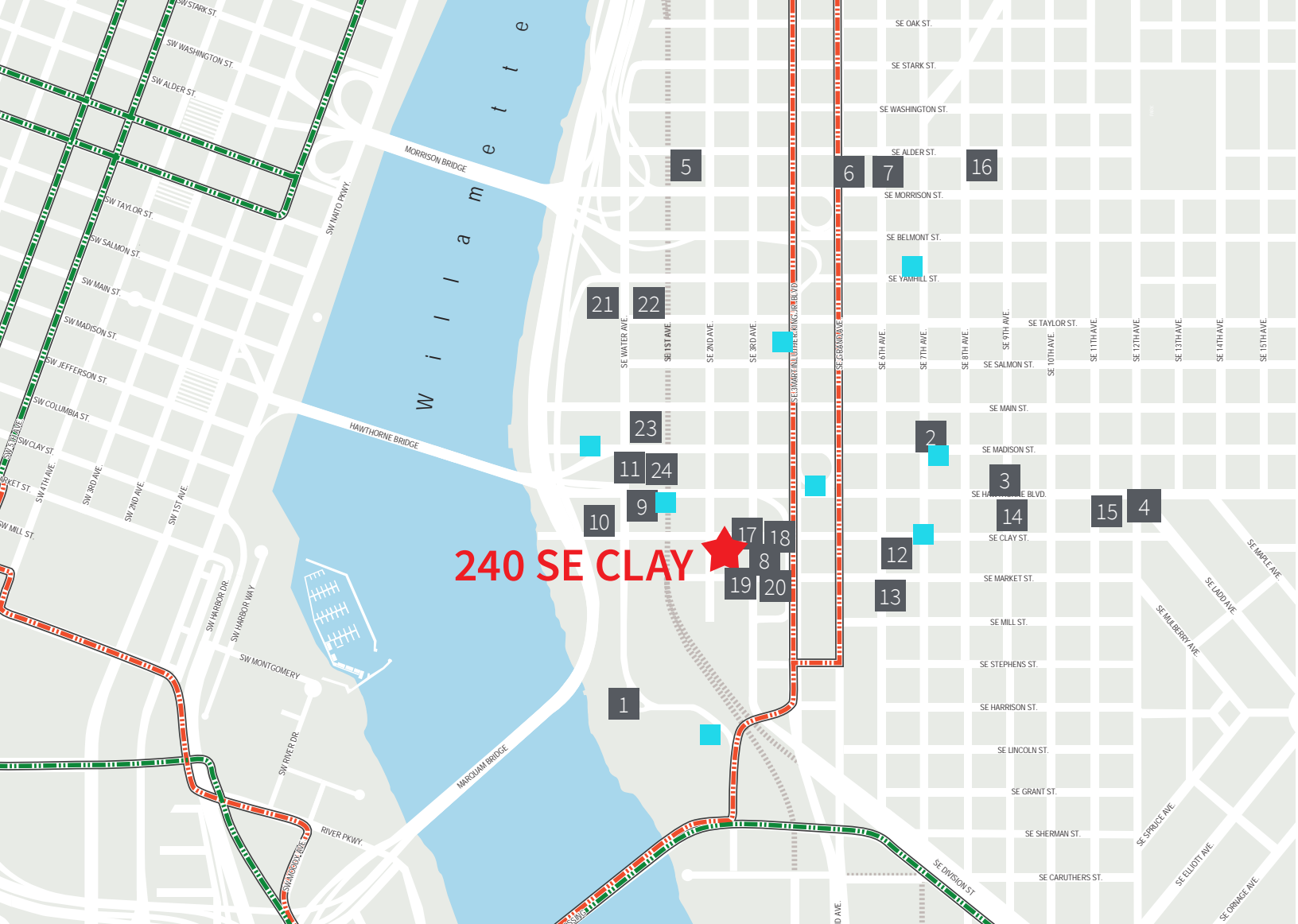
Highly desired Close-in SE area



3rd Floor: 15,576 SF
Available Now

5th Floor: 14,413 SF
Available January 2020

Total: 29,989 SF
Contiguous



240 SE CLAY

NEARBY AMENITIES

- | | | | |
|---------------------------|----------------------|--------------------------------|--------------------------|
| 1 OMSI | 7 Voicebox Karaoke | 13 New Cascadia | 19 Stacked Sandwich Shop |
| 2 White Owl Social Club | 8 Pixie Retreat | 14 The Analog Cafe and Theater | 20 Aybla Grill |
| 3 Lucky Labrador Brew Pub | 9 Taqueria La Merced | 15 Burgerville | 21 Clarklewis |
| 4 Lardo | 10 Coopers Coffee | 16 Rimsky-Korsakoff House | 22 Water Avenue Coffee |
| 5 Portland Night Market | 11 Noraneko | 17 Nossa Familia Coffee | 23 Sushi Mazi |
| 6 Dig A Pony | 12 Elephants Deli | 18 Pure Simple Juice | 24 Sugar Street Bakery |

 MAX Lightrail
 Portland Streetcar
 Bus stop

FOR LEASING INFORMATION:

- | | | | |
|--|--|--|--|
| Craig Reinhart
Licensed in OR
+1 503 937 8188
craig.reinhart@am.jll.com | Eric Turner
Licensed in OR
+1 503 46 3670
eric.turner@am.jll.com | Cayla Wardenburg
Licensed in OR
+1 503 546 3661
cayla.wardenburg@am.jll.com | Candace Lounsbury
Licensed in OR & WA
+1 503 937 2131
candace.lounsbury@am.jll.com |
|--|--|--|--|

