



*Achieve  
Ambitions*



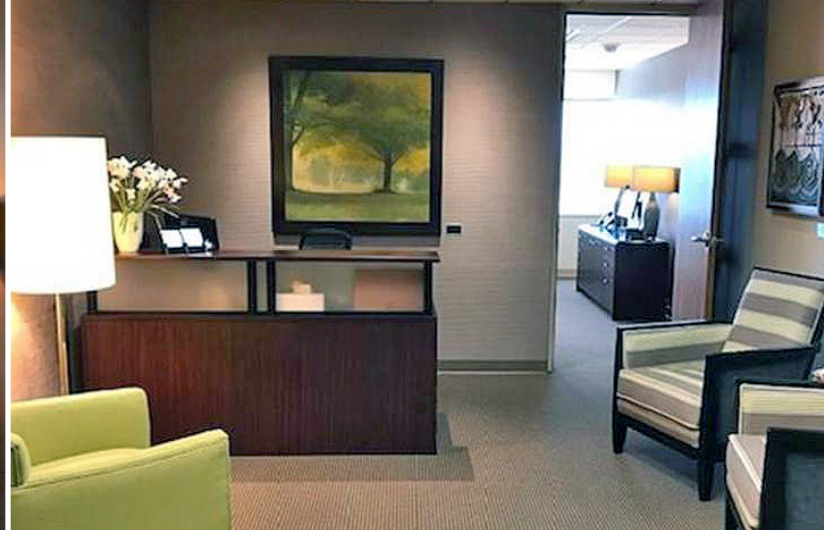
# *Available for* **SUBLEASE**

10850 W. Park Place, Suite 530  
Milwaukee, Wisconsin

- PRIVATE OFFICES
- CONFERENCE ROOM
- FURNITURE AVAILABLE SUBJECT TO APPROVAL

## **Lease Terms**

**Sublease size:** 3,573 SF  
**Term through:** October 31, 2021  
**Lease rate:** Negotiable



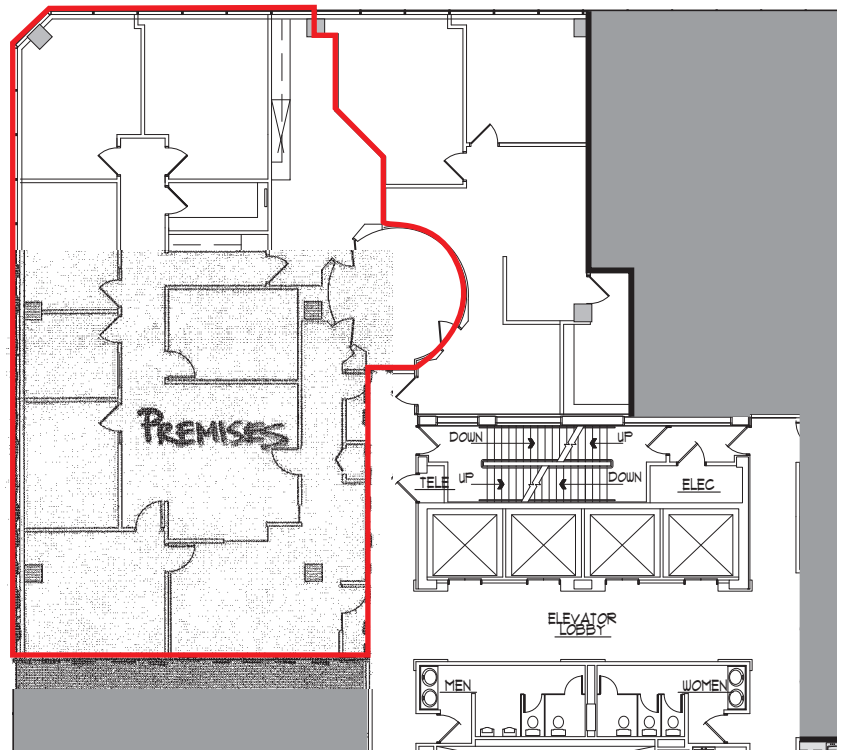
## Building Overview

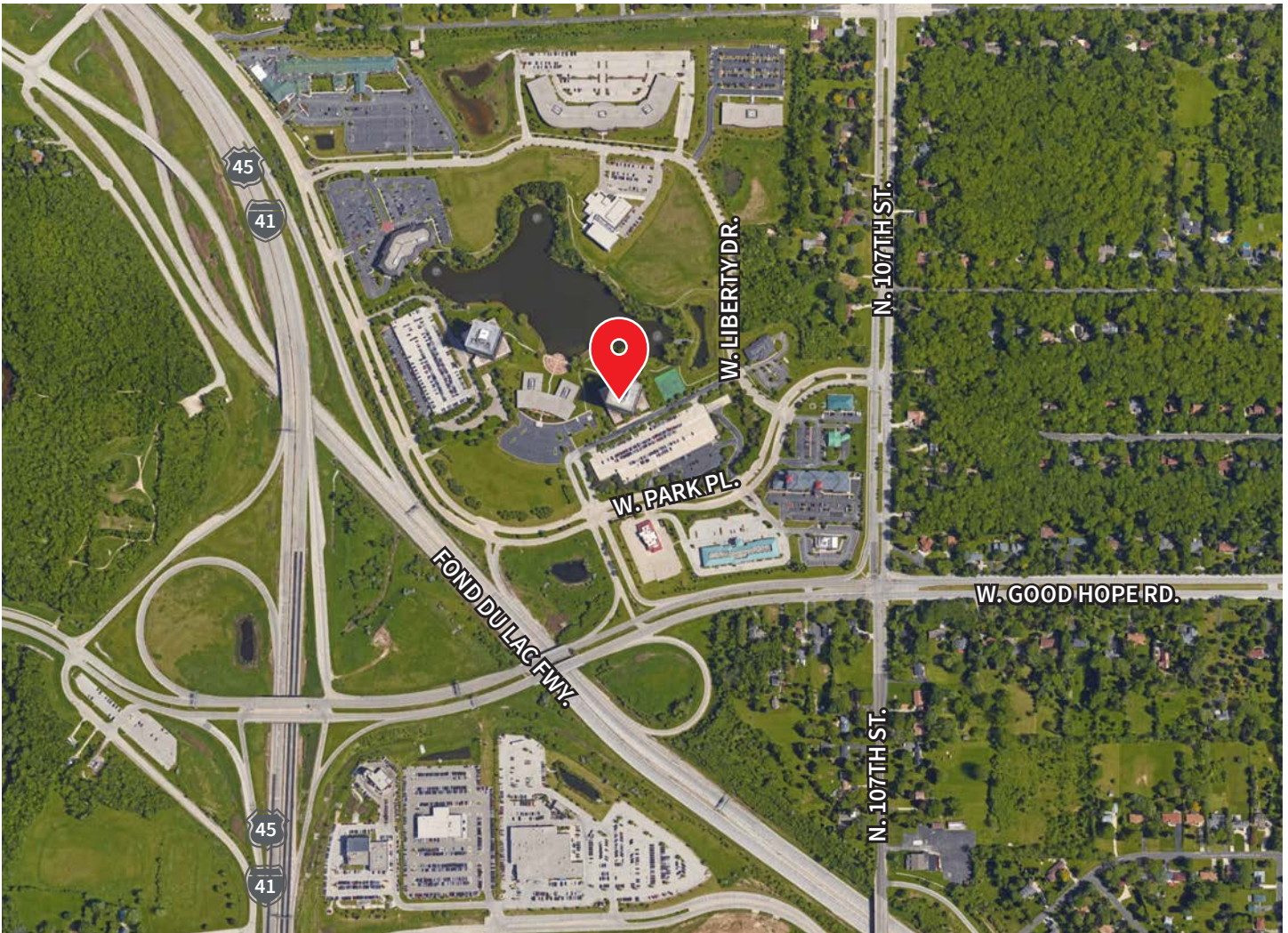
<b>Building Size:</b>	197,600 SF
<b>Stories:</b>	12
<b>Built / Renovated:</b>	1987
<b>Parking Ratio:</b>	3.7 / 1,000 SF
<b>Floor Plate:</b>	16,288 SF

## Building Features

- On-site security, management, & engineering
- Covered parking
- Immediate access to I-41/45
- Conference room on 1st floor (~60 person capacity)
- Building vending and lunch room
- Sports amenities including health club, locker room with showers, and walking/jogging trail surrounding the lake

## Sublease Suite 530 3,573 SF





Nick Hepner  
Associate Broker  
direct + 1 414 944 2107  
mobile +1 608 444 1675  
[nick.hepner@am.jll.com](mailto:nick.hepner@am.jll.com)

DISCLAIMER: Although information has been obtained from sources deemed reliable, Owner, Jones Lang LaSalle, and/or their representatives, brokers or agents make no guarantees as to the accuracy of the information contained herein, and offer the Property without express or implied warranties of any kind. The Property may be withdrawn without notice. If the recipient of this information has signed a confidentiality agreement regarding this matter, this information is subject to the terms of that agreement. ©2019. Jones Lang LaSalle. All rights reserved.

[jll.com](http://jll.com)

TWO PARK PLAZA | 10850 W. PARK PLACE SUITE 530