

For Sale

±352.13 acres available

Highway 27 and East Dave Dugas Road
Sulphur, Louisiana

Simmi Jaggi
Managing Director
+1 713 888 4098
simmi.jaggi@am.jll.com

Elizabeth Clampitt
Senior Vice President
+1 713 888 4075
elizabeth.clampitt@am.jll.com

Richard Juge, CCIM SIOR
Principal | Remax
+1 504 915 8877
rjuge@nolacommercial.com

Property overview

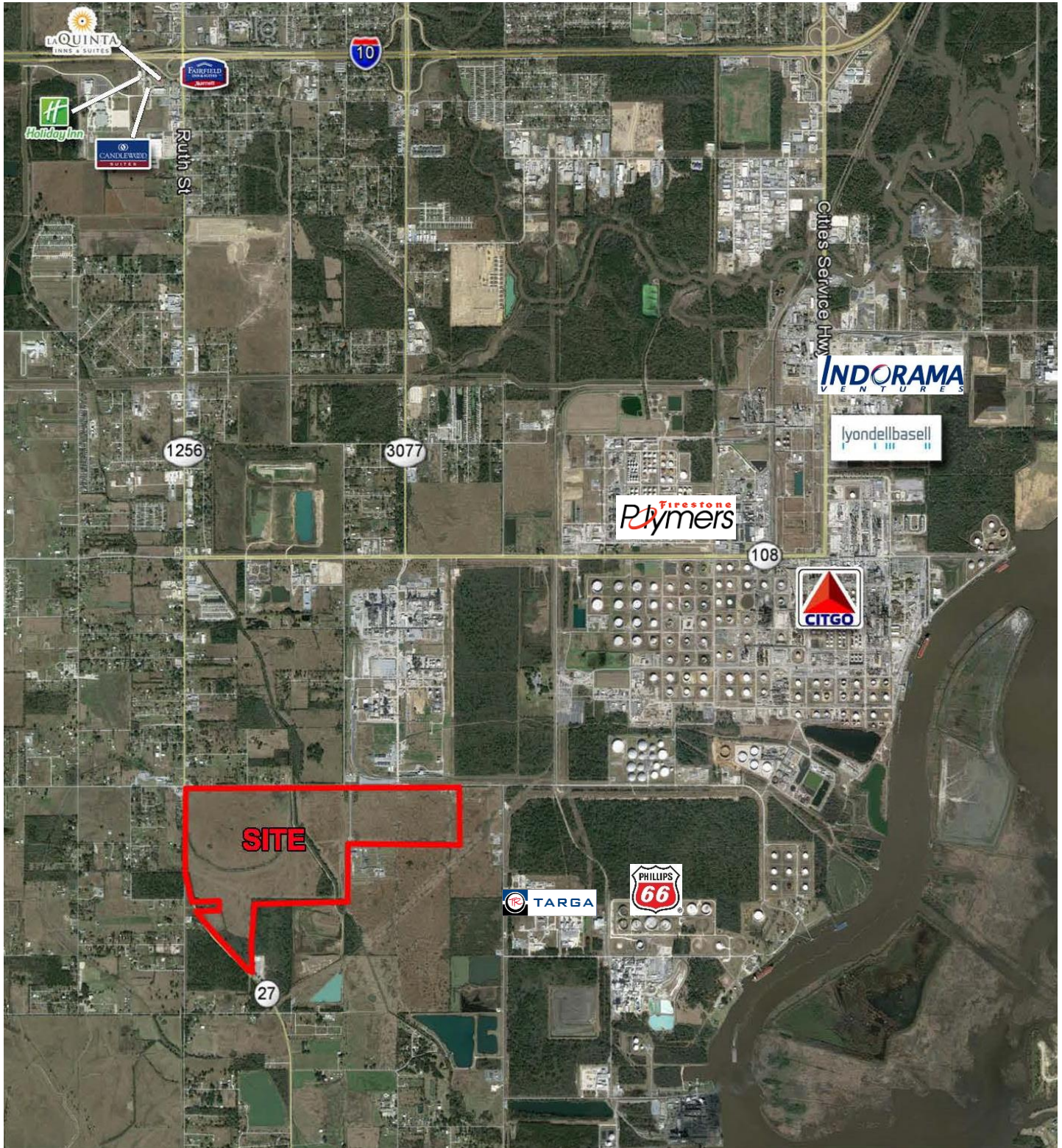
Available	±352.13 acres of land
Location	Located ±1.5 miles south of Interstate 10 and ±9 miles west of Lake Charles is a ±352.13-acre, port-based site located in Sulphur, Louisiana off of the shore of Prien Lake. This land's likely use in the future is redevelopment into single-family residential, commercial or industrial/distribution.
Industries	Construction, machining, manufacturing and chemical manufacturing
Largest Area Employers	Citgo Petroleum Corp, Guard Gate Lube Plant, Golden Nugget Casino, Calcasieu Parish School System, Turner Industries, Axiall Corporation
Price	Please contact for pricing information



For Sale

±352.13 acres available

Highway 27 and East Dave Dugas Road | Sulphur, Louisiana



DISCLAIMER

The information contained herein is obtained from sources believed to be reliable. However, Jones Lang LaSalle makes no guarantees, warranties or representations as to the completeness or accuracy thereof. The presentation of this property is submitted subject to errors, omissions, change of price or conditions, and is subject to prior sale, lease or withdrawal without notice.

