

# STADIUM CENTRE



## For Lease

### The premier mixed-use student housing development

- Comprised of 6 student housing towers known as the Axis, Block, Court, Deck, Edge and Flex that collectively house nearly 1,700 beds and 30,522 square feet of retail space
- Convenient access to the FSU campus that is directly across the street which has approximately 42,000 students
- Located in the Gaines Street corridor that has been significantly redeveloped over the past several years changing this submarket into the focal point for student housing, shopping and dining
- There are nearly 10,000 apartment beds within a short walking distance with over a thousand more beds under construction
- Superior visibility and exposure to Gaines Street which serves as a primary east-west arterial providing access from the FSU campus to the downtown CBD that is home to Florida's state capital
- New Greenwise Publix is now open adjacent to the Deck building
- New boutique 140 key Indigo hotel under construction directly across from the Block
- The strategic location on Gaines Street is the center-point connecting the 3 college campuses in the market opening up convenient access to 70,084 students (Florida State, Florida A&M, Tallahassee Community College)

**Stadium Centre**  
**699 & 799 West Gaines St**  
**Tallahassee FL 32304**

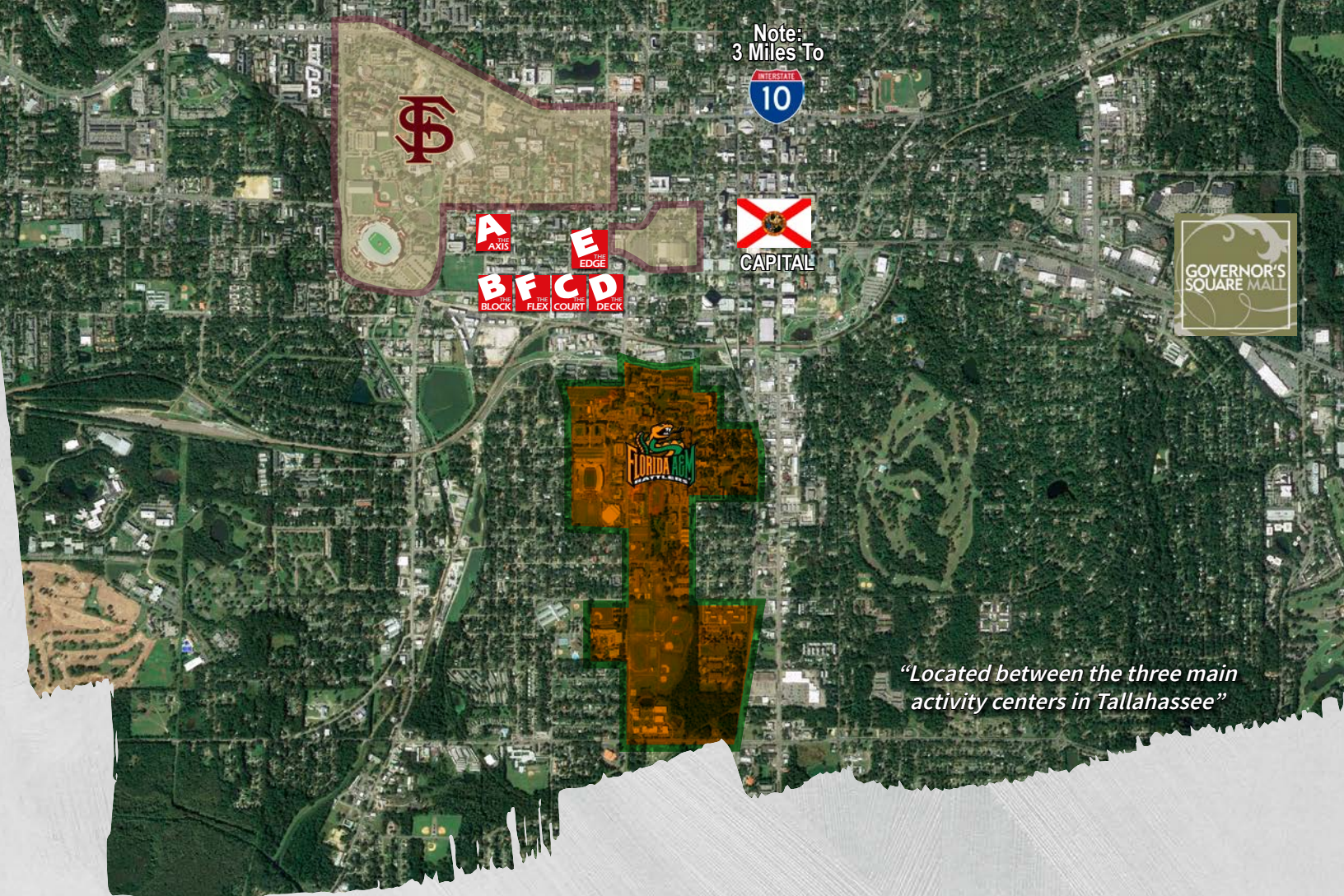
**Brandon Delanois**  
+1 407 982 8648  
[brandon.delanois@am.jll.com](mailto:brandon.delanois@am.jll.com)

Join retailers like:



[us.jll.com/retail](http://us.jll.com/retail)





### Florida State University

- 2018 Enrollment : 41, 717
- Faculty & Staff:
  - » 2,408 faculty members
  - » 5,900 staff
- Doak Campbell Stadium:
  - » 79,560 seats
  - » Largest football stadium in the ACC
  - » Largest continuous brick structure in the United States



### Florida Agricultural and Mechanical University

- 2018 Enrollment : 9,909
- Faculty & Staff: 1,722 employees
- Founded on October 3, 1887
- 156 buildings spread over 422 acres

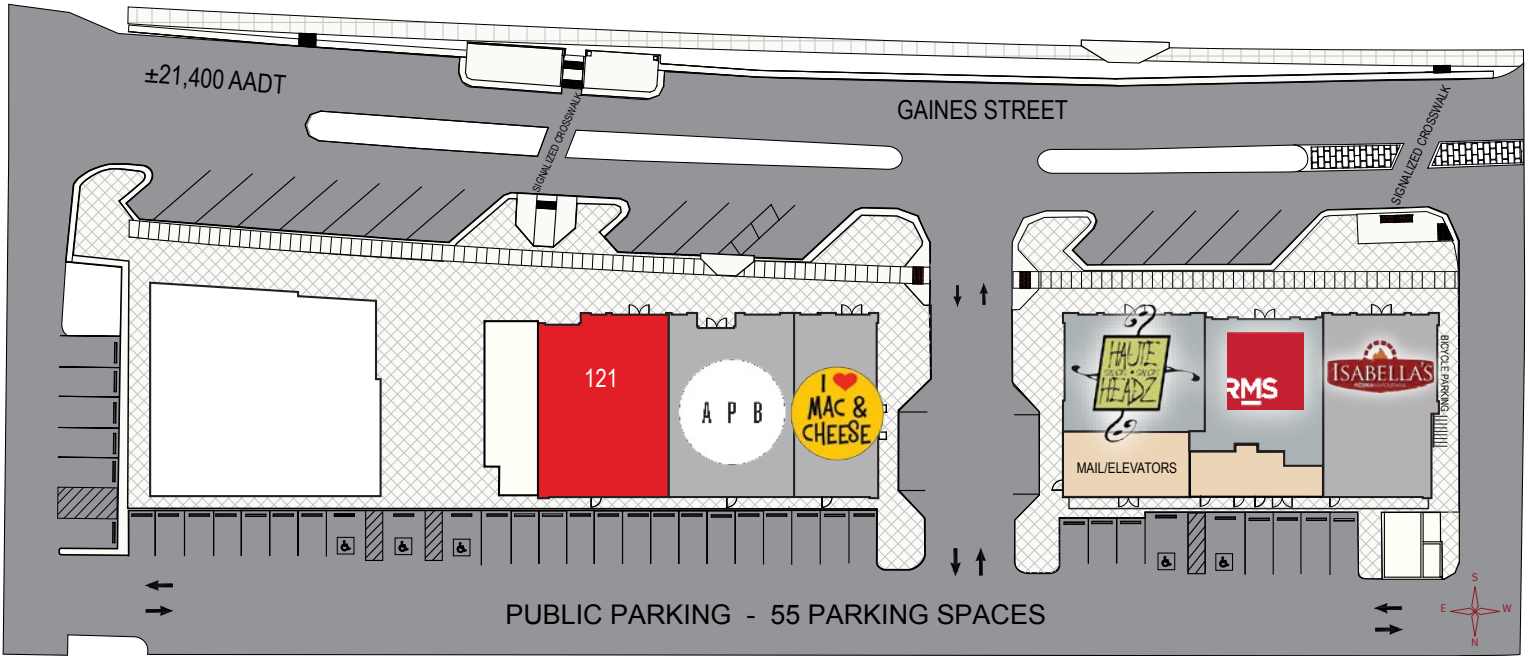


### Tallahassee Community College

- 2018 Enrollment : 18,458
- Faculty & Staff: 1,468 employees
- Founded in 1966
- 24 buildings spread over 270 acres

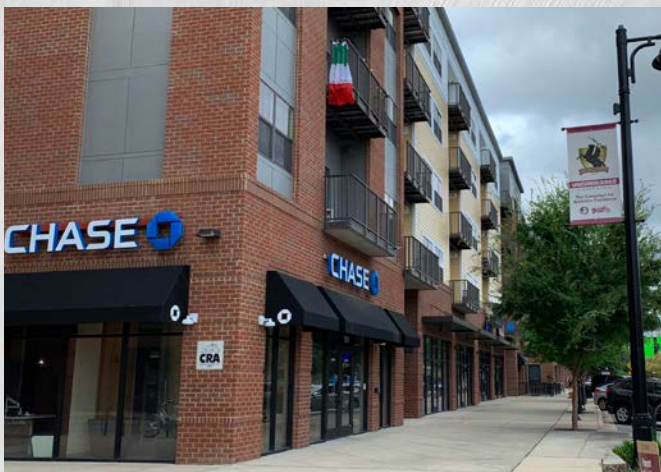
### *Important Area Facts:*

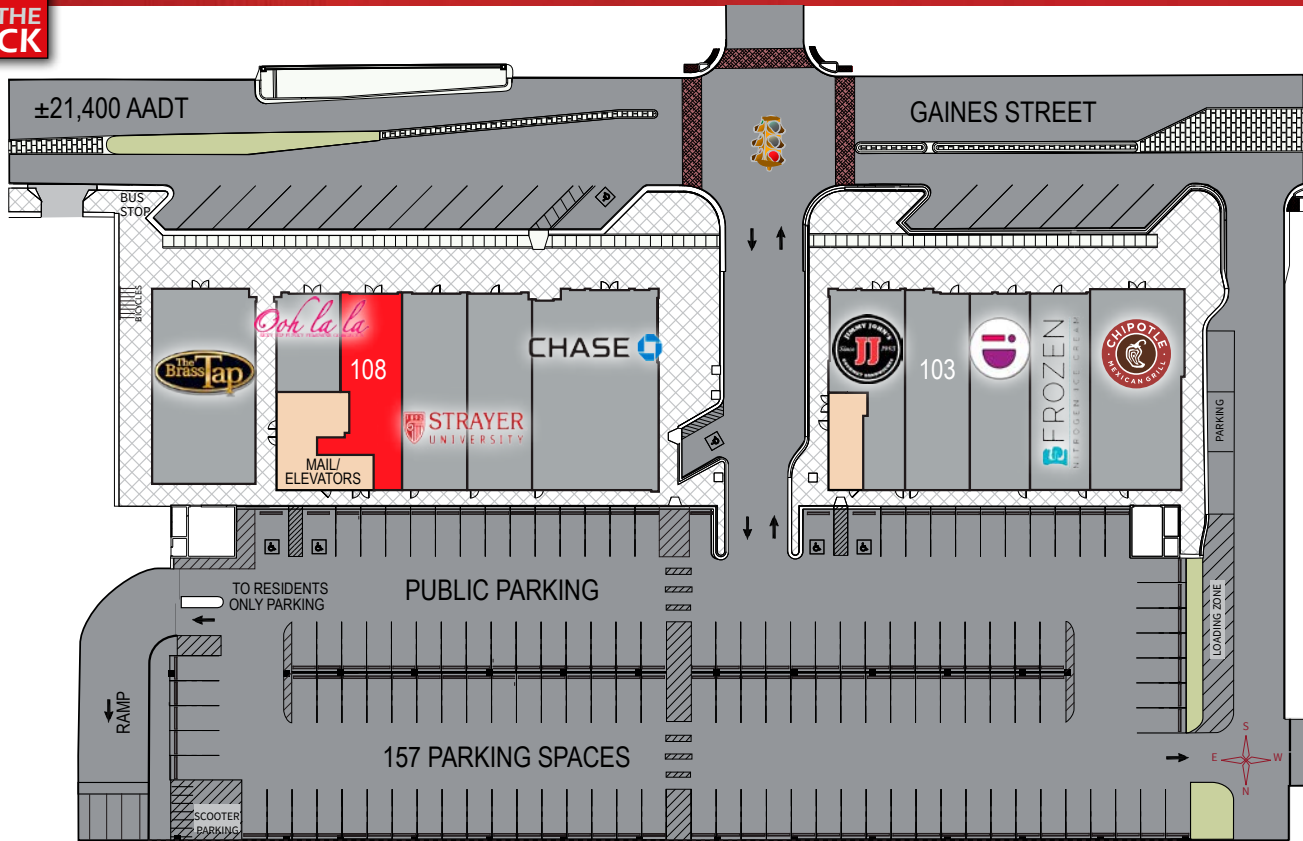
- The number of people in the Capitol during a normal workday is 1,500. During the Legislative session, this number increases to over 5,000
- There are 10,000 beds within walking distance
- Approximately 33,000 employees within a 1-mile radius of the project
- Nearly 96,000 employees within a 3-mile radius



- LEASED
- AVAILABLE
- LOI OR LEASE PENDING

SUITE #	TENANT	SF
100	Isabella's Pizzeria	1,723
101	Risk Management Solutions	1,809
102	Haute Headz	1,350
113	I ♥ mac & cheese	1,570
117	APB	1,802
121	AVAILABLE - RESTAURANT	2,081
<b>TOTAL GLA</b>		<b>10,335</b>





- LEASED
- AVAILABLE
- LOI OR LEASE PENDING

SUITE #	TENANT	SF
100	Chipotle	2,448
101	Frozen Nitrogen Ice Cream	1,534
102	iDope	1,536
103	LEASE PENDING	1,675
104	Jimmy Johns	1,531
105	Chase Bank	3,253
106	Strayer University	1,661
107	Strayer University	1,668
108	AVAILABLE	1,415
109	Ooh La La Boutique	846
110	The Brass Tap	2,620
<b>TOTAL GLA</b>		<b>20,187</b>



