

BANK *of* AMERICA  
— P L A Z A —

800 MARKET STREET | ST. LOUIS, MO 63101

*A premier Class A office building in Downtown St. Louis  
with rich amenities and spectacular views*



# BUILDING HIGHLIGHTS

Bank of America Plaza provides a premium tenant experience with spectacular views of the city. The building's common areas bring people together with convenient and comfortable lobbies and lounges. The tech-equipped conference center provides meeting space for up to 250 people. While boasting amazing views of Citygarden, the fully-staffed fitness center focuses on employee well-being with top-of-the-line equipment, personal training and group classes.

- » 30-story designated BOMA 360 Performance Building
- » Beautiful multi-million dollar renovations of atrium, café, common areas and amenities
- » On-site amenities
  - + Fitness center
  - + Conference center
  - + Retail banking
  - + 24-hour security
  - + Sundry shop
  - + Café (serves breakfast and lunch)
- » Attached and covered 2,100-car parking garage with reserved spots available
- » On-site property management
- » On-site building engineering staff
- » Unobstructed views of Citygarden, Busch Stadium, Kiener Plaza and the Gateway Arch
- » Excellent highway access
- » Lease rates from \$20.00 - \$22.00 per SF



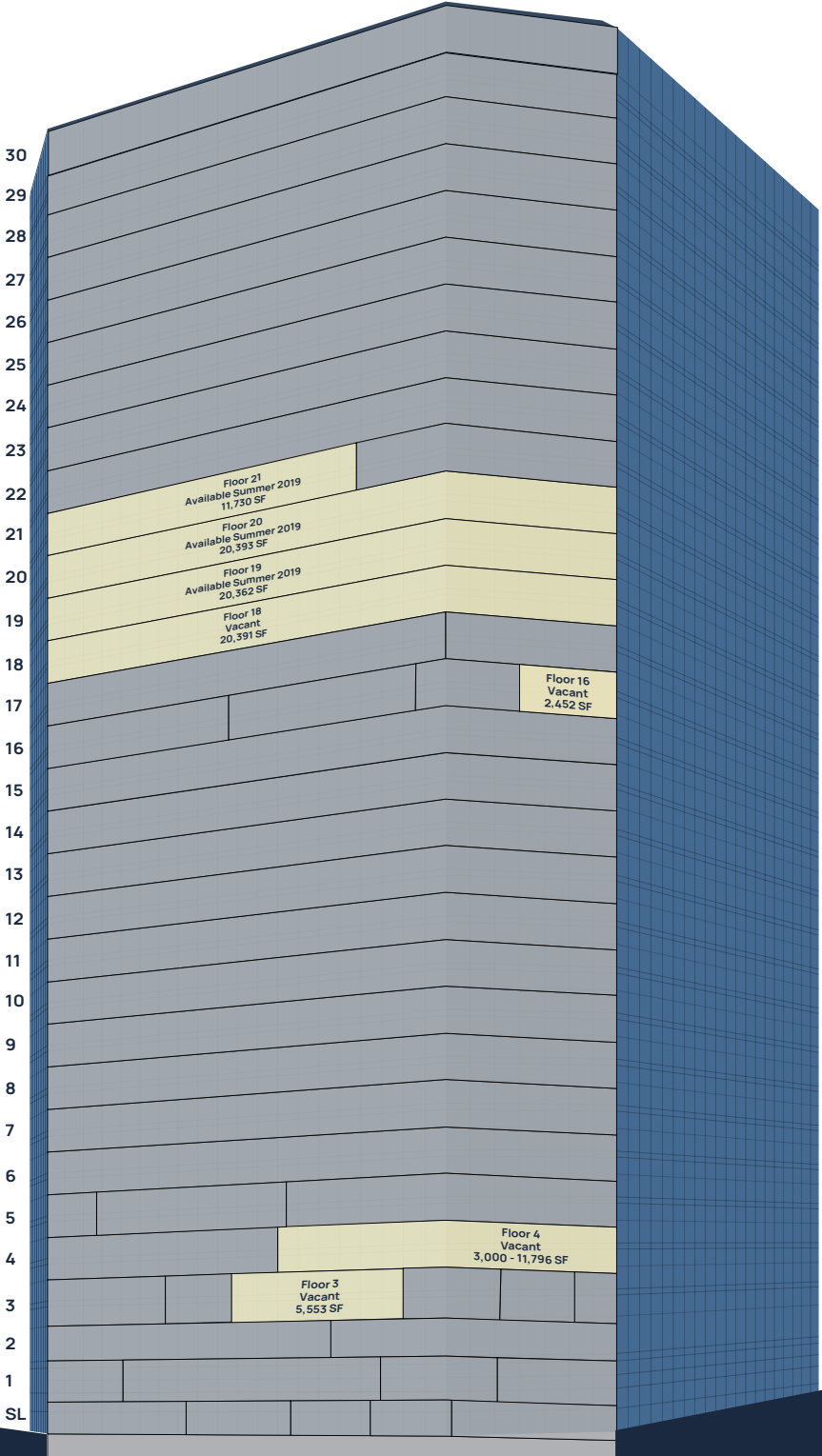
## MORE THAN 32,000 SF OF COMMON AREAS AND TENANT AMENITIES

*fitness center* | *conference center* | *on-site café* | *sundry shop* | *large tenant lounge*



# FLOOR PLATES

At over 20,000 SF, the floor plates at Bank of America Plaza are perfect for today's modern collaborative work place. Customize an office that's just right for your business with traditional or creative build outs. Large windows and high ceilings flood the space with natural light providing a productive work environment.



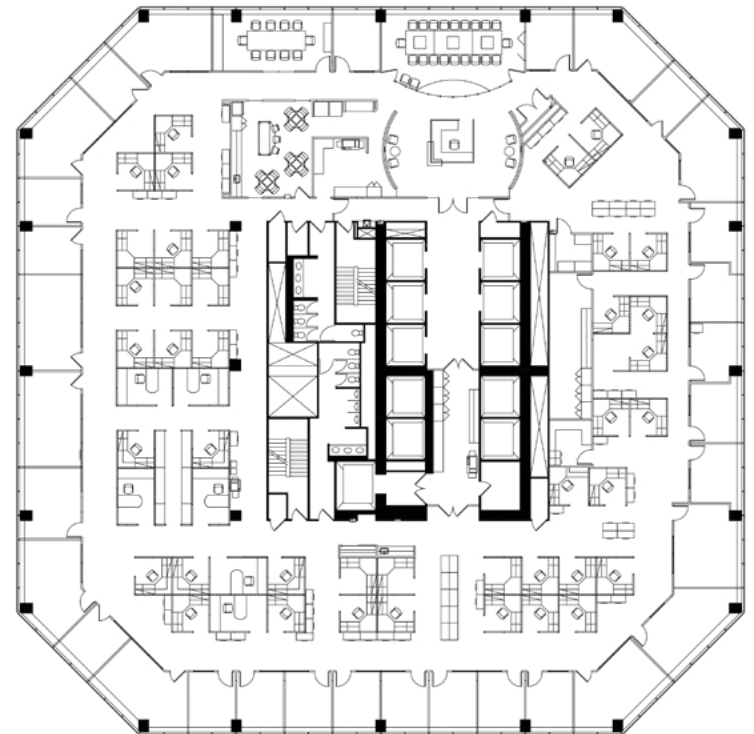


## AVAILABILITIES

3rd Floor	5,553 SF	Now
4th Floor	3,000 - 11,796 SF	Now
16th Floor	2,452 SF	Now
18th Floor	20,391 SF*	Now
19th Floor	20,362 SF*	Summer 2019
20th Floor	20,393 SF*	Summer 2019
21st Floor	11,730 SF*	Summer 2019

*\*contiguous up to 72,876 sf*

*sample build out*





the dome at america's center

america's center convention complex

union station

enterprise center

busch stadium



**BANK of AMERICA**  
— PLAZA —

# DOWNTOWN ST. LOUIS

# NEARBY AMENITIES



## restaurants



1. Ruth's Chris Steak House
2. Tony's / Anthony's
3. Imo's Pizza
4. TGI Fridays
5. Hooters
6. St. Louis Bread Company
7. The Eatery
8. Charlie Gitto's
9. Starbucks
10. Pi Pizzeria
11. Sauce on the Side
12. Yiro Gyro
13. Culinaria Grocery
14. Bailey's Range
15. Gioia's Deli
16. Kaldi's Coffee
17. 6 North Cafe
18. Various Food Trucks
19. Quattro Trattoria + Pizzeria
20. The Midwestern
21. Wheelhouse
22. Maurizio's Pizza
23. Subway
24. Chris' @ The Docket

## hotels



1. Four Seasons Hotel
2. Hampton Inn
3. Drury Plaza Hotel
4. Embassy Suites
5. Courtyard by Marriott
6. Marriott St. Louis Grand
7. Magnolia Hotel St. Louis
8. Hotel Saint Louis
9. Hilton at the Arch
10. City Place Hotel
11. Hyatt Regency
12. Drury Plaza Hotel at the Arch
13. Hilton at the Ballpark
14. Westin Hotel
15. Red Lion Hotel
16. St. Louis Union Station Hotel
17. Drury Inn St. Louis at Union Station

## entertainment/attractions



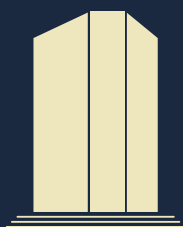
1. Laclede's Landing
2. Lumiere Casino
3. MX Movie Theater
4. Ballpark Village
5. Old Courthouse
6. Kiener Plaza
7. Citygarden
8. Soldiers' Memorial
9. City Museum
10. Stifel Theatre
11. St. Louis Aquarium & Wheel at Union Station

## key buildings



1. The Old Cathedral
2. Federal Reserve Bank
3. US Bank
4. City Hall
5. Central Library





BANK *of* AMERICA

— P L A Z A —

CONTACT

**David Steinbach** | Managing Director

+1 314 261 7369

david.steinbach@am.jll.com

[jll.com/st-louis](http://jll.com/st-louis)

+1 314 338 2080

**DISCLAIMER**

© 2019 Jones Lang LaSalle IP, Inc. All rights reserved. All information contained herein is from sources deemed reliable; however, no representation or warranty is made to the accuracy thereof.

