

## I am going to a show at Lincoln Center!

I will be attending a show with my family. The event is presented by Restart Stages at Lincoln Center for the Performing Arts.

Lincoln Center is the largest performing arts center in the world. They are now opening outdoor stages for our families!

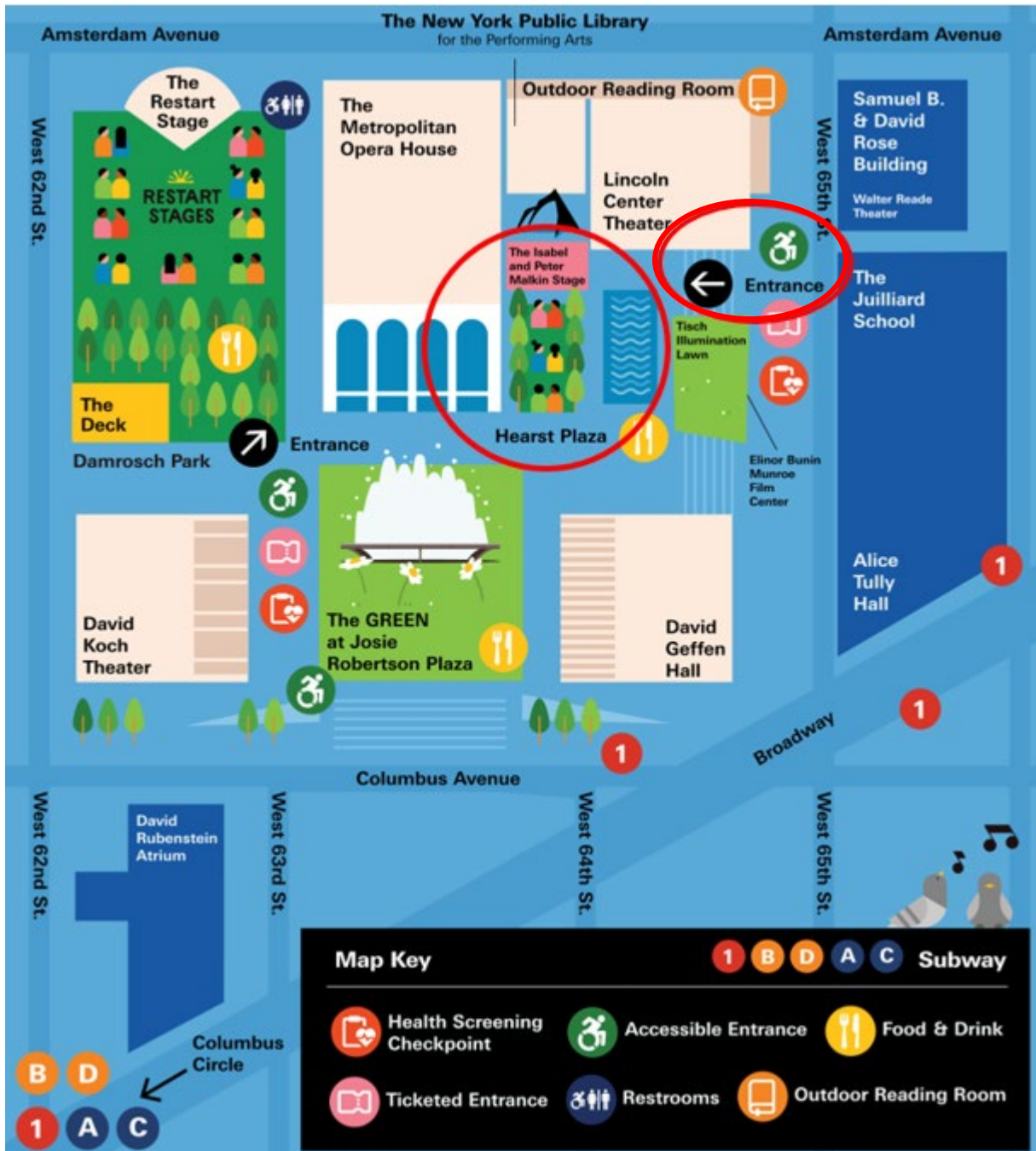
People visit Lincoln Center from many different places to see concerts, plays, and dance performances.



Photos by Sachyn Mital

[Click here](#) to learn more about Restart Stages at Lincoln Center.

## Preparing for the Show:



The performance is in Hearst Plaza which is located between the Metropolitan Opera House and the Laurie M. Tisch Illumination Lawn. The stage is in front of The New York Public Library for the Performing Arts.

## When I arrive:

I can take the train or bus, drive, or walk to Lincoln Center.

My e-ticket includes an arrival time. If I am early, I may want to visit The GREEN.

The GREEN is an installation of grass-like material surrounding the Josie Robertson Plaza.

I can sit in this space and relax. I can get food or drinks from the snack bar.



[Click here](#) to learn more about The GREEN.



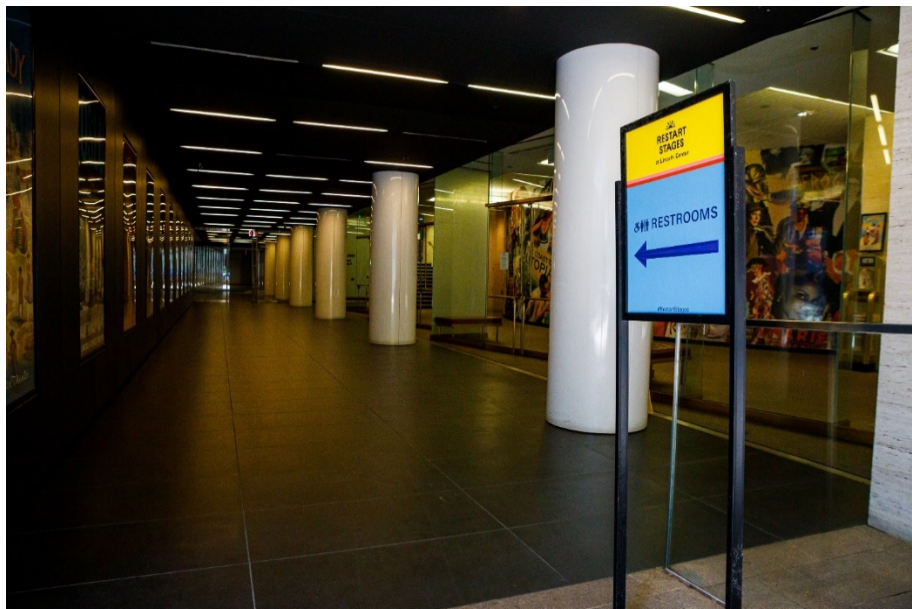
## Restrooms:

If I arrive early I can use the restrooms before getting in line with my tickets.

The restrooms are in the Concourse level of Lincoln Center. I can enter on West 65<sup>th</sup> Street through the glass doors under a large awning for Lincoln Center Theater.



I will walk down a long hallway and follow the restroom signs.



## Ticketing Entrance:

The ticketing entrance is located on West 65th Street (between Amsterdam Avenue and Broadway) between the Elinor Bunin Munroe Film Center and the Lincoln Center Theater.

When I arrive I may need to wait in line. Lincoln Center staff will let me know when I can go up to the plaza level.

I can take the stairs or the large glass elevator which will bring me up to the plaza level.





## Ticket Check & Security:

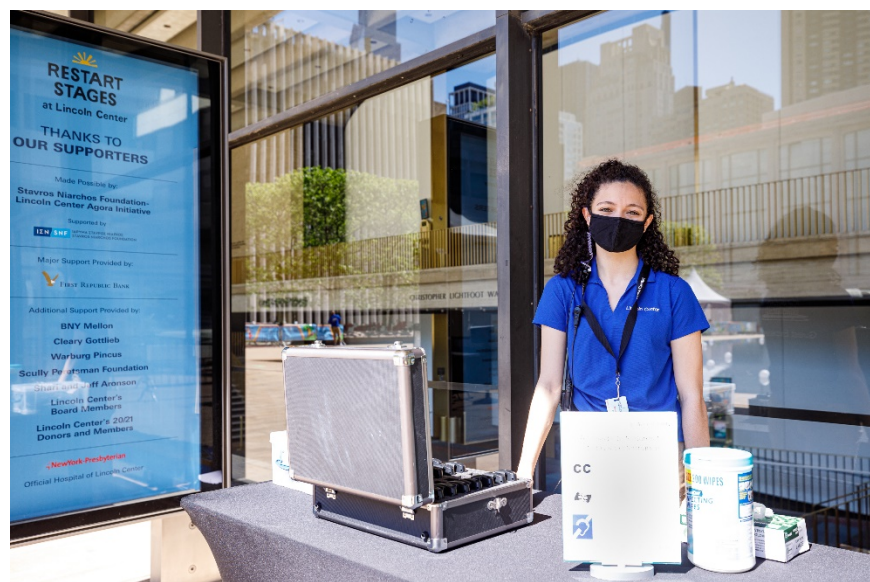
On the plaza level I will be greeted by Lincoln Center staff who will take my temperature and scan my ticket. I will need to wear my mask past this point.



Then I will walk through the security checkpoint.



If I need any accommodations like an Assistive Listening Device or earplugs, I can ask at the Accessibility Table, which is just past the security checkpoint.

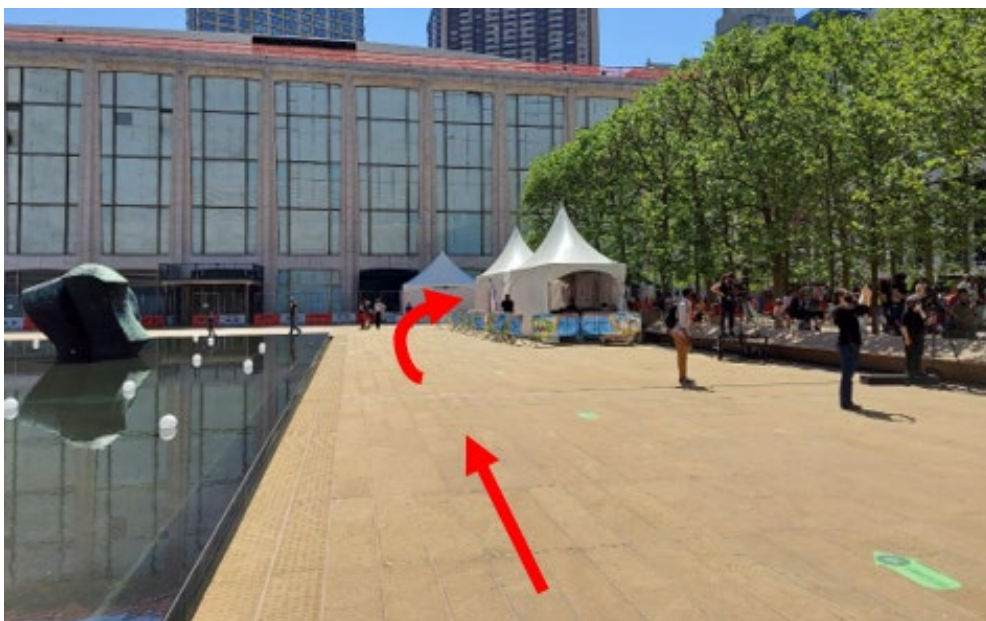




## Getting to my seat:

When I am past the security checkpoint I will walk around the Paul Milstein Reflecting Pool past the white tents.

If I have questions or need an accessible entrance, I can ask Lincoln Center staff.





## Event Schedule:

1. I can take the train or bus, drive, or walk to Lincoln Center.

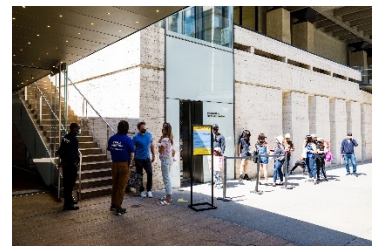


The show will start at 11:00 am and I will plan to arrive early. My e-ticket has my timed entry of 10:15, 10:30, or 10:45.

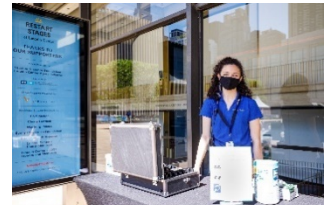


If I am early, I may want to use the restroom, get a snack, or visit The GREEN.

2. When I get to 65<sup>th</sup> Street, between Amsterdam and Columbus Avenues, I'll show my e-ticket and take either the stairs or elevator to the Plaza level. I may need to wait in line here.



3. I may go through a health screening and/or bag check. If I need earplugs, I can ask for them at the Accessibility Table. Then I will go to my assigned pod.



4. I will enjoy the performance from my pod. Each performance lasts about an hour.



5. **Last**, when the performance is over, I will **applaud** and say goodbye!

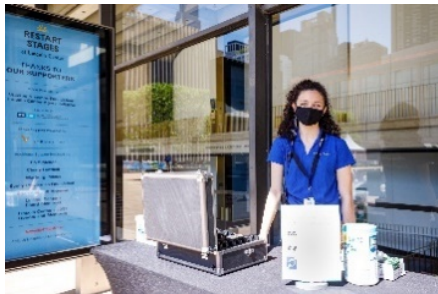


## During the program I will meet...



### Security Guards

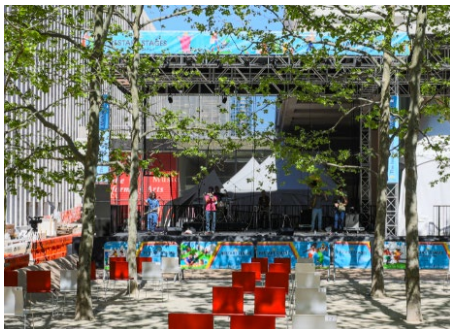
They keep our campus safe.  
They may need to check our bags when we arrive.



### Lincoln Center Staff

They will check my ticket at the entrance and help me find my seat.

I can ask for directions and where to find the restroom.



### Performers

From my seat I will see the performers on stage. The show is called: **Poets on the Plaza**, featuring artists from a group called **The Moth**.

Moth storytellers will share moments from their lives that celebrate diversity and the commonality of human experience.

[Click here](#) to learn more about the performance.



## Key Words:

### Pod

A pod is a socially distanced, designated seating area for small groups of people.

Each pod includes three armless chairs. They are a minimum of 6 ft distance from other pods. All seats are located on accessible routes and can be removed to make space for mobility devices.

### Performance

A performance is a presentation of art like a play or concert, often presented on a platform called a **stage**.

The people putting on the performance are called **performers** or **artists**.

### Audience

An audience is a group of people who gather to watch or listen to a performance, like a concert.

### Venue

A venue is the area where you watch a performance. Here is a picture of the stage at our venue, Hearst Plaza:



## What should I notice during the program:

### 1. What do I notice about the performers?

- Are they playing any instruments?
- How do they move while they are performing?
- What do they sound like?

### 2. What do I notice about myself?

- How am I moving to the music?
- What is my favorite instrument?
- What sounds were my favorite?

### 3. What do I notice about the space?

- What am I seeing in the outdoor space?
- What are other people's reactions to the performance?
- What movements are they making?



## Extension Questions:

### When I think about this performance...

- What was my favorite part of this performance?
- What did I learn during the performance?
- What surprised me during the performance?