

Big Umbrella Festival – Damrosch Park



From April 4–20, 2025, *Big Umbrella Festival* welcomes kids, teens, and adults for a dynamic series of programming over three weekends, designed with and for neurodiverse audiences. Audiences can design their own festival weekend by booking tickets online to individual events.

Guests can also experience free, interactive art installations with **Los Trompos** and workshop activities with the **Creative Activity Station** in Damrosch Park.

This free interactive installation will be open to the public on April 4–6, 9–13, and 16–20 of 2025 from 11:00 am–6:00 pm.

This installation takes place in **Damrosch Park**, located along West 62nd Street between Columbus and Amsterdam Avenues.

Performance Venue: Damrosch Park



Damrosch Park (circled in red) is located on the Northwest side of 62nd Street between Amsterdam and Columbus Avenues.

Getting to Damrosch Park

Travel Options:

Lincoln Center is on the Upper West Side of Manhattan, between West 62nd and 66th Streets and Columbus and Amsterdam Avenues. Damrosch Park is located on the North side of West 62nd street between Columbus and Amsterdam Avenues.

BY SUBWAY: Damrosch Park is a short distance from the **1** train at West 66th Street and a slightly longer distance from the **A, B, C, D** or **1** trains at 59th Street—Columbus Circle, accessible via elevator.



BY BUS: The **M5, M7, M10, M11, M66,** and **M104** bus lines all stop within one block of Lincoln Center.

Access-A-Ride: The closest exact address for the entrance to Damrosch Park is 139 West 62nd Street. For guests who are unable to stand in line due to a disability and need to visit the Welcome Center for an accommodation, use **20 Lincoln Center Plaza** (our designated Access-A-Ride drop-off, between 63rd and 64th Streets, near David Geffen Hall).

Pick-Up/Drop-Off: West 62nd Street between Amsterdam and Columbus Avenues.

Parking:

Main Campus Parking (operated by ICON) is available.

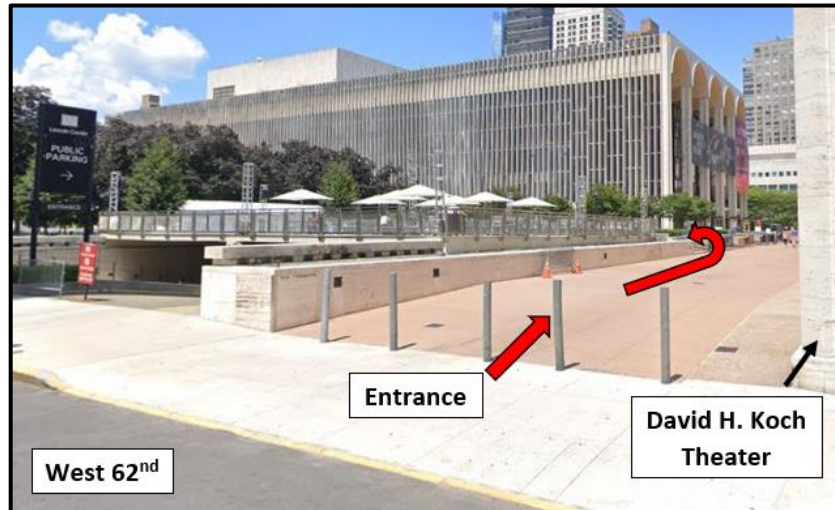
- Designated accessible parking spaces are located in the yellow section of the garage.
- Entrance for the Reserved Parking Section is on Amsterdam Avenue at 64th Street.
- Parking permit and/or sticker must be displayed.
- Advance reservations for parking include a \$5 service charge.
- Height restrictions for vans apply.

To reserve parking, call CenterCharge at 212-721-6500 or visit online at Tickets. [LincolnCenterParking.org](https://www.lincolncenterparking.org)



Accessible Entry:

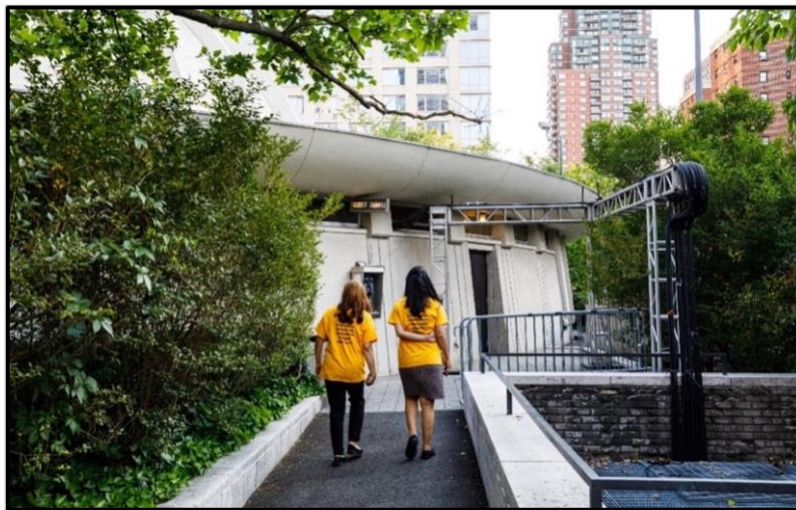
Guests can use the accessible entrance on the north side of West 62nd Street between Columbus and Amsterdam.



There will be astroturf on the ground with two entrances. One entrance is inclusively designed for people with mobility devices.

Restrooms:

For guests within the venue, the closest gendered restrooms with accessible stalls are available in Damrosch Park behind the bandshell.



Photos by Sachyn Mital

There are also all gender restrooms with accessible stalls on the lobby level of David Geffen Hall.



Additional gendered restrooms with accessible stalls are available on the Concourse Level of Lincoln Center under Josie Robertson Plaza, via the glass elevator on 65th Street or the elevator outside of the David H. Koch Theater.

Food, Drinks, and Water:

On April 5th and 6th, the No Limits Café food truck will be available in Damrosch Park from 11:00 am – 4:00 pm, serving sandwiches, soft pretzels, and other snacks. Cafe Joyeux will be serving coffee and tea. **A free water refill station** is available in David Geffen Hall.

Los Trompos at Damrosch Park



Bring your family to experience Los Trompos, a captivating, interactive installation featuring eight larger-than-life, three-dimensional spinning tops in a variety of colors and shapes at Damrosch Park. Each sculpture acts as a piece of art and a gathering place for relaxation, social interaction, and entertainment.

Created by Mexican creators Esrawe + Cadena and **powered by Creos**, the installation draws its inspiration from the spinning top toy that has been popular with children around the world since the dawn of time. This large-scale, hands-on artistic installation engages visitors in a way that is both meaningful and playful.



The ground will have astroturf. There will be two playgrounds for Los Trompos. One of the playgrounds has been inclusively designed for guests with mobility devices. Guests can sit, move on and with the spinning tops on the playground.

Creative Activity Station at Damrosch Park



While you're enjoying the *Big Umbrella Festival*, be sure to stop by the Creative Activity Station on April 4-6, 9-13, and 16-20 from 11:00 am – 6:00 pm outside on the North side of Damrosch Park, closet to the Metropolitan Opera. Activities at the station will be led by Lincoln Center's education team and teaching artists.

Accommodations:

The path to the venue and through the installation is on an **accessible route**. There are benches in Damrosch Park. Wheelchairs are available to borrow during the performance and on campus.



Service animals must be carried or wear foot coverings to protect the structure.

Guests are also welcome to visit the **KultureCity Sensory Activation Vehicle** near the East side of Damrosch Park.



Guests are welcome to take a break throughout the day. **Noise-reducing headphones, earplugs, fidgets, and other sensory items** are available to borrow from the Guest Experience Tent.



Access Concierge Service: Access Reps, trained to support guests with disabilities, are available to provide 1:1 support for individual guests and their party. Access Concierge Services **must be scheduled in advance**. For further information, guests can email questexperience@lincolncenter.org or call [212 875 5456](tel:2128755456).



Guests can request additional accommodations in advance by contacting access@lincolncenter.org or 212 875 5375.

What to expect at a Relaxed Activation:

- Guests are able to enter and leave the activity space throughout the event, as needed
- Guests can vocalize or move throughout activation space
- Fellow activity participants are asked to create a no “shushing” zone
- Attention to bright lights, loud noises, and surprise sensory elements, described in advance
- Chill Out Space for guests to take a break and rejoin activations when ready
- Visual guide, with clear instructions, shared before event
- Noise-reducing headphones and fidgets available to borrow
- Staff members and artists are trained in access and inclusion best practices

Sensory Break Space



A **KultureCity Pop-Up**, designed for guests to take a sensory break, is located on the East side of Damrosch Park, near the entrance and closet to West 62nd Street.

KultureCity provides sensory-inclusion through a trained team, sensory bags, and a mobile sensory room, available for families and individuals who have sensory needs/non-visible disabilities. Guests can find the sensory bags, with noise canceling headphones, fidget tools, and verbal cue cards, and mobile sensory room in Damrosch Park, with entrance on the north side of West 62nd Street, between Columbus and Amsterdam, available Wednesday through Sunday from 11am to 6pm.

While You Wait

Guests who arrive early can explore the public areas on campus while they wait.

Josie Robertson Plaza features a large fountain and spectacular views of Lincoln Center.



David Geffen Hall's lobby is an indoor space with a coffee bar, restrooms, and seating.



Hearst Plaza is a wonderful area with green space and seating to enjoy the cityscape.



For more events during Big Umbrella Festival, visit LincolnCenter.org/BigUmbrellaFestival